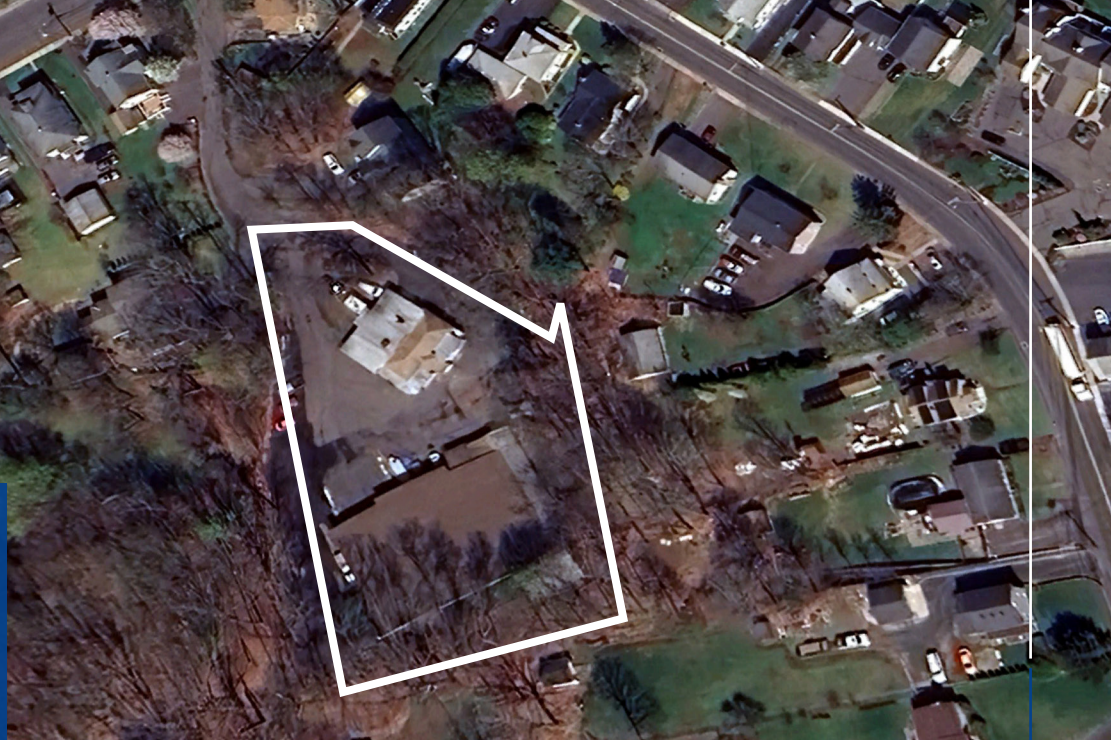


Lease Rate  
**\$13.00** psf gross



## 12 Highwood Avenue Southington, CT 06489

**±14,710 sf industrial building  
 on ±1.18 acres for lease**

12 Highwood Avenue a ±14,710 sf single-story industrial property on ±1.18 acres. There are spaces available ranging from 782 square feet to 7,782 square feet. Boat and vehicle space available at \$100/space.

SUITE	RSF	RATE	AVAILABLE
5	Up to 6,000	Negotiable	30-Days
7	782	\$13.00	30-Days
9	1,000	\$13.00	Immediately

**Christian Dietz**

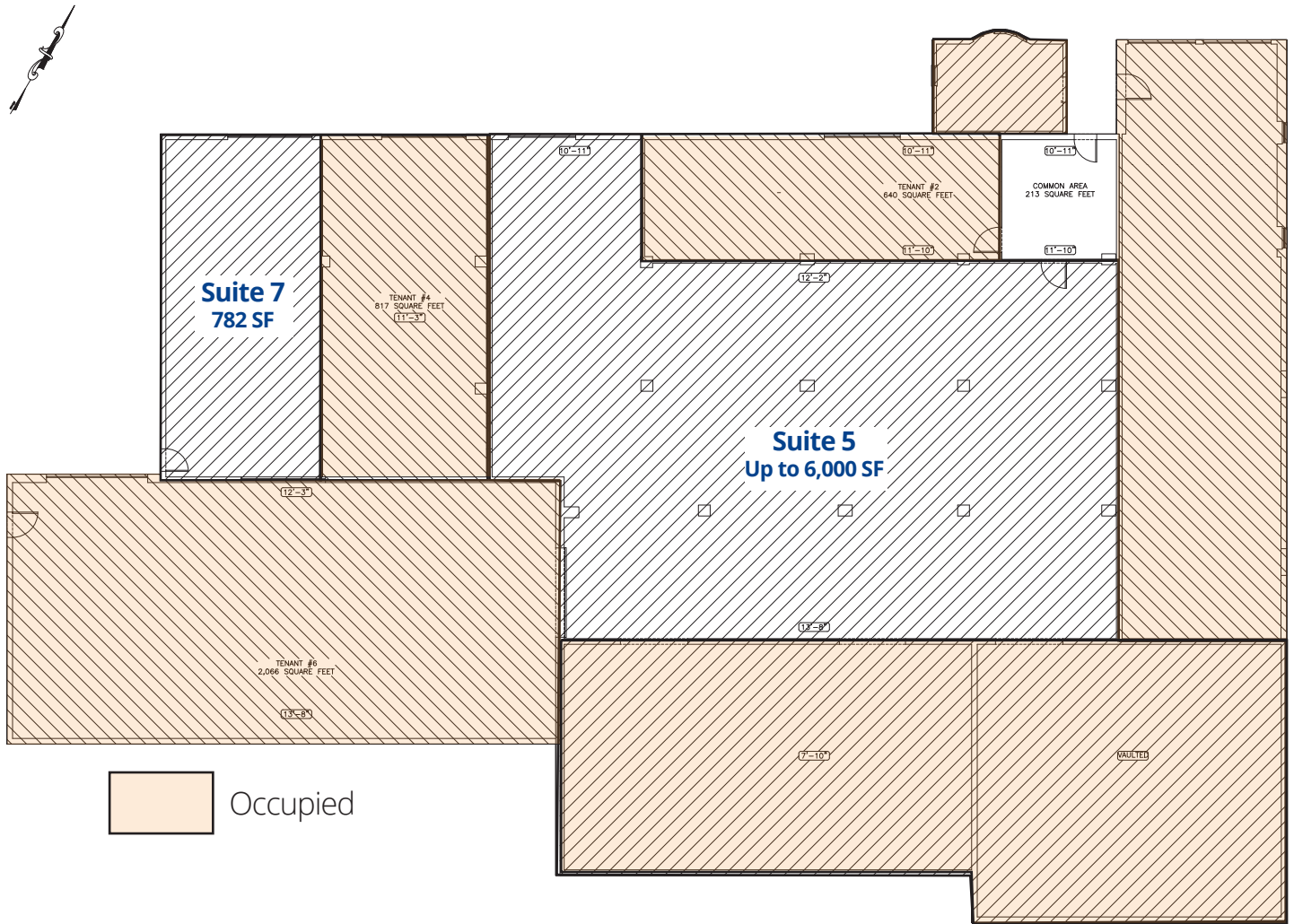
860 616 4028 direct  
 860 877 5880 cell  
 christian.dietz@colliers.com

864 Wethersfield Avenue  
 Hartford, CT 06114  
 860 249 6521 Main

[colliers.com/hartford](http://colliers.com/hartford)

Copyright © 2025 Colliers International. Information herein has been obtained from sources deemed reliable, however its accuracy cannot be guaranteed. The user is required to conduct their own due diligence and verification.

# 12 Highwood Avenue Floor Plan



12 HIGHWOOD AVENUE  
12,210 TOTAL SQUARE FEET

1 EXISTING FLOOR PLAN  
SK.1 SCALE: 3/16"=1'-0"



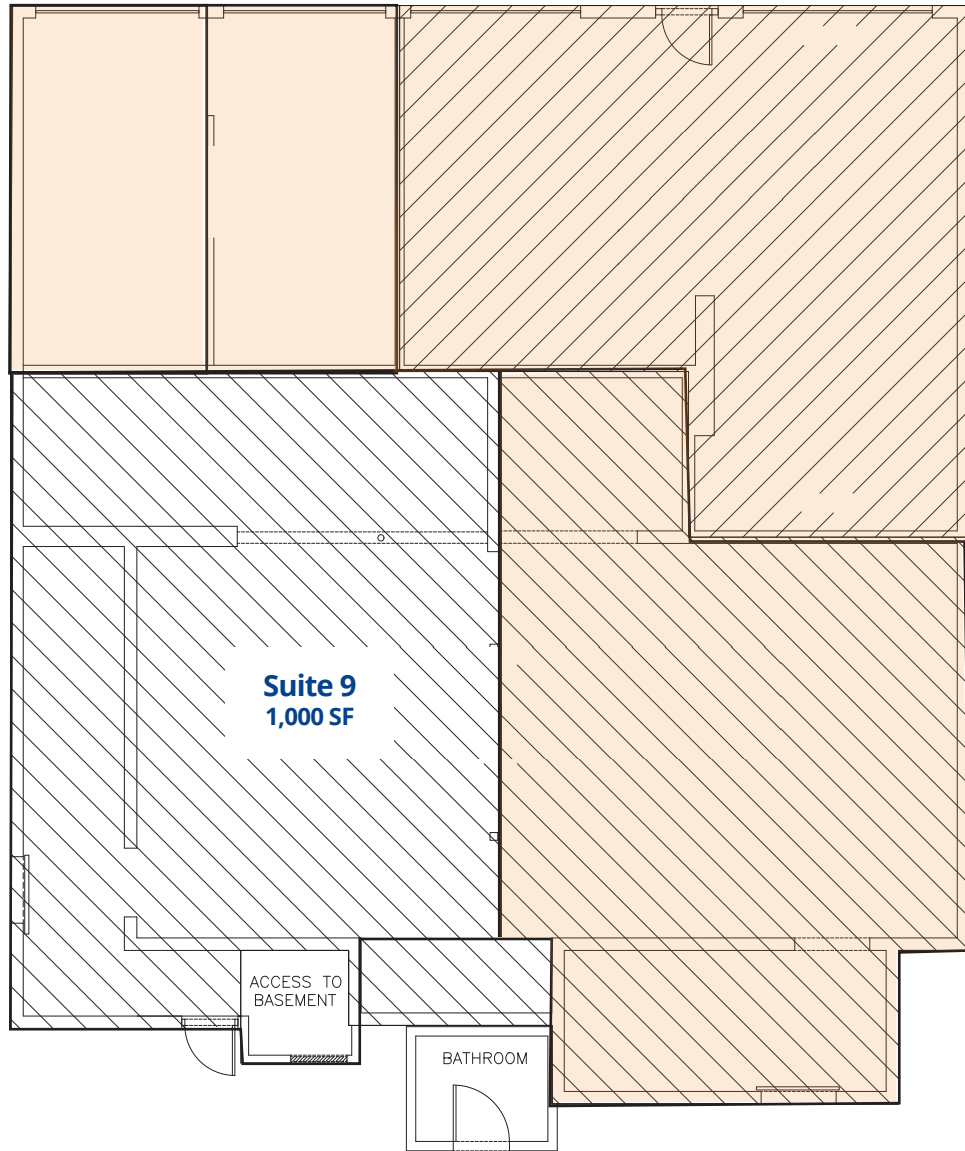
## Contact:

**Christian Dietz**  
860 616 4028 direct  
860 877 5880 cell  
christian.dietz@colliers.com

864 Wethersfield Avenue  
Hartford, CT 06114  
860 249 6521 Main

colliers.com/hartford

# 12 Highwood Avenue Floor Plan



2,823 TOTAL SQUARE FEET



## Contact:

**Christian Dietz**  
860 616 4028 direct  
860 877 5880 cell  
christian.dietz@colliers.com

864 Wethersfield Avenue  
Hartford, CT 06114  
860 249 6521 Main

[colliers.com/hartford](http://colliers.com/hartford)