

RETAIL SPACE SUBLEASE

BROADBENT BUILDING 168 9TH STREET | BOISE, ID 83702



PROPERTY INFORMATION

Property Type:	Retail
Building Size:	18,300 SF
Land Size:	0.14 Acres
NNN Expenses:	\$6.26 PSF YR

SPACE AVAILABLE

Suite	Size	Rate
100	1,475 SF	\$19.00 PSF NNN

HIGHLIGHTS

- » High traffic retail space available for sublease
- » Iconic office building located in the heart of Downtown Boise near numerous amenities
- » Excellent visibility along 9th Street $\pm 14,806$ VPD
- » Storage/Small offices available in the basement as well
- » Contact agent for details



MIKE CHRISTENSEN
208 472 2866
mike.christensen@colliers.com

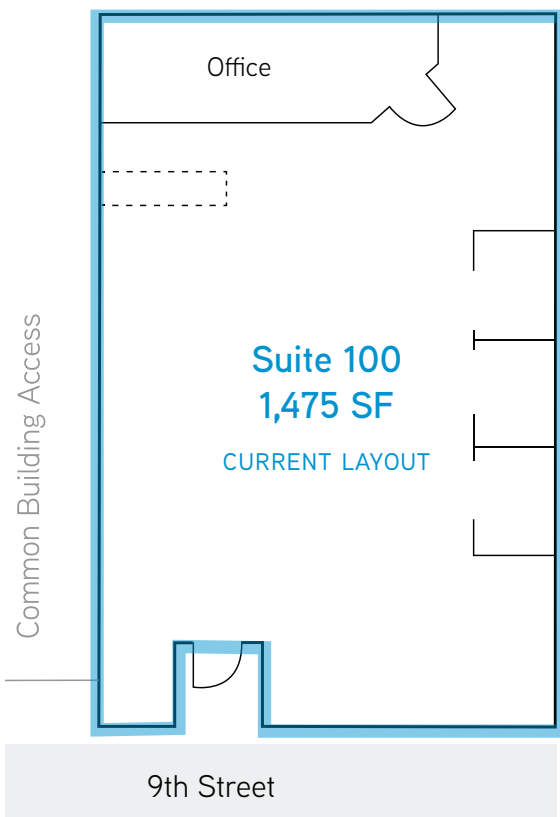
Colliers International Idaho | 755 West Front Street, Suite 300 Boise, Idaho 83702 | www.colliers.com/boise | 208 345 9000

This document has been prepared by Colliers International for advertising and general information only. Colliers International makes no guarantees, representations or warranties of any kind, expressed or implied, regarding the information including, but not limited to, warranties of content, accuracy and reliability. Any interested party should undertake their own inquiries as to the accuracy of the information. Colliers International excludes unequivocally all inferred or implied terms, conditions and warranties arising out of this document and excludes all liability for loss and damages arising there from. This publication is the copyrighted property of Colliers International and/or its licensor(s). ©2016. All rights reserved

RETAIL SPACE SUBLEASE

BROADBENT BUILDING

168 9TH ST | BOISE, ID 83702



Colliers
INTERNATIONAL

MIKE CHRISTENSEN

208 472 2866

mike.christensen@colliers.com