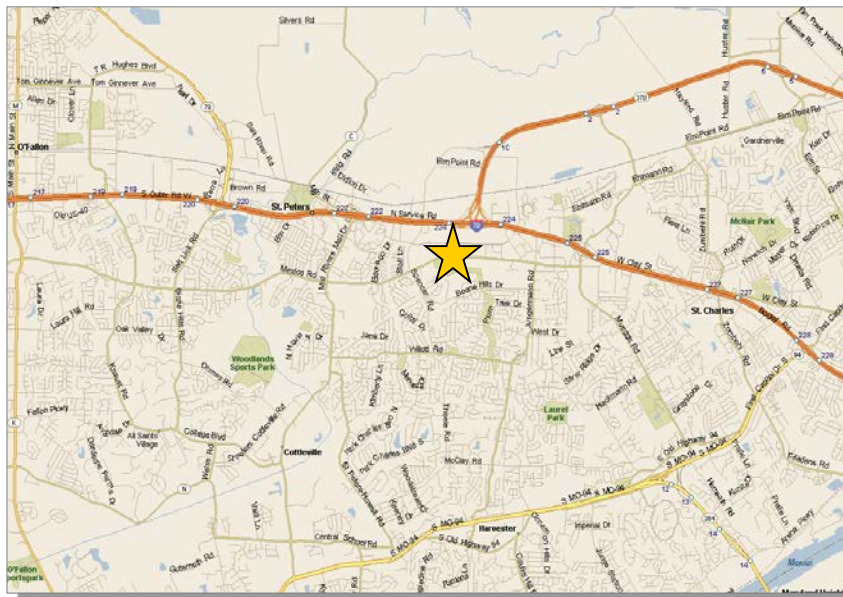


EXECUTIVE CENTRE III



- > 21,372 SF office/medical building
- > 1,500 - 4,253 SF available for lease
- > Impressive brick and glass office building
- > Located in the St. Peters Special Business District
- > Near BJC St. Peters Hospital
- > Across Mexico Road from St. Peters City Center Park & Government Center
- > **LEASE RATE:** \$16.50/SF, full service excluding in-suite janitorial



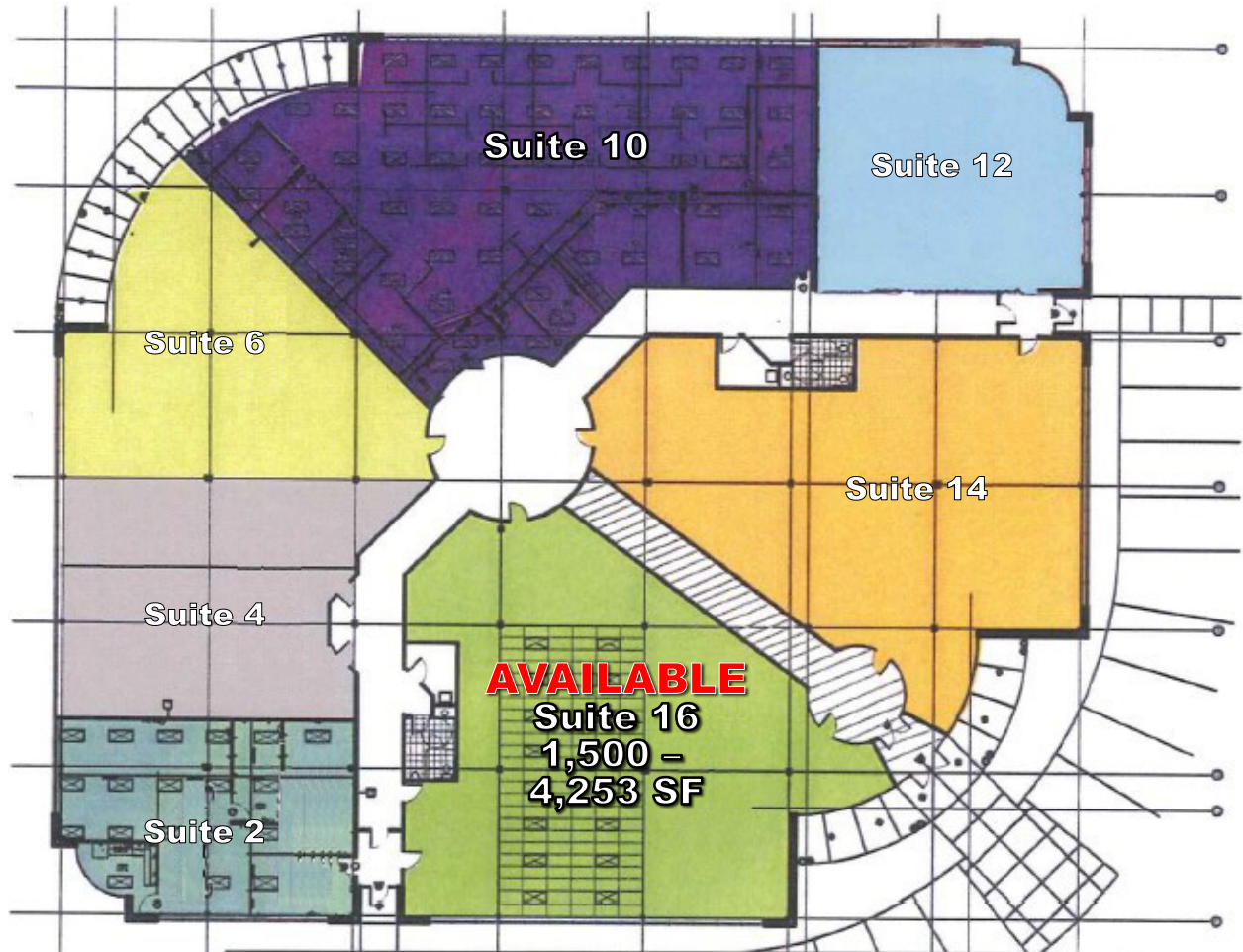
CHAD J. BURKEMPER
Colliers | St. Louis
DIR +1 314 584 6279
chad.burkemper@colliers.com

COLLIERS | ST. LOUIS
101 South Hanley Road, Suite 1400
St. Louis, MO 63105
www.colliers.com

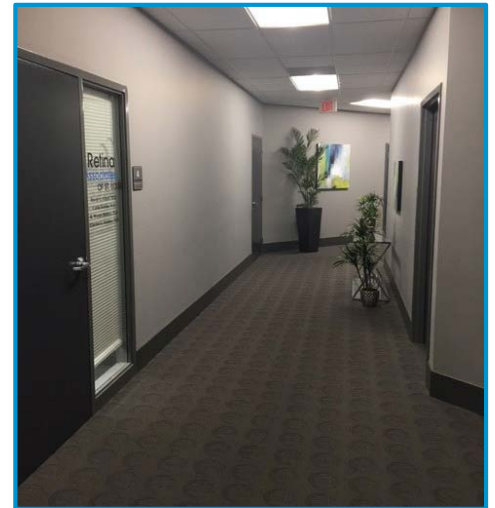
Although all information furnished regarding property for sale, rental or financing is from sources deemed reliable, such information has not been verified, and no express representation is made nor is any to be implied as to the accuracy thereof, and it is submitted subject to errors, omissions, change of price, rental or other conditions, prior sale, lease or financing, or withdrawal without notice.

EXECUTIVE CENTRE III

5700 MEXICO RD, ST PETERS, MO 63376



Recently Renovated Interior



Although all information furnished regarding property for sale, rental or financing is from sources deemed reliable, such information has not been verified, and no express representation is made nor is any to be implied as to the accuracy thereof, and it is submitted subject to errors, omissions, change of price, rental or other conditions, prior sale, lease or financing, or withdrawal without notice.

Colliers
INTERNATIONAL