

FOR LEASE > RETAIL SPACE

# Rainbow Shops



43RD STREET & RAINBOW BOULEVARD, KANSAS CITY, KANSAS

Space  
Available



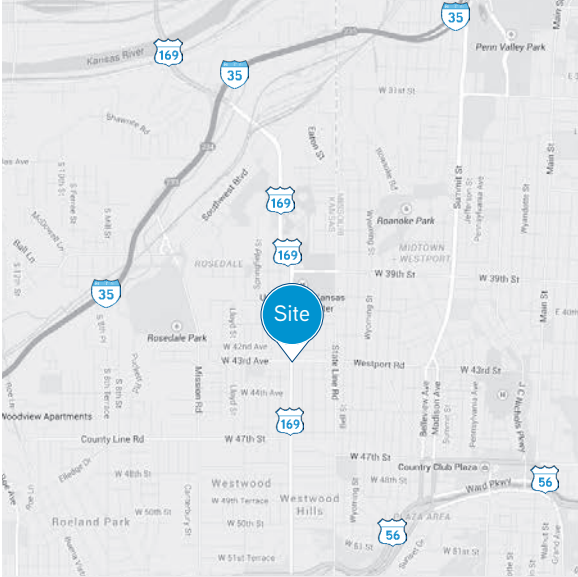
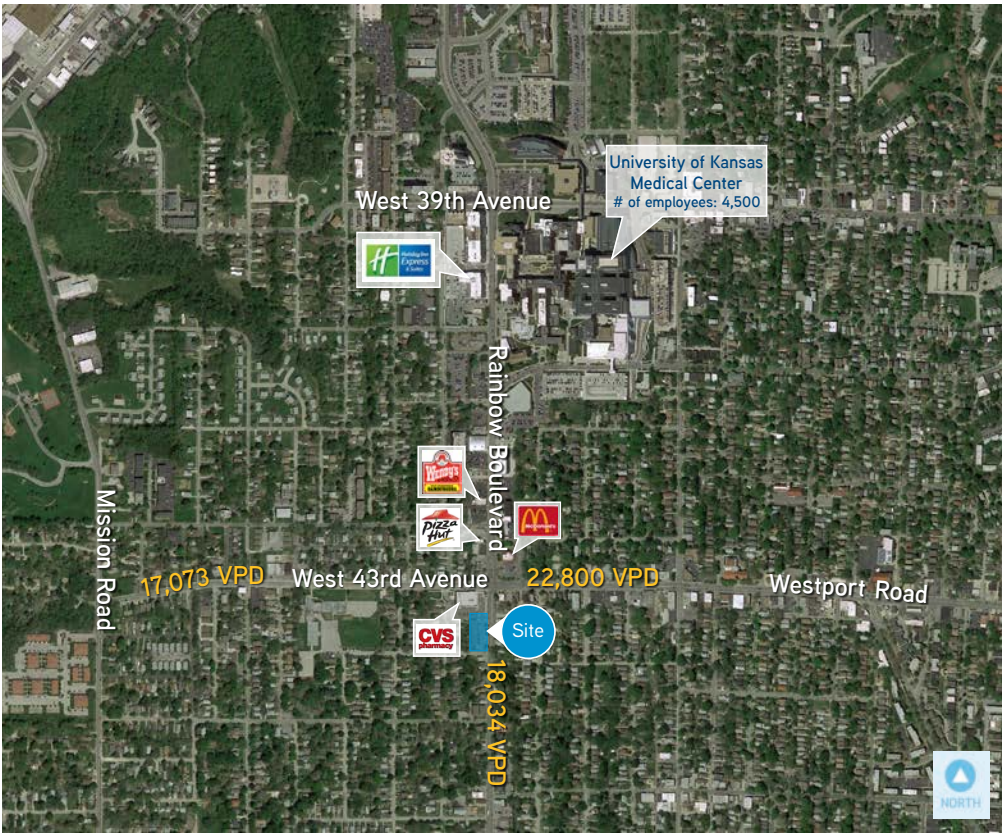
## Property Features

- > South endcap available (1,320 SF)
- > 40,000 vehicles per day at intersection
- > Center is located just a few blocks from KU Medical Center and campus

AGENT: MARK ARENSBERG  
+1 816 556 1107  
KANSAS CITY, MO  
mark.arensberg@colliers.com

COLLIERS INTERNATIONAL  
4520 Main Street, Suite 1000  
Kansas City, MO 64111  
www.colliers.com

# Rainbow Shops > Aerial



## Contact Us

AGENT: MARK ARENSBERG  
+1 816 556 1107  
KANSAS CITY, MO  
[mark.arendsberg@colliers.com](mailto:mark.arendsberg@colliers.com)

## Demographics

	1-Mile	3-Miles	5-Miles
2014 Total Population	16,851	101,911	265,739
2014 Median Income	\$48,274	\$50,061	\$47,386

COLLIERS INTERNATIONAL  
4520 Main Street, Suite 1000  
Kansas City, MO 64111  
[www.colliers.com](http://www.colliers.com)

This document has been prepared by Colliers International for advertising and general information only. Colliers International makes no guarantees, representations or warranties of any kind, expressed or implied, regarding the information including, but not limited to, warranties of content, accuracy and reliability. Any interested party should undertake their own inquiries as to the accuracy of the information. Colliers International excludes unequivocally all inferred or implied terms, conditions and warranties arising out of this document and excludes all liability for loss and damages arising there from. This publication is the copyrighted property of Colliers International and/or its licensor(s). © 2017. All rights reserved.

