



887 EAST ALTAMONTE DRIVE

Key Features

- › Two-story, 18,200 SF office building
- › Zoned: MOR-2, Altamonte Springs
- › Traffic Count: East Altamonte Drive/SR 436 50,000 ADT
- › Best Use: School, Architectural/Engineering or Real Estate office

ROBERT KELLOGG, CCIM
407 362 6163
robert.kellogg@colliers.com

TODD DAVIS, SIOR, CCIM
407 362 6121
todd.davis@colliers.com

COLIN MORRISON
407 362 6153
colin.morrison@colliers.com



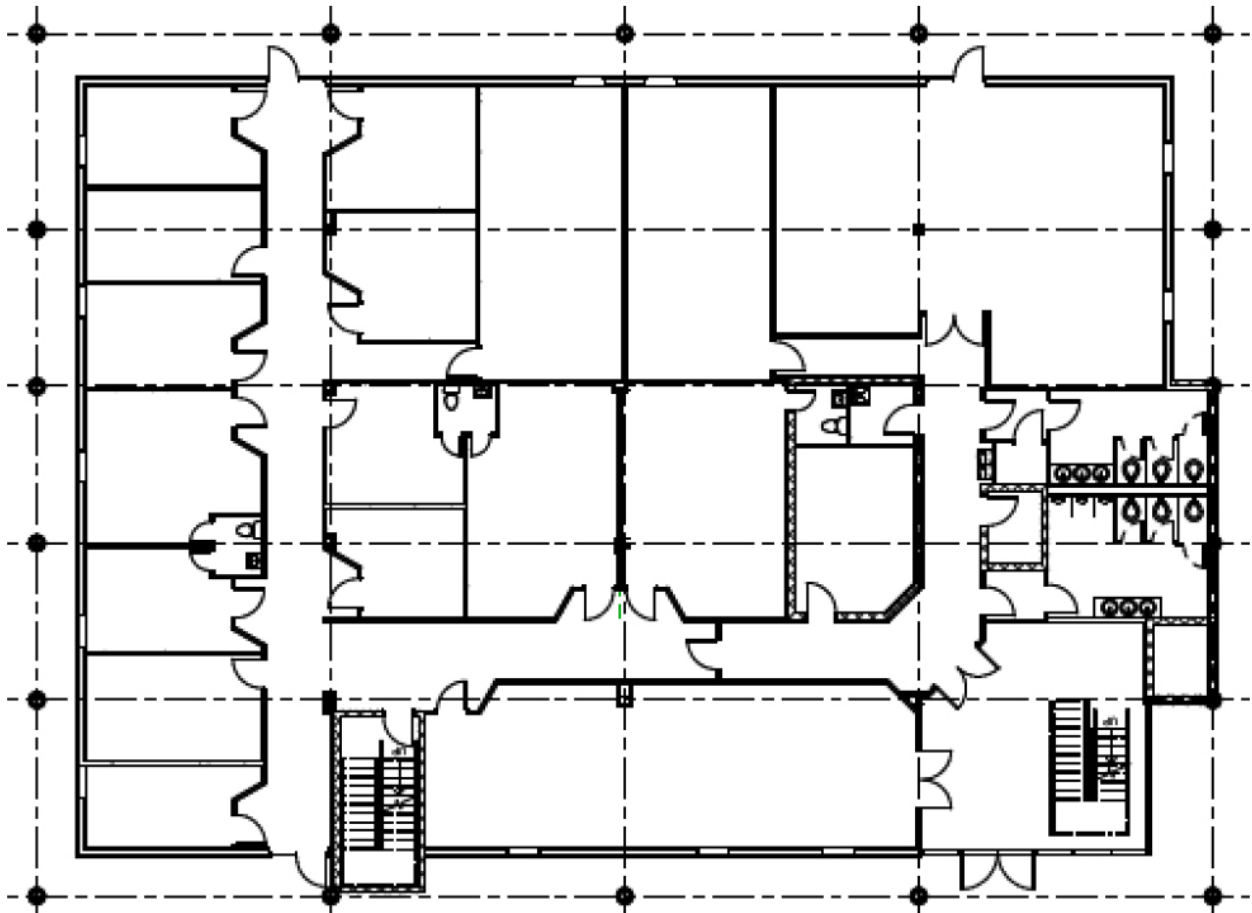
THE PROPERTY

- › Within close proximity to restaurants, hotels and an abundance of retail including Uptown Altamonte
- › Monument signage is available
- › 24 hour access
- › Within walking distance to SunRail and numerous Lynx bus stops
- › Formerly Everglades University

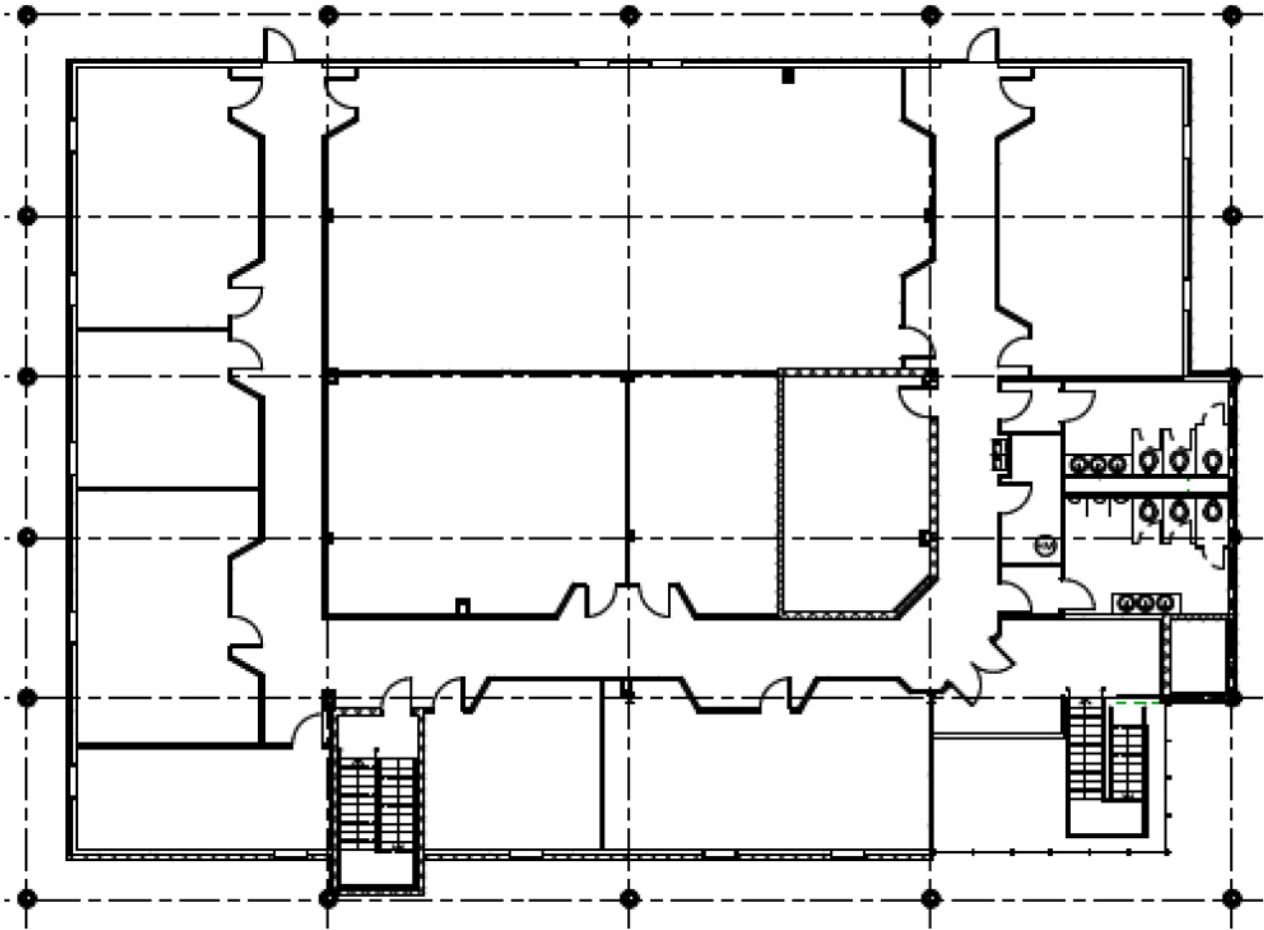
LEASE RATE

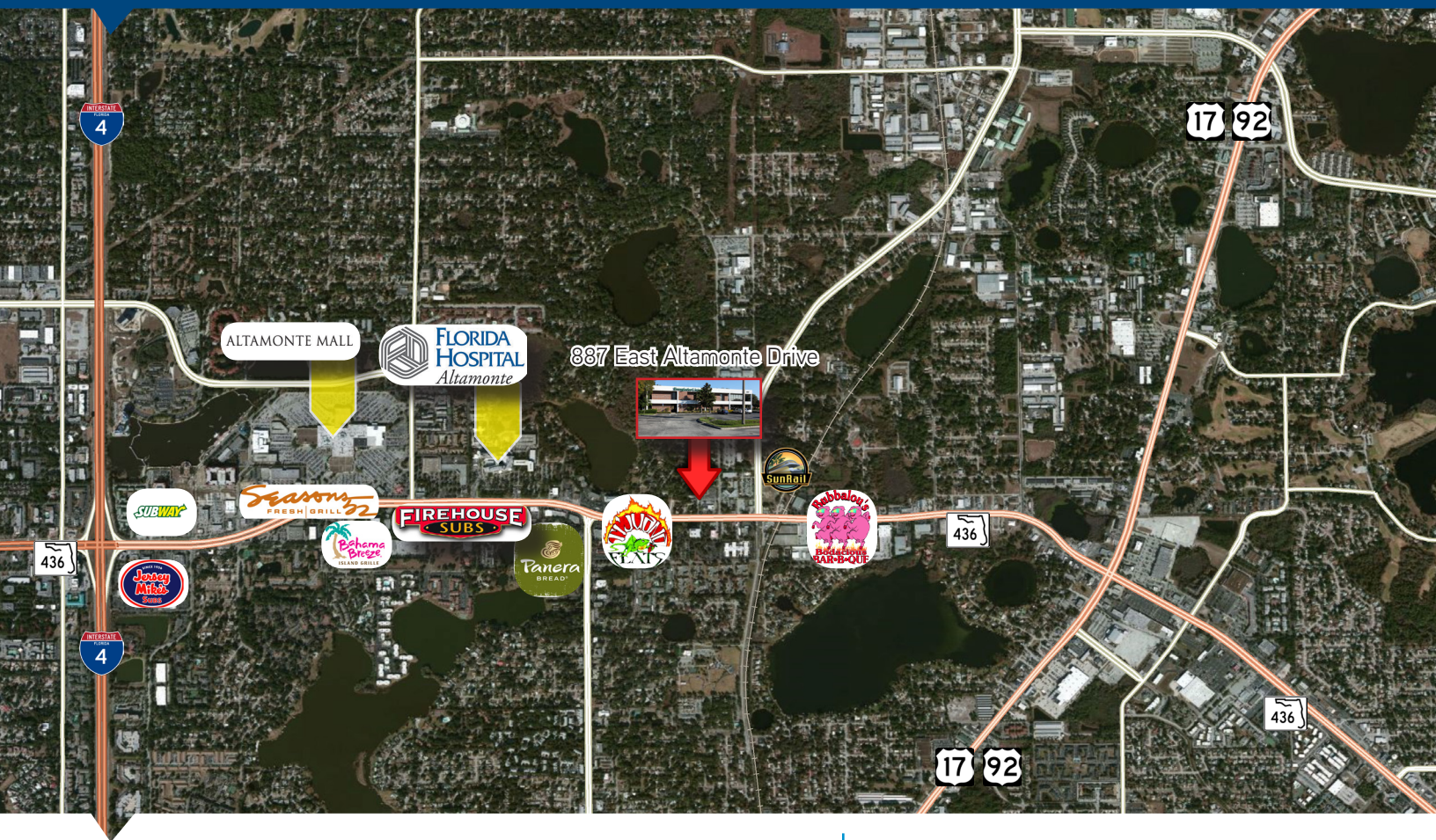
\$9.00 PSF NNN

1st Floor | *9,100 SF*



2nd Floor | 9,100 SF





Contact Us

ROBERT KELLOGG, CCIM
407 362 6163
robert.kellogg@colliers.com

A. TODD DAVIS, SIOR, CCIM
407 362 6121
todd.davis@colliers.com

COLIN MORRISON
407 362 6153
colin.morrison@colliers.com

This document/email has been prepared by Colliers International for advertising and general information only. Colliers International makes no guarantees, representations or warranties of any kind, expressed or implied, regarding the information including, but not limited to, warranties of content, accuracy and reliability. Any interested party should undertake their own inquiries as to the accuracy of the information. Colliers International excludes unequivocally all inferred or implied terms, conditions and warranties arising out of this document and excludes all liability for loss and damages arising there from. This publication is the copyrighted property of Colliers International and/or its licensor(s). © 2016. All rights reserved. This communication is not intended to cause or induce breach of an existing listing agreement.



COLLIERS INTERNATIONAL
255 South Orange Avenue
Suite 1300
Orlando, FL 32801
www.colliers.com