

FOR SUBLEASE > OFFICE SPACE

2320 Grande Blvd SE Suite D



2320 GRANDE BLVD SE, RIO RANCHO, NM 87124



2320 Grande Blvd SE Suite D

- > Sublease Rate: \$17.00 SF/Yr Thru 03/31/2018
\$17.50 SF/Yr 04/01/2018 - 03/31/2019
- > Lease Type: Modified Gross
(Tenant Pays Gas, Electric & Janitorial)
- > Available Space: +/-1,701 SF
- > Zoning: C-1

Building Amenities

- > Sublease through 03/31/2019
- > Beautiful first generation office space in Rio Rancho, NM
- > Located near Intel and Rust Presbyterian Medical Center
- > Suite D Buildout includes:
 - 7 offices
 - ADA Restroom
 - Kitchen
 - Storage Room
 - Reception area
- > Move-in ready!

Contact Us

ANNE APICELLA
VICE PRESIDENT
+1 505.880.7059
NM LIC.#39337
ALBUQUERQUE, NM 87109
Anne.Apicella@colliers.com

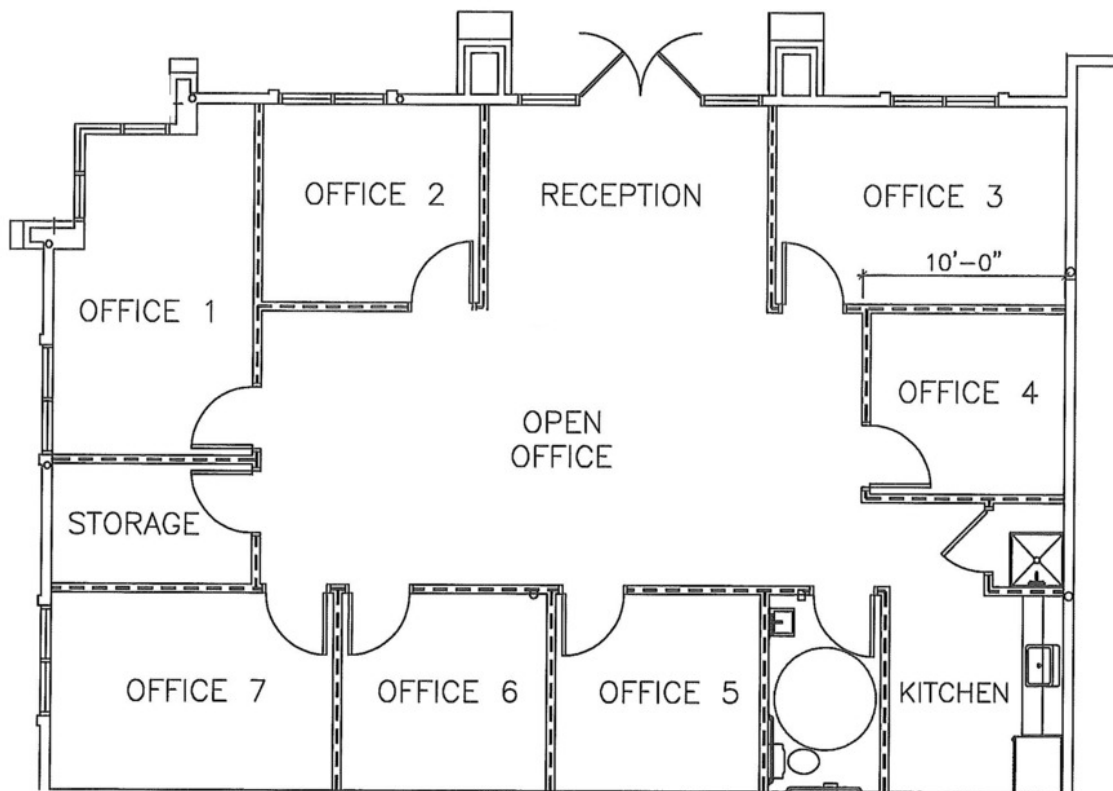
Independently Owned And Operated

The information contained herein was obtained from sources believed reliable, however, Colliers International makes no guarantees, warranties, or representations as to the completeness or accuracy thereof. The presentation of this property is submitted subject to errors, omissions, change of price or conditions prior to sale or lease, or withdrawal without notice.

COLLIERS INTERNATIONAL
+1 505 883 7676 Main
5051 Journal Center Blvd NE, Suite 200
Albuquerque, NM 87109
colliers.com/en-us/newmexico

2320 Grande Blvd SE Suite D

2320 GRANDE BLVD SE, RIO RANCHO, NM 87124



ANNE APICELLA
+1 505.880.7059
Anne.Apicella@colliers.com
NM Lic.#39337

COLLIERS NEW MEXICO
505.883.7676
5051 Journal Center Blvd NE, Suite 200
Albuquerque, NM 87109
colliers.com/en-us/newmexico