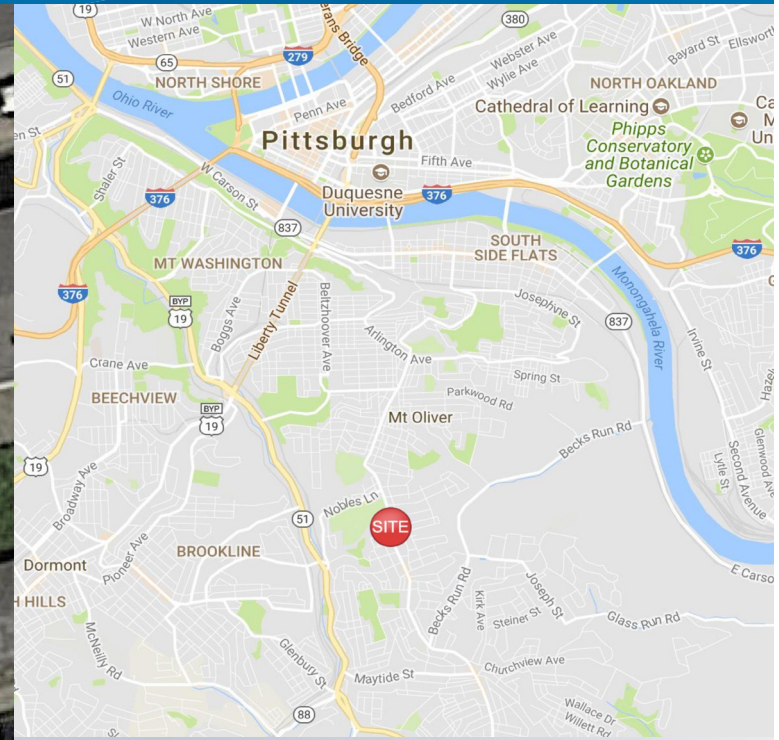
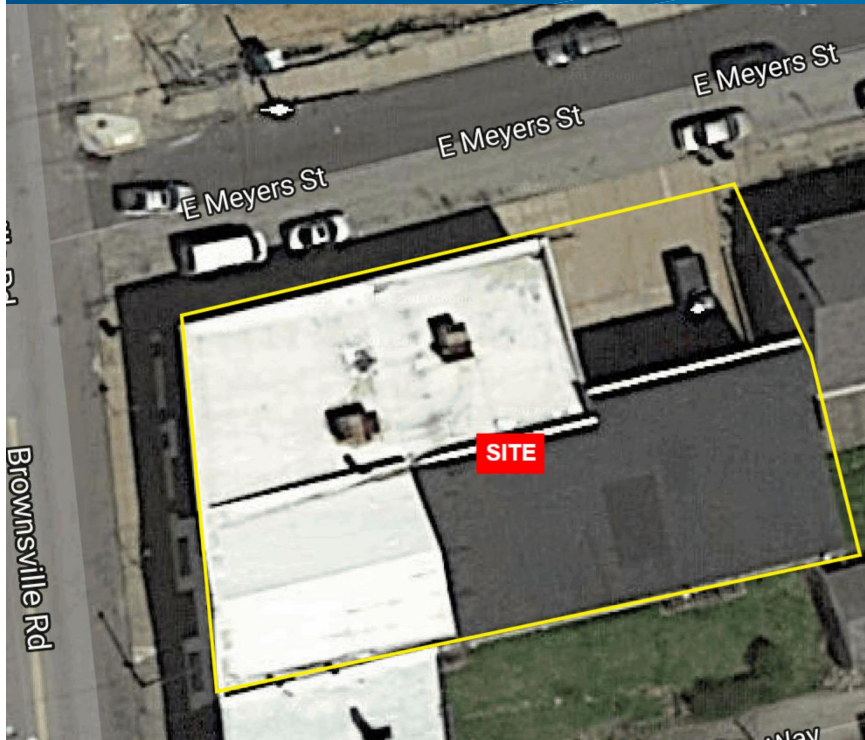


FOR SALE > RETAIL & WAREHOUSE | 3 BUILDINGS

1601 Brownsville Road

PITTSBURGH, PA 15210

\$275,000



Property Highlights

- > Redevelopment opportunity along Brownsville Road in the City of Pittsburgh's emerging Carrick neighborhood
- > 3 Buildings
 - 2 Warehouses
 - 1 Office/Retail
- > Building 1 - Approximately 2,650 SF warehouse
 - 53' Frontage on Brownsville Road
 - 1 Drive in door
- > Building 2 - Approximately 2,991 SF office/retail
 - 44' Frontage on Brownsville Road
- > Building 3 - Approximately 5,900 SF warehouse
 - 1 Drive in door
 - High bay storage space



JUSTIN KLINE
ASSOCIATE | PITTSBURGH
INVESTMENT SERVICES
412 321 4200 | EXT. 203
justin.kline@colliers.com






GREGG BROUJOS
MANAGING DIRECTOR & FOUNDING
PRINCIPAL | PITTSBURGH
412 321 4200 | EXT. 206
gregg.broujos@colliers.com

COLLIERS INTERNATIONAL | PITTSBURGH
Two Gateway Center
603 Stanwix Street, Suite 125
Pittsburgh, PA 15222
www.colliers.com/pittsburgh

1601 Brownsville Road



Demographics

	1 Mile	3 Miles	5 Miles	10 Miles
Population 	17,326	141,731	370,271	881,421
Number of Households 	7,432	61,772	165,010	391,808
Average Household Income 	\$59,107	\$67,591	\$77,341	\$78,001
Number of Businesses 	366	7,966	22,824	43,828
Number of Employees 	3,163	126,528	367,804	597,086



Property Info.

- Assessed Value: \$200,800
- Property Taxes: \$4,546
- Lot & Block: 60-G-147
- Building 1: Duro-last roof approximately 2 years old
- Building 2: Duro-last roof approximately 7 years old
- 97 Feet of frontage on Brownsville Road



The information contained herein has been given to us by the owner of the property or other sources we deem reliable. We have no reason to doubt its accuracy, but we do not guarantee it. All information should be verified prior to purchase or lease.

COLLIERS INTERNATIONAL | PITTSBURGH
Two Gateway Center
603 Stanwix Street, Suite 125
Pittsburgh, PA 15222
www.colliers.com/pittsburgh