

FOR LEASE > OFFICE SPACE



Quaint Downtown Office Space

301 EDITH BLVD. NE, ALBUQUERQUE, NM 87102

Quaint Downtown Office Space

- > Lease Rate: \$12/SF (net of G, E & J)
- > Lease Type: MGRS
- > Available Space: 2,309 SF
- > Zoning: SU-2 RO

Highlights

- > Convenient office space located in the East Downtown corridor
- > Second floor space
- > Ideal for back office use or medical billing



Contact Us

BEN PERICH
ASSOCIATE BROKER
+1 505 880 7054
ALBUQUERQUE, NM
ben.perich@colliers.com

COLLIERS INTERNATIONAL
+1 505 883 7676 Main
2424 Louisiana Blvd NE, Suite 300
Albuquerque, NM 87110
www.colliers.com

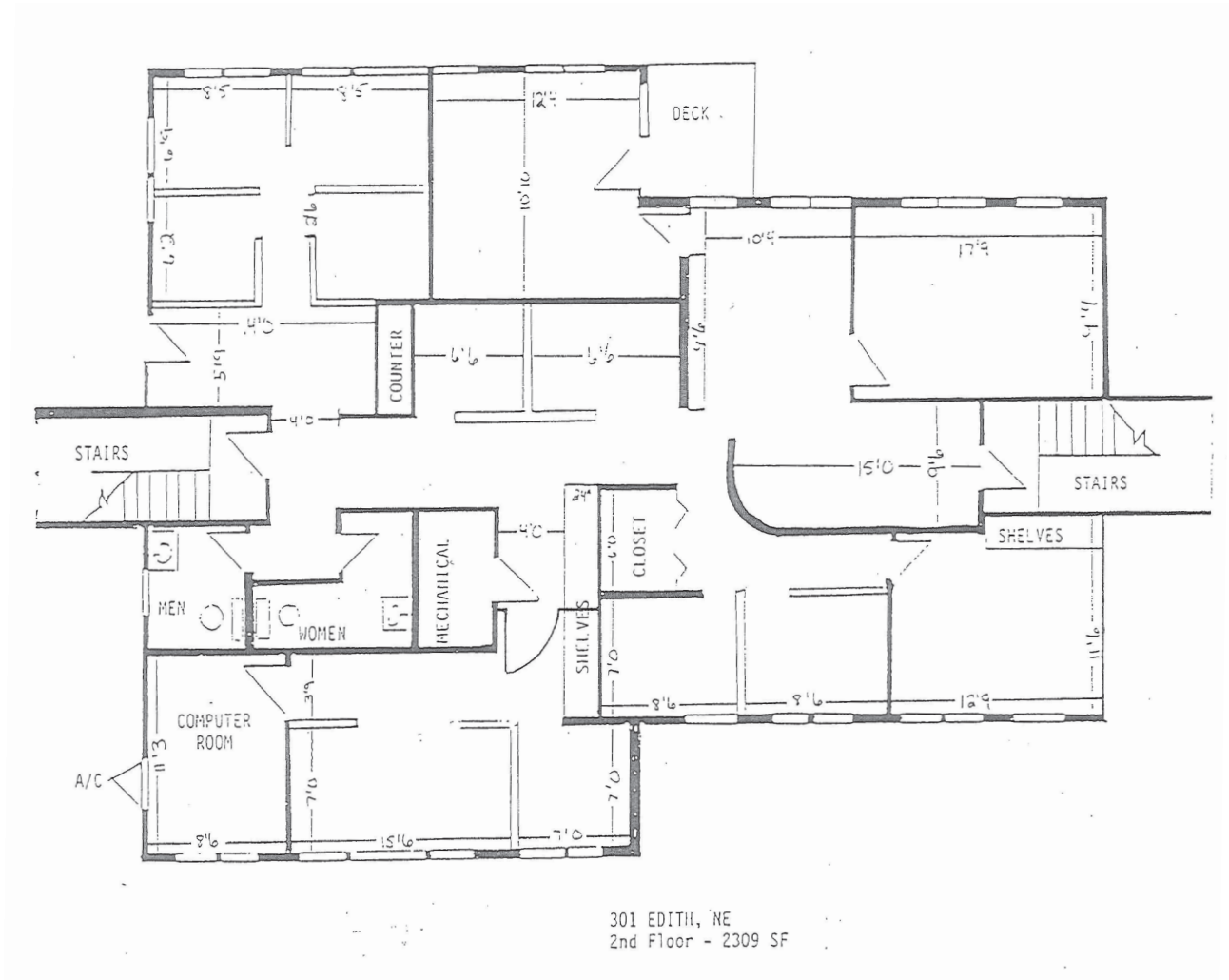
Independently Owned and Operated

The information contained herein was obtained from sources believed reliable; however, Colliers International makes no guarantees, warranties or representations as to the completeness or accuracy thereof. The presentation of this property is submitted subject to errors, omissions, change of price or conditions prior to sale or lease, or withdrawal without notice.

FOR LEASE > OFFICE SPACE

Floorplan: 2nd Floor

301 EDITH BLVD. NE, ALBUQUERQUE, NM 87102



COLLIERS INTERNATIONAL
+1 505 883 7676 Main
2424 Louisiana Blvd NE, Suite 300
Albuquerque, NM 87110
www.colliers.com

FOR LEASE > OFFICE SPACE

Aerial

301 EDITH BLVD. NE, ALBUQUERQUE, NM 87102



COLLIERS INTERNATIONAL

+1 505 883 7676 Main

2424 Louisiana Blvd NE, Suite 300

Albuquerque, NM 87110

www.colliers.com