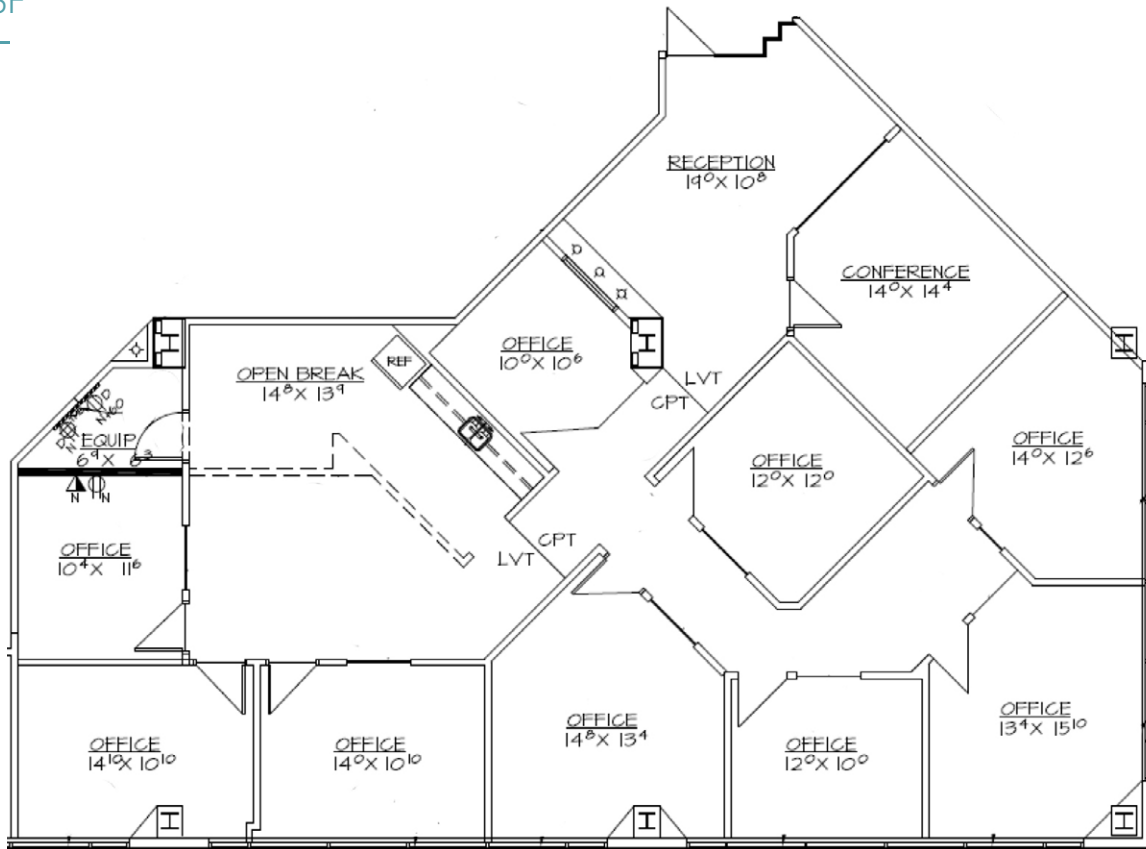


# Paradise Valley Corporate Center

## FLOOR PLAN

Suite 325

±3,134 SF



### Point of Contact

**Matt Baniszewski**

Vice President

602 222 5176

[matt.baniszewski@colliers.com](mailto:matt.baniszewski@colliers.com)

**Todd Noel, CCIM**

Vice Chairman

602 222 5190

[todd.noel@colliers.com](mailto:todd.noel@colliers.com)

