

FOR SALE > ±0.79 ACRES

General Commercial Site



4208 HARDSCRABBLE RD. COLUMBIA, SOUTH CAROLINA 29223



Property Details

- > Approximately ±0.79 acres of land near the intersection of Hardscrabble Road and Jaybird Lane and 0.2 miles from Clemson Road.
- > Zoned GC (General Commercial)
- > All utilities available to the site
- > Rough-graded
- > Traffic Counts (2016):
 - Hardscrabble Road: 17,100 VPD
 - Clemson Road: 24,000 VPD
- > Price: ~~\$299,000~~ \$239,000

Demographics - 2017 Estimate

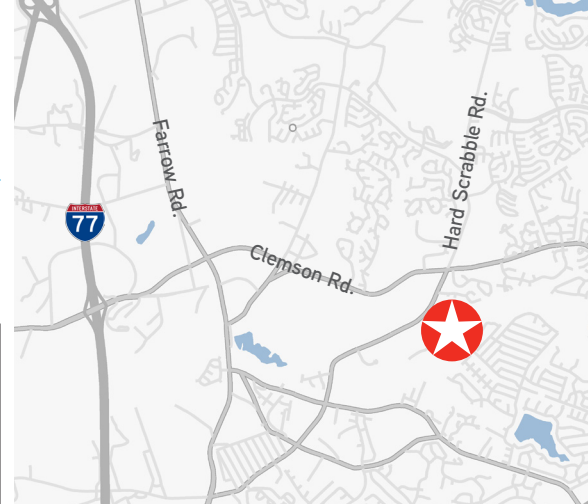
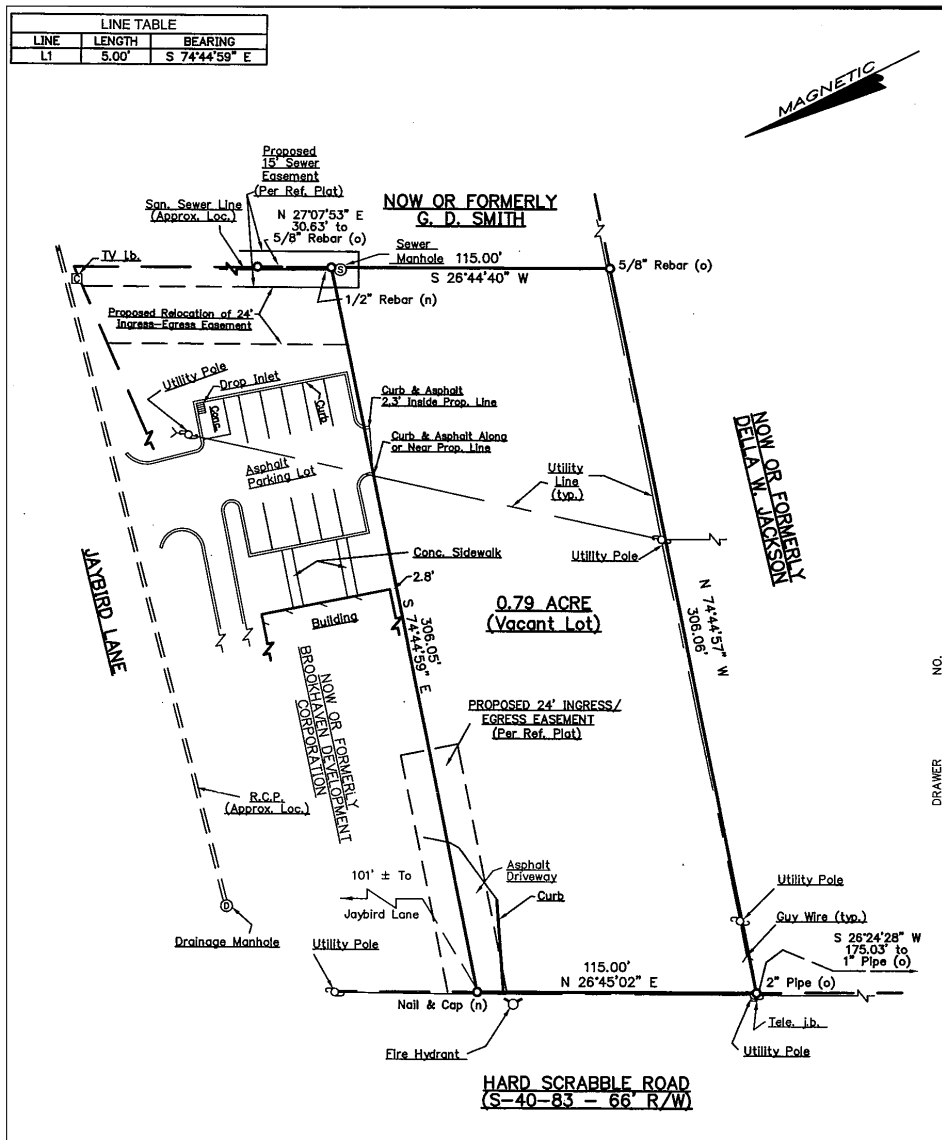
	1 Mile	3 Miles	5 Miles
Population:	7,118	60,016	116,553
Households:	2,831	22,091	44,126
Average Household Income:	\$69,110	\$84,262	\$84,342

CRAIG WAITES
803 401 4224 DIRECT
craig.waites@colliers.com

BRAXTON TAYLOR
803 401 4255 DIRECT
braxton.taylor@colliers.com

COLLIERS INTERNATIONAL
1301 Gervais Street, Suite 600
Columbia, South Carolina 29201
www.colliers.com

±0.79 Acres Hardscrabble Rd. > Plat



Contact Us

CRAIG WAITES
803 401 4224 DIRECT
craig.waites@colliers.com

BRAXTON TAYLOR
803 401 4255 DIRECT
braxton.taylor@colliers.com

COLLIERS INTERNATIONAL
1301 Gervais Street
Suite 600
Columbia, South Carolina 29201
www.colliers.com