

FOR SALE > ±0.79 ACRES

# General Commercial Site



4208 HARDSCRABBLE RD. COLUMBIA, SOUTH CAROLINA 29223



## Property Details

- > Approximately ±0.79 acres of land near the intersection of Hardscrabble Road and Jaybird Lane and 0.2 miles from Clemson Road.
- > Zoned GC (General Commercial)
- > All utilities available to the site
- > Rough-graded
- > Traffic Counts (2016):
  - Hardscrabble Road: 17,100 VPD
  - Clemson Road: 24,000 VPD
- > Price: ~~\$299,000~~ \$239,000

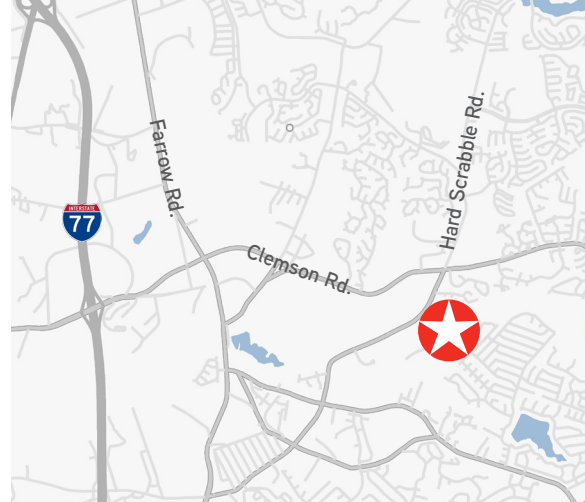
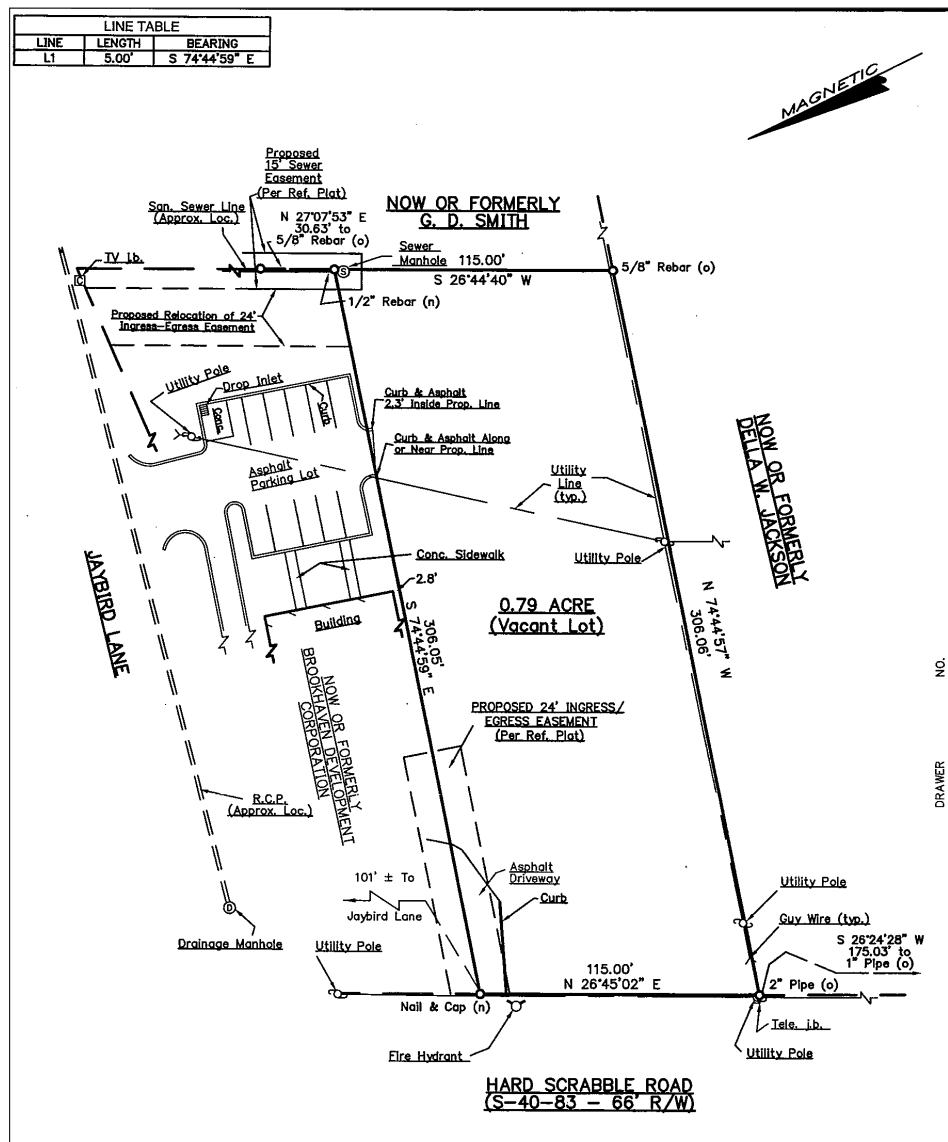
### Demographics - 2017 Estimate

	1 Mile	3 Miles	5 Miles
Population:	7,118	60,016	116,553
Households:	2,831	22,091	44,126
Average Household Income:	\$69,110	\$84,262	\$84,342

CRAIG WAITES  
803 401 4224 DIRECT  
craig.waites@colliers.com

COLLIERS INTERNATIONAL  
1301 Gervais Street, Suite 600  
Columbia, South Carolina 29201  
www.colliers.com

# ±0.79 Acres Hardscrabble Rd. > Plat



## Contact Us

CRAIG WAITES

803 401 4224 DIRECT

[craig.waites@colliers.com](mailto:craig.waites@colliers.com)

COLLIERS INTERNATIONAL  
1301 Gervais Street  
Suite 600  
Columbia, South Carolina 29201  
[www.colliers.com](http://www.colliers.com)