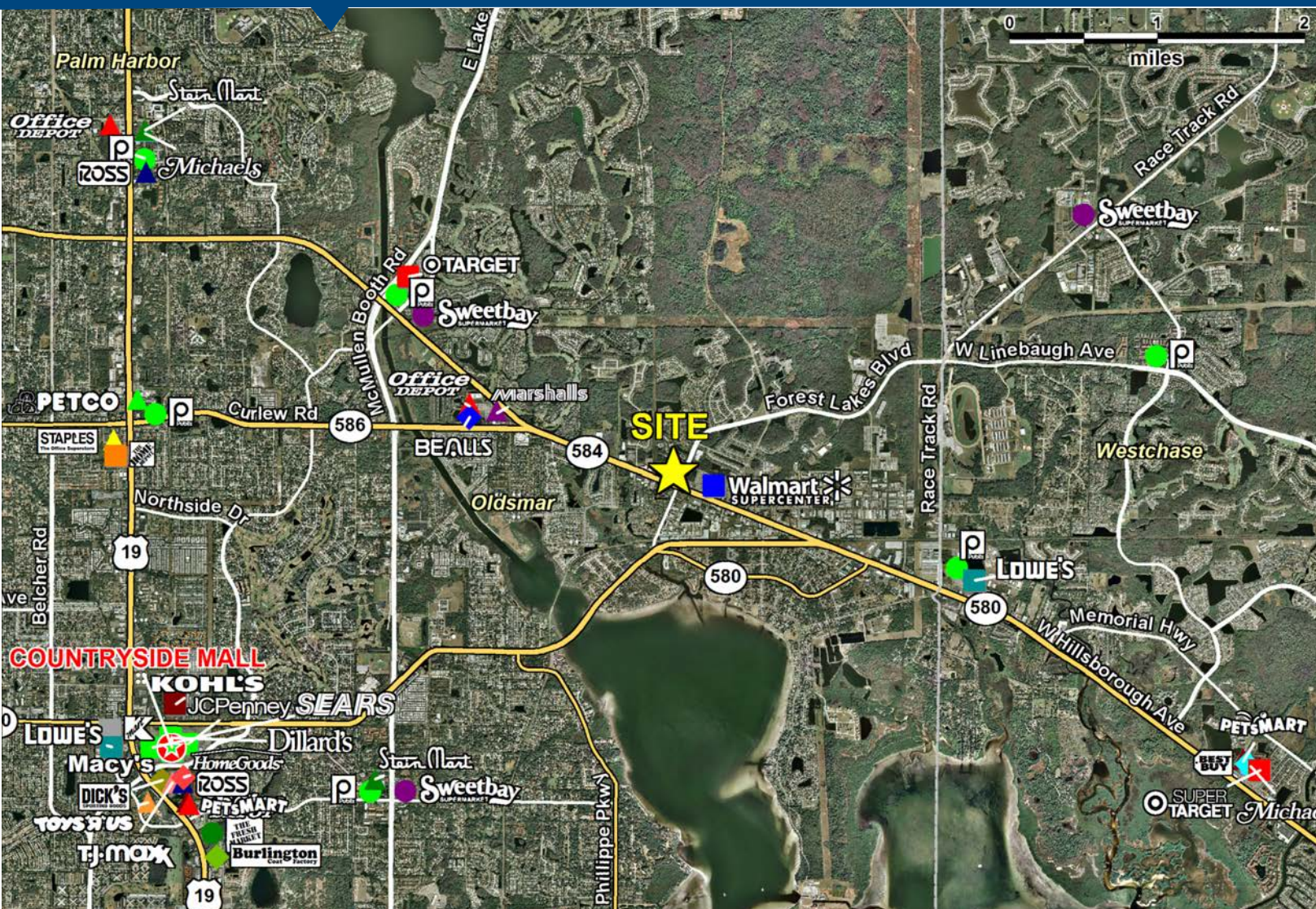


# Forest Lakes Plaza

3705 Tampa Road, Oldsmar, FL 34677 - Pinellas County

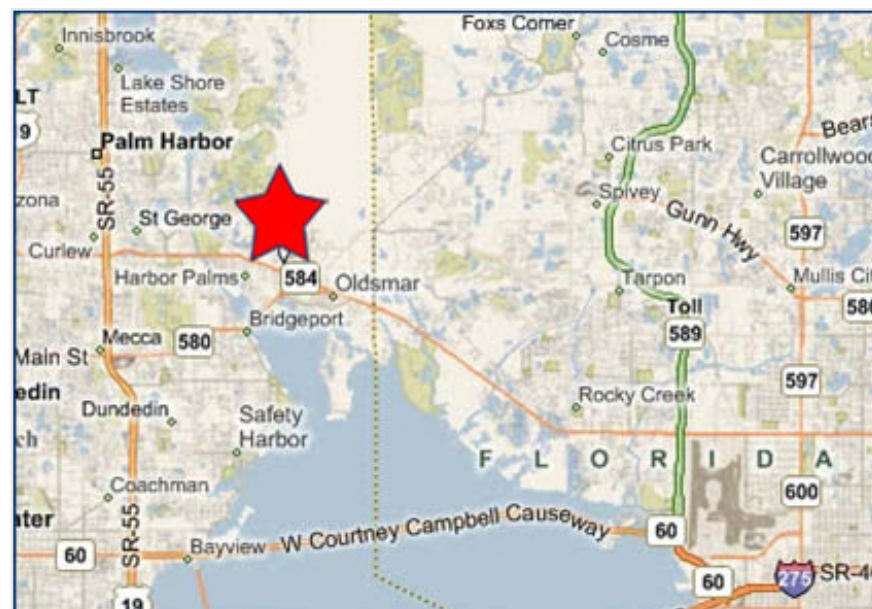


Join:



**ROSS**  
DRESS FOR LESS

**ACE**  
The helpful place.



## Contact Us

**LISA McCAFFREY**  
Executive Managing Director  
Retail Services  
+1 813 871 8519  
[lisa.mccaffrey@colliers.com](mailto:lisa.mccaffrey@colliers.com)

**STEPHANIE ADDIS**  
Director  
Retail Services  
+1 813 222 0484  
[stephanie.addis@colliers.com](mailto:stephanie.addis@colliers.com)

- Ross Dress For Less and ALDI NOW OPEN!
- High Income, densely populated trade area
- Intersection shared with a Walmart Supercenter
- North West Corner Tampa Road at Forest Lakes Boulevard
- Centrally located between Westchase and East Lake linking two affluent trade areas
- 5 mile population of 164,207 with average household income of \$79,565

This document has been prepared by Colliers International Tampa Bay Florida for advertising and general information only. Colliers International Tampa Bay Florida makes no guarantees, representations or warranties of any kind, expressed or implied, regarding the information including, but not limited to, warranties of content, accuracy and reliability. Any interested party should undertake their own inquiries as to the accuracy of the information. Colliers International Tampa Bay Florida excludes unequivocally all inferred or implied terms, conditions and warranties arising out of this document and excludes all liability for loss and damages arising there from. This publication is the copyrighted property of Colliers International and/or its licensor(s). © 2012. All rights reserved.



**COLLIERS INTERNATIONAL**  
4830 W. Kennedy Blvd., Suite 300  
Tampa, FL 33609  
813 221 2290  
[www.colliers.com](http://www.colliers.com)

**LISA McCAFFREY**  
Executive Managing Director  
Retail Services  
+1 813 871 8519  
[lisa.mccaffrey@colliers.com](mailto:lisa.mccaffrey@colliers.com)

**STEPHANIE ADDIS**  
Director  
Retail Services  
+1 813 222 0484  
[stephanie.addis@colliers.com](mailto:stephanie.addis@colliers.com)







| SUITE # | TENANT                  | SF     |
|---------|-------------------------|--------|
| 1       | Brightway Insurance     | 986    |
| 1A      | Kimberly Perry, CPA     | 784    |
| 2       | Managed Staffing        | 1,117  |
| 3       | Tampa Bay Dance Academy | 3,619  |
| 4       | Smallcakes              | 1,595  |
| 5       | Sushi-Thai Restaurant   | 3,200  |
| 6       | Italian Restaurant      | 3,136  |
| 7       | Nail Salon              | 1,268  |
| 8       | Ace Hardware            | 10,600 |
| 9       | Available               | 2,043  |
| 10      | Available               | 2,500  |
| 11      | Pet Boutique            | 2,500  |
| 12A     | ALDI Foods              | 19,000 |
| 12B     | Ross Dress for Less     | 24,448 |
| 17      | Available               | 1,750  |
| 19      | Pharmacy                | 1,070  |
| 20      | Supercuts               | 1,400  |
| 21      | Available               | 2,369  |
| 22      | Atlantis Clinic         | 2,153  |
| TOTAL   |                         | 85,538 |

| DEMOGRAPHICS       |          |          |          |
|--------------------|----------|----------|----------|
|                    | 1 Mile   | 3 Miles  | 5 Miles  |
| Total Population   | 8,982    | 54,006   | 164,207  |
| Daytime Population | 6,407    | 23,748   | 61,473   |
| Avg. HH Income     | \$69,094 | \$82,309 | \$79,565 |
| Median Age         | 38.4     | 46.7     | 46.2     |