

FOR LEASE > OFFICE



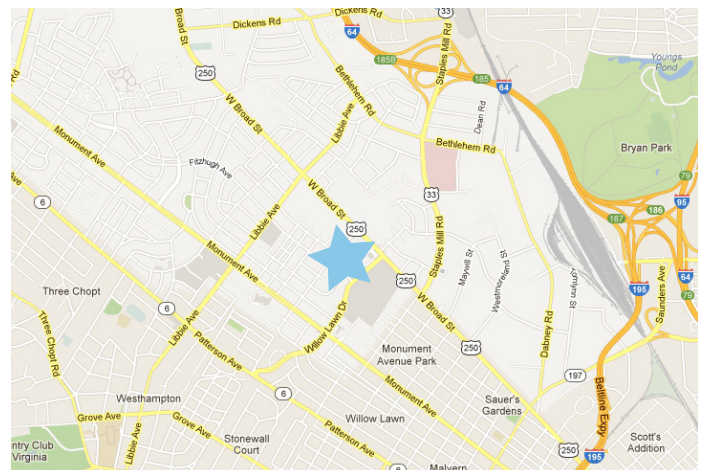
# 5206 Markel Road

CONTINENTAL BUILDING | RICHMOND, VA 23226



## Property Features

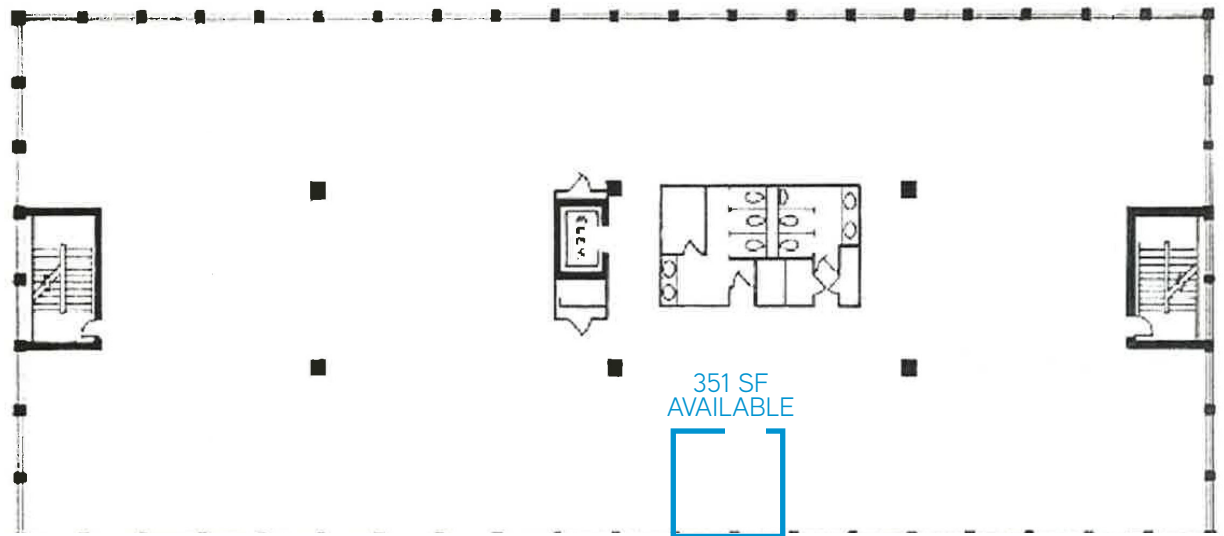
- > 351 SF available on the first floor
- > Across from The Shops at Willow Lawn
- > Immediate access to bus line
- > On-site parking



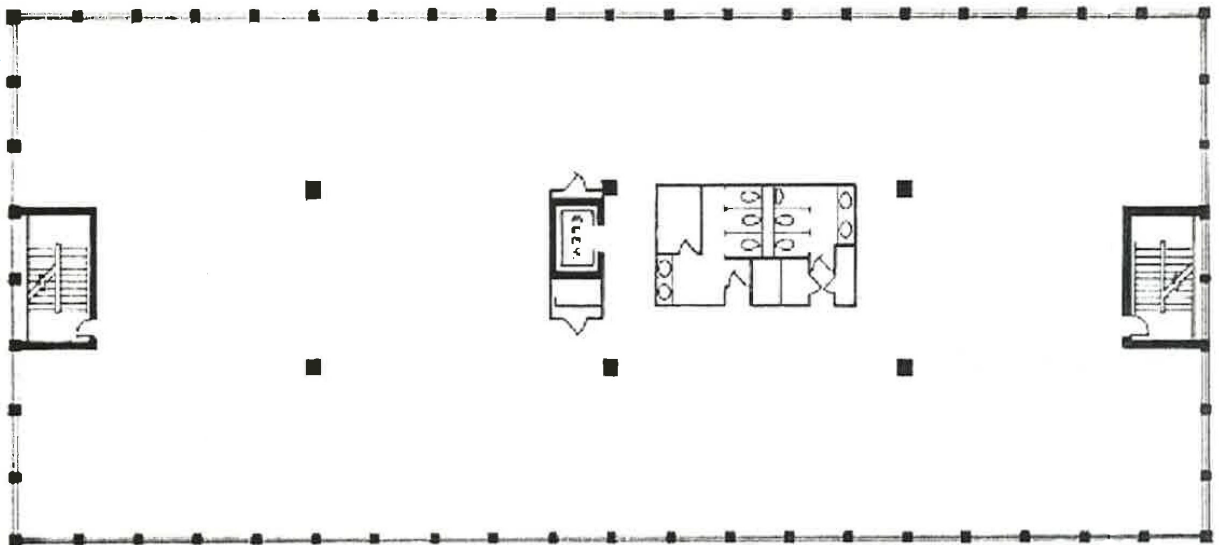
AGENT: SCOTT WHITE, SIOR, CCIM  
804 591 2416  
RICHMOND, VA  
[scott.white@colliers.com](mailto:scott.white@colliers.com)

COLLIERS INTERNATIONAL  
7200 Glen Forest Drive, Suite 200  
Richmond, VA 23226  
[www.colliers.com/richmond](http://www.colliers.com/richmond)

First Floor  
> 351 SF  
available



Second Floor  
100% leased



Third Floor  
100% leased

