



# FOR LEASE: WAKE FOREST PROFESSIONAL CENTER

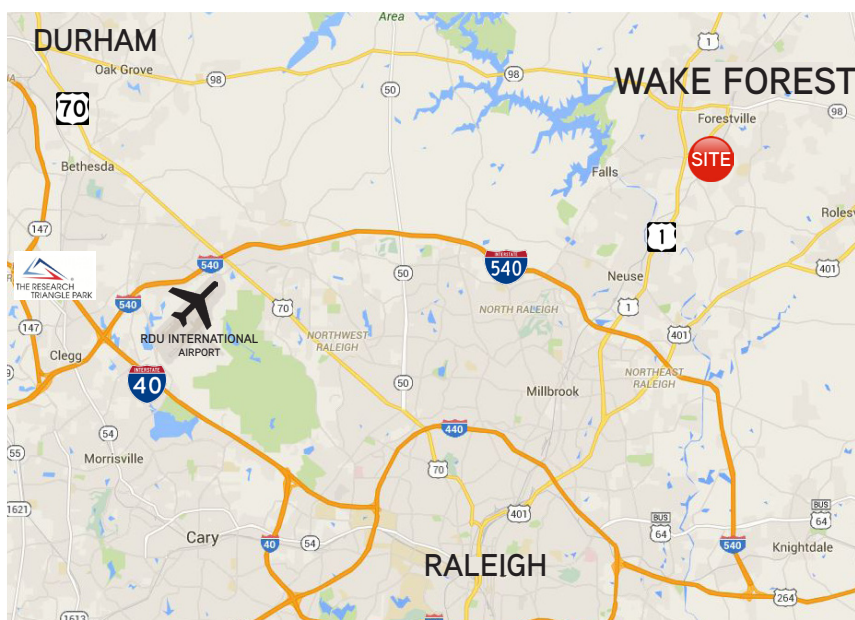
2115 South Main Street | Wake Forest, NC 27587

## PROPERTY DETAILS

Total Building SF	9,500
Available Suite SF	1,680 - 3,360
Lease Type	NNN
Lease Rate	\$18 PSF NNN \$16 PSF NNN
Year built	2000
TICAM	\$3.24
County	Wake

## PROPERTY HIGHLIGHTS

- Two 1,680 square foot suites available for lease.
- New V-box build out, perfect for innovative fitness concepts, retail, service, medical or office.
- Co-Tenants include health, fitness, and beauty.
- Monument signage available.
- Suite D** has exposed high gabled roof, with interior ceiling height of 12' ft throughout the space and peaking at 22'.
- Suite E** is ready for occupancy with stained concrete floors and ample counter space.



## DEMOGRAPHICS

2016	1 Mile	3 Miles	5 Miles
Total Population	6,431	50,013	110,408
Total Households	2,573	17,986	39,374
Avg Household Income	\$90,622	\$102,961	\$98,969

### DAN MCPHILLIPS

Executive Vice President | Retail Services  
919 582 3151  
[dan.mcpPhillips@colliers.com](mailto:dan.mcpPhillips@colliers.com)

### CLAUDIA BORDEAUX

Vice President | Retail Services  
919 582 3103  
[claudia.bordeaux@colliers.com](mailto:claudia.bordeaux@colliers.com)

### COLLIERS INTERNATIONAL

702 Oberlin Road, Suite 400  
Raleigh, NC 27605  
919 832 1110  
[www.colliers.com/rdu](http://www.colliers.com/rdu)





## RETAIL MAP

> Click on the map below for an interactive tour



## SITE PLAN



DISCLAIMER: No warranty or representation, express or implied, is made to the accuracy of the information contained herein, and same is submitted subject to errors, omissions, change of price, rental or other conditions, withdrawal without notice, and to any special listing conditions imposed by principals.

## LOCATION

- > Property is located at a signalized intersection across from Walmart Supercenter and convenient to Capital Boulevard/US 1.
- > Located just 7 miles north of 540, the site is situated between 2 reputable North Raleigh & Wake Forest PUDs—Wakefield Plantation and Heritage.
- > Surrounded by national retailers and restaurants. [Come join your neighbors!](#)

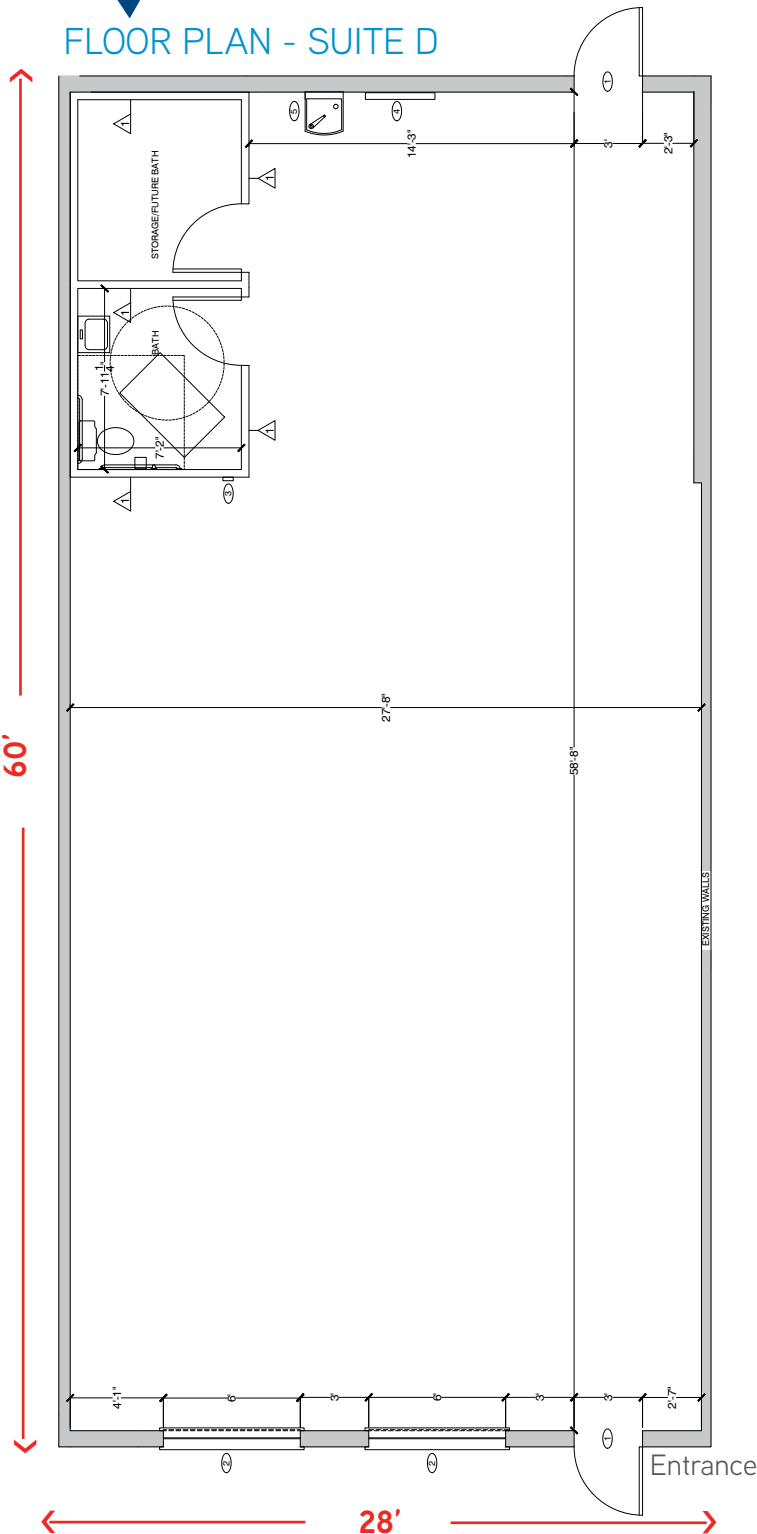




# FOR LEASE: WAKE FOREST PROFESSIONAL CENTER

2115 South Main Street | Wake Forest, NC 27587

## FLOOR PLAN - SUITE D



## INTERIOR PROPERTY PHOTOS



**DAN MCPHILLIPS**

Executive Vice President | Retail Services

919 582 3151

[dan.mcphillips@colliers.com](mailto:dan.mcphillips@colliers.com)

**CLAUDIA BORDEAUX**

Vice President | Retail Services

919 582 3103

[claudia.bordeaux@colliers.com](mailto:claudia.bordeaux@colliers.com)

**COLLIERS INTERNATIONAL**

702 Oberlin Road, Suite 400

Raleigh, NC 27605

919 832 1110

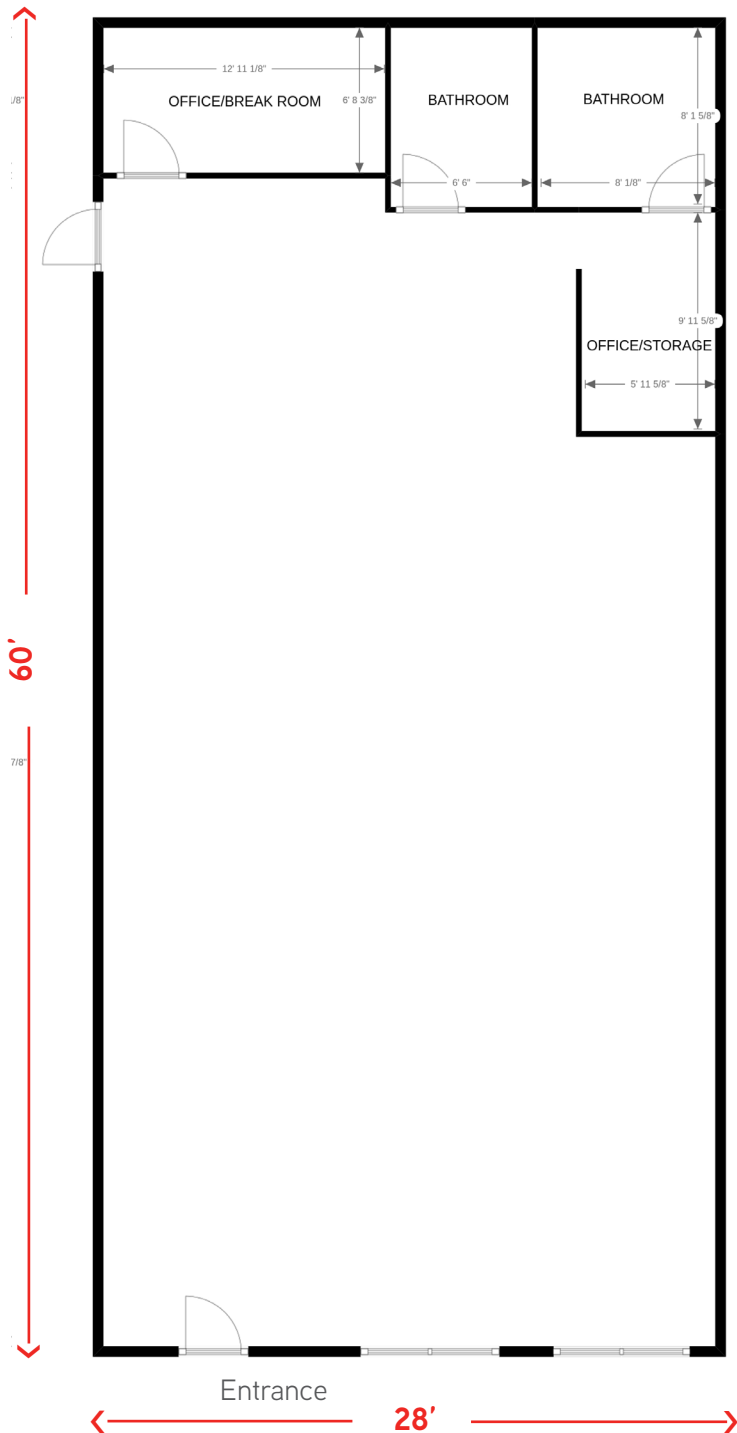
[www.colliers.com/rdu](http://www.colliers.com/rdu)



# FOR LEASE: WAKE FOREST PROFESSIONAL CENTER

2115 South Main Street | Wake Forest, NC 27587

## FLOOR PLAN - SUITE E



## INTERIOR PROPERTY PHOTOS



**DAN MCPHILLIPS**

Executive Vice President | Retail Services

919 582 3151

[dan.mcphillips@colliers.com](mailto:dan.mcphillips@colliers.com)

**CLAUDIA BORDEAUX**

Vice President | Retail Services

919 582 3103

[claudia.bordeaux@colliers.com](mailto:claudia.bordeaux@colliers.com)

**COLLIERS INTERNATIONAL**

702 Oberlin Road, Suite 400

Raleigh, NC 27605

919 832 1110

[www.colliers.com/rdu](http://www.colliers.com/rdu)

