



2,322 SF Available For Lease  
In Woodfield Business Center

## 1000 E. State Pkwy, Unit E Schaumburg, IL

### Property overview

- Building Size: 48,800 SF
- Available: Unit E - 2,332 SF
- Office: 1,522 SF
- Property Type: Industrial/Flex
- Loading Docks: 2 exterior - common
- Drive-in Doors: 1
- Ceiling Height: 14' clear
- Power: 200 amps
- Sprinkler: Fully
- Parking Ratio: 3 per 1,000 SF
- Lease Rate: Subject to offer
- Taxes: \$4.16/SF (2026 estimate)
- Opex: \$2.13/SF (2026 estimate)

### Comments

- Quick access to all major expressways
- High image flex space with excellent loading and parking
- Minutes from restaurants, shopping and amenities

### Contact us:

#### Kelly Joyce, CCIM

Senior Vice President  
+1 847 698 8276  
kelly.joyce@colliers.com

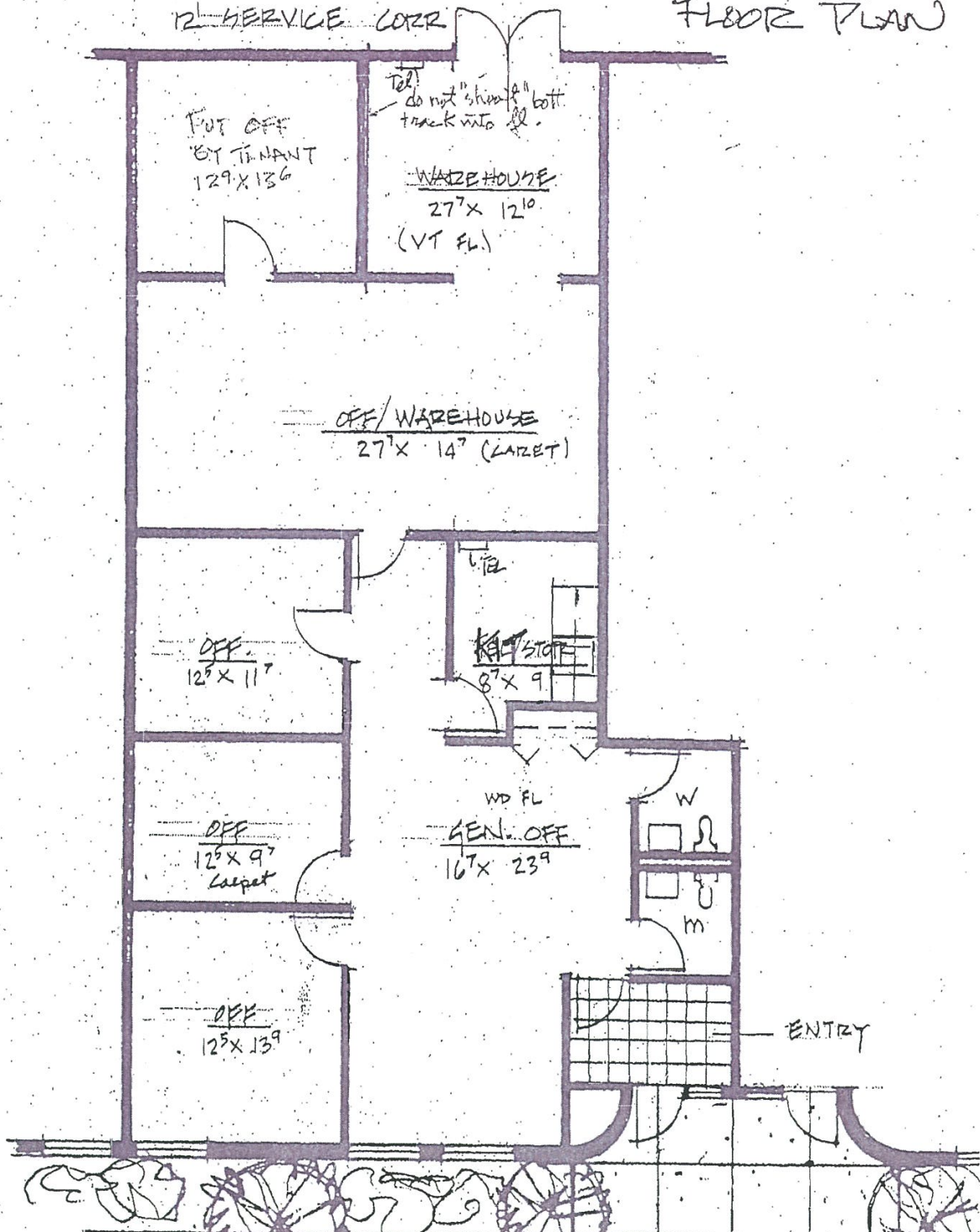


6250 N. River Road, Suite 11-100  
Rosemont, IL 60018  
colliers.com

Copyright © 2026 Colliers International.

Information herein has been obtained from sources deemed reliable, however its accuracy cannot be guaranteed. The user is required to conduct their own due diligence and verification.

## EXHIBIT 16 (FLOOR PLAN)



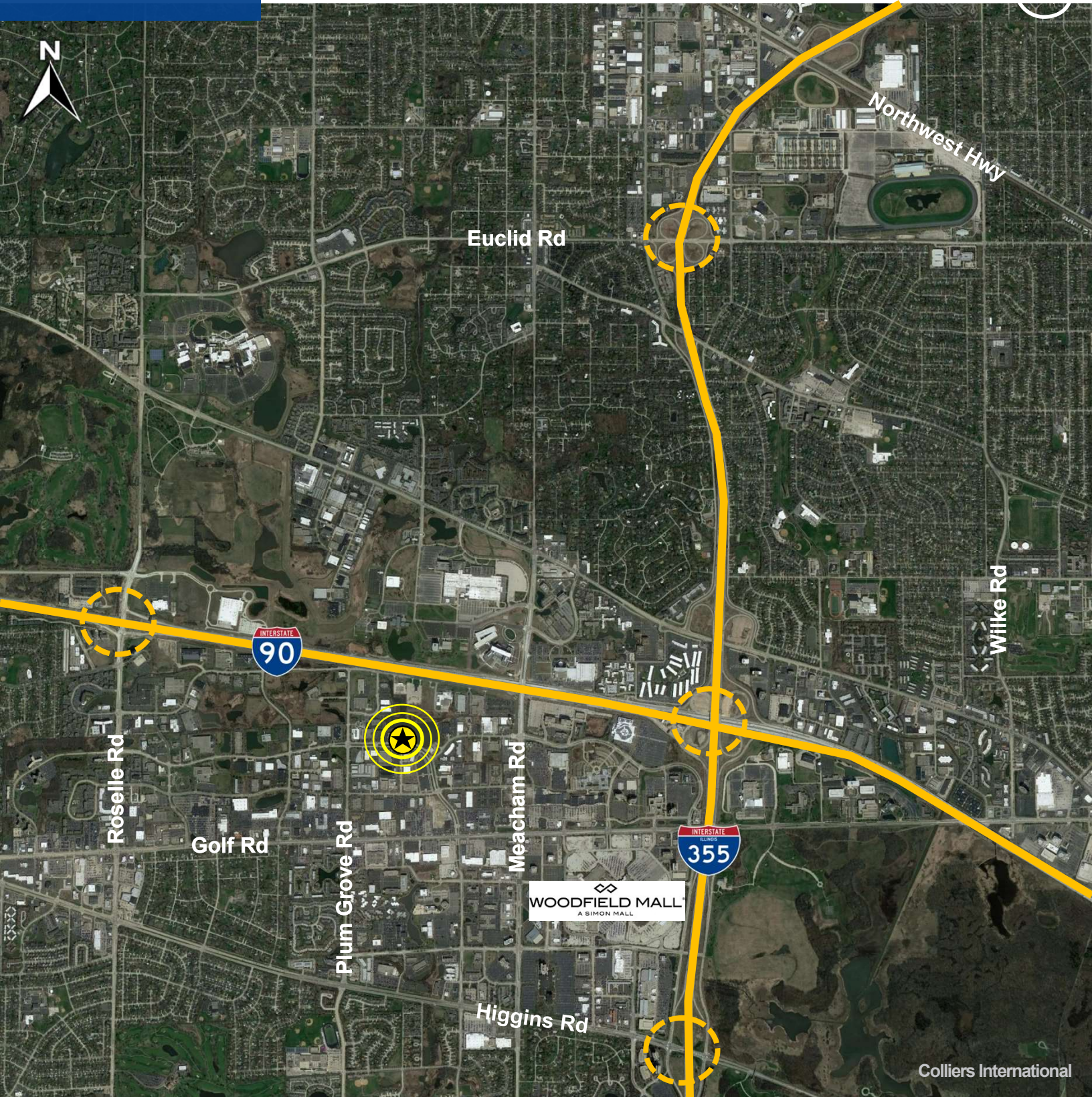
**Kelly Joyce, CCIM**  
Senior Vice President  
+1 847 698 8276  
kelly.joyce@colliers.com

# Building Photos



**Kelly Joyce, CCIM**  
Senior Vice President  
+1 847 698 8276  
[kelly.joyce@colliers.com](mailto:kelly.joyce@colliers.com)

# Aerial



**Kelly Joyce, CCIM**  
Senior Vice President  
+1 847 698 8276  
kelly.joyce@colliers.com