

FOR SALE > LAND



# 900 Southfield Dr

PLAINFIELD, IN



## Property Highlights

- > ±1 acre building pad for sale
- > Property zoned G-C
- > Campus-like feel with Hendricks Regional Health Building, Crane Financial Building & Roland's Golden Memories Senior Living
- > Adjacent to Plainfield linear trail
- > Close to banks, gas stations, supermarket, daycare
- > Visibility from State Road 267
- > Hendricks County is 2nd fastest growing county in Indiana

### DEMOGRAPHICS

	1 Mile	3 Miles	5 Miles
Projected Population – 2017	5,827	30,089	69,279
Population – 2012	5,584	28,196	64,967
Median Age	39.9	36.1	35.1
Households	2,337	10,125	22,801
Average Household Income	\$70,762	\$68,170	\$72,908
Median Household Income	\$54,902	\$54,333	\$58,548
Average Daily Traffic Count			
SR 267	15,770 vehicles per day		

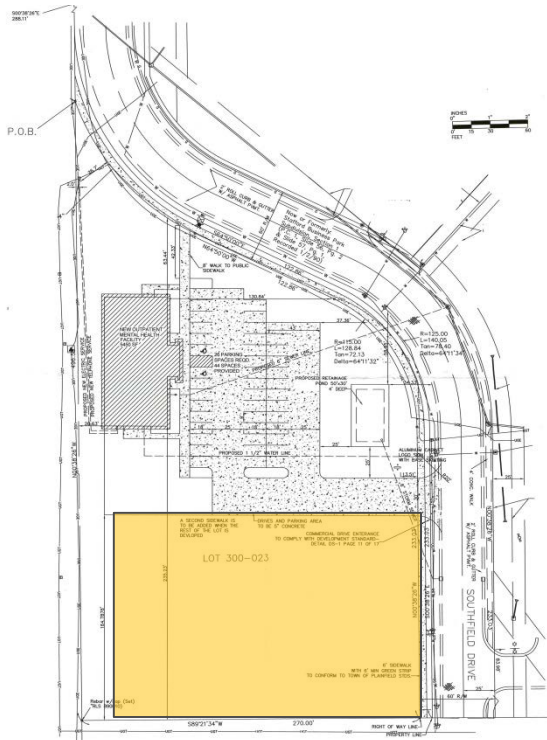
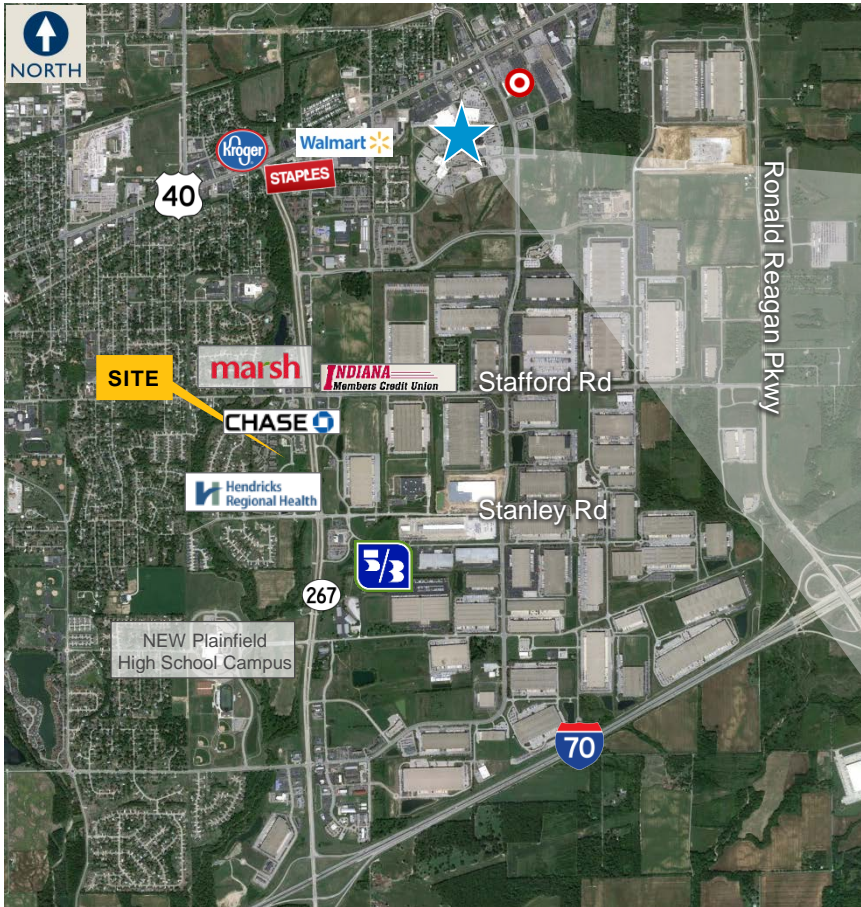
STEPHEN DAUM  
317 713 2144  
stephen.daum@colliers.com

RYAN KELLY  
317 713 2118  
ryan.kelly@colliers.com

COLLIERS INTERNATIONAL  
241 N Pennsylvania St, Suite 300  
Indianapolis, IN 46204  
colliers.com



# Site Plan



## KEY TENANTS



STEPHEN DAUM

317 713 2144

[stephen.daum@colliers.com](mailto:stephen.daum@colliers.com)

RYAN KELLY

317 713 2118

[ryan.kelly@colliers.com](mailto:ryan.kelly@colliers.com)

