

# FOR LEASE > OFFICE SPACE IN SAN FELIPE PLAZA

2001 Mountain Road NW Albuquerque, NM 87104 | Bldg F  
1/2 Mile South of I-40 and Rio Grande Boulevard



## Details

- > Lease Rate: \$1,000/month
- > Lease Type: Modified Gross
- > Available Space: +/- 453 SF
- > Zoning: C-2
- > Lease Term: Short or long term available

## Building Amenities

- > Built with front reception area and separate office
- > Close to Downtown, Museums, Old Town, Hotels and I-40
- > 2 Story Attached Garage with 180 Spaces
- > Co-Tenant: Seasons Grill, Studio SW Architects, First National Rio Grande Bank

## Demographics 2017

	3-mile	5-mile
> Population	98,932	253,144
> Households	40,598	100,962
> Average HH Income	\$64,996	\$61,681



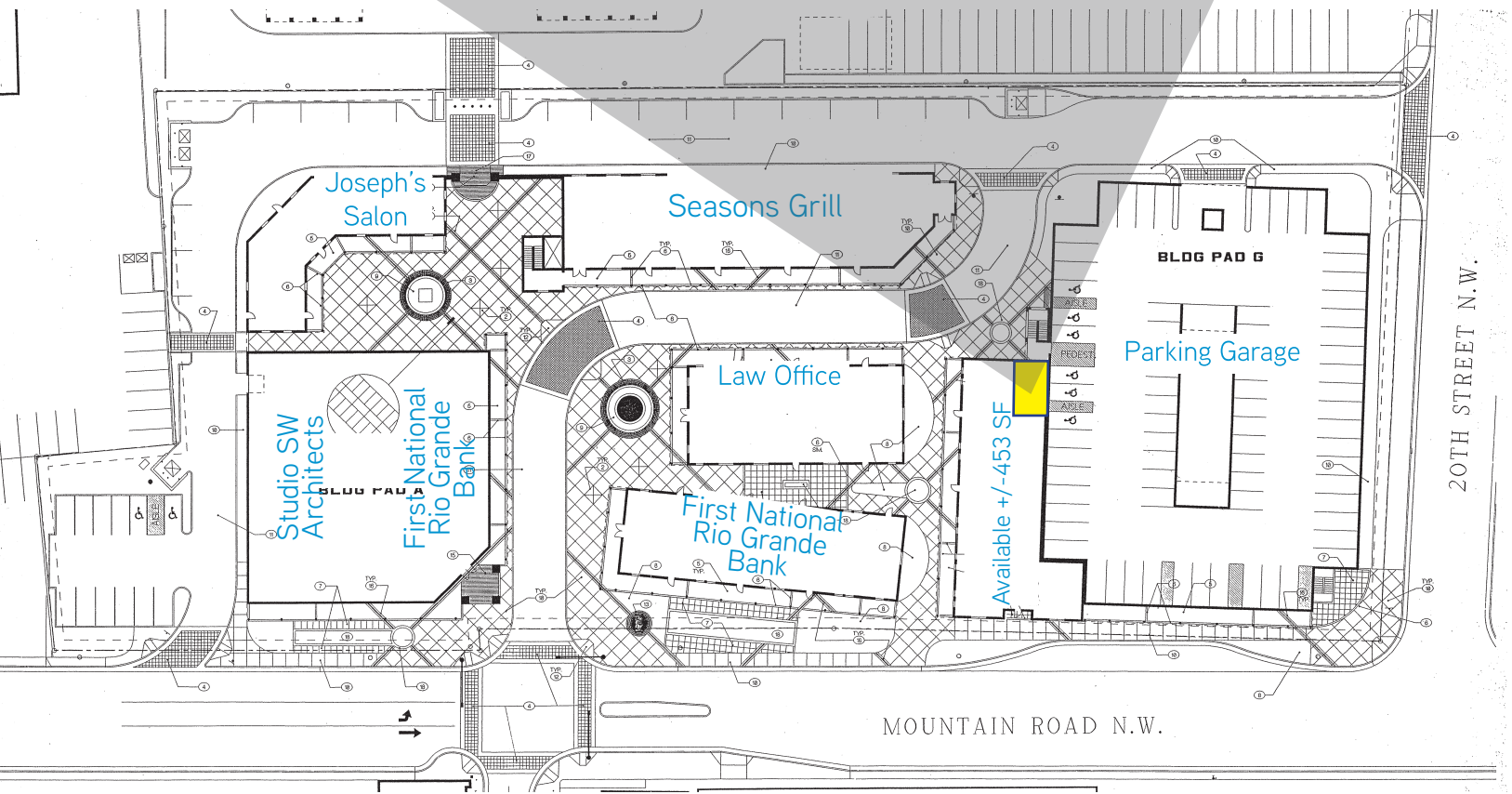
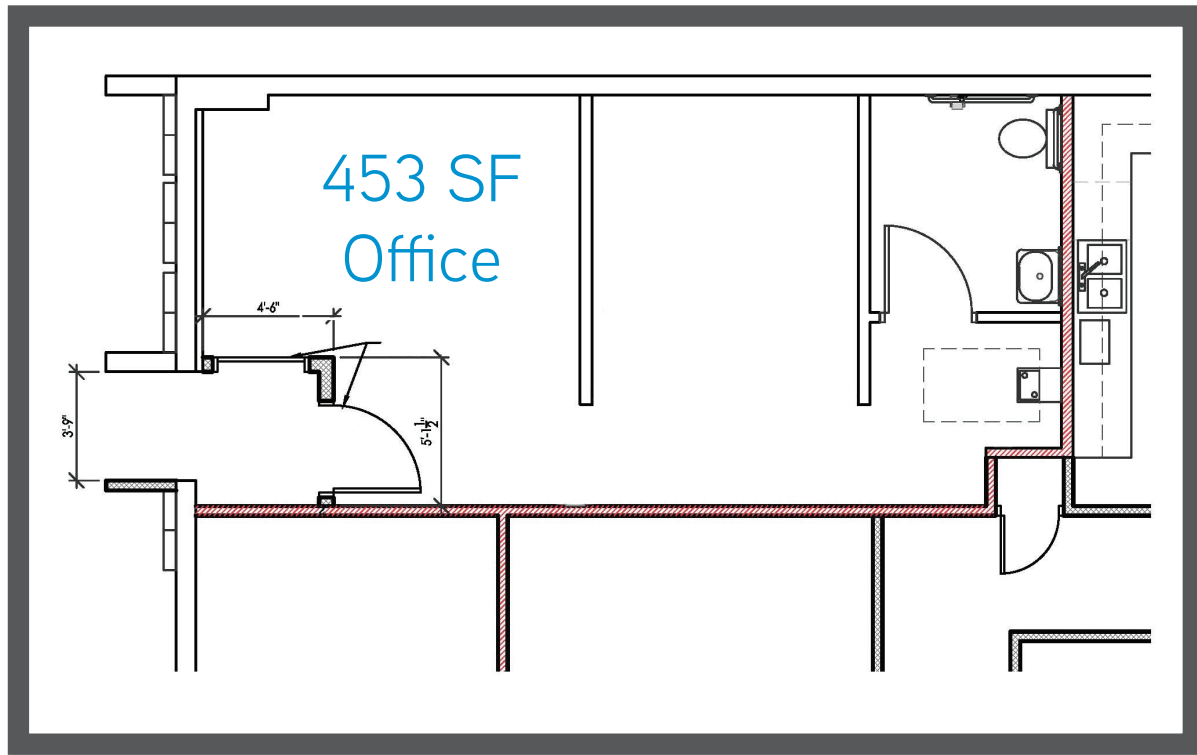
Accelerating success.

**TERRIE HERTWECK, CCIM**  
VICE PRESIDENT  
NM LICENSE #13730  
DIRECT +1 505 880 7022

**COLLIERS INTERNATIONAL**  
5051 Journal Center Blvd NE, Suite 200  
Albuquerque, NM 87109  
MAIN +1 505 880 7055

# FOR LEASE > OFFICE SPACE IN SAN FELIPE PLAZA

2001 Mountain Road NW Albuquerque, NM 87104 | Bldg F  
1/2 Mile South of I-40 and Rio Grande Boulevard





**TERRIE HERTWECK, CCIM**  
VICE PRESIDENT  
NM LICENSE #13730  
DIR +1 505 880 7022  
[terrie.hertweck@colliers.com](mailto:terrie.hertweck@colliers.com)

**COLLIERS INTERNATIONAL**  
5051 Journal Center Blvd NE, Suite 200  
Albuquerque, NM 87109  
MAIN +1 505 880 7055



Accelerating success.