

FOR LEASE ±12,820 SF

Waterman Business Center

Colliers

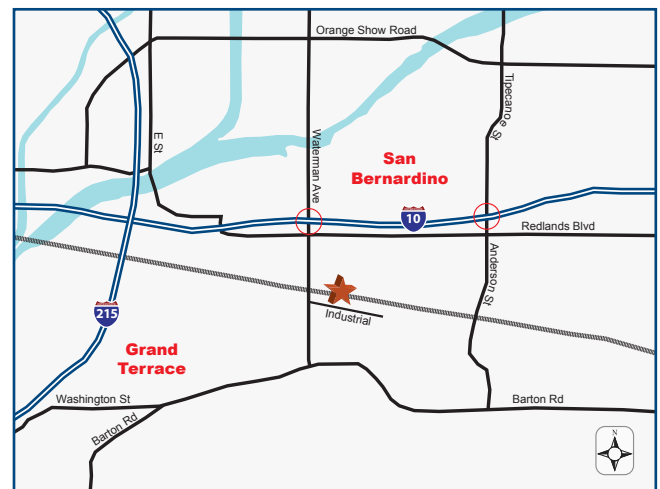
395 E INDUSTRIAL ROAD
SAN BERNARDINO, CA

Now
Asking
\$1.19
mg/psf



Property Highlights

- › High Image Business Park Environment
- › ±2,123 SF Two Story Office Space
- › Two Oversized (14' x 16') Grade Level Truck Doors
- › Fully Sprinklered
- › Possible Fenced Yard
- › Metal Halide Lighting
- › Painted Interior Walls in Warehouse
- › Near Hospitality Lane Amenities
- › Direct Access to 10 & 215 Freeways
- › Located in San Bernardino Valley Enterprise Zone
(Tax Incentives for Qualifying Business)



RICK NUNEZ, SIOR
LICENSE NO. 01235687
+1 909 937 6310
rick.nunez@colliers.com

MATEO MOBILIA
LICENSE NO. 02218220
+1 909 937 6372
mateo.mobilia@colliers.com

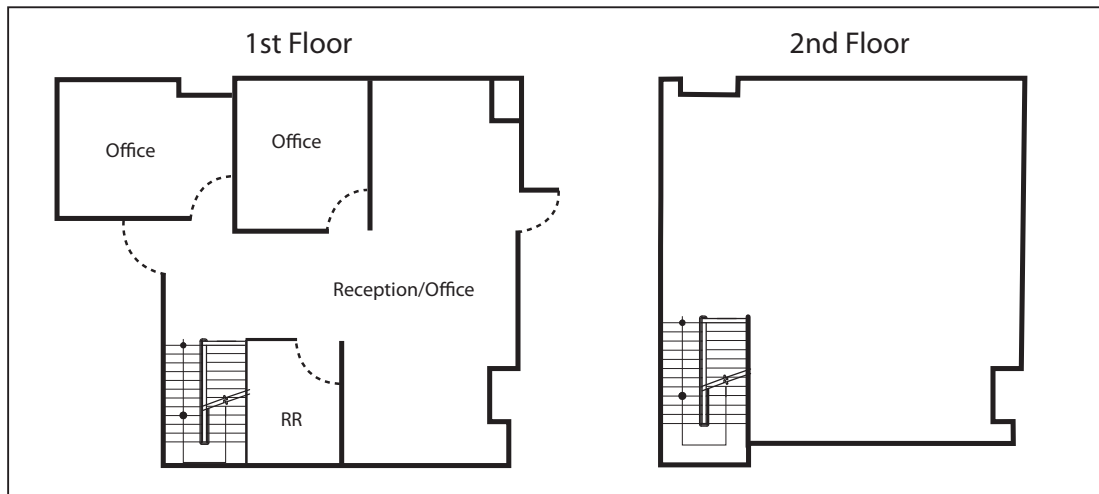
MICHAEL ROMERO
LICENSE NO. 01716426
+1 949 724 5602
michael.romero@colliers.com

FOR LEASE ±12,820 SF

Waterman Business Center



395 E INDUSTRIAL ROAD
SAN BERNARDINO, CA



For more information, please contact:

RICK NUNEZ, SIOR
LICENSE NO. 01235687
+1 909 937 6310
rick.nunez@colliers.com

MATEO MOBILIA
LICENSE NO. 02218220
+1 909 937 6372
mateo.mobilia@colliers.com

MICHAEL ROMERO
LICENSE NO. 01716426
+1 949 724 5602
michael.romero@colliers.com