

FOR LEASE > OFFICE SPACE

Lincoln Place Office Park

3520 - 3564 LINCOLN AVENUE | OGDEN, UT



Property Summary:

Welcome to Lincoln Place...a spacious, well-maintained enclave of office spaces ideally suited as a professional setting for the service industry including Realtors, Insurance Brokers, Chiropractors and Engineers. Most offices feature reception areas, conference rooms and private offices.

Lincoln Place is conveniently situated close to freeways, Downtown Ogden and Riverdale. It is surrounded by ample retailers including Costco, Newgate Mall, quick serve restaurants, convenience stores and much more.

Lincoln Place Amenities:

- > Class B Office Space
- > Zoned PUD Office/Professional
- > Close to Downtown Ogden and Riverdale Retail Area
- > On-site Management
- > On-site Security
- > Ample Parking
- > Convenient Freeway Access
- > Good Lighting at Night
- > Competitive Lease Rates and Flexible Terms
- > Lease Rate Includes Utilities and Janitorial Services
- > Lease Rate: \$12.00 Per Square Foot, Full Service

Don Enlow
+1 801 947 8388
don.enlow@colliers.com

Marcy Pitman
+1 801 947 8330
marcy.pitman@colliers.com

Colliers International
6550 S Millrock Dr | Suite 200
Salt Lake City, UT 84121
P: +1 801 947 8300

FOR LEASE > OFFICE SPACE

Lincoln Place Office Park

3520 - 3564 LINCOLN AVENUE | OGDEN, UT



Don Enlow
+1 801 947 8388
don.enlow@colliers.com

Marcy Pitman
+1 801 947 8330
marcy.pitman@colliers.com

Colliers International
6550 S Millrock Dr | Suite 200
Salt Lake City, UT 84121
P: +1 801 947 8300



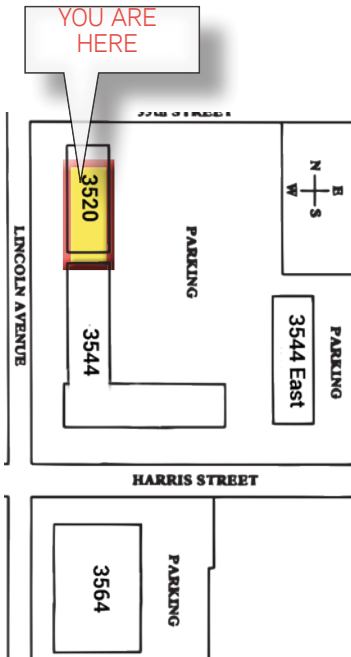
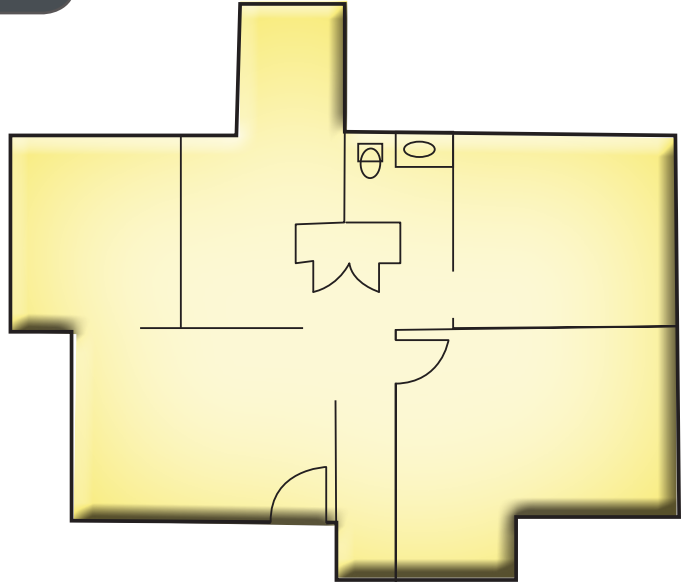
FOR LEASE > OFFICE SPACE

Lincoln Place Office Park

3520 - 3564 LINCOLN AVENUE | OGDEN, UT

3520 LINCOLN AVENUE, SUITE 4

- 1,058 Square Feet
- 4 Private Offices
- Reception Area
- 1 Restroom
- Storage Areas
- Great Views from All Windows
- ADA Accessible



Don Enlow
+1 801 947 8388
don.enlow@colliers.com

Marcy Pitman
+1 801 947 8330
marcy.pitman@colliers.com

Colliers International
6550 S Millrock Dr | Suite 200
Salt Lake City, UT 84121
P: +1 801 947 8300



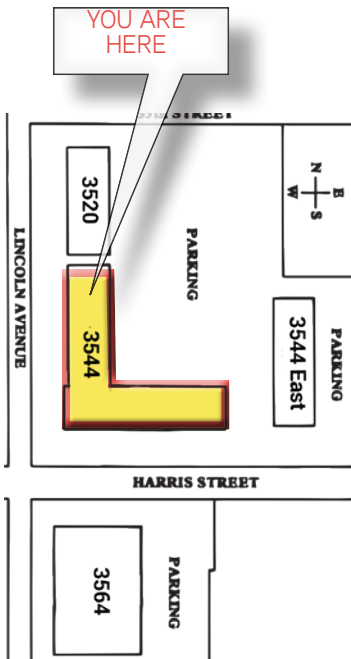
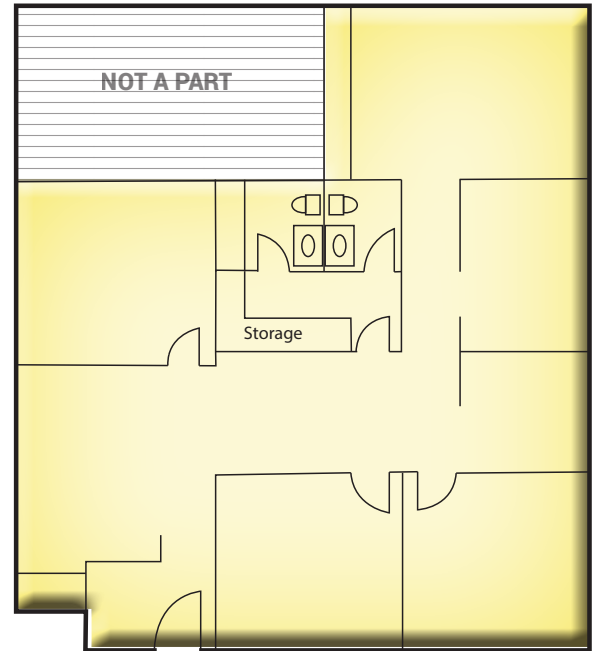
FOR LEASE > OFFICE SPACE

Lincoln Place Office Park

3520 - 3564 LINCOLN AVENUE | OGDEN, UT

3544 EAST LINCOLN AVENUE, SUITE A

- 1,658 Square Feet
- 5 Private Offices
- Reception & Open Area
- Conference Room
- Break Room
- 2 Restrooms
- Great Views from All Windows



Don Enlow
+1 801 947 8388
don.enlow@colliers.com

Marcy Pitman
+1 801 947 8330
marcy.pitman@colliers.com

Colliers International
6550 S Millrock Dr | Suite 200
Salt Lake City, UT 84121
P: +1 801 947 8300



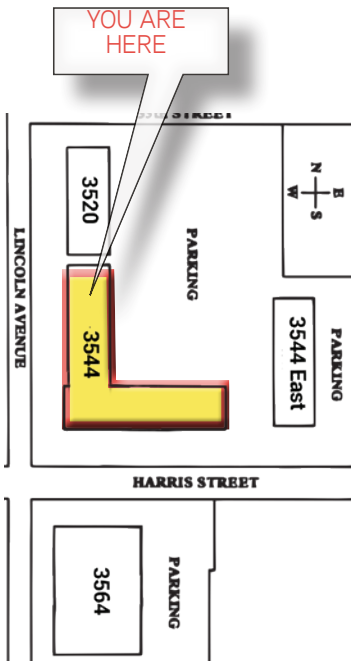
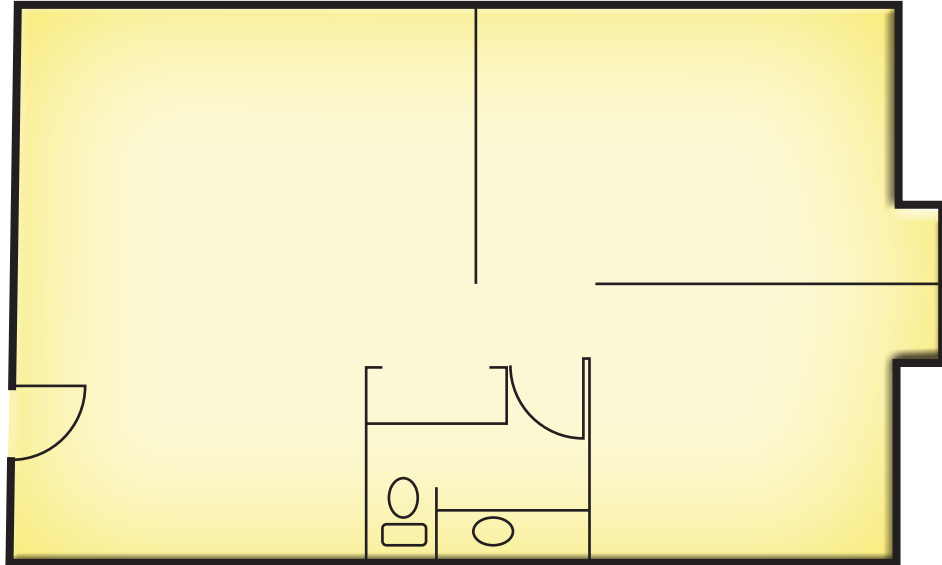
FOR LEASE > OFFICE SPACE

Lincoln Place Office Park

3520 - 3564 LINCOLN AVENUE | OGDEN, UT

3544 EAST LINCOLN AVENUE, SUITE 6

- 990 Square Feet
- 2 Private Offices
- Reception Area / Large Open Area
- Private Restroom
- Storage Closet
- Covered Entry
- Great Views from All Windows



Don Enlow
+1 801 947 8388
don.enlow@colliers.com

Marcy Pitman
+1 801 947 8330
marcy.pitman@colliers.com

Colliers International
6550 S Millrock Dr | Suite 200
Salt Lake City, UT 84121
P: +1 801 947 8300



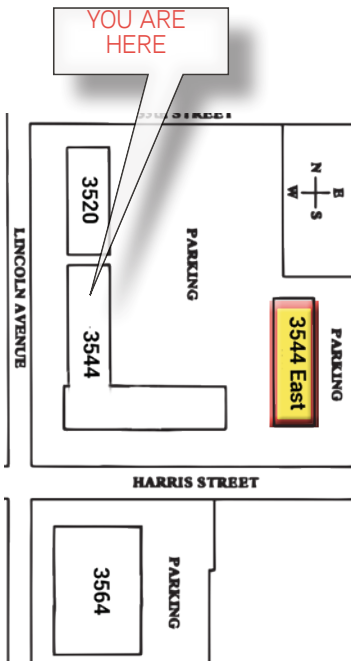
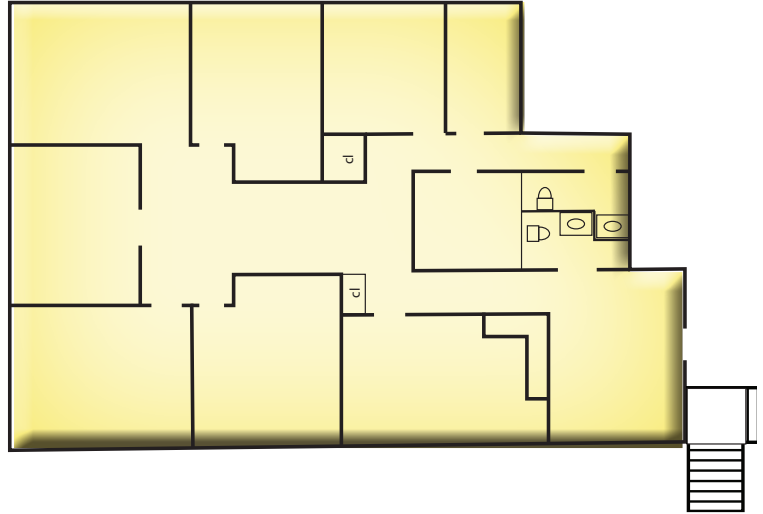
FOR LEASE > OFFICE SPACE

Lincoln Place Office Park

3520 - 3564 LINCOLN AVENUE | OGDEN, UT

3544 EAST LINCOLN AVENUE, SUITE C

- 2,169 Square Feet
- 6 Private Offices
- Reception Area with Service Counter
- Conference Room
- Break Room
- 2 Restrooms
- Storage Room
- Covered Entry
- ADA Accessible
- Great Views from All Windows



Don Enlow
+1 801 947 8388
don.enlow@colliers.com

Marcy Pitman
+1 801 947 8330
marcy.pitman@colliers.com

Colliers International
6550 S Millrock Dr | Suite 200
Salt Lake City, UT 84121
P: +1 801 947 8300



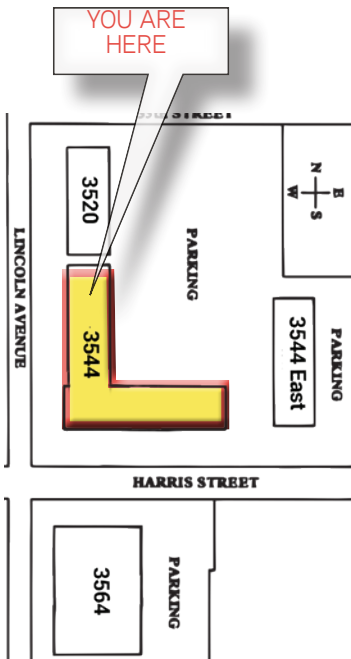
FOR LEASE > OFFICE SPACE

Lincoln Place Office Park

3520 - 3564 LINCOLN AVENUE | OGDEN, UT

3544 LINCOLN AVENUE, SUITE 11

- 4,000 Square Feet
- 4 Private Offices (1 Executive Office)
- Large Open Cube Area
- Conference Room with Glass Surround
- Break Room
- 2 Restrooms
- Storage Area
- Covered Entry
- Great Views from All Windows



Don Enlow
+1 801 947 8388
don.enlow@colliers.com

Marcy Pitman
+1 801 947 8330
marcy.pitman@colliers.com

Colliers International
6550 S Millrock Dr | Suite 200
Salt Lake City, UT 84121
P: +1 801 947 8300



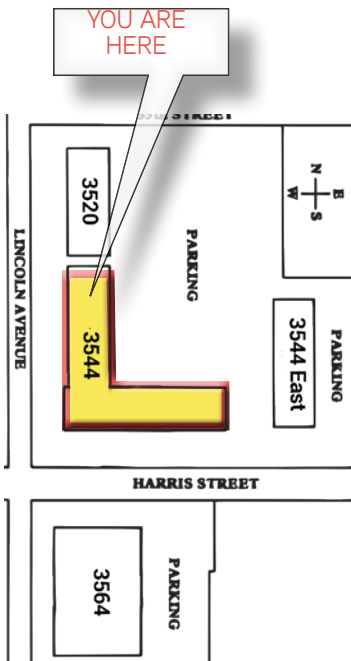
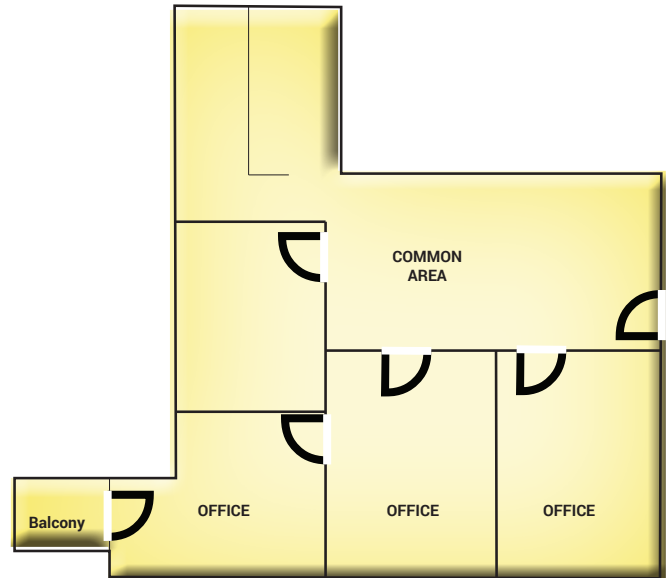
FOR LEASE > OFFICE SPACE

Lincoln Place Office Park

3520 - 3564 LINCOLN AVENUE | OGDEN, UT

3544 LINCOLN AVENUE, SUITE 14AA

- 480 Square Feet
- 2 Private Offices
- Private Balcony
- Common Area Entrance & Restrooms
- Great Views from All Windows



Don Enlow
+1 801 947 8388
don.enlow@colliers.com

Marcy Pitman
+1 801 947 8330
marcy.pitman@colliers.com

Colliers International
6550 S Millrock Dr | Suite 200
Salt Lake City, UT 84121
P: +1 801 947 8300



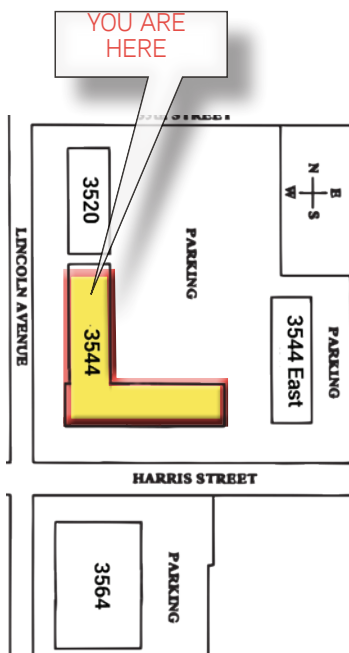
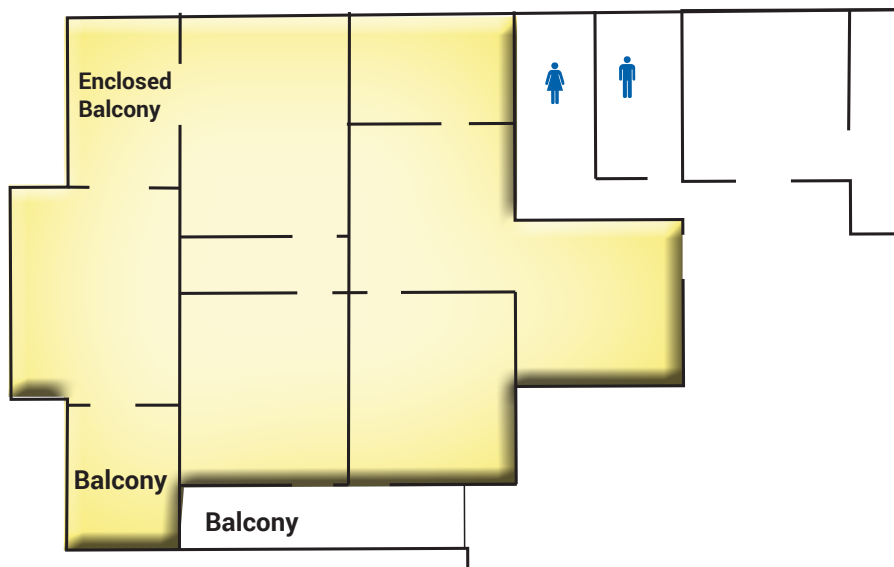
FOR LEASE > OFFICE SPACE

Lincoln Place Office Park

3520 - 3564 LINCOLN AVENUE | OGDEN, UT

3544 LINCOLN AVENUE, SUITE 14C

- 1,462 Square Feet
- 4 Private Offices
- Reception / Open Area
- Conference Room
- Break Room
- Storage Area
- Large Wraparound Balcony
- Common Area Entrance & Restrooms
- Great Views from All Windows
- Ownership Will Remodel to Suit



Don Enlow
+1 801 947 8388
don.enlow@colliers.com

Marcy Pitman
+1 801 947 8330
marcy.pitman@colliers.com

Colliers International
6550 S Millrock Dr | Suite 200
Salt Lake City, UT 84121
P: +1 801 947 8300



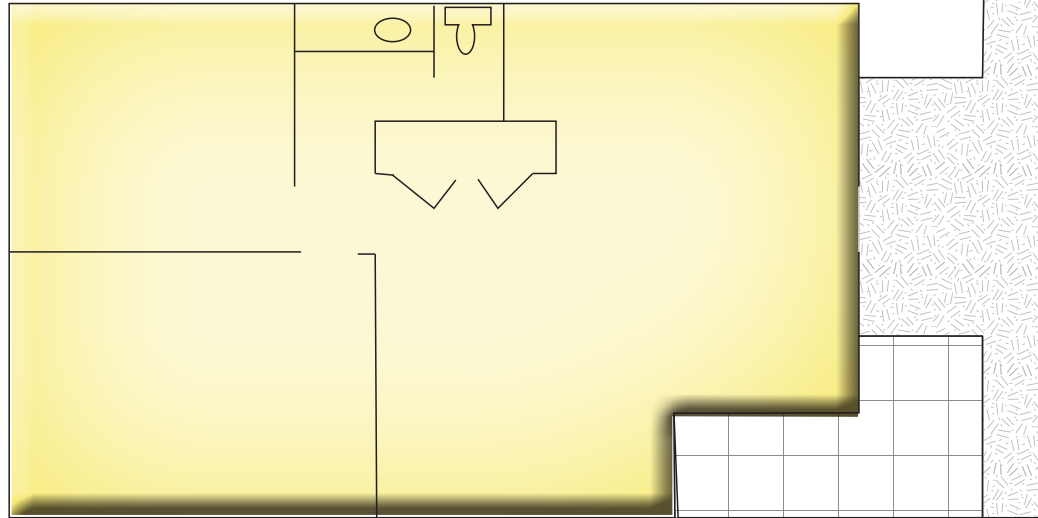
FOR LEASE > OFFICE SPACE

Lincoln Place Office Park

3520 - 3564 LINCOLN AVENUE | OGDEN, UT

3564 LINCOLN AVENUE, SUITE 1

- 1,030 Square Feet
- 2 Private Offices
- Large Reception Area
- Completely Remodeled
- Modern Finishes Throughout
- 1 Restroom
- ADA Accessible
- Great Views from All Windows



Don Enlow
+1 801 947 8388
don.enlow@colliers.com

Marcy Pitman
+1 801 947 8330
marcy.pitman@colliers.com

Colliers International
6550 S Millrock Dr | Suite 200
Salt Lake City, UT 84121
P: +1 801 947 8300



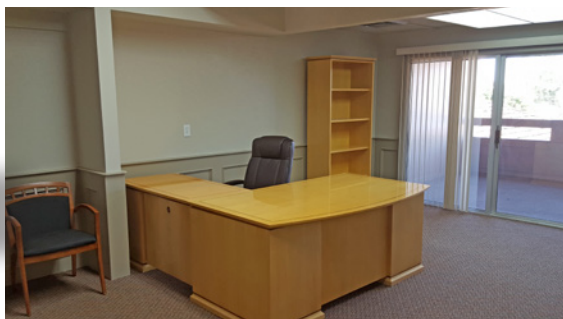
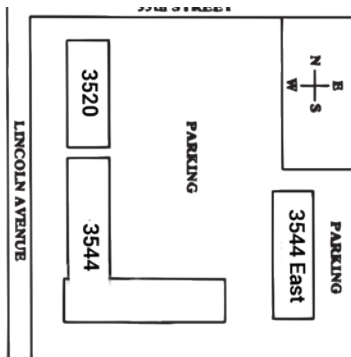
FOR LEASE > OFFICE SPACE

Lincoln Place Office Park

3520 - 3564 LINCOLN AVENUE | OGDEN, UT

3564 LINCOLN AVENUE, SUITE 8

- 2,100 Square Feet
- 4 Private Offices
- Reception Area
- Large Open Area / Conference Room
- Private Covered Balcony
- 2 Restrooms
- Storage Area
- Covered Entry
- Great Views from All Windows
- Furnishings Negotiable



Don Enlow
+1 801 947 8388
don.enlow@colliers.com

Marcy Pitman
+1 801 947 8330
marcy.pitman@colliers.com

Colliers International
6550 S Millrock Dr | Suite 200
Salt Lake City, UT 84121
P: +1 801 947 8300



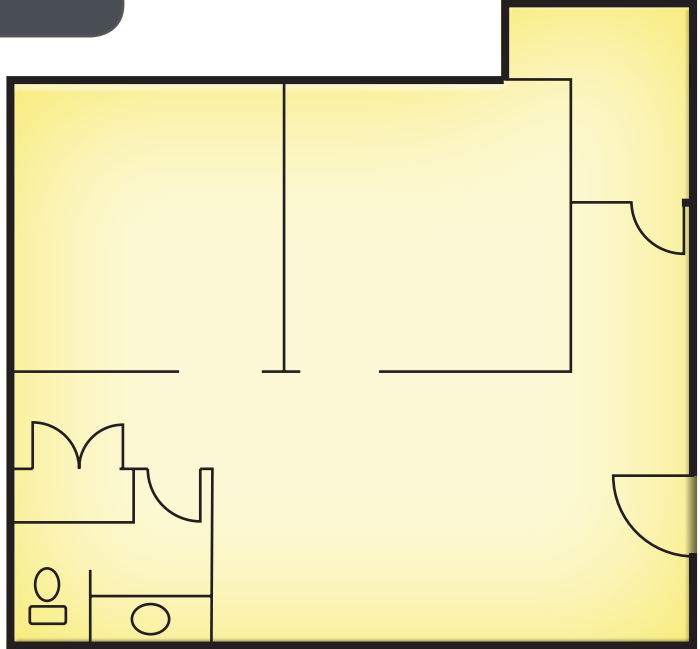
FOR LEASE > OFFICE SPACE

Lincoln Place Office Park

3520 - 3564 LINCOLN AVENUE | OGDEN, UT

3564 LINCOLN AVENUE, SUITE 3A

- 800 Square Feet
- 2 Private Offices
- Reception Area / Large Open Area
- Private Restroom
- Storage Closets
- Covered Entry
- Great Views from All Windows



Don Enlow
+1 801 947 8388
don.enlow@colliers.com

Marcy Pitman
+1 801 947 8330
marcy.pitman@colliers.com

Colliers International
6550 S Millrock Dr | Suite 200
Salt Lake City, UT 84121
P: +1 801 947 8300



FOR LEASE > OFFICE SPACE

Lincoln Place Office Park

3520 - 3564 LINCOLN AVENUE | OGDEN, UT



This document has been prepared by Colliers International for advertising and general information only. Colliers International makes no guarantees, representations or warranties of any kind, expressed or implied, regarding the information including, but not limited to, warranties of content, accuracy and reliability. Any interested party should undertake their own inquiries as to the accuracy of the information. Colliers International excludes unequivocally all inferred or implied terms, conditions and warranties arising out of this document and excludes all liability for loss and damages arising there from. This publication is the copyrighted property of Colliers International and/or its licensor(s). ©2017. All rights reserved.

Colliers International
6550 S Millrock Dr | Suite 200
Salt Lake City, UT 84121
P: +1 801 947 8300

