

FOR LEASE > INDUSTRIAL/FLEX PROPERTY



Northeast Florida

Center Point Business Park

EXECUTIVE PARK CT., JACKSONVILLE, FL 32216

7,500± SF TO 13,200± SF AVAILABLE



Property Features

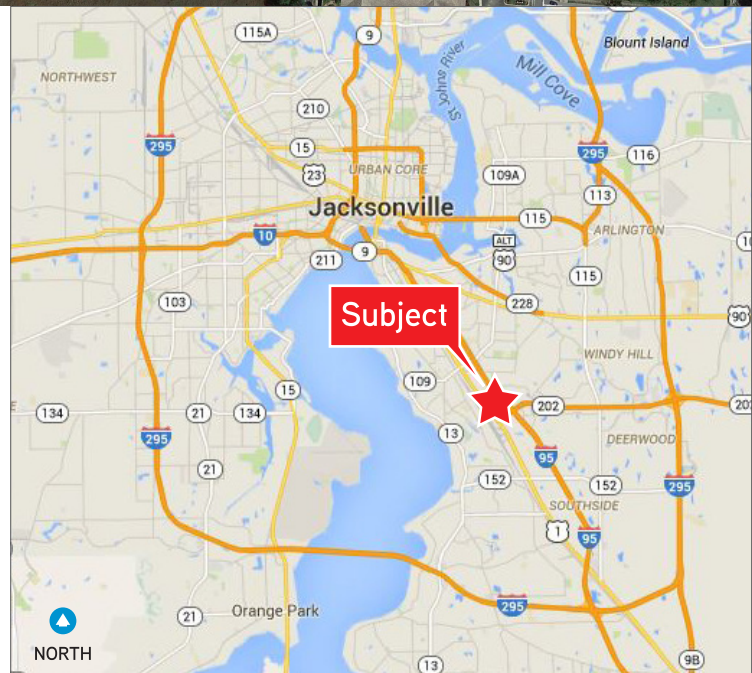
- > High quality business park located between Philips Hwy. and I-95, just 1/4 mile north of J.Turner Butler Blvd.
- > Zoning: IBP
- > Easy access to I-95, I-295, JTB, and Butler/Baymeadows
- > Close proximity to restaurants, banking, hotels and hospital

Available space:

Size:

- | | |
|-------------------------------|------------|
| > Building 4801-200 Suite 203 | 12,000± SF |
| > Building 4810 Suite 107 | 8,198± SF |
| > Building 4815-100 Suite 103 | 13,200± SF |
| > Building 6602-200 Suite 203 | 7,718± SF |
| > Building 6602-200 Suite 207 | 8,000± SF |

Click Here
for Virtual
Tour



SEDA PRESTON
+1 904 358 1206
JACKSONVILLE, FL
5638 seda.preston@colliers.com

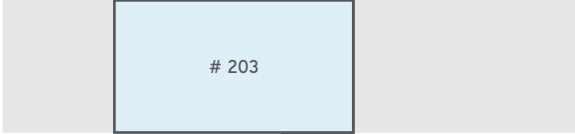
COLLIERS INTERNATIONAL
NORTHEAST FLORIDA
50 N. Laura Street, Suite 1725
Jacksonville, FL 32202
www.colliers.com/jacksonville

Availabilities

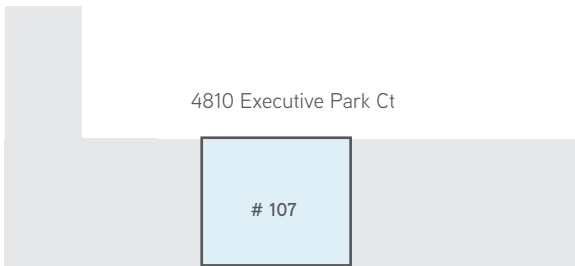


Vacant Leased

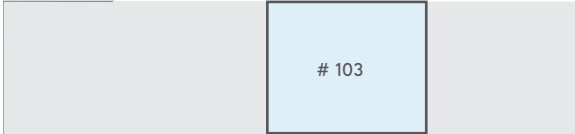
4801-200 Executive Park Ct



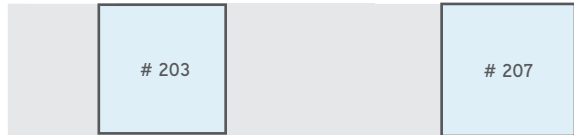
4810 Executive Park Ct



4815-100 Executive Park Ct



6602-200 Executive Park Ct









Building Address	Suite #	Total SF	Office SF	Dimensions	Clear Height	Column Spacing	Truck Court	Loading Doors
4801-200	203	12,000± SF	2,400 ± SF	120' x 100'	18 ft	40 ft	140 ft shared	2 DH 1 Ramp
4810	107	8,198± SF	8,198± SF	68' x 120'	10 ft	n/a	None	ALL OFFICE
4815-100	103	13,200± SF	13,200± SF	110' x 120'	20 ft	n/a	140 ft shared	ALL OFFICE
6602-200	203	7,718± SF	None	80' x 100'	18 ft	40ft	140 ft shared	2 DH Doors
6602-200	207	8,000± SF	3,360± SF	80' x 100'	18 ft	40ft	140 ft shared	1 DH 1 Ramp

Site Plan

EXECUTIVE PARK CT., JACKSONVILLE, FL 32216



-  BUILDINGS
 -  PARKING
 -  POND
 -  CONSERVATION
 -  NOT AVAILABLE
-  NORTH

FOR LEASE > INDUSTRIAL/FLEX PROPERTY

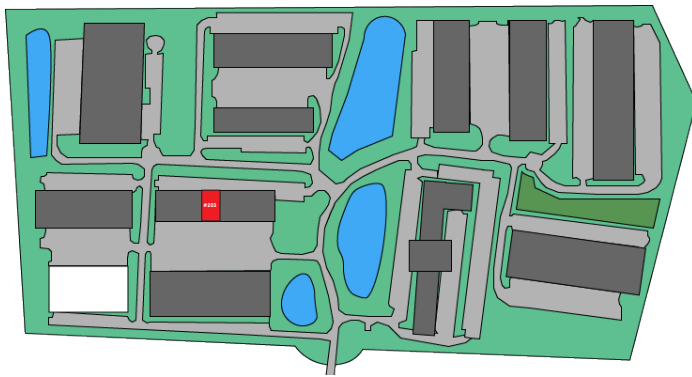
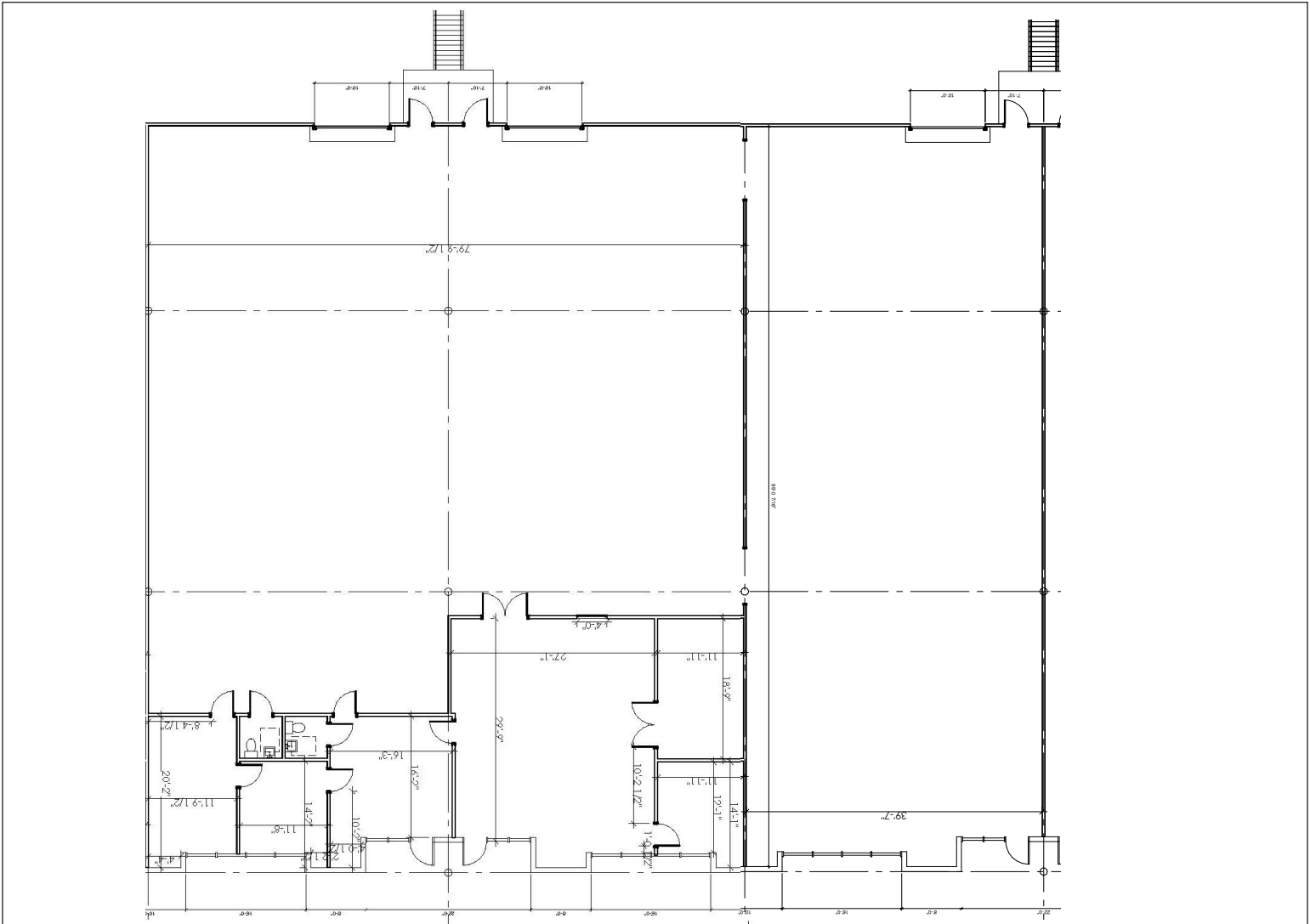
Property Photos

EXECUTIVE PARK CT., JACKSONVILLE, FL 32216



Floor Plan - 4801: Suite 203

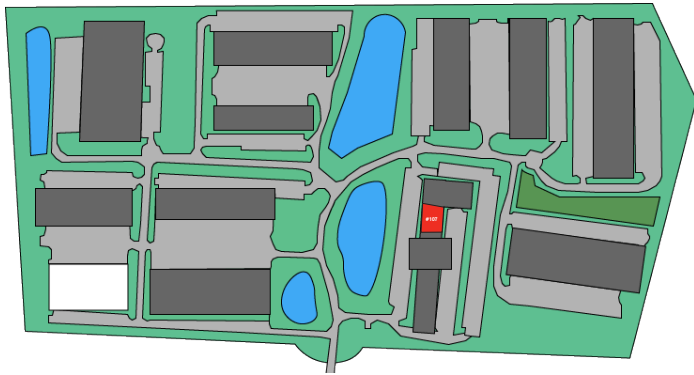
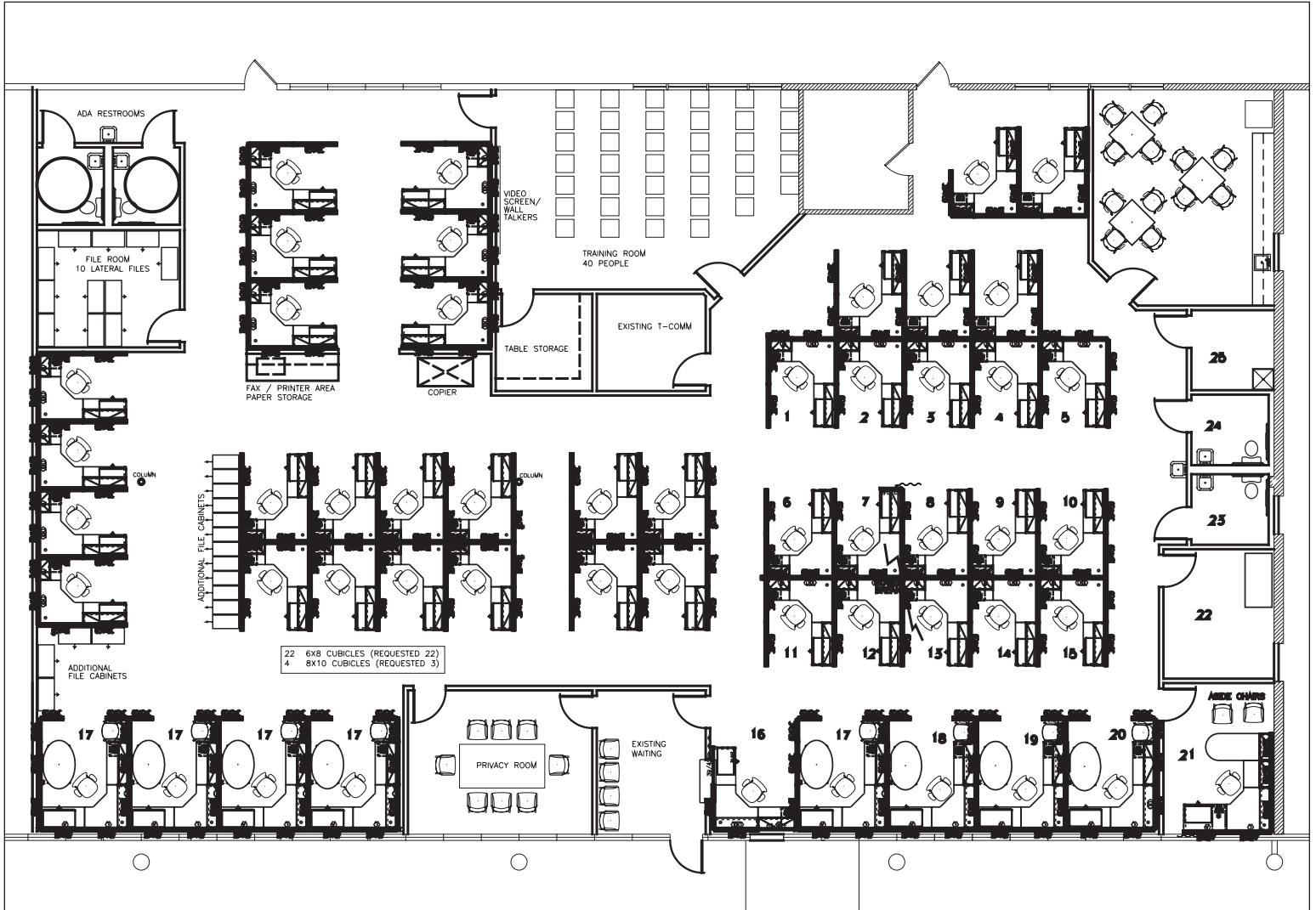
12,000± SF AVAILABLE



Office Space	2,400sf
Dimensions	120' x 100'
Clear Height	18 ft
Loading	3 DH
Electrical	300 amp, 208/120v

Floor Plan - 4810: Suite 107

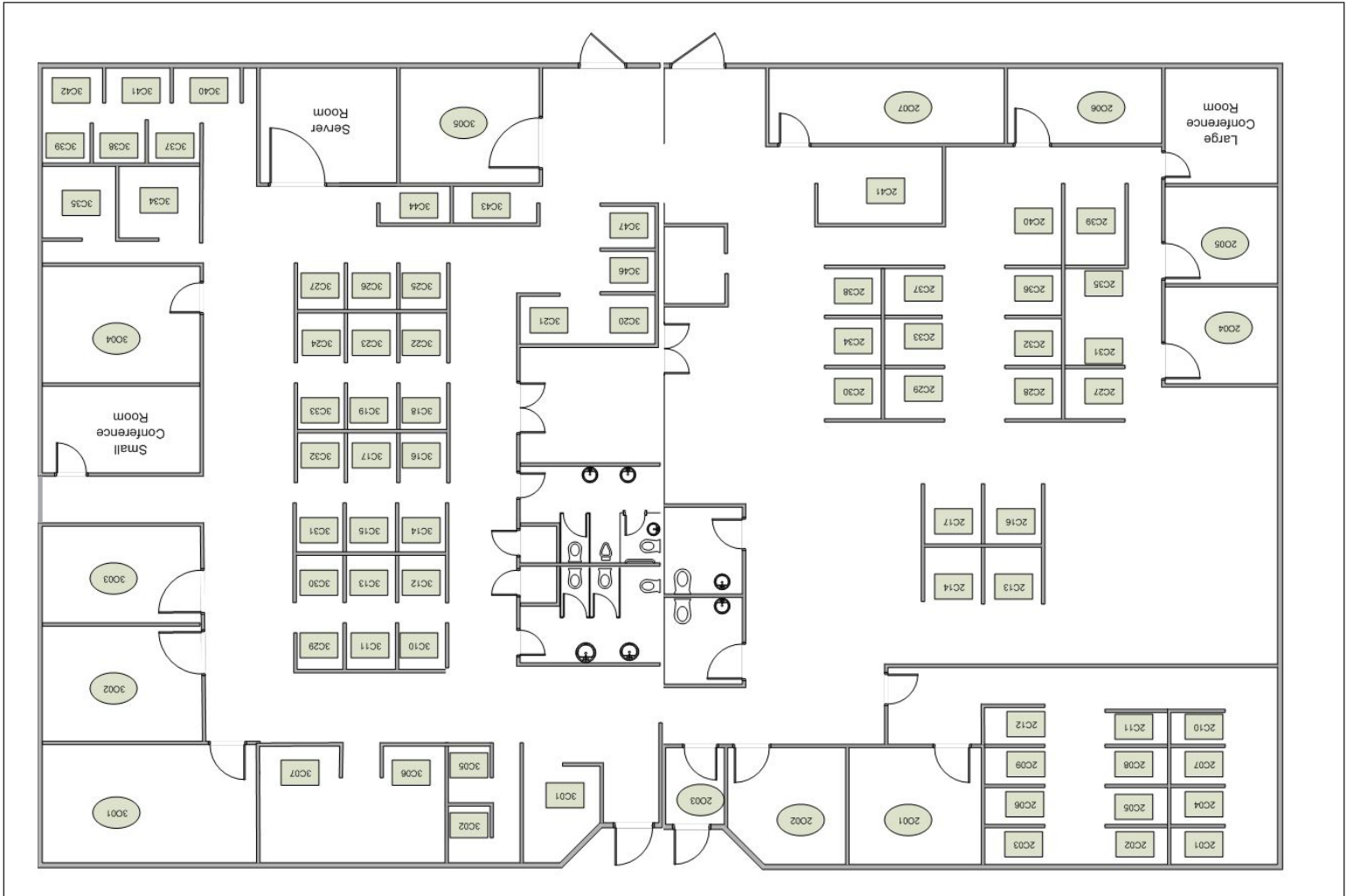
8,198± SF AVAILABLE



Office Area	100%
Clear Height	10 ft
Loading	Grade Level
HVAC	(1) 7.5 -Ton Trane unit
Electrical	200 AMP, 208/120 Volt

Floor Plan - 4815: Suite 103

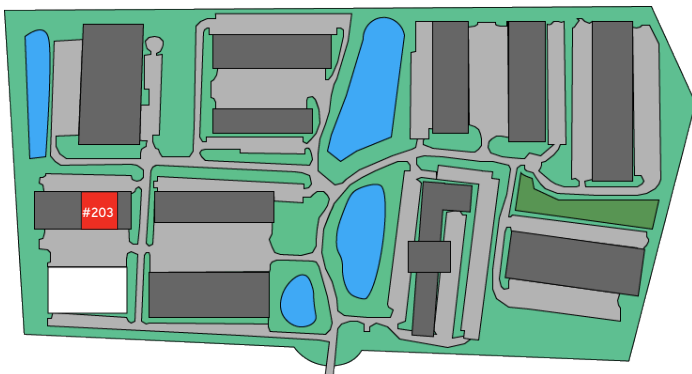
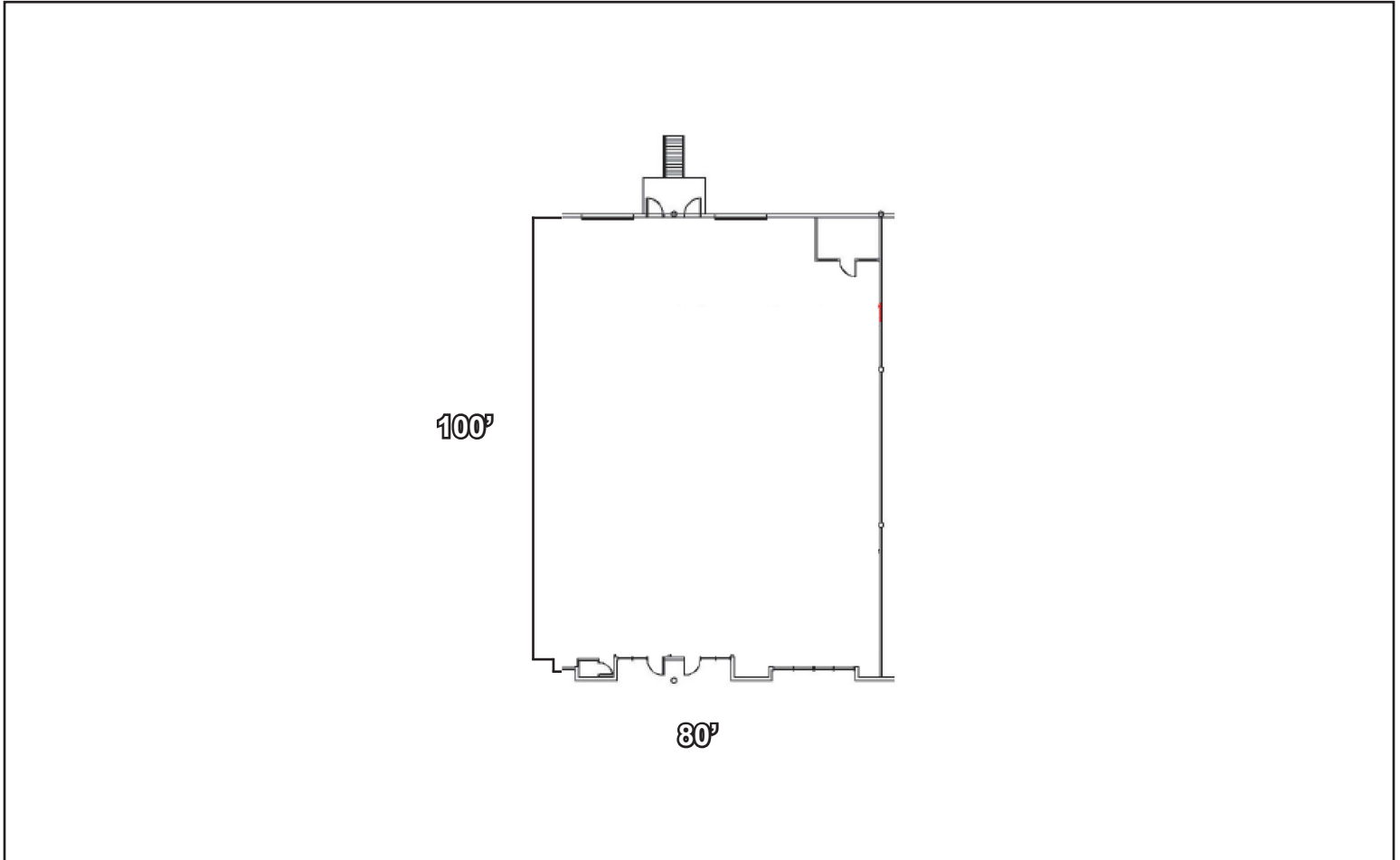
13,200± SF AVAILABLE



Office Area	13,200± SF
Dimensions	110' x 120'
Column Space	N/A
Loading	N/A
Truck Court	140' (shared)

Floor Plan - 6602: Suite 203

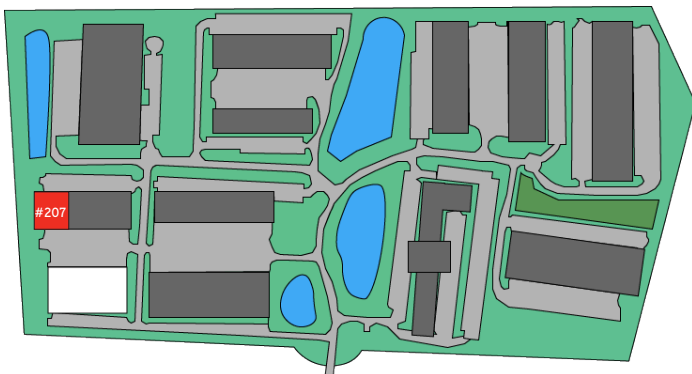
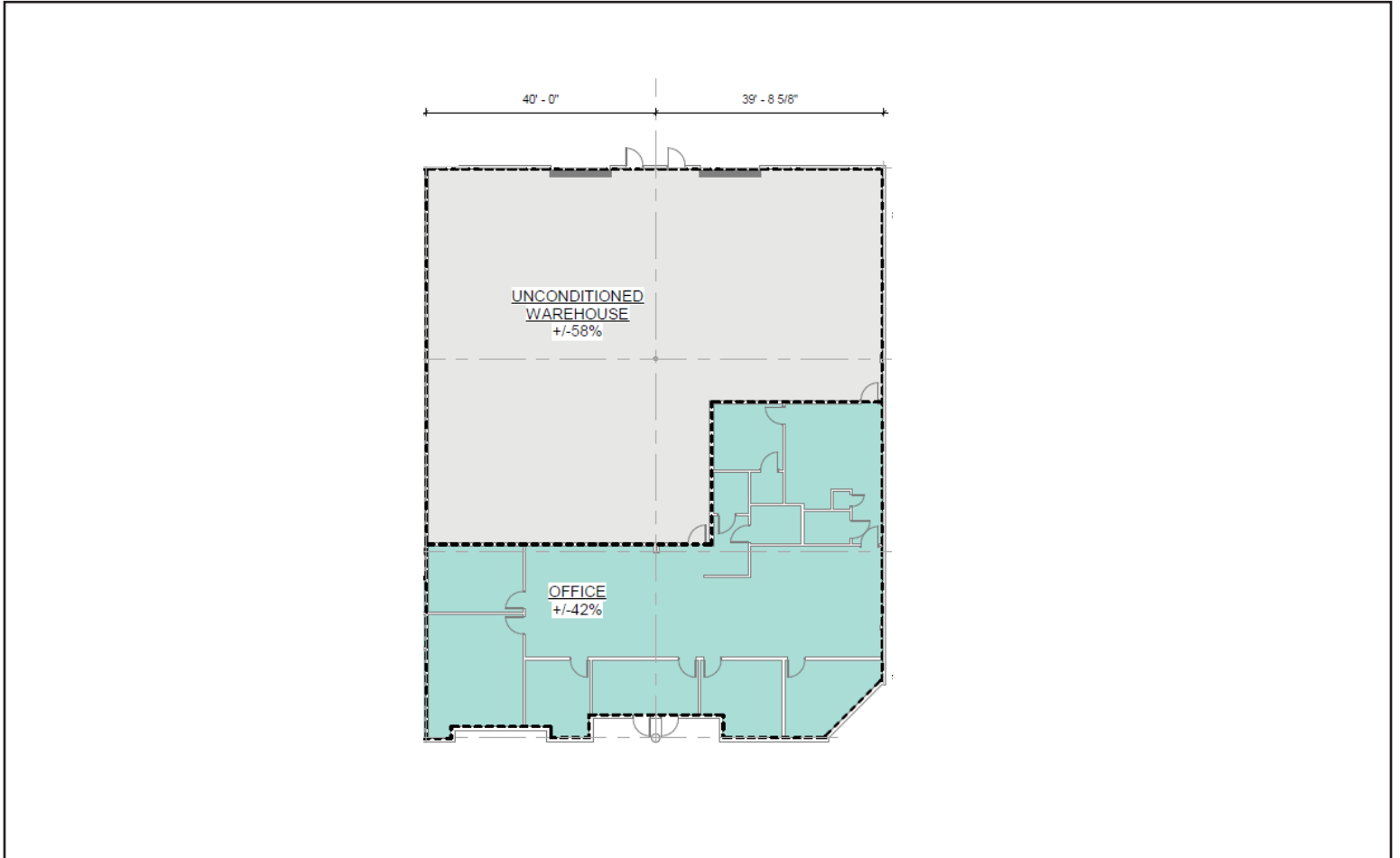
7,718± SF AVAILABLE



Dimensions	80' wide x 100' deep
Clear Height	18 ft.
Column Space	40 ft.
Loading	2 Dock high doors
Truck Court	140 ft shared
Electrical	200 AMP, 3 Phase

Floor Plan - 6602: Suite 207

8,000± SF AVAILABLE



Dimensions	80' wide x 100' deep
Clear Height	18 ft.
Column Space	40 ft.
Loading	1 DH 1 Ramp
Truck Court	140 ft shared
Electrical	200 AMP, 3 Phase