

FOR SALE > **THREE (3) INDIVIDUAL COMMERCIAL BUILDINGS**

120, 121 & 125 MINNER AVENUE, BAKERSFIELD, CA



JASON ALEXANDER
SENIOR VICE PRESIDENT I PRINCIPAL
CENTRAL CALIFORNIA
OFFICE PROPERTIES TEAM
LICENSE NUMBER 01360995
661 631 3818
jason.alexander@colliers.com

COLLIERS INTERNATIONAL
10000 Stockdale Highway, Suite 102
Bakersfield, CA 93311
www.colliers.com/bakersfield



FOR SALE > THREE (3) INDIVIDUAL COMMERCIAL BUILDINGS

PROPERTY INFORMATION

120, 121 & 125 MINNER AVENUE, BAKERSFIELD, CA 93308

120, 121 & 125 Minner Avenue is located south of Norris Road and west of Chester Avenue.

HIGHLIGHTS

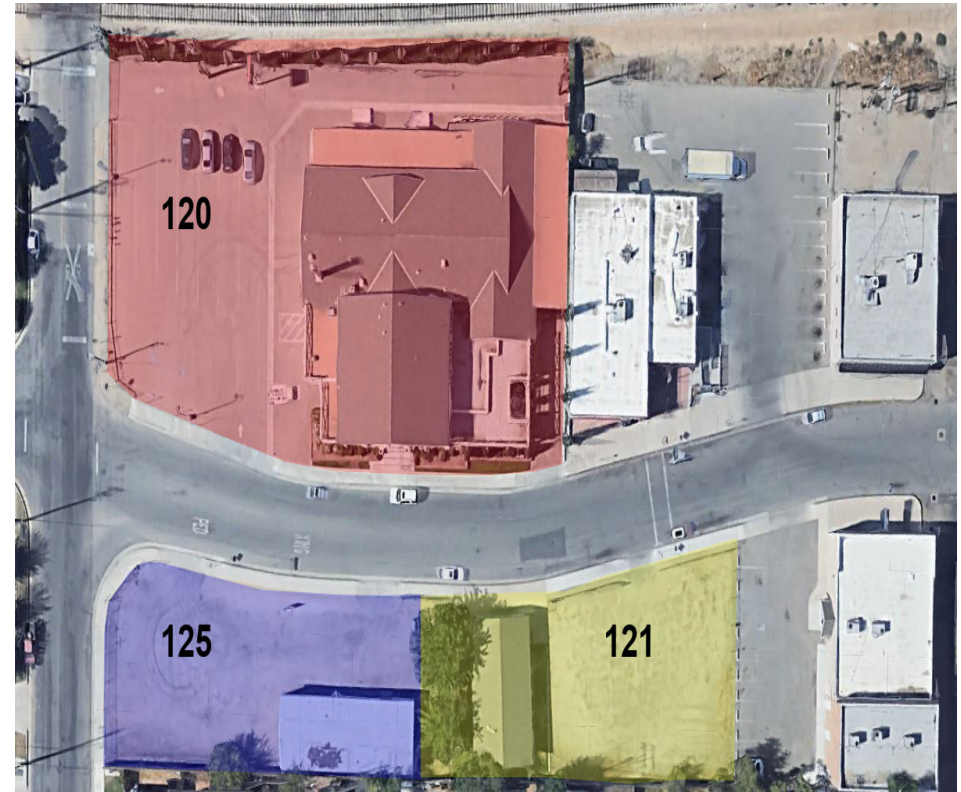
- > Offered for sale are three (3) individual commercial buildings adjacent to each other.
- > Each property has a large parking lot that is fully fenced.
- > Properties are Zoned C-2.
- > Located near the southwest intersection of Norris Road and Chester Avenue
- > 120 Minner Ave is currently used for funeral services but has many other potential uses.
- > All three (3) properties must be purchased together.

AVAILABLE

120 Minner Ave: 13,590 SF on 0.62 Acres
121 Minner Ave: 1,266 SF on 0.24 Acres
125 Minner Ave: 1,750 SF on 0.25 Acres

SALE PRICE

PRICE REDUCED: \$1,199,000 (\$72.20/SF)



CONTACT US

JASON ALEXANDER
SENIOR VICE PRESIDENT | PRINCIPAL
CENTRAL CALIFORNIA
OFFICE PROPERTIES TEAM
LICENSE NUMBER 01360995
661 631 3818
jason.alexander@colliers.com

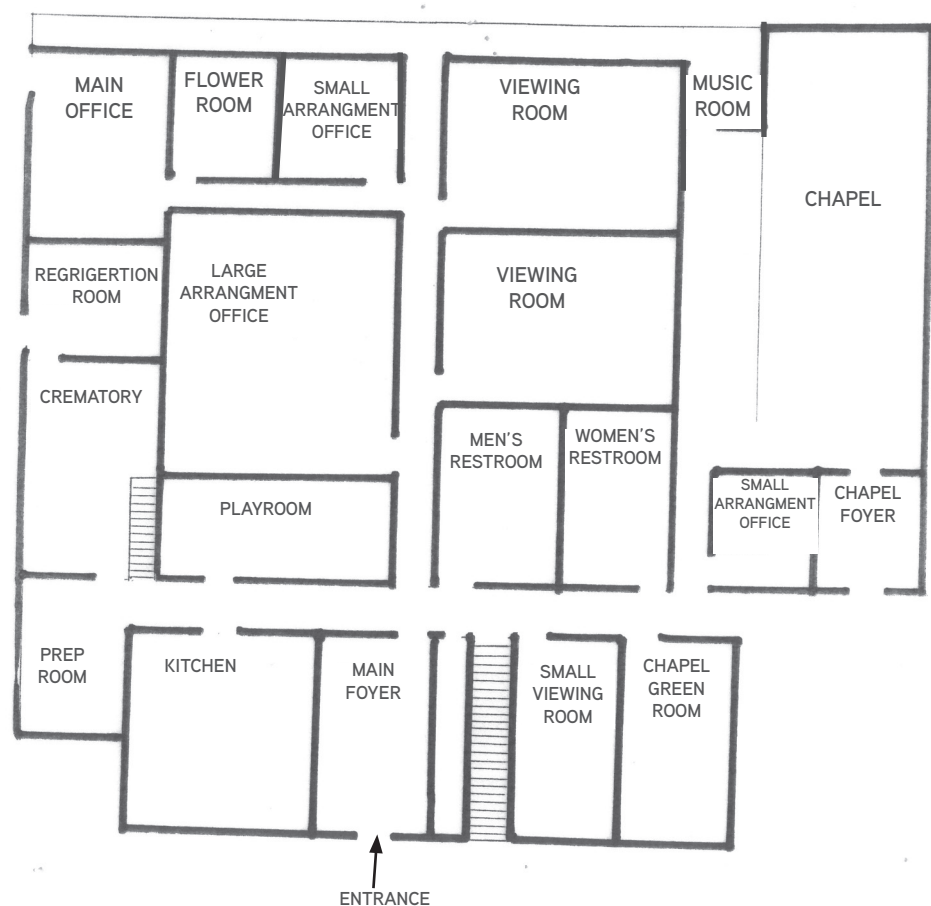


FOR SALE > THREE (3) INDIVIDUAL COMMERCIAL BUILDINGS

FLOOR PLANS

120, 121 & 125 MINNER AVENUE, BAKERSFIELD, CA 93308

120 Minner Avenue is an approximately 13,590 SF two (2) story commercial building situated on 0.62 acres of C-2 zoned land. Also known as Mish Funeral Home, the building is currently used for funeral services but has many other potential uses. The property is located on Minner Avenue, near the southwest intersection of Norris Road and Chester Avenue, and is fully fenced and secured.

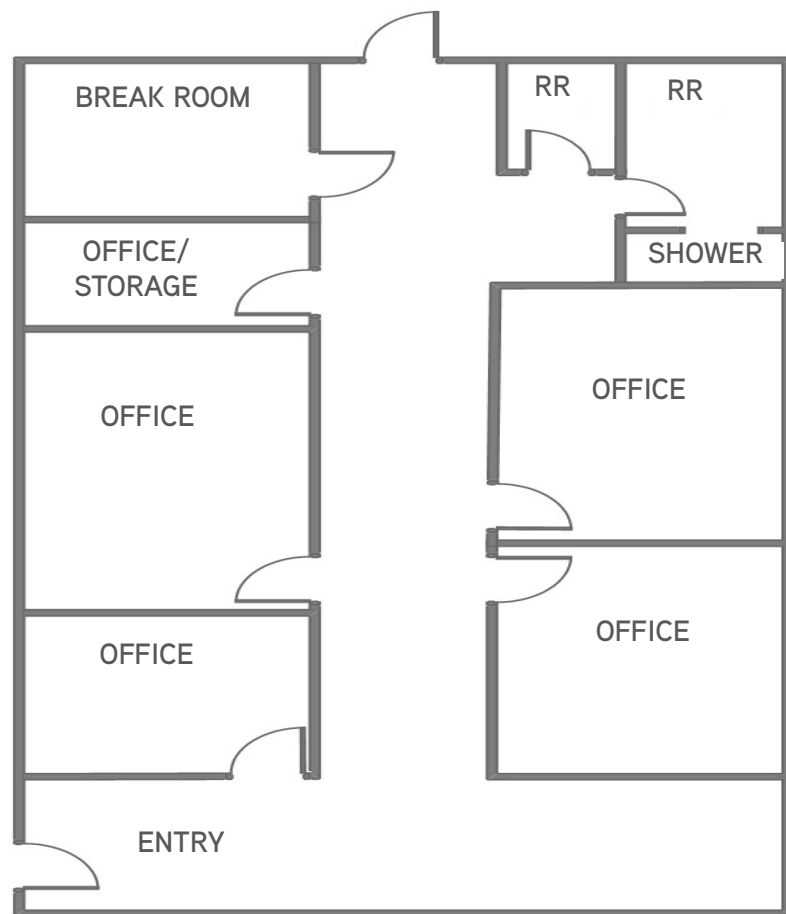


FOR SALE > THREE (3) INDIVIDUAL COMMERCIAL BUILDINGS

FLOOR PLANS

120, 121 & 125 MINNER AVENUE, BAKERSFIELD, CA 93308

121 Minner Avenue is an approximately 1,266 SF general office building situated on 0.24 acres of C-2 zoned land. The property consists of a waiting room, four (4) offices, break room, and two restrooms, in which one has a shower. The property is fully fenced and secured, and in great condition.

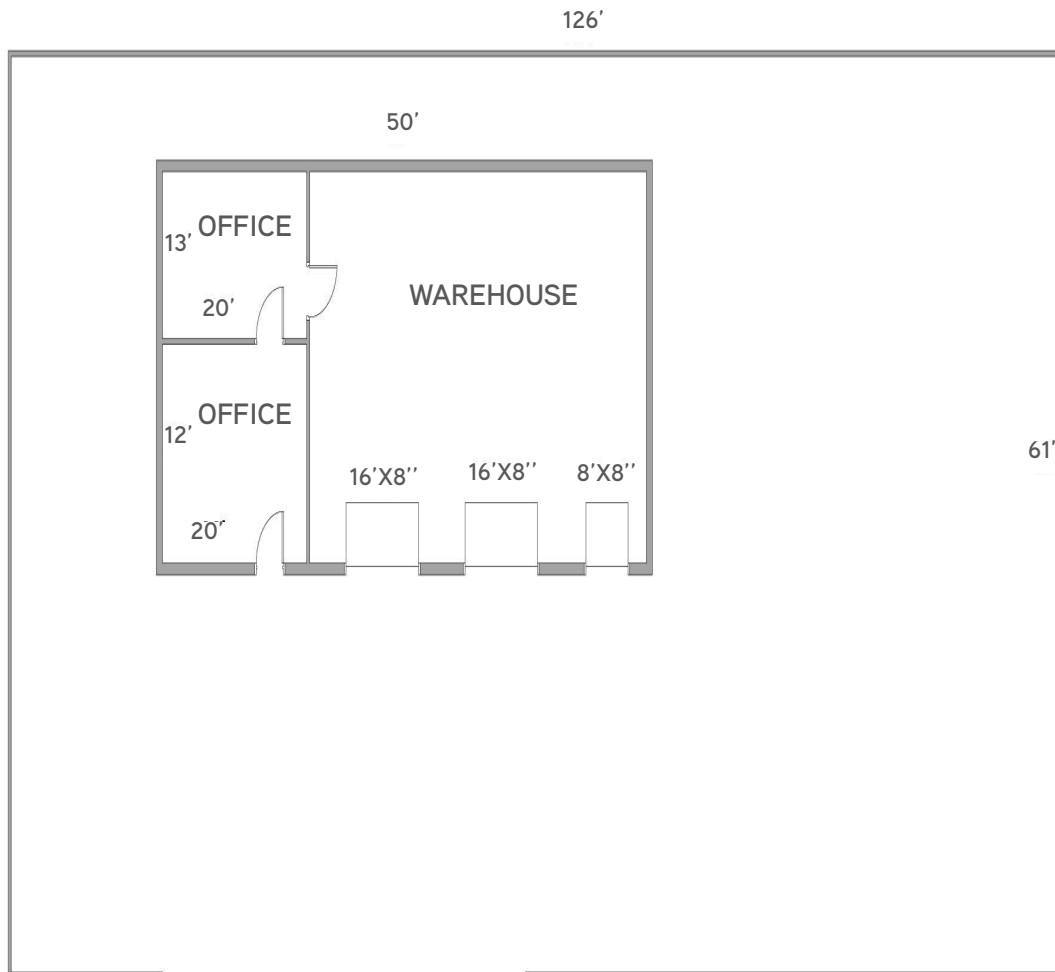


FOR SALE > THREE (3) INDIVIDUAL COMMERCIAL BUILDINGS

FLOOR PLANS

120, 121 & 125 MINNER AVENUE, BAKERSFIELD, CA 93308

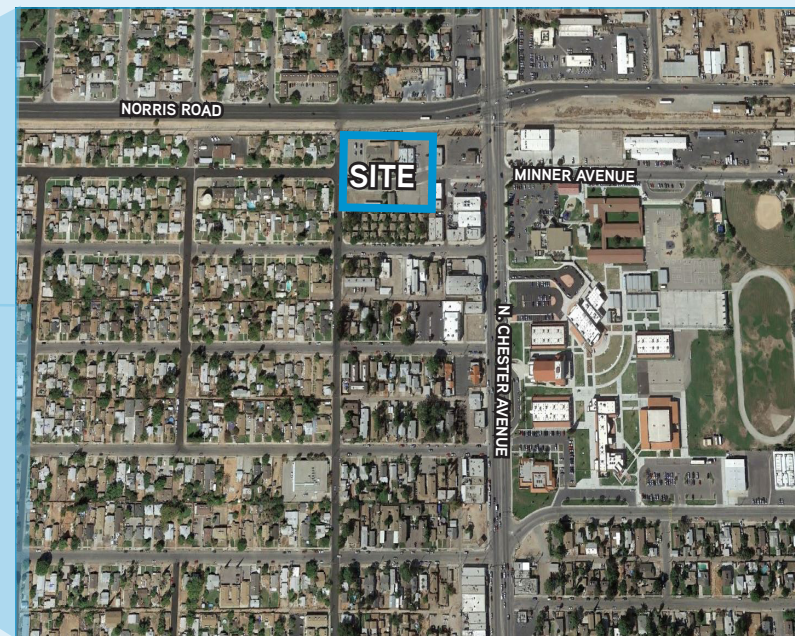
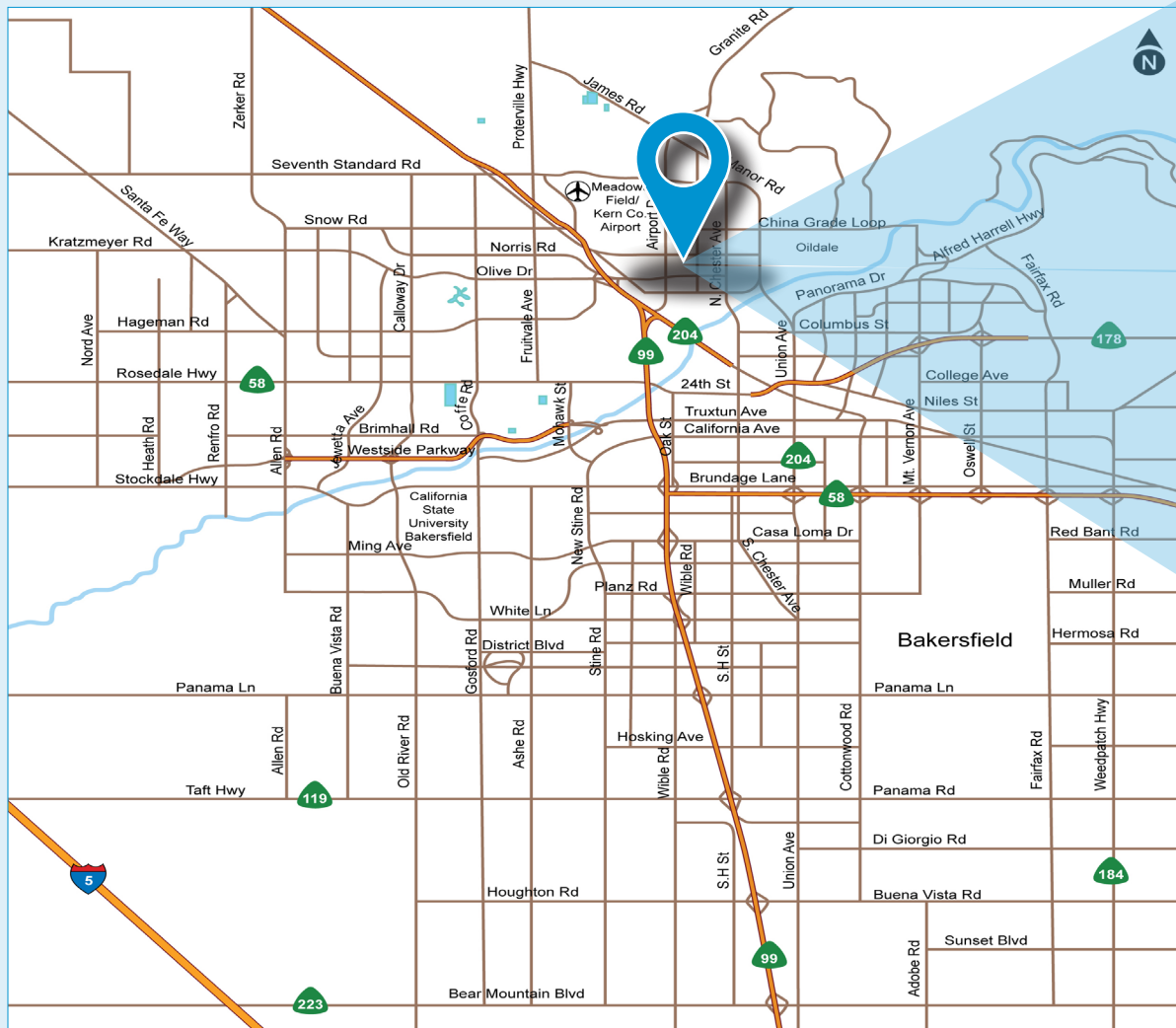
125 Minner Avenue is an approximately 1,750 SF office/warehouse building situated on 0.25 acres of C-2 zoned land. The property consists of two (2) offices, and the remainder warehouse space, with two garage style doors. The property is fully fenced and secured and is in need of some deferred maintenance.



FOR SALE > THREE (3) INDIVIDUAL COMMERCIAL BUILDINGS

LOCATION MAP > AERIAL

120, 121 & 125 MINNER AVENUE, BAKERSFIELD, CA 93308



CONTACT US

JASON ALEXANDER
SENIOR VICE PRESIDENT | PRINCIPAL
CENTRAL CALIFORNIA
OFFICE PROPERTIES TEAM
LICENSE NUMBER 01360995
661 631 3818
jason.alexander@colliers.com

COLLIERS INTERNATIONAL
10000 Stockdale Highway
Suite 102
Bakersfield, CA 93311
www.colliers.com/bakersfield



This document has been prepared by Colliers International for advertising and general information only. Colliers International makes no guarantees, representations or warranties of any kind, expressed or implied, regarding the information including, but not limited to, warranties of content, accuracy and reliability. Any interested party should undertake their own inquiries as to the accuracy of the information. Colliers International excludes unequivocally all inferred or implied terms, conditions and warranties arising out of this document and excludes all liability for loss and damages arising there from. This publication is the copyrighted property of Colliers International and/or its licensor(s). ©2017. All rights reserved.