

# For Lease

901 Kentucky Street, Lawrence, Kansas  
Suites 105 & 305



Accelerating success.

# 901 Kentucky Street

## Property Features

**Year Built:** 1955

**Zoning:** M-3

**Features:** Natural light and hardwood flooring

**Space:** This stylish, 24,858-square foot office building has unique character and charm, and is located in close proximity to Massachusetts Street. The building is equipped with an elevator, free dedicated parking, and fully functional windows. New roof installed in 2024.



## Suite 105



# Floor Plans

Directory Signage



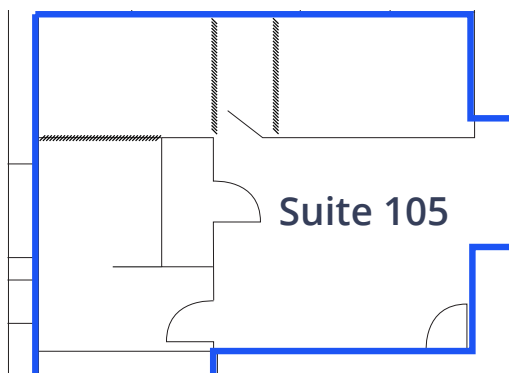
East Entrance



## Suite 105

### Suite Features

- 831 SF
- \$1,350/month, full service
- Corner suite with reception area, beautiful hard-surface floors, small kitchenette, and a large south-facing open office that could be demised into two private offices

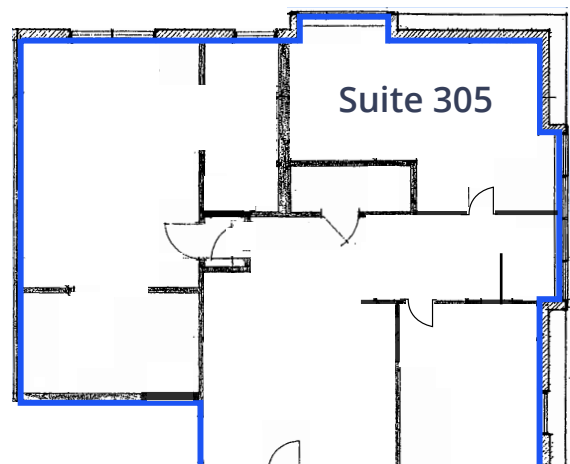


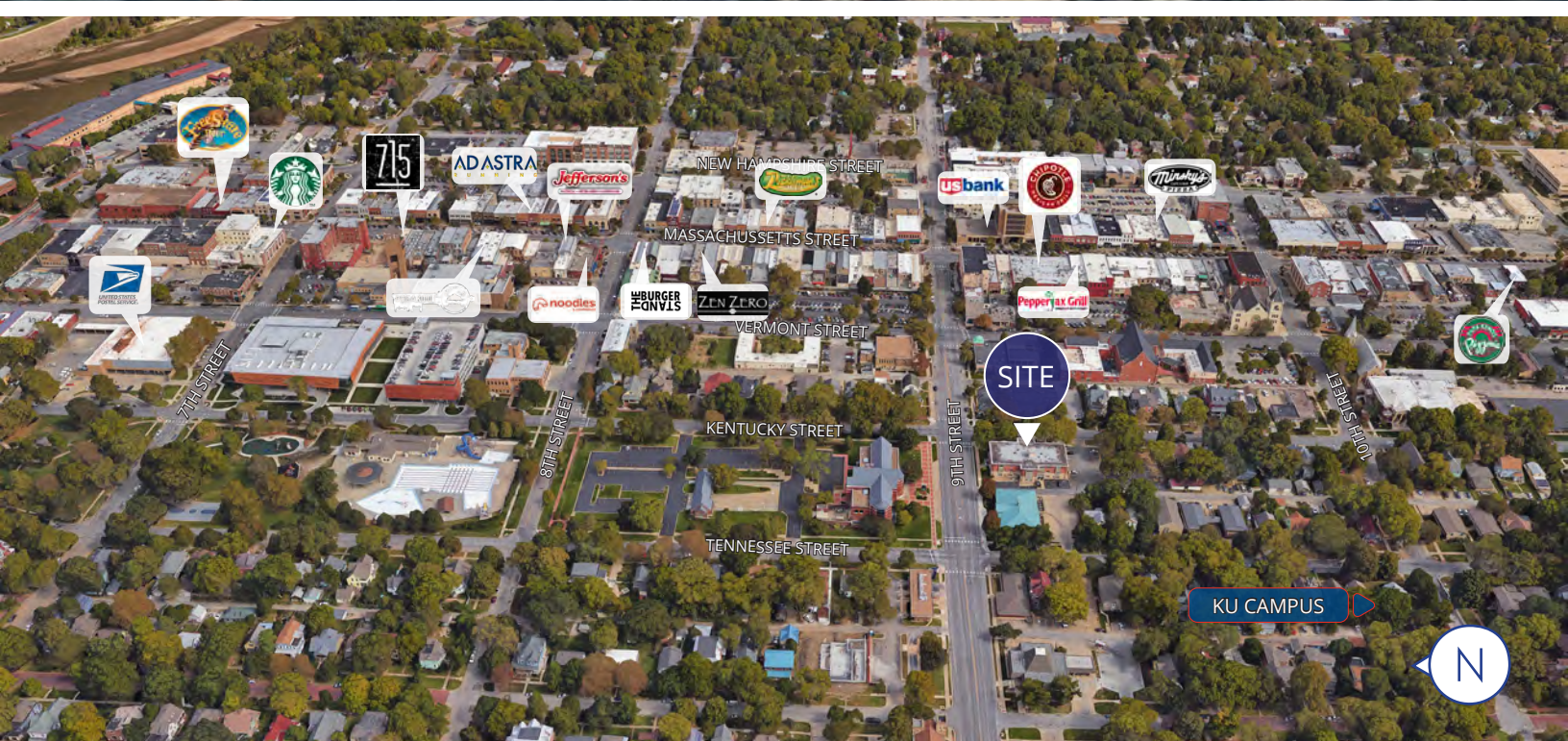
Note: hash-marked areas represent potential modifications. These changes are negotiable and may affect final pricing.

## Suite 305

### Suite Features

- 1,000 SF
- \$1,675/month, gross, plus gas & electric
- Corner suite with three offices, reception area, small kitchenette, and small storage closet





**Allison Vance Moore, SIOR**  
 Senior Vice President  
 +1 785 865 3924  
 allison.moore@colliers.com

**Colliers Lawrence**  
 3705 Clinton Parkway, Suite 201  
 Lawrence, Kansas  
 +1 785 865 5100  
 colliers.com/Lawrence

