

FOR LEASE > RETAIL

METRO LANDING

30739 – 30797 EUREKA ROAD | ROMULUS, MICHIGAN



TRAFFIC COUNTS OF 40,000

> PROPERTY HIGHLIGHTS

- 1,400 to 6,960 SF Spaces Available
- Shopping Center Services Airport Traffic and Surrounding Residents
- Pylon Signage Available
- Join Subway and Metro Airport Taxi

> DEMOGRAPHICS

	1 MILE	3 MILE	5 MILE
POPULATION	3,390	18,655	69,163
AVG. INCOME	\$54,148	\$51,411	\$59,123
HOUSEHOLDS	1,210	6,976	27,461

COLLIERS INTERNATIONAL
2 Corporate Drive | Suite 300
Southfield, Michigan 48076

For More Information Call:

BEN HUBERT

PHONE 248 540 1000 EXT 1864
EMAIL ben.hubert@colliers.com



BEN ROSENZWEIG

PHONE 248 540 1000 EXT 1866
EMAIL ben.rosenzweig@colliers.com



colliers.com/detroit



FOR LEASE > RETAIL

METRO LANDING

30739 – 30797 EUREKA ROAD | ROMULUS, MICHIGAN



> SITE PLAN



BEN HUBERT

PHONE 248 540 1000 EXT 1864
EMAIL ben.hubert@colliers.com



BEN ROSENZWEIG

PHONE 248 540 1000 EXT 1866
EMAIL ben.rosenzweig@colliers.com

FOR LEASE > RETAIL

METRO LANDING

30739 – 30797 EUREKA ROAD | ROMULUS, MICHIGAN



> PROPERTY PHOTOS



BEN HUBERT

PHONE 248 540 1000 EXT 1864
EMAIL ben.hubert@colliers.com



BEN ROSENZWEIG

PHONE 248 540 1000 EXT 1866
EMAIL ben.rosenzweig@colliers.com

FOR LEASE > RETAIL

METRO LANDING

30739 – 30797 EUREKA ROAD | ROMULUS, MICHIGAN



> BIRD'S EYE VIEW



BEN HUBERT

PHONE 248 540 1000 EXT 1864
EMAIL ben.hubert@colliers.com



BEN ROSENZWEIG

PHONE 248 540 1000 EXT 1866
EMAIL ben.rosenzweig@colliers.com

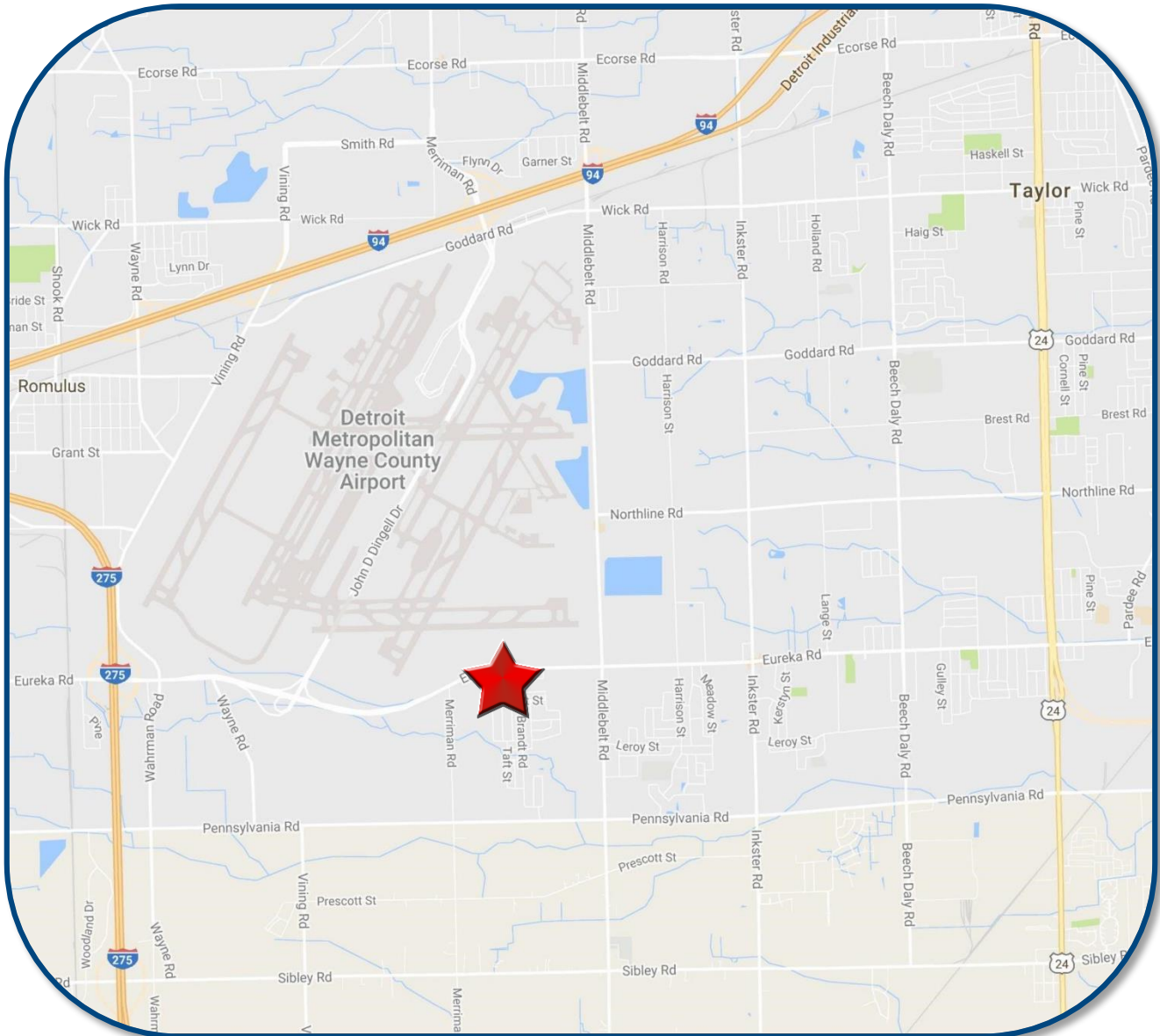
FOR LEASE > RETAIL

METRO LANDING

30739 – 30797 EUREKA ROAD | ROMULUS, MICHIGAN



> LOCATION MAP



BEN HUBERT

PHONE 248 540 1000 EXT 1864

EMAIL ben.hubert@colliers.com



BEN ROSENZWEIG

PHONE 248 540 1000 EXT 1866

EMAIL ben.rosenzweig@colliers.com

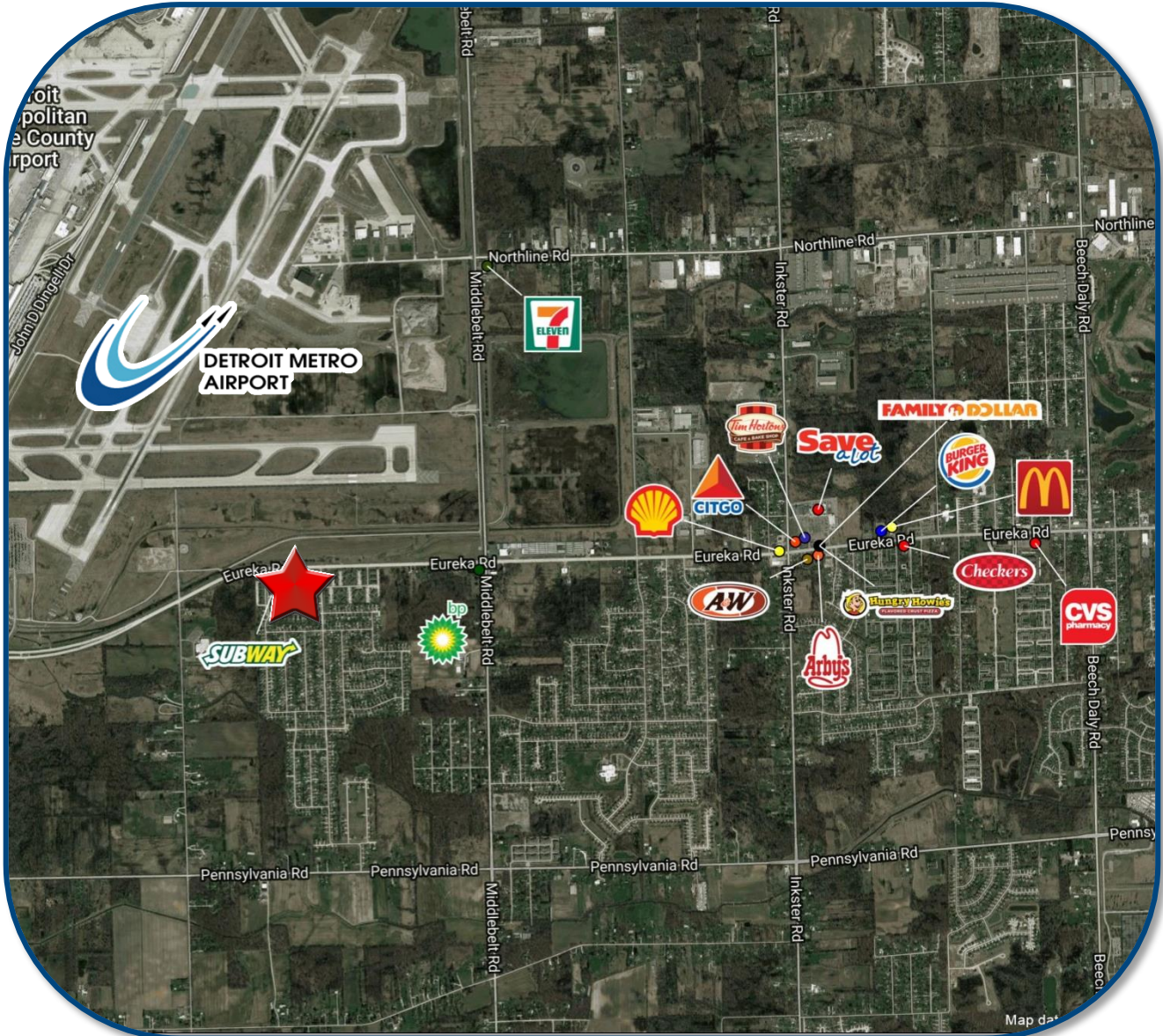
FOR LEASE > RETAIL

METRO LANDING

30739 – 30797 EUREKA ROAD | ROMULUS, MICHIGAN



> AREA MERCHANT MAP



BEN HUBERT

PHONE 248 540 1000 EXT 1864

EMAIL ben.hubert@colliers.com



BEN ROSENZWEIG

PHONE 248 540 1000 EXT 1866

EMAIL ben.rosenzweig@colliers.com

SUMMARY PROFILE

2000-2010 Census, 2016 Estimates with 2021 Projections

Calculated using Weighted Block Centroid from Block Groups



Lat/Lon: 42.1938/-83.3382

RS1

3073930797 Eureka Rd

Romulus, MI 48174-3293

1 mi radius

3 mi radius

5 mi radius

POPULATION	2016 Estimated Population	3,390	18,655	69,163
	2021 Projected Population	3,162	17,637	66,113
	2010 Census Population	3,458	19,272	70,134
	2000 Census Population	3,722	19,450	67,717
	Projected Annual Growth 2016 to 2021	-1.3%	-1.1%	-0.9%
	Historical Annual Growth 2000 to 2016	-0.6%	-0.3%	0.1%
	2016 Median Age	32.1	32.3	36.5
HOUSEHOLDS	2016 Estimated Households	1,210	6,976	27,461
	2021 Projected Households	1,166	6,803	27,040
	2010 Census Households	1,188	6,935	26,753
	2000 Census Households	1,225	6,751	25,106
	Projected Annual Growth 2016 to 2021	-0.7%	-0.5%	-0.3%
	Historical Annual Growth 2000 to 2016	-0.1%	0.2%	0.6%
RACE AND ETHNICITY	2016 Estimated White	50.3%	56.5%	66.2%
	2016 Estimated Black or African American	41.7%	35.5%	25.7%
	2016 Estimated Asian or Pacific Islander	2.1%	2.4%	3.3%
	2016 Estimated American Indian or Native Alaskan	0.6%	0.5%	0.4%
	2016 Estimated Other Races	5.3%	5.1%	4.4%
	2016 Estimated Hispanic	4.6%	5.2%	4.7%
INCOME	2016 Estimated Average Household Income	\$54,148	\$51,411	\$59,123
	2016 Estimated Median Household Income	\$46,648	\$44,802	\$49,339
	2016 Estimated Per Capita Income	\$19,365	\$19,256	\$23,574
EDUCATION (AGE 25+)	2016 Estimated Elementary (Grade Level 0 to 8)	3.0%	3.1%	3.6%
	2016 Estimated Some High School (Grade Level 9 to 11)	7.9%	11.9%	10.2%
	2016 Estimated High School Graduate	44.7%	39.2%	36.4%
	2016 Estimated Some College	27.7%	25.8%	26.9%
	2016 Estimated Associates Degree Only	6.3%	7.2%	8.3%
	2016 Estimated Bachelors Degree Only	8.1%	8.6%	9.7%
	2016 Estimated Graduate Degree	2.2%	4.2%	4.9%
BUSINESS	2016 Estimated Total Businesses	142	782	3,067
	2016 Estimated Total Employees	1,824	13,217	43,511
	2016 Estimated Employee Population per Business	12.9	16.9	14.2
	2016 Estimated Residential Population per Business	23.9	23.8	22.6

This report was produced using data from private and government sources deemed to be reliable. The information herein is provided without representation or warranty.