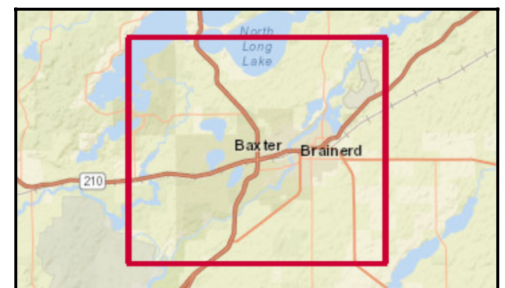
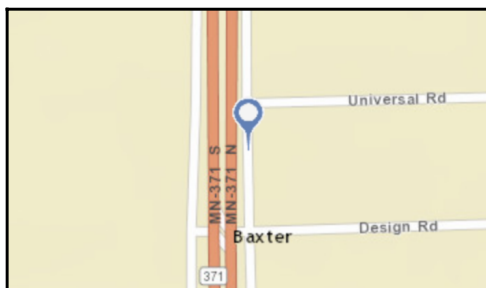
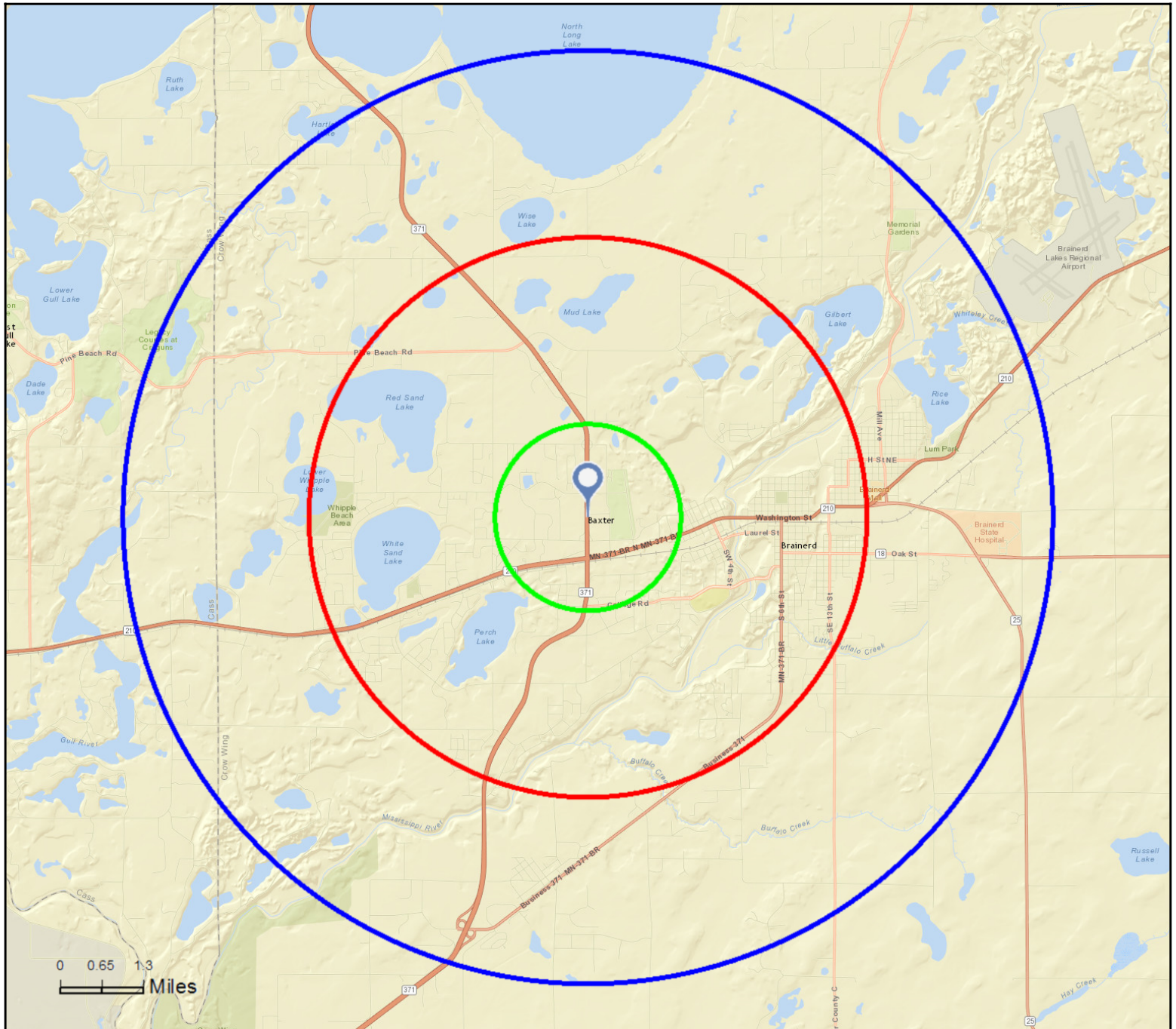




Site Map

14244 Dellwood Dr, Baxter, Minnesota, 56425
Rings: 1, 3, 5 mile radii

Colliers International
Latitude: 46.35810
Longitude: -94.24395



July 07, 2016



Executive Summary

14244 Dellwood Dr, Baxter, Minnesota, 56425
Rings: 1, 3, 5 mile radii

Colliers International
Latitude: 46.35810
Longitude: -94.24395

	1 mile	3 miles	5 miles
Population			
2000 Population	1,350	15,989	23,321
2010 Population	1,870	17,987	26,257
2016 Population	2,055	18,745	27,253
2021 Population	2,172	19,251	27,932
2000-2010 Annual Rate	3.31%	1.18%	1.19%
2010-2016 Annual Rate	1.52%	0.66%	0.60%
2016-2021 Annual Rate	1.11%	0.53%	0.49%
2016 Male Population	48.2%	48.4%	48.8%
2016 Female Population	51.9%	51.6%	51.2%
2016 Median Age	38.2	36.4	36.7

In the identified area, the current year population is 27,253. In 2010, the Census count in the area was 26,257. The rate of change since 2010 was 0.60% annually. The five-year projection for the population in the area is 27,932 representing a change of 0.49% annually from 2016 to 2021. Currently, the population is 48.8% male and 51.2% female.

Median Age

The median age in this area is 38.2, compared to U.S. median age of 38.0.

Race and Ethnicity

2016 White Alone	94.3%	93.6%	94.2%
2016 Black Alone	0.7%	1.1%	1.0%
2016 American Indian/Alaska Native Alone	0.5%	1.3%	1.2%
2016 Asian Alone	1.6%	0.8%	0.6%
2016 Pacific Islander Alone	0.1%	0.1%	0.0%
2016 Other Race	0.5%	0.4%	0.4%
2016 Two or More Races	2.3%	2.8%	2.6%
2016 Hispanic Origin (Any Race)	2.5%	2.3%	2.1%

Persons of Hispanic origin represent 2.1% of the population in the identified area compared to 17.9% of the U.S. population. Persons of Hispanic Origin may be of any race. The Diversity Index, which measures the probability that two people from the same area will be from different race/ethnic groups, is 15.0 in the identified area, compared to 63.5 for the U.S. as a whole.

Households

2000 Households	585	6,430	9,200
2010 Households	880	7,485	10,733
2016 Total Households	966	7,775	11,109
2021 Total Households	1,020	7,974	11,369
2000-2010 Annual Rate	4.17%	1.53%	1.55%
2010-2016 Annual Rate	1.50%	0.61%	0.55%
2016-2021 Annual Rate	1.09%	0.51%	0.46%
2016 Average Household Size	2.12	2.34	2.40

The household count in this area has changed from 10,733 in 2010 to 11,109 in the current year, a change of 0.55% annually. The five-year projection of households is 11,369, a change of 0.46% annually from the current year total. Average household size is currently 2.40, compared to 2.39 in the year 2010. The number of families in the current year is 6,852 in the specified area.

Data Note: Income is expressed in current dollars

Source: U.S. Census Bureau, Census 2010 Summary File 1. Esri forecasts for 2016 and 2021. Esri converted Census 2000 data into 2010 geography.

July 07, 2016



Executive Summary

14244 Dellwood Dr, Baxter, Minnesota, 56425
Rings: 1, 3, 5 mile radii

Colliers International
Latitude: 46.35810
Longitude: -94.24395

	1 mile	3 miles	5 miles
Median Household Income			
2016 Median Household Income	\$51,094	\$43,694	\$45,995
2021 Median Household Income	\$56,790	\$50,500	\$52,018
2016-2021 Annual Rate	2.14%	2.94%	2.49%
Average Household Income			
2016 Average Household Income	\$75,026	\$62,045	\$62,031
2021 Average Household Income	\$82,635	\$68,224	\$68,119
2016-2021 Annual Rate	1.95%	1.92%	1.89%
Per Capita Income			
2016 Per Capita Income	\$31,131	\$25,892	\$25,484
2021 Per Capita Income	\$34,263	\$28,383	\$27,918
2016-2021 Annual Rate	1.94%	1.85%	1.84%

Current median household income is \$45,995 in the area, compared to \$54,149 for all U.S. households. Median household income is projected to be \$52,018 in five years, compared to \$59,476 for all U.S. households

Current average household income is \$62,031 in this area, compared to \$77,008 for all U.S. households. Average household income is projected to be \$68,119 in five years, compared to \$84,021 for all U.S. households

Current per capita income is \$25,484 in the area, compared to the U.S. per capita income of \$29,472. The per capita income is projected to be \$27,918 in five years, compared to \$32,025 for all U.S. households

Housing			
2000 Total Housing Units	611	6,687	9,731
2000 Owner Occupied Housing Units	471	4,069	6,238
2000 Renter Occupied Housing Units	114	2,361	2,962
2000 Vacant Housing Units	26	257	531
2010 Total Housing Units	956	8,137	11,779
2010 Owner Occupied Housing Units	571	4,457	6,898
2010 Renter Occupied Housing Units	309	3,028	3,835
2010 Vacant Housing Units	76	652	1,046
2016 Total Housing Units	1,049	8,491	12,234
2016 Owner Occupied Housing Units	613	4,550	7,017
2016 Renter Occupied Housing Units	352	3,225	4,093
2016 Vacant Housing Units	83	716	1,125
2021 Total Housing Units	1,107	8,731	12,544
2021 Owner Occupied Housing Units	668	4,680	7,192
2021 Renter Occupied Housing Units	352	3,294	4,177
2021 Vacant Housing Units	87	757	1,175

Currently, 57.4% of the 12,234 housing units in the area are owner occupied; 33.5%, renter occupied; and 9.2% are vacant. Currently, in the U.S., 55.4% of the housing units in the area are owner occupied; 32.9% are renter occupied; and 11.7% are vacant. In 2010, there were 11,779 housing units in the area - 58.6% owner occupied, 32.6% renter occupied, and 8.9% vacant. The annual rate of change in housing units since 2010 is 1.70%. Median home value in the area is \$168,564, compared to a median home value of \$198,891 for the U.S. In five years, median value is projected to change by 2.59% annually to \$191,598.

Data Note: Income is expressed in current dollars

Source: U.S. Census Bureau, Census 2010 Summary File 1. Esri forecasts for 2016 and 2021. Esri converted Census 2000 data into 2010 geography.

July 07, 2016



2010 Census Profile

14244 Dellwood Dr, Baxter, Minnesota, 56425
Ring: 1 mile radius

Colliers International
Latitude: 46.35810
Longitude: -94.24395

	2000	2010	2000-2010 Annual Rate
Population	1,350	1,870	3.31%
Households	585	880	4.17%
Housing Units	611	956	4.58%
Population by Race			
Total		1,869	100.0%
Population Reporting One Race		1,834	98.1%
White		1,786	95.6%
Black		10	0.5%
American Indian		8	0.4%
Asian		23	1.2%
Pacific Islander		1	0.1%
Some Other Race		6	0.3%
Population Reporting Two or More Races		35	1.9%
Total Hispanic Population		30	1.6%
Population by Sex			
Male		897	48.0%
Female		973	52.0%
Population by Age			
Total		1,867	100.0%
Age 0 - 4		129	6.9%
Age 5 - 9		145	7.8%
Age 10 - 14		134	7.2%
Age 15 - 19		131	7.0%
Age 20 - 24		124	6.6%
Age 25 - 29		107	5.7%
Age 30 - 34		109	5.8%
Age 35 - 39		119	6.4%
Age 40 - 44		124	6.6%
Age 45 - 49		116	6.2%
Age 50 - 54		110	5.9%
Age 55 - 59		119	6.4%
Age 60 - 64		90	4.8%
Age 65 - 69		82	4.4%
Age 70 - 74		63	3.4%
Age 75 - 79		51	2.7%
Age 80 - 84		57	3.1%
Age 85+		59	3.2%
Age 18+		1,376	73.6%
Age 65+		312	16.7%

Data Note: Hispanic population can be of any race. Census 2010 medians are computed from reported data distributions.

Source: U.S. Census Bureau, Census 2010 Summary File 1. Esri converted Census 2000 data into 2010 geography.



2010 Census Profile

14244 Dellwood Dr, Baxter, Minnesota, 56425
Ring: 1 mile radius

Colliers International
Latitude: 46.35810
Longitude: -94.24395

Households by Type

Total	880	100.0%
Households with 1 Person	264	30.0%
Households with 2+ People	616	70.0%
Family Households	561	63.8%
Husband-wife Families	442	50.2%
With Own Children	195	22.2%
Other Family (No Spouse Present)	119	13.5%
With Own Children	76	8.6%
Nonfamily Households	55	6.3%
All Households with Children	286	32.5%
Multigenerational Households	14	1.6%
Unmarried Partner Households	66	7.5%
Male-female	64	7.3%
Same-sex	2	0.2%
Average Household Size	2.11	

Family Households by Size

Total	561	100.0%
2 People	250	44.6%
3 People	125	22.3%
4 People	109	19.4%
5 People	50	8.9%
6 People	18	3.2%
7+ People	9	1.6%
Average Family Size	2.65	

Nonfamily Households by Size

Total	319	100.0%
1 Person	264	82.8%
2 People	47	14.7%
3 People	5	1.6%
4 People	2	0.6%
5 People	1	0.3%
6 People	0	0.0%
7+ People	0	0.0%
Average Nonfamily Size	1.03	

Population by Relationship and Household Type

Total	1,870	100.0%
In Households	1,860	99.5%
In Family Households	1,530	81.8%
Householder	493	26.4%
Spouse	389	20.8%
Child	577	30.9%
Other relative	30	1.6%
Nonrelative	41	2.2%
In Nonfamily Households	330	17.6%
In Group Quarters	10	0.5%
Institutionalized Population	2	0.1%
Noninstitutionalized Population	8	0.4%

Data Note: Households with children include any households with people under age 18, related or not. Multigenerational households are families with 3 or more parent-child relationships. Unmarried partner households are usually classified as nonfamily households unless there is another member of the household related to the householder. Multigenerational and unmarried partner households are reported only to the tract level. Esri estimated block group data, which is used to estimate polygons or non-standard geography. Average family size excludes nonrelatives.

Source: U.S. Census Bureau, Census 2010 Summary File 1.



2010 Census Profile

14244 Dellwood Dr, Baxter, Minnesota, 56425
Ring: 1 mile radius

Colliers International
Latitude: 46.35810
Longitude: -94.24395

Family Households by Age of Householder

Total	562	100.0%
Householder Age 15 - 44	234	41.6%
Householder Age 45 - 54	111	19.8%
Householder Age 55 - 64	97	17.3%
Householder Age 65 - 74	63	11.2%
Householder Age 75+	57	10.1%

Nonfamily Households by Age of Householder

Total	320	100.0%
Householder Age 15 - 44	102	31.9%
Householder Age 45 - 54	36	11.3%
Householder Age 55 - 64	50	15.6%
Householder Age 65 - 74	40	12.5%
Householder Age 75+	92	28.8%

Households by Race of Householder

Total	880	100.0%
Householder is White Alone	853	96.9%
Householder is Black Alone	3	0.3%
Householder is American Indian Alone	3	0.3%
Householder is Asian Alone	8	0.9%
Householder is Pacific Islander Alone	1	0.1%
Householder is Some Other Race Alone	2	0.2%
Householder is Two or More Races	10	1.1%
Households with Hispanic Householder	9	1.0%

Husband-wife Families by Race of Householder

Total	442	100.0%
Householder is White Alone	431	97.5%
Householder is Black Alone	1	0.2%
Householder is American Indian Alone	1	0.2%
Householder is Asian Alone	5	1.1%
Householder is Pacific Islander Alone	0	0.0%
Householder is Some Other Race Alone	0	0.0%
Householder is Two or More Races	4	0.9%
Husband-wife Families with Hispanic Householder	3	0.7%

Other Families (No Spouse) by Race of Householder

Total	120	100.0%
Householder is White Alone	113	94.2%
Householder is Black Alone	1	0.8%
Householder is American Indian Alone	0	0.0%
Householder is Asian Alone	1	0.8%
Householder is Pacific Islander Alone	1	0.8%
Householder is Some Other Race Alone	1	0.8%
Householder is Two or More Races	3	2.5%
Other Families with Hispanic Householder	4	3.4%

Nonfamily Households by Race of Householder

Total	319	100.0%
Householder is White Alone	309	96.9%
Householder is Black Alone	2	0.6%
Householder is American Indian Alone	1	0.3%
Householder is Asian Alone	2	0.6%
Householder is Pacific Islander Alone	0	0.0%
Householder is Some Other Race Alone	1	0.3%
Householder is Two or More Races	4	1.3%
Nonfamily Households with Hispanic Householder	2	0.6%

Source: U.S. Census Bureau, Census 2010 Summary File 1.



2010 Census Profile

14244 Dellwood Dr, Baxter, Minnesota, 56425
Ring: 1 mile radius

Colliers International
Latitude: 46.35810
Longitude: -94.24395

Total Housing Units by Occupancy

Total	948	100.0%
Occupied Housing Units	880	92.8%
Vacant Housing Units		
For Rent	20	2.1%
Rented, not Occupied	3	0.3%
For Sale Only	18	1.9%
Sold, not Occupied	2	0.2%
For Seasonal/Recreational/Occasional Use	14	1.5%
For Migrant Workers	0	0.0%
Other Vacant	11	1.2%
Total Vacancy Rate	7.9%	

Households by Tenure and Mortgage Status

Total	880	100.0%
Owner Occupied	571	64.9%
Owned with a Mortgage/Loan	420	47.7%
Owned Free and Clear	151	17.2%
Average Household Size	2.34	
Renter Occupied	309	35.1%
Average Household Size	1.69	

Owner-occupied Housing Units by Race of Householder

Total	570	100.0%
Householder is White Alone	561	98.4%
Householder is Black Alone	1	0.2%
Householder is American Indian Alone	1	0.2%
Householder is Asian Alone	4	0.7%
Householder is Pacific Islander Alone	0	0.0%
Householder is Some Other Race Alone	0	0.0%
Householder is Two or More Races	3	0.5%
Owner-occupied Housing Units with Hispanic Householder	4	0.7%

Renter-occupied Housing Units by Race of Householder

Total	309	100.0%
Householder is White Alone	291	94.2%
Householder is Black Alone	2	0.6%
Householder is American Indian Alone	2	0.6%
Householder is Asian Alone	4	1.3%
Householder is Pacific Islander Alone	1	0.3%
Householder is Some Other Race Alone	2	0.6%
Householder is Two or More Races	7	2.3%
Renter-occupied Housing Units with Hispanic Householder	5	1.6%

Average Household Size by Race/Hispanic Origin of Householder

Householder is White Alone	2.10
Householder is Black Alone	3.67
Householder is American Indian Alone	2.33
Householder is Asian Alone	2.63
Householder is Pacific Islander Alone	1.00
Householder is Some Other Race Alone	2.50
Householder is Two or More Races	2.30
Householder is Hispanic	2.89

Source: U.S. Census Bureau, Census 2010 Summary File 1.



2010 Census Profile

14244 Dellwood Dr, Baxter, Minnesota, 56425
Ring: 3 mile radius

Colliers International
Latitude: 46.35810
Longitude: -94.24395

	2000	2010	2000-2010 Annual Rate
Population	15,989	17,987	1.18%
Households	6,430	7,485	1.53%
Housing Units	6,687	8,137	1.98%
Population by Race			
Total		17,987	100.0%
Population Reporting One Race		17,576	97.7%
White		17,037	94.7%
Black		164	0.9%
American Indian		213	1.2%
Asian		105	0.6%
Pacific Islander		7	0.0%
Some Other Race		50	0.3%
Population Reporting Two or More Races		411	2.3%
Total Hispanic Population		276	1.5%
Population by Sex			
Male		8,662	48.2%
Female		9,325	51.8%
Population by Age			
Total		17,988	100.0%
Age 0 - 4		1,363	7.6%
Age 5 - 9		1,254	7.0%
Age 10 - 14		1,147	6.4%
Age 15 - 19		1,284	7.1%
Age 20 - 24		1,388	7.7%
Age 25 - 29		1,345	7.5%
Age 30 - 34		1,131	6.3%
Age 35 - 39		1,048	5.8%
Age 40 - 44		1,041	5.8%
Age 45 - 49		1,192	6.6%
Age 50 - 54		1,084	6.0%
Age 55 - 59		1,079	6.0%
Age 60 - 64		819	4.6%
Age 65 - 69		674	3.7%
Age 70 - 74		503	2.8%
Age 75 - 79		491	2.7%
Age 80 - 84		480	2.7%
Age 85+		665	3.7%
Age 18+		13,513	75.1%
Age 65+		2,813	15.6%

Data Note: Hispanic population can be of any race. Census 2010 medians are computed from reported data distributions.

Source: U.S. Census Bureau, Census 2010 Summary File 1. Esri converted Census 2000 data into 2010 geography.



2010 Census Profile

14244 Dellwood Dr, Baxter, Minnesota, 56425
Ring: 3 mile radius

Colliers International
Latitude: 46.35810
Longitude: -94.24395

Households by Type

Total	7,485	100.0%
Households with 1 Person	2,461	32.9%
Households with 2+ People	5,024	67.1%
Family Households	4,429	59.2%
Husband-wife Families	3,220	43.0%
With Own Children	1,372	18.3%
Other Family (No Spouse Present)	1,209	16.2%
With Own Children	842	11.2%
Nonfamily Households	595	7.9%
All Households with Children	2,358	31.5%
Multigenerational Households	111	1.5%
Unmarried Partner Households	648	8.7%
Male-female	617	8.2%
Same-sex	31	0.4%
Average Household Size	2.33	

Family Households by Size

Total	4,429	100.0%
2 People	1,981	44.7%
3 People	986	22.3%
4 People	867	19.6%
5 People	387	8.7%
6 People	151	3.4%
7+ People	57	1.3%
Average Family Size	2.96	

Nonfamily Households by Size

Total	3,056	100.0%
1 Person	2,461	80.5%
2 People	479	15.7%
3 People	64	2.1%
4 People	39	1.3%
5 People	12	0.4%
6 People	0	0.0%
7+ People	1	0.0%
Average Nonfamily Size	1.25	

Population by Relationship and Household Type

Total	17,987	100.0%
In Households	17,463	97.1%
In Family Households	13,629	75.8%
Householder	4,416	24.6%
Spouse	3,205	17.8%
Child	5,212	29.0%
Other relative	272	1.5%
Nonrelative	524	2.9%
In Nonfamily Households	3,834	21.3%
In Group Quarters	524	2.9%
Institutionalized Population	359	2.0%
Noninstitutionalized Population	165	0.9%

Data Note: **Households with children** include any households with people under age 18, related or not. **Multigenerational households** are families with 3 or more parent-child relationships. **Unmarried partner households** are usually classified as nonfamily households unless there is another member of the household related to the householder. Multigenerational and unmarried partner households are reported only to the tract level. Esri estimated block group data, which is used to estimate polygons or non-standard geography. **Average family size** excludes nonrelatives.

Source: U.S. Census Bureau, Census 2010 Summary File 1.



2010 Census Profile

14244 Dellwood Dr, Baxter, Minnesota, 56425
Ring: 3 mile radius

Colliers International
Latitude: 46.35810
Longitude: -94.24395

Family Households by Age of Householder

Total	4,430	100.0%
Householder Age 15 - 44	2,001	45.2%
Householder Age 45 - 54	906	20.5%
Householder Age 55 - 64	700	15.8%
Householder Age 65 - 74	417	9.4%
Householder Age 75+	406	9.2%

Nonfamily Households by Age of Householder

Total	3,056	100.0%
Householder Age 15 - 44	1,093	35.8%
Householder Age 45 - 54	446	14.6%
Householder Age 55 - 64	485	15.9%
Householder Age 65 - 74	321	10.5%
Householder Age 75+	711	23.3%

Households by Race of Householder

Total	7,486	100.0%
Householder is White Alone	7,223	96.5%
Householder is Black Alone	51	0.7%
Householder is American Indian Alone	61	0.8%
Householder is Asian Alone	41	0.5%
Householder is Pacific Islander Alone	3	0.0%
Householder is Some Other Race Alone	15	0.2%
Householder is Two or More Races	92	1.2%
Households with Hispanic Householder	78	1.0%

Husband-wife Families by Race of Householder

Total	3,220	100.0%
Householder is White Alone	3,145	97.7%
Householder is Black Alone	9	0.3%
Householder is American Indian Alone	16	0.5%
Householder is Asian Alone	20	0.6%
Householder is Pacific Islander Alone	1	0.0%
Householder is Some Other Race Alone	2	0.1%
Householder is Two or More Races	27	0.8%
Husband-wife Families with Hispanic Householder	23	0.7%

Other Families (No Spouse) by Race of Householder

Total	1,208	100.0%
Householder is White Alone	1,133	93.8%
Householder is Black Alone	13	1.1%
Householder is American Indian Alone	22	1.8%
Householder is Asian Alone	3	0.2%
Householder is Pacific Islander Alone	2	0.2%
Householder is Some Other Race Alone	6	0.5%
Householder is Two or More Races	29	2.4%
Other Families with Hispanic Householder	29	2.4%

Nonfamily Households by Race of Householder

Total	3,055	100.0%
Householder is White Alone	2,945	96.4%
Householder is Black Alone	29	0.9%
Householder is American Indian Alone	22	0.7%
Householder is Asian Alone	17	0.6%
Householder is Pacific Islander Alone	0	0.0%
Householder is Some Other Race Alone	7	0.2%
Householder is Two or More Races	35	1.1%
Nonfamily Households with Hispanic Householder	26	0.9%

Source: U.S. Census Bureau, Census 2010 Summary File 1.



2010 Census Profile

14244 Dellwood Dr, Baxter, Minnesota, 56425
Ring: 3 mile radius

Colliers International
Latitude: 46.35810
Longitude: -94.24395

Total Housing Units by Occupancy

Total	8,128	100.0%
Occupied Housing Units	7,485	92.1%
Vacant Housing Units		
For Rent	238	2.9%
Rented, not Occupied	20	0.2%
For Sale Only	148	1.8%
Sold, not Occupied	15	0.2%
For Seasonal/Recreational/Occasional Use	94	1.2%
For Migrant Workers	1	0.0%
Other Vacant	127	1.6%
Total Vacancy Rate	8.0%	

Households by Tenure and Mortgage Status

Total	7,485	100.0%
Owner Occupied	4,457	59.5%
Owned with a Mortgage/Loan	3,204	42.8%
Owned Free and Clear	1,254	16.8%
Average Household Size	2.57	
Renter Occupied	3,028	40.5%
Average Household Size	1.98	

Owner-occupied Housing Units by Race of Householder

Total	4,456	100.0%
Householder is White Alone	4,378	98.2%
Householder is Black Alone	9	0.2%
Householder is American Indian Alone	14	0.3%
Householder is Asian Alone	19	0.4%
Householder is Pacific Islander Alone	2	0.0%
Householder is Some Other Race Alone	3	0.1%
Householder is Two or More Races	31	0.7%
Owner-occupied Housing Units with Hispanic Householder	29	0.7%

Renter-occupied Housing Units by Race of Householder

Total	3,028	100.0%
Householder is White Alone	2,845	94.0%
Householder is Black Alone	41	1.4%
Householder is American Indian Alone	47	1.6%
Householder is Asian Alone	21	0.7%
Householder is Pacific Islander Alone	1	0.0%
Householder is Some Other Race Alone	12	0.4%
Householder is Two or More Races	61	2.0%
Renter-occupied Housing Units with Hispanic Householder	49	1.6%

Average Household Size by Race/Hispanic Origin of Householder

Householder is White Alone	2.32
Householder is Black Alone	2.67
Householder is American Indian Alone	3.03
Householder is Asian Alone	2.49
Householder is Pacific Islander Alone	2.00
Householder is Some Other Race Alone	2.47
Householder is Two or More Races	2.66
Householder is Hispanic	2.76

Source: U.S. Census Bureau, Census 2010 Summary File 1.



2010 Census Profile

14244 Dellwood Dr, Baxter, Minnesota, 56425
Ring: 5 mile radius

Colliers International
Latitude: 46.35810
Longitude: -94.24395

	2000	2010	2000-2010 Annual Rate
Population	23,321	26,257	1.19%
Households	9,200	10,733	1.55%
Housing Units	9,731	11,779	1.93%
Population by Race			
Total		26,257	100.0%
Population Reporting One Race		25,696	97.9%
White		24,995	95.2%
Black		210	0.8%
American Indian		283	1.1%
Asian		128	0.5%
Pacific Islander		9	0.0%
Some Other Race		71	0.3%
Population Reporting Two or More Races		561	2.1%
Total Hispanic Population		376	1.4%
Population by Sex			
Male		12,746	48.5%
Female		13,511	51.5%
Population by Age			
Total		26,257	100.0%
Age 0 - 4		2,007	7.6%
Age 5 - 9		1,885	7.2%
Age 10 - 14		1,716	6.5%
Age 15 - 19		1,827	7.0%
Age 20 - 24		1,846	7.0%
Age 25 - 29		1,967	7.5%
Age 30 - 34		1,692	6.4%
Age 35 - 39		1,552	5.9%
Age 40 - 44		1,525	5.8%
Age 45 - 49		1,783	6.8%
Age 50 - 54		1,684	6.4%
Age 55 - 59		1,611	6.1%
Age 60 - 64		1,264	4.8%
Age 65 - 69		1,019	3.9%
Age 70 - 74		779	3.0%
Age 75 - 79		669	2.5%
Age 80 - 84		634	2.4%
Age 85+		797	3.0%
Age 18+		19,605	74.7%
Age 65+		3,898	14.8%

Data Note: Hispanic population can be of any race. Census 2010 medians are computed from reported data distributions.

Source: U.S. Census Bureau, Census 2010 Summary File 1. Esri converted Census 2000 data into 2010 geography.



2010 Census Profile

14244 Dellwood Dr, Baxter, Minnesota, 56425
Ring: 5 mile radius

Colliers International
Latitude: 46.35810
Longitude: -94.24395

Households by Type

Total	10,733	100.0%
Households with 1 Person	3,249	30.3%
Households with 2+ People	7,484	69.7%
Family Households	6,663	62.1%
Husband-wife Families	4,875	45.4%
With Own Children	2,035	19.0%
Other Family (No Spouse Present)	1,788	16.7%
With Own Children	1,225	11.4%
Nonfamily Households	821	7.6%
All Households with Children	3,489	32.5%
Multigenerational Households	179	1.7%
Unmarried Partner Households	967	9.0%
Male-female	922	8.6%
Same-sex	45	0.4%
Average Household Size	2.39	

Family Households by Size

Total	6,663	100.0%
2 People	2,986	44.8%
3 People	1,473	22.1%
4 People	1,298	19.5%
5 People	596	8.9%
6 People	223	3.3%
7+ People	87	1.3%
Average Family Size	2.96	

Nonfamily Households by Size

Total	4,070	100.0%
1 Person	3,249	79.8%
2 People	665	16.3%
3 People	88	2.2%
4 People	51	1.3%
5 People	16	0.4%
6 People	0	0.0%
7+ People	1	0.0%
Average Nonfamily Size	1.26	

Population by Relationship and Household Type

Total	26,257	100.0%
In Households	25,661	97.7%
In Family Households	20,532	78.2%
Householder	6,654	25.3%
Spouse	4,869	18.5%
Child	7,816	29.8%
Other relative	414	1.6%
Nonrelative	780	3.0%
In Nonfamily Households	5,129	19.5%
In Group Quarters	596	2.3%
Institutionalized Population	370	1.4%
Noninstitutionalized Population	227	0.9%

Data Note: Households with children include any households with people under age 18, related or not. Multigenerational households are families with 3 or more parent-child relationships. Unmarried partner households are usually classified as nonfamily households unless there is another member of the household related to the householder. Multigenerational and unmarried partner households are reported only to the tract level. Esri estimated block group data, which is used to estimate polygons or non-standard geography. Average family size excludes nonrelatives.

Source: U.S. Census Bureau, Census 2010 Summary File 1.



2010 Census Profile

14244 Dellwood Dr, Baxter, Minnesota, 56425
Ring: 5 mile radius

Colliers International
Latitude: 46.35810
Longitude: -94.24395

Family Households by Age of Householder

Total	6,663	100.0%
Householder Age 15 - 44	2,952	44.3%
Householder Age 45 - 54	1,382	20.7%
Householder Age 55 - 64	1,095	16.4%
Householder Age 65 - 74	665	10.0%
Householder Age 75+	569	8.5%

Nonfamily Households by Age of Householder

Total	4,068	100.0%
Householder Age 15 - 44	1,423	35.0%
Householder Age 45 - 54	643	15.8%
Householder Age 55 - 64	675	16.6%
Householder Age 65 - 74	447	11.0%
Householder Age 75+	880	21.6%

Households by Race of Householder

Total	10,733	100.0%
Householder is White Alone	10,399	96.9%
Householder is Black Alone	62	0.6%
Householder is American Indian Alone	79	0.7%
Householder is Asian Alone	45	0.4%
Householder is Pacific Islander Alone	4	0.0%
Householder is Some Other Race Alone	19	0.2%
Householder is Two or More Races	125	1.2%
Households with Hispanic Householder	106	1.0%

Husband-wife Families by Race of Householder

Total	4,875	100.0%
Householder is White Alone	4,776	98.0%
Householder is Black Alone	12	0.2%
Householder is American Indian Alone	25	0.5%
Householder is Asian Alone	22	0.5%
Householder is Pacific Islander Alone	1	0.0%
Householder is Some Other Race Alone	2	0.0%
Householder is Two or More Races	37	0.8%
Husband-wife Families with Hispanic Householder	31	0.6%

Other Families (No Spouse) by Race of Householder

Total	1,788	100.0%
Householder is White Alone	1,688	94.4%
Householder is Black Alone	16	0.9%
Householder is American Indian Alone	27	1.5%
Householder is Asian Alone	4	0.2%
Householder is Pacific Islander Alone	2	0.1%
Householder is Some Other Race Alone	9	0.5%
Householder is Two or More Races	42	2.3%
Other Families with Hispanic Householder	36	2.0%

Nonfamily Households by Race of Householder

Total	4,071	100.0%
Householder is White Alone	3,935	96.7%
Householder is Black Alone	34	0.8%
Householder is American Indian Alone	27	0.7%
Householder is Asian Alone	19	0.5%
Householder is Pacific Islander Alone	1	0.0%
Householder is Some Other Race Alone	9	0.2%
Householder is Two or More Races	46	1.1%
Nonfamily Households with Hispanic Householder	38	0.9%

Source: U.S. Census Bureau, Census 2010 Summary File 1.



2010 Census Profile

14244 Dellwood Dr, Baxter, Minnesota, 56425
Ring: 5 mile radius

Colliers International
Latitude: 46.35810
Longitude: -94.24395

Total Housing Units by Occupancy

Total	11,787	100.0%
Occupied Housing Units	10,733	91.1%
Vacant Housing Units		
For Rent	315	2.7%
Rented, not Occupied	24	0.2%
For Sale Only	218	1.8%
Sold, not Occupied	22	0.2%
For Seasonal/Recreational/Occasional Use	284	2.4%
For Migrant Workers	1	0.0%
Other Vacant	190	1.6%
Total Vacancy Rate	8.9%	

Households by Tenure and Mortgage Status

Total	10,733	100.0%
Owner Occupied	6,898	64.3%
Owned with a Mortgage/Loan	4,974	46.3%
Owned Free and Clear	1,923	17.9%
Average Household Size	2.58	
Renter Occupied	3,835	35.7%
Average Household Size	2.06	

Owner-occupied Housing Units by Race of Householder

Total	6,899	100.0%
Householder is White Alone	6,786	98.4%
Householder is Black Alone	12	0.2%
Householder is American Indian Alone	22	0.3%
Householder is Asian Alone	22	0.3%
Householder is Pacific Islander Alone	3	0.0%
Householder is Some Other Race Alone	6	0.1%
Householder is Two or More Races	48	0.7%
Owner-occupied Housing Units with Hispanic Householder	46	0.7%

Renter-occupied Housing Units by Race of Householder

Total	3,836	100.0%
Householder is White Alone	3,614	94.2%
Householder is Black Alone	50	1.3%
Householder is American Indian Alone	57	1.5%
Householder is Asian Alone	23	0.6%
Householder is Pacific Islander Alone	1	0.0%
Householder is Some Other Race Alone	14	0.4%
Householder is Two or More Races	77	2.0%
Renter-occupied Housing Units with Hispanic Householder	60	1.6%

Average Household Size by Race/Hispanic Origin of Householder

Householder is White Alone	2.38
Householder is Black Alone	2.68
Householder is American Indian Alone	3.06
Householder is Asian Alone	2.53
Householder is Pacific Islander Alone	2.00
Householder is Some Other Race Alone	2.89
Householder is Two or More Races	2.66
Householder is Hispanic	2.70

Source: U.S. Census Bureau, Census 2010 Summary File 1.



Demographic and Income Comparison Profile

14244 Dellwood Dr, Baxter, Minnesota, 56425
Rings: 1, 3, 5 mile radii

Colliers International
Latitude: 46.35810
Longitude: -94.24395

	1 mile	3 miles	5 miles
Census 2010 Summary			
Population	1,870	17,987	26,257
Households	880	7,485	10,733
Families	561	4,429	6,663
Average Household Size	2.11	2.33	2.39
Owner Occupied Housing Units	571	4,457	6,898
Renter Occupied Housing Units	309	3,028	3,835
Median Age	37.3	35.4	35.6
2016 Summary			
Population	2,055	18,745	27,253
Households	966	7,775	11,109
Families	612	4,572	6,852
Average Household Size	2.12	2.34	2.40
Owner Occupied Housing Units	613	4,550	7,017
Renter Occupied Housing Units	352	3,225	4,093
Median Age	38.2	36.4	36.7
Median Household Income	\$51,094	\$43,694	\$45,995
Average Household Income	\$75,026	\$62,045	\$62,031
2021 Summary			
Population	2,172	19,251	27,932
Households	1,020	7,974	11,369
Families	644	4,675	6,989
Average Household Size	2.12	2.35	2.40
Owner Occupied Housing Units	668	4,680	7,192
Renter Occupied Housing Units	352	3,294	4,177
Median Age	37.2	37.3	37.6
Median Household Income	\$56,790	\$50,500	\$52,018
Average Household Income	\$82,635	\$68,224	\$68,119
Trends: 2016-2021 Annual Rate			
Population	1.11%	0.53%	0.49%
Households	1.09%	0.51%	0.46%
Families	1.02%	0.45%	0.40%
Owner Households	1.73%	0.57%	0.49%
Median Household Income	2.14%	2.94%	2.49%

Source: U.S. Census Bureau, Census 2010 Summary File 1. Esri forecasts for 2016 and 2021.

July 07, 2016



Demographic and Income Comparison Profile

14244 Dellwood Dr, Baxter, Minnesota, 56425
Rings: 1, 3, 5 mile radii

Colliers International
Latitude: 46.35810
Longitude: -94.24395

2016 Households by Income	1 mile		3 miles		5 miles	
	Number	Percent	Number	Percent	Number	Percent
<\$15,000	120	12.4%	1,224	15.7%	1,541	13.9%
\$15,000 - \$24,999	115	11.9%	1,124	14.5%	1,533	13.8%
\$25,000 - \$34,999	107	11.1%	887	11.4%	1,312	11.8%
\$35,000 - \$49,999	133	13.8%	1,003	12.9%	1,484	13.4%
\$50,000 - \$74,999	137	14.2%	1,379	17.7%	2,102	18.9%
\$75,000 - \$99,999	150	15.5%	965	12.4%	1,438	12.9%
\$100,000 - \$149,999	111	11.5%	723	9.3%	1,117	10.1%
\$150,000 - \$199,999	37	3.8%	223	2.9%	287	2.6%
\$200,000+	57	5.9%	248	3.2%	296	2.7%
Median Household Income	\$51,094		\$43,694		\$45,995	
Average Household Income	\$75,026		\$62,045		\$62,031	
Per Capita Income	\$31,131		\$25,892		\$25,484	

2021 Households by Income	1 mile		3 miles		5 miles	
	Number	Percent	Number	Percent	Number	Percent
<\$15,000	123	12.1%	1,233	15.5%	1,555	13.7%
\$15,000 - \$24,999	111	10.9%	1,059	13.3%	1,454	12.8%
\$25,000 - \$34,999	132	12.9%	925	11.6%	1,376	12.1%
\$35,000 - \$49,999	101	9.9%	725	9.1%	1,035	9.1%
\$50,000 - \$74,999	127	12.5%	1,467	18.4%	2,216	19.5%
\$75,000 - \$99,999	158	15.5%	1,077	13.5%	1,607	14.1%
\$100,000 - \$149,999	150	14.7%	913	11.4%	1,411	12.4%
\$150,000 - \$199,999	54	5.3%	300	3.8%	387	3.4%
\$200,000+	65	6.4%	274	3.4%	328	2.9%
Median Household Income	\$56,790		\$50,500		\$52,018	
Average Household Income	\$82,635		\$68,224		\$68,119	
Per Capita Income	\$34,263		\$28,383		\$27,918	

Data Note: Income is expressed in current dollars.

Source: U.S. Census Bureau, Census 2010 Summary File 1. Esri forecasts for 2016 and 2021.

July 07, 2016



Demographic and Income Comparison Profile

14244 Dellwood Dr, Baxter, Minnesota, 56425
Rings: 1, 3, 5 mile radii

Colliers International
Latitude: 46.35810
Longitude: -94.24395

2010 Population by Age	1 mile		3 miles		5 miles	
	Number	Percent	Number	Percent	Number	Percent
Age 0 - 4	129	6.9%	1,363	7.6%	2,007	7.6%
Age 5 - 9	145	7.8%	1,254	7.0%	1,885	7.2%
Age 10 - 14	134	7.2%	1,147	6.4%	1,716	6.5%
Age 15 - 19	131	7.0%	1,284	7.1%	1,827	7.0%
Age 20 - 24	124	6.6%	1,388	7.7%	1,846	7.0%
Age 25 - 34	216	11.6%	2,476	13.8%	3,659	13.9%
Age 35 - 44	243	13.0%	2,089	11.6%	3,077	11.7%
Age 45 - 54	226	12.1%	2,276	12.7%	3,467	13.2%
Age 55 - 64	209	11.2%	1,898	10.6%	2,875	10.9%
Age 65 - 74	145	7.8%	1,177	6.5%	1,798	6.8%
Age 75 - 84	108	5.8%	971	5.4%	1,303	5.0%
Age 85+	59	3.2%	665	3.7%	797	3.0%

2016 Population by Age	Number		Percent		Number		Percent	
Age 0 - 4	135	6.6%	1,340	7.1%	1,954	7.2%		
Age 5 - 9	151	7.4%	1,315	7.0%	1,940	7.1%		
Age 10 - 14	143	7.0%	1,198	6.4%	1,793	6.6%		
Age 15 - 19	132	6.4%	1,200	6.4%	1,732	6.4%		
Age 20 - 24	133	6.5%	1,352	7.2%	1,849	6.8%		
Age 25 - 34	253	12.3%	2,633	14.0%	3,768	13.8%		
Age 35 - 44	252	12.3%	2,205	11.8%	3,256	11.9%		
Age 45 - 54	230	11.2%	2,176	11.6%	3,253	11.9%		
Age 55 - 64	245	11.9%	2,146	11.4%	3,280	12.0%		
Age 65 - 74	194	9.4%	1,513	8.1%	2,262	8.3%		
Age 75 - 84	118	5.7%	967	5.2%	1,327	4.9%		
Age 85+	68	3.3%	702	3.7%	838	3.1%		

2021 Population by Age	Number		Percent		Number		Percent	
Age 0 - 4	149	6.9%	1,366	7.1%	1,981	7.1%		
Age 5 - 9	154	7.1%	1,310	6.8%	1,915	6.9%		
Age 10 - 14	162	7.5%	1,282	6.7%	1,886	6.8%		
Age 15 - 19	141	6.5%	1,232	6.4%	1,789	6.4%		
Age 20 - 24	107	4.9%	1,193	6.2%	1,687	6.0%		
Age 25 - 34	311	14.3%	2,663	13.8%	3,740	13.4%		
Age 35 - 44	272	12.5%	2,412	12.5%	3,538	12.7%		
Age 45 - 54	242	11.1%	2,096	10.9%	3,092	11.1%		
Age 55 - 64	238	11.0%	2,180	11.3%	3,344	12.0%		
Age 65 - 74	211	9.7%	1,782	9.3%	2,663	9.5%		
Age 75 - 84	121	5.6%	1,042	5.4%	1,464	5.2%		
Age 85+	65	3.0%	693	3.6%	834	3.0%		

Source: U.S. Census Bureau, Census 2010 Summary File 1. Esri forecasts for 2016 and 2021.

July 07, 2016



Demographic and Income Comparison Profile

14244 Dellwood Dr, Baxter, Minnesota, 56425
Rings: 1, 3, 5 mile radii

Colliers International
Latitude: 46.35810
Longitude: -94.24395

2010 Race and Ethnicity	1 mile		3 miles		5 miles	
	Number	Percent	Number	Percent	Number	Percent
White Alone	1,786	95.6%	17,037	94.7%	24,995	95.2%
Black Alone	10	0.5%	164	0.9%	210	0.8%
American Indian Alone	8	0.4%	213	1.2%	283	1.1%
Asian Alone	23	1.2%	105	0.6%	128	0.5%
Pacific Islander Alone	1	0.1%	7	0.0%	9	0.0%
Some Other Race Alone	6	0.3%	50	0.3%	71	0.3%
Two or More Races	35	1.9%	411	2.3%	561	2.1%
Hispanic Origin (Any Race)	30	1.6%	276	1.5%	376	1.4%

2016 Race and Ethnicity	Number		Percent		Number	
	Number	Percent	Number	Percent	Number	Percent
White Alone	1,937	94.3%	17,545	93.6%	25,660	94.2%
Black Alone	15	0.7%	212	1.1%	271	1.0%
American Indian Alone	10	0.5%	241	1.3%	321	1.2%
Asian Alone	32	1.6%	143	0.8%	174	0.6%
Pacific Islander Alone	3	0.1%	11	0.1%	13	0.0%
Some Other Race Alone	10	0.5%	76	0.4%	109	0.4%
Two or More Races	48	2.3%	517	2.8%	705	2.6%
Hispanic Origin (Any Race)	51	2.5%	425	2.3%	575	2.1%

2021 Race and Ethnicity	Number		Percent		Number	
	Number	Percent	Number	Percent	Number	Percent
White Alone	2,023	93.1%	17,811	92.5%	26,022	93.2%
Black Alone	19	0.9%	258	1.3%	328	1.2%
American Indian Alone	12	0.6%	265	1.4%	354	1.3%
Asian Alone	40	1.8%	177	0.9%	216	0.8%
Pacific Islander Alone	4	0.2%	14	0.1%	18	0.1%
Some Other Race Alone	14	0.6%	99	0.5%	142	0.5%
Two or More Races	60	2.8%	626	3.3%	853	3.1%
Hispanic Origin (Any Race)	70	3.2%	570	3.0%	769	2.8%

Source: U.S. Census Bureau, Census 2010 Summary File 1. Esri forecasts for 2016 and 2021.

July 07, 2016



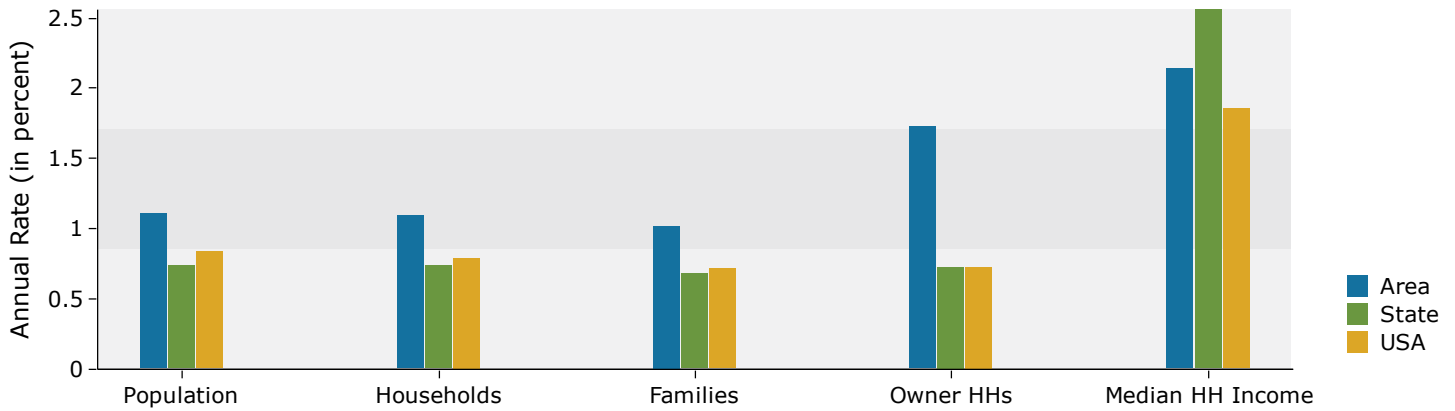
Demographic and Income Comparison Profile

14244 Dellwood Dr, Baxter, Minnesota, 56425
Rings: 1, 3, 5 mile radii

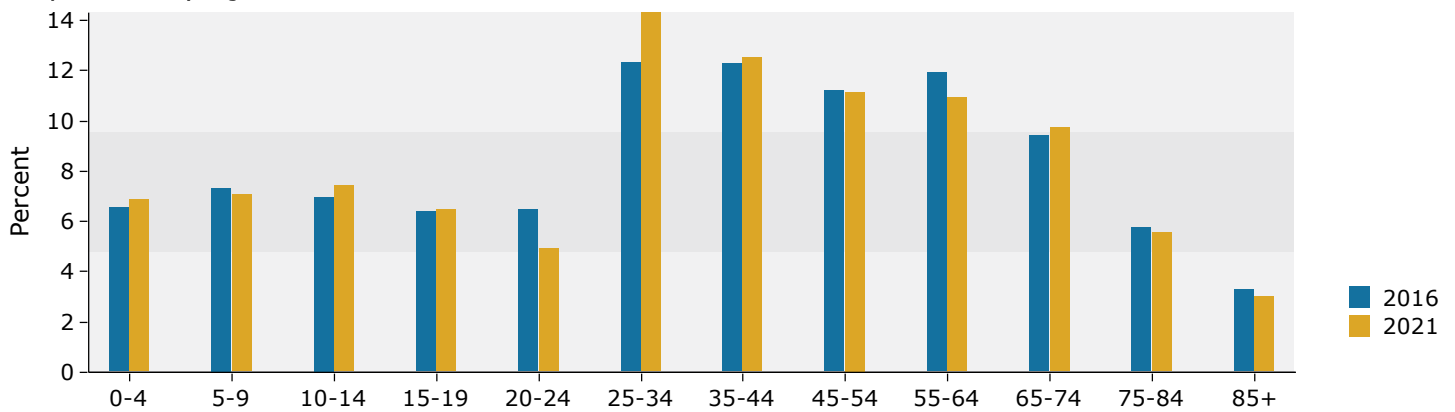
Colliers International
Latitude: 46.35810
Longitude: -94.24395

1 mile

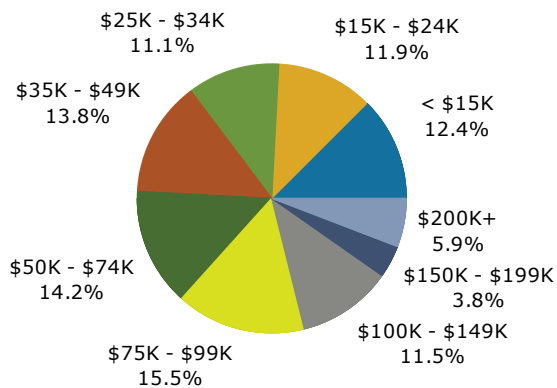
Trends 2016-2021



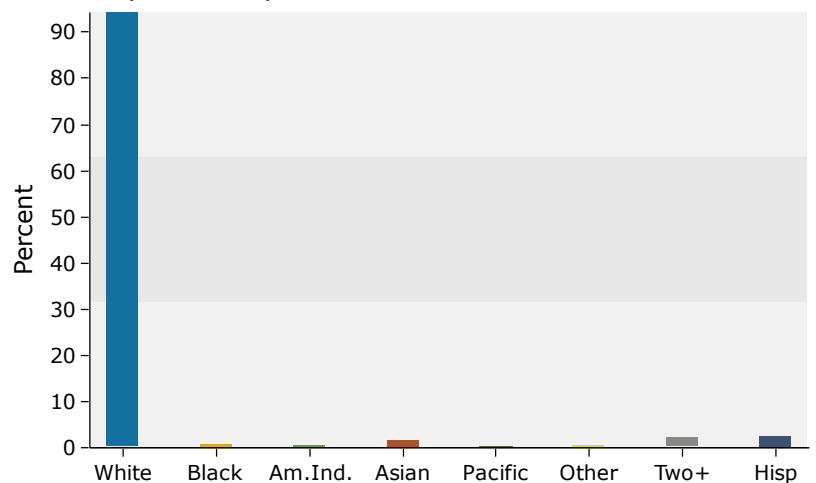
Population by Age



2016 Household Income



2016 Population by Race



Source: U.S. Census Bureau, Census 2010 Summary File 1. Esri forecasts for 2016 and 2021.

July 07, 2016



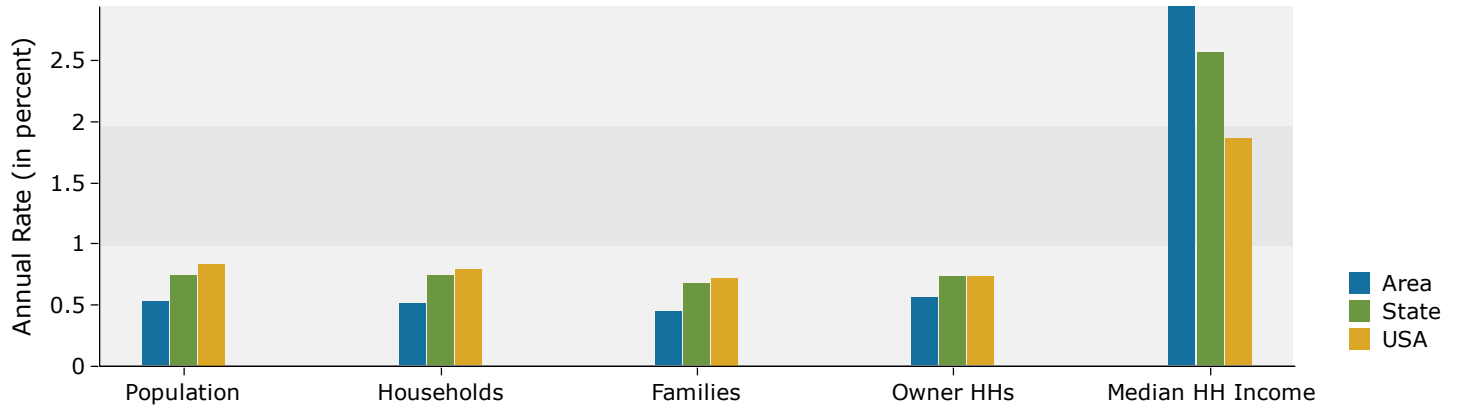
Demographic and Income Comparison Profile

14244 Dellwood Dr, Baxter, Minnesota, 56425
Rings: 1, 3, 5 mile radii

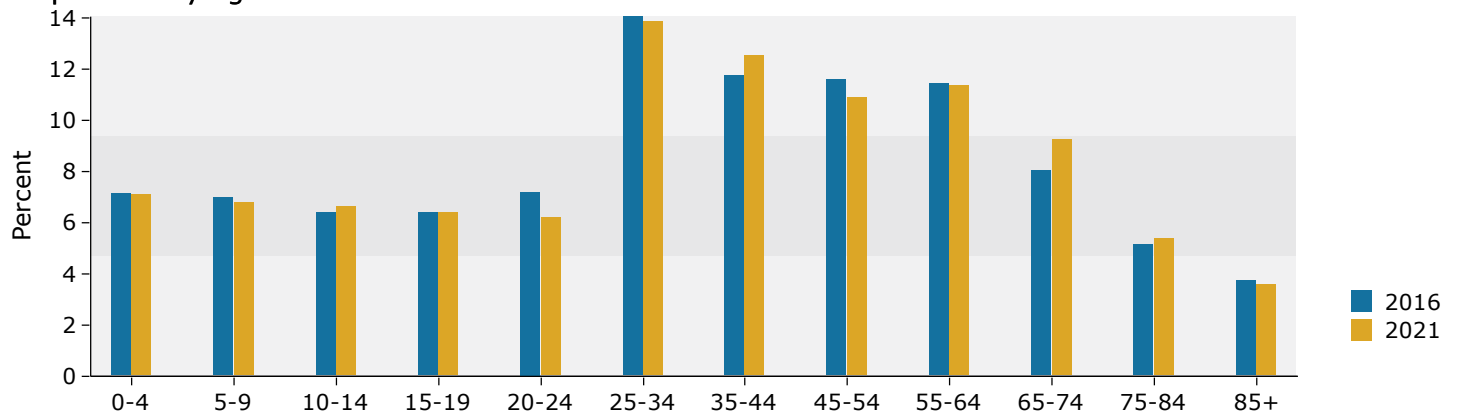
Colliers International
Latitude: 46.35810
Longitude: -94.24395

3 miles

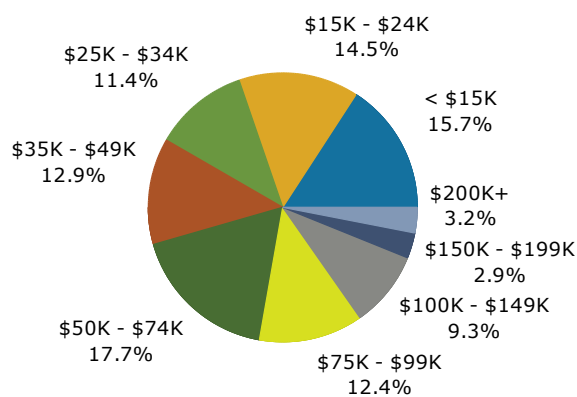
Trends 2016-2021



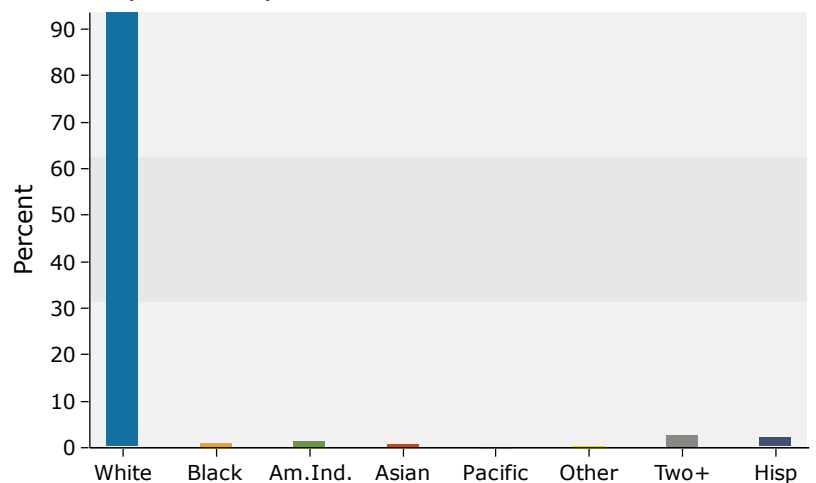
Population by Age



2016 Household Income



2016 Population by Race



Source: U.S. Census Bureau, Census 2010 Summary File 1. Esri forecasts for 2016 and 2021.

July 07, 2016



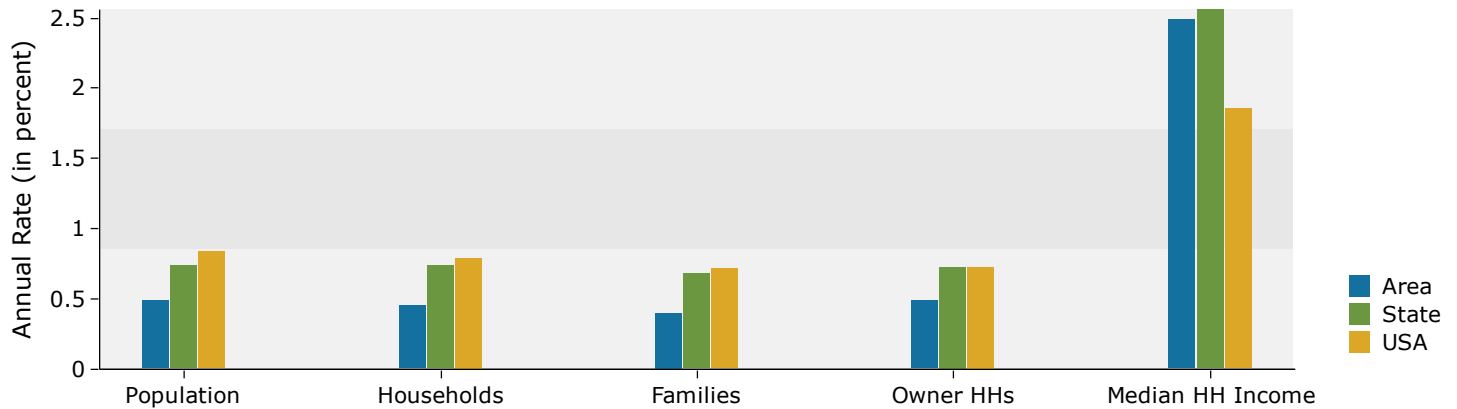
Demographic and Income Comparison Profile

14244 Dellwood Dr, Baxter, Minnesota, 56425
Rings: 1, 3, 5 mile radii

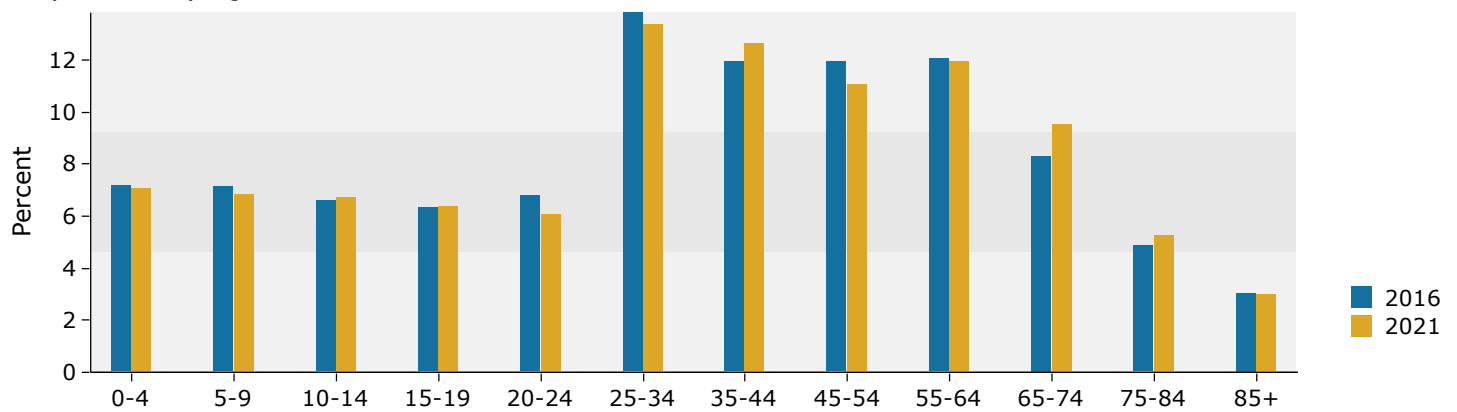
Colliers International
Latitude: 46.35810
Longitude: -94.24395

5 miles

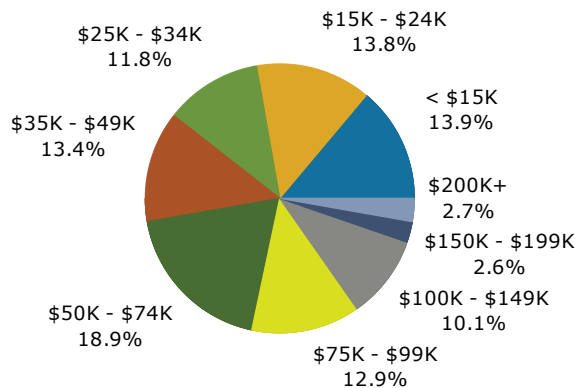
Trends 2016-2021



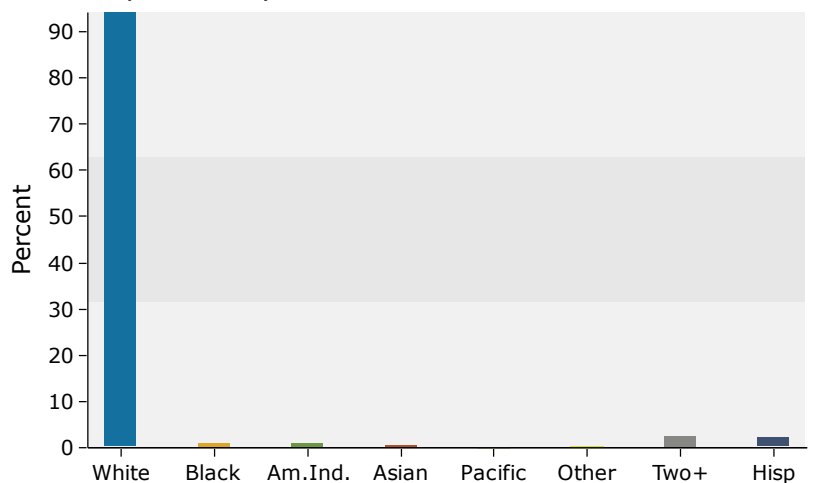
Population by Age



2016 Household Income



2016 Population by Race



Source: U.S. Census Bureau, Census 2010 Summary File 1. Esri forecasts for 2016 and 2021.

July 07, 2016

Market Profile

14244 Dellwood Dr, Baxter, Minnesota, 56425
Rings: 1, 3, 5 mile radii

Colliers International
Latitude: 46.35810
Longitude: -94.24395

	1 mile	3 miles	5 miles
Population Summary			
2000 Total Population	1,350	15,989	23,321
2010 Total Population	1,870	17,987	26,257
2016 Total Population	2,055	18,745	27,253
2016 Group Quarters	10	524	596
2020 Total Population	2,172	19,251	27,932
2016-2021 Annual Rate	1.11%	0.53%	0.49%
Household Summary			
2000 Households	585	6,430	9,200
2000 Average Household Size	2.28	2.40	2.46
2010 Households	880	7,485	10,733
2010 Average Household Size	2.11	2.33	2.39
2016 Households	966	7,775	11,109
2016 Average Household Size	2.12	2.34	2.40
2021 Households	1,020	7,974	11,369
2021 Average Household Size	2.12	2.35	2.40
2016-2021 Annual Rate	1.09%	0.51%	0.46%
2010 Families	561	4,429	6,663
2010 Average Family Size	2.65	2.96	2.96
2016 Families	612	4,572	6,852
2016 Average Family Size	2.66	2.97	2.97
2021 Families	644	4,675	6,989
2021 Average Family Size	2.66	2.97	2.98
2016-2021 Annual Rate	1.02%	0.45%	0.40%
Housing Unit Summary			
2000 Housing Units	611	6,687	9,731
Owner Occupied Housing Units	77.1%	60.8%	64.1%
Renter Occupied Housing Units	18.7%	35.3%	30.4%
Vacant Housing Units	4.3%	3.8%	5.5%
2010 Housing Units	956	8,137	11,779
Owner Occupied Housing Units	59.7%	54.8%	58.6%
Renter Occupied Housing Units	32.3%	37.2%	32.6%
Vacant Housing Units	7.9%	8.0%	8.9%
2016 Housing Units	1,049	8,491	12,234
Owner Occupied Housing Units	58.4%	53.6%	57.4%
Renter Occupied Housing Units	33.6%	38.0%	33.5%
Vacant Housing Units	7.9%	8.4%	9.2%
2021 Housing Units	1,107	8,731	12,544
Owner Occupied Housing Units	60.3%	53.6%	57.3%
Renter Occupied Housing Units	31.8%	37.7%	33.3%
Vacant Housing Units	7.9%	8.7%	9.4%
Median Household Income			
2016	\$51,094	\$43,694	\$45,995
2021	\$56,790	\$50,500	\$52,018
Median Home Value			
2016	\$184,225	\$168,404	\$168,564
2021	\$206,000	\$187,830	\$191,598
Per Capita Income			
2016	\$31,131	\$25,892	\$25,484
2021	\$34,263	\$28,383	\$27,918
Median Age			
2010	37.3	35.4	35.6
2016	38.2	36.4	36.7
2021	37.2	37.3	37.6

Data Note: Household population includes persons not residing in group quarters. Average Household Size is the household population divided by total households. Persons in families include the householder and persons related to the householder by birth, marriage, or adoption. Per Capita Income represents the income received by all persons aged 15 years and over divided by the total population.

Source: U.S. Census Bureau, Census 2010 Summary File 1. Esri forecasts for 2016 and 2021 Esri converted Census 2000 data into 2010 geography.

July 07, 2016



Market Profile

14244 Dellwood Dr, Baxter, Minnesota, 56425
Rings: 1, 3, 5 mile radii

Colliers International
Latitude: 46.35810
Longitude: -94.24395

	1 mile	3 miles	5 miles
2016 Households by Income			
Household Income Base	966	7,775	11,109
<\$15,000	12.4%	15.7%	13.9%
\$15,000 - \$24,999	11.9%	14.5%	13.8%
\$25,000 - \$34,999	11.1%	11.4%	11.8%
\$35,000 - \$49,999	13.8%	12.9%	13.4%
\$50,000 - \$74,999	14.2%	17.7%	18.9%
\$75,000 - \$99,999	15.5%	12.4%	12.9%
\$100,000 - \$149,999	11.5%	9.3%	10.1%
\$150,000 - \$199,999	3.8%	2.9%	2.6%
\$200,000+	5.9%	3.2%	2.7%
Average Household Income	\$75,026	\$62,045	\$62,031
2021 Households by Income			
Household Income Base	1,020	7,974	11,369
<\$15,000	12.1%	15.5%	13.7%
\$15,000 - \$24,999	10.9%	13.3%	12.8%
\$25,000 - \$34,999	12.9%	11.6%	12.1%
\$35,000 - \$49,999	9.9%	9.1%	9.1%
\$50,000 - \$74,999	12.5%	18.4%	19.5%
\$75,000 - \$99,999	15.5%	13.5%	14.1%
\$100,000 - \$149,999	14.7%	11.4%	12.4%
\$150,000 - \$199,999	5.3%	3.8%	3.4%
\$200,000+	6.4%	3.4%	2.9%
Average Household Income	\$82,635	\$68,224	\$68,119
2016 Owner Occupied Housing Units by Value			
Total	613	4,550	7,017
<\$50,000	4.6%	6.1%	6.6%
\$50,000 - \$99,999	6.7%	11.5%	12.8%
\$100,000 - \$149,999	17.9%	23.2%	22.3%
\$150,000 - \$199,999	30.5%	25.0%	22.5%
\$200,000 - \$249,999	10.8%	13.7%	14.1%
\$250,000 - \$299,999	6.4%	5.3%	5.7%
\$300,000 - \$399,999	7.0%	5.6%	6.5%
\$400,000 - \$499,999	9.3%	4.9%	4.7%
\$500,000 - \$749,999	4.1%	3.0%	3.0%
\$750,000 - \$999,999	1.1%	0.9%	1.3%
\$1,000,000 +	1.8%	0.6%	0.5%
Average Home Value	\$247,598	\$205,372	\$206,829
2021 Owner Occupied Housing Units by Value			
Total	668	4,680	7,192
<\$50,000	2.8%	4.6%	4.8%
\$50,000 - \$99,999	4.2%	9.0%	9.8%
\$100,000 - \$149,999	11.7%	18.1%	17.0%
\$150,000 - \$199,999	29.3%	24.3%	22.1%
\$200,000 - \$249,999	15.0%	18.7%	19.3%
\$250,000 - \$299,999	9.1%	7.5%	8.0%
\$300,000 - \$399,999	8.5%	6.9%	7.8%
\$400,000 - \$499,999	10.6%	5.7%	5.4%
\$500,000 - \$749,999	4.2%	3.1%	3.2%
\$750,000 - \$999,999	1.5%	1.3%	1.9%
\$1,000,000 +	2.7%	0.9%	0.7%
Average Home Value	\$280,105	\$227,644	\$230,784

Data Note: Income represents the preceding year, expressed in current dollars. Household income includes wage and salary earnings, interest dividends, net rents, pensions, SSI and welfare payments, child support, and alimony.

Source: U.S. Census Bureau, Census 2010 Summary File 1. Esri forecasts for 2016 and 2021 Esri converted Census 2000 data into 2010 geography.

July 07, 2016



Market Profile

14244 Dellwood Dr, Baxter, Minnesota, 56425
Rings: 1, 3, 5 mile radii

Colliers International
Latitude: 46.35810
Longitude: -94.24395

	1 mile	3 miles	5 miles
2010 Population by Age			
Total	1,867	17,988	26,257
0 - 4	6.9%	7.6%	7.6%
5 - 9	7.8%	7.0%	7.2%
10 - 14	7.2%	6.4%	6.5%
15 - 24	13.7%	14.9%	14.0%
25 - 34	11.6%	13.8%	13.9%
35 - 44	13.0%	11.6%	11.7%
45 - 54	12.1%	12.7%	13.2%
55 - 64	11.2%	10.6%	10.9%
65 - 74	7.8%	6.5%	6.8%
75 - 84	5.8%	5.4%	5.0%
85 +	3.2%	3.7%	3.0%
18 +	73.7%	75.1%	74.7%
2016 Population by Age			
Total	2,054	18,747	27,252
0 - 4	6.6%	7.1%	7.2%
5 - 9	7.4%	7.0%	7.1%
10 - 14	7.0%	6.4%	6.6%
15 - 24	12.9%	13.6%	13.1%
25 - 34	12.3%	14.0%	13.8%
35 - 44	12.3%	11.8%	11.9%
45 - 54	11.2%	11.6%	11.9%
55 - 64	11.9%	11.4%	12.0%
65 - 74	9.4%	8.1%	8.3%
75 - 84	5.7%	5.2%	4.9%
85 +	3.3%	3.7%	3.1%
18 +	74.9%	75.9%	75.5%
2021 Population by Age			
Total	2,173	19,251	27,933
0 - 4	6.9%	7.1%	7.1%
5 - 9	7.1%	6.8%	6.9%
10 - 14	7.5%	6.7%	6.8%
15 - 24	11.4%	12.6%	12.4%
25 - 34	14.3%	13.8%	13.4%
35 - 44	12.5%	12.5%	12.7%
45 - 54	11.1%	10.9%	11.1%
55 - 64	11.0%	11.3%	12.0%
65 - 74	9.7%	9.3%	9.5%
75 - 84	5.6%	5.4%	5.2%
85 +	3.0%	3.6%	3.0%
18 +	74.2%	75.8%	75.6%
2010 Population by Sex			
Males	897	8,662	12,746
Females	973	9,325	13,511
2016 Population by Sex			
Males	990	9,070	13,290
Females	1,066	9,675	13,963
2021 Population by Sex			
Males	1,048	9,344	13,674
Females	1,124	9,907	14,258

Source: U.S. Census Bureau, Census 2010 Summary File 1. Esri forecasts for 2016 and 2021 Esri converted Census 2000 data into 2010 geography.

July 07, 2016



Market Profile

14244 Dellwood Dr, Baxter, Minnesota, 56425
Rings: 1, 3, 5 mile radii

Colliers International
Latitude: 46.35810
Longitude: -94.24395

	1 mile	3 miles	5 miles
2010 Population by Race/Ethnicity			
Total	1,869	17,987	26,257
White Alone	95.6%	94.7%	95.2%
Black Alone	0.5%	0.9%	0.8%
American Indian Alone	0.4%	1.2%	1.1%
Asian Alone	1.2%	0.6%	0.5%
Pacific Islander Alone	0.1%	0.0%	0.0%
Some Other Race Alone	0.3%	0.3%	0.3%
Two or More Races	1.9%	2.3%	2.1%
Hispanic Origin	1.6%	1.5%	1.4%
Diversity Index	11.6	13.0	11.9
2016 Population by Race/Ethnicity			
Total	2,055	18,745	27,253
White Alone	94.3%	93.6%	94.2%
Black Alone	0.7%	1.1%	1.0%
American Indian Alone	0.5%	1.3%	1.2%
Asian Alone	1.6%	0.8%	0.6%
Pacific Islander Alone	0.1%	0.1%	0.0%
Some Other Race Alone	0.5%	0.4%	0.4%
Two or More Races	2.3%	2.8%	2.6%
Hispanic Origin	2.5%	2.3%	2.1%
Diversity Index	15.4	16.2	15.0
2021 Population by Race/Ethnicity			
Total	2,172	19,250	27,933
White Alone	93.1%	92.5%	93.2%
Black Alone	0.9%	1.3%	1.2%
American Indian Alone	0.6%	1.4%	1.3%
Asian Alone	1.8%	0.9%	0.8%
Pacific Islander Alone	0.2%	0.1%	0.1%
Some Other Race Alone	0.6%	0.5%	0.5%
Two or More Races	2.8%	3.3%	3.1%
Hispanic Origin	3.2%	3.0%	2.8%
Diversity Index	18.6	19.3	17.8
2010 Population by Relationship and Household Type			
Total	1,870	17,987	26,257
In Households	99.5%	97.1%	97.7%
In Family Households	81.8%	75.8%	78.2%
Householder	26.4%	24.6%	25.3%
Spouse	20.8%	17.8%	18.5%
Child	30.9%	29.0%	29.8%
Other relative	1.6%	1.5%	1.6%
Nonrelative	2.2%	2.9%	3.0%
In Nonfamily Households	17.6%	21.3%	19.5%
In Group Quarters	0.5%	2.9%	2.3%
Institutionalized Population	0.1%	2.0%	1.4%
Noninstitutionalized Population	0.4%	0.9%	0.9%

Data Note: Persons of Hispanic Origin may be of any race. The Diversity Index measures the probability that two people from the same area will be from different race/ethnic groups.

Source: U.S. Census Bureau, Census 2010 Summary File 1. Esri forecasts for 2016 and 2021 Esri converted Census 2000 data into 2010 geography.

July 07, 2016



Market Profile

14244 Dellwood Dr, Baxter, Minnesota, 56425
Rings: 1, 3, 5 mile radii

Colliers International
Latitude: 46.35810
Longitude: -94.24395

	1 mile	3 miles	5 miles
2016 Population 25+ by Educational Attainment			
Total	1,362	12,339	17,984
Less than 9th Grade	1.8%	2.8%	2.4%
9th - 12th Grade, No Diploma	3.7%	4.7%	4.6%
High School Graduate	22.9%	22.9%	23.3%
GED/Alternative Credential	3.3%	3.8%	4.2%
Some College, No Degree	26.2%	26.3%	26.7%
Associate Degree	13.6%	13.7%	13.7%
Bachelor's Degree	18.4%	17.5%	17.0%
Graduate/Professional Degree	10.1%	8.2%	8.2%
2016 Population 15+ by Marital Status			
Total	1,628	14,891	21,564
Never Married	35.6%	32.1%	31.2%
Married	44.1%	47.7%	49.7%
Widowed	6.3%	7.5%	6.8%
Divorced	14.1%	12.7%	12.3%
2016 Civilian Population 16+ in Labor Force			
Civilian Employed	97.4%	96.0%	96.1%
Civilian Unemployed	2.6%	4.0%	3.9%
2016 Employed Population 16+ by Industry			
Total	1,084	8,985	13,279
Agriculture/Mining	3.5%	1.7%	1.6%
Construction	4.7%	6.2%	6.1%
Manufacturing	6.7%	8.2%	8.4%
Wholesale Trade	2.4%	2.3%	2.2%
Retail Trade	20.2%	13.5%	14.3%
Transportation/Utilities	4.8%	3.7%	4.5%
Information	1.8%	2.1%	1.9%
Finance/Insurance/Real Estate	5.6%	6.3%	6.0%
Services	46.1%	51.5%	50.8%
Public Administration	4.1%	4.5%	4.1%
2016 Employed Population 16+ by Occupation			
Total	1,083	8,985	13,279
White Collar	60.6%	60.9%	60.4%
Management/Business/Financial	9.4%	12.4%	11.8%
Professional	21.5%	22.1%	21.4%
Sales	17.3%	12.0%	11.3%
Administrative Support	12.4%	14.5%	15.9%
Services	21.3%	18.8%	18.3%
Blue Collar	18.0%	20.2%	21.3%
Farming/Forestry/Fishing	0.1%	0.6%	0.7%
Construction/Extraction	6.1%	6.6%	5.9%
Installation/Maintenance/Repair	1.8%	2.6%	3.1%
Production	5.6%	6.0%	6.2%
Transportation/Material Moving	4.4%	4.3%	5.4%
2010 Population By Urban/ Rural Status			
Total Population	1,870	17,987	26,257
Population Inside Urbanized Area	0.0%	0.0%	0.0%
Population Inside Urbanized Cluster	89.1%	82.8%	74.3%
Rural Population	10.9%	17.2%	25.7%

Source: U.S. Census Bureau, Census 2010 Summary File 1. Esri forecasts for 2016 and 2021 Esri converted Census 2000 data into 2010 geography.

July 07, 2016

Market Profile

14244 Dellwood Dr, Baxter, Minnesota, 56425
Rings: 1, 3, 5 mile radii

Colliers International
Latitude: 46.35810
Longitude: -94.24395

	1 mile	3 miles	5 miles
2010 Households by Type			
Total	880	7,485	10,733
Households with 1 Person	30.0%	32.9%	30.3%
Households with 2+ People	70.0%	67.1%	69.7%
Family Households	63.8%	59.2%	62.1%
Husband-wife Families	50.2%	43.0%	45.4%
With Related Children	22.7%	19.0%	19.7%
Other Family (No Spouse Present)	13.5%	16.2%	16.7%
Other Family with Male Householder	4.7%	4.5%	4.8%
With Related Children	2.7%	3.3%	3.5%
Other Family with Female Householder	8.9%	11.6%	11.9%
With Related Children	6.6%	8.7%	8.7%
Nonfamily Households	6.3%	7.9%	7.6%
All Households with Children	32.5%	31.5%	32.5%
Multigenerational Households	1.6%	1.5%	1.7%
Unmarried Partner Households	7.5%	8.7%	9.0%
Male-female	7.3%	8.2%	8.6%
Same-sex	0.2%	0.4%	0.4%
2010 Households by Size			
Total	880	7,485	10,733
1 Person Household	30.0%	32.9%	30.3%
2 Person Household	33.8%	32.9%	34.0%
3 Person Household	14.8%	14.0%	14.5%
4 Person Household	12.6%	12.1%	12.6%
5 Person Household	5.8%	5.3%	5.7%
6 Person Household	2.0%	2.0%	2.1%
7 + Person Household	1.0%	0.8%	0.8%
2010 Households by Tenure and Mortgage Status			
Total	880	7,485	10,733
Owner Occupied	64.9%	59.5%	64.3%
Owned with a Mortgage/Loan	47.7%	42.8%	46.3%
Owned Free and Clear	17.2%	16.8%	17.9%
Renter Occupied	35.1%	40.5%	35.7%
2010 Housing Units By Urban/ Rural Status			
Total Housing Units	956	8,137	11,779
Housing Units Inside Urbanized Area	0.0%	0.0%	0.0%
Housing Units Inside Urbanized Cluster	87.0%	83.4%	74.9%
Rural Housing Units	13.0%	16.6%	25.1%

Data Note: Households with children include any households with people under age 18, related or not. Multigenerational households are families with 3 or more parent-child relationships. Unmarried partner households are usually classified as nonfamily households unless there is another member of the household related to the householder. Multigenerational and unmarried partner households are reported only to the tract level. Esri estimated block group data, which is used to estimate polygons or non-standard geography.

Source: U.S. Census Bureau, Census 2010 Summary File 1. Esri forecasts for 2016 and 2021 Esri converted Census 2000 data into 2010 geography.



Market Profile

14244 Dellwood Dr, Baxter, Minnesota, 56425
Rings: 1, 3, 5 mile radii

Colliers International
Latitude: 46.35810
Longitude: -94.24395

	1 mile	3 miles	5 miles
Top 3 Tapestry Segments			
1.	Middleburg (4C)	Middleburg (4C)	Middleburg (4C)
2.	Small Town Simplicity	Old and Newcomers (8F)	Green Acres (6A)
3.	Top Tier (1A)	Green Acres (6A)	Old and Newcomers (8F)
2016 Consumer Spending			
Apparel & Services: Total \$	\$1,877,994	\$12,731,100	\$18,036,702
Average Spent	\$1,944.09	\$1,637.44	\$1,623.61
Spending Potential Index	97	81	81
Education: Total \$	\$1,182,531	\$8,572,498	\$12,183,910
Average Spent	\$1,224.15	\$1,102.57	\$1,096.76
Spending Potential Index	87	78	78
Entertainment/Recreation: Total \$	\$2,771,769	\$18,452,723	\$26,406,516
Average Spent	\$2,869.33	\$2,373.34	\$2,377.04
Spending Potential Index	98	81	82
Food at Home: Total \$	\$4,735,497	\$32,720,292	\$46,553,988
Average Spent	\$4,902.17	\$4,208.40	\$4,190.66
Spending Potential Index	98	84	84
Food Away from Home: Total \$	\$2,963,276	\$19,850,607	\$28,157,644
Average Spent	\$3,067.57	\$2,553.13	\$2,534.67
Spending Potential Index	99	83	82
Health Care: Total \$	\$5,087,542	\$33,826,253	\$48,814,296
Average Spent	\$5,266.61	\$4,350.64	\$4,394.12
Spending Potential Index	99	82	83
HH Furnishings & Equipment: Total \$	\$1,684,743	\$11,153,839	\$15,933,038
Average Spent	\$1,744.04	\$1,434.58	\$1,434.25
Spending Potential Index	99	81	81
Personal Care Products & Services: Total \$	\$684,637	\$4,611,483	\$6,570,721
Average Spent	\$708.73	\$593.12	\$591.48
Spending Potential Index	97	81	81
Shelter: Total \$	\$14,238,525	\$98,173,966	\$138,707,102
Average Spent	\$14,739.67	\$12,626.88	\$12,486.01
Spending Potential Index	95	81	80
Support Payments/Cash Contributions/Gifts in Kind: Total \$	\$2,222,242	\$14,672,204	\$21,130,162
Average Spent	\$2,300.46	\$1,887.10	\$1,902.08
Spending Potential Index	99	81	82
Travel: Total \$	\$1,695,634	\$11,085,736	\$15,969,878
Average Spent	\$1,755.31	\$1,425.82	\$1,437.56
Spending Potential Index	94	77	77
Vehicle Maintenance & Repairs: Total \$	\$986,046	\$6,635,200	\$9,512,870
Average Spent	\$1,020.75	\$853.40	\$856.32
Spending Potential Index	99	82	83

Data Note: Consumer spending shows the amount spent on a variety of goods and services by households that reside in the area. Expenditures are shown by broad budget categories that are not mutually exclusive. Consumer spending does not equal business revenue. Total and Average Amount Spent Per Household represent annual figures. The Spending Potential Index represents the amount spent in the area relative to a national average of 100.

Source: Consumer Spending data are derived from the 2013 and 2014 Consumer Expenditure Surveys, Bureau of Labor Statistics. Esri.

Source: U.S. Census Bureau, Census 2010 Summary File 1. Esri forecasts for 2016 and 2021 Esri converted Census 2000 data into 2010 geography.

July 07, 2016