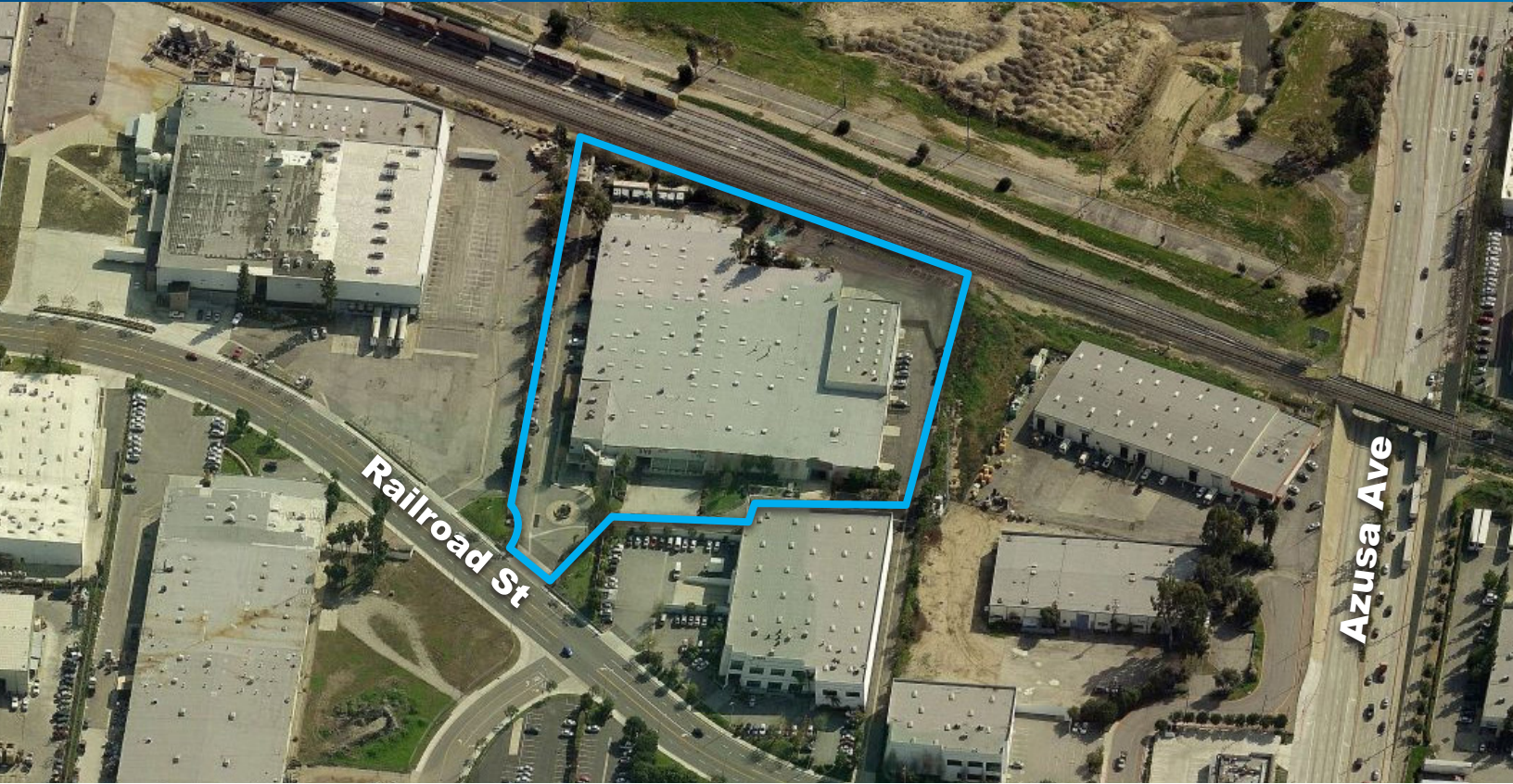


FOR LEASE > ±7,104 - 11,766 SQUARE FEET

17300 RAILROAD STREET

CITY OF INDUSTRY, CALIFORNIA



Property Highlights:

- > Large Office with Showrooms, Multiple Configurations Possible
- > Dock High Loading Positions Available
- > Central City of Industry Location
- > Direct Access to 60 Freeway via Azusa Avenue

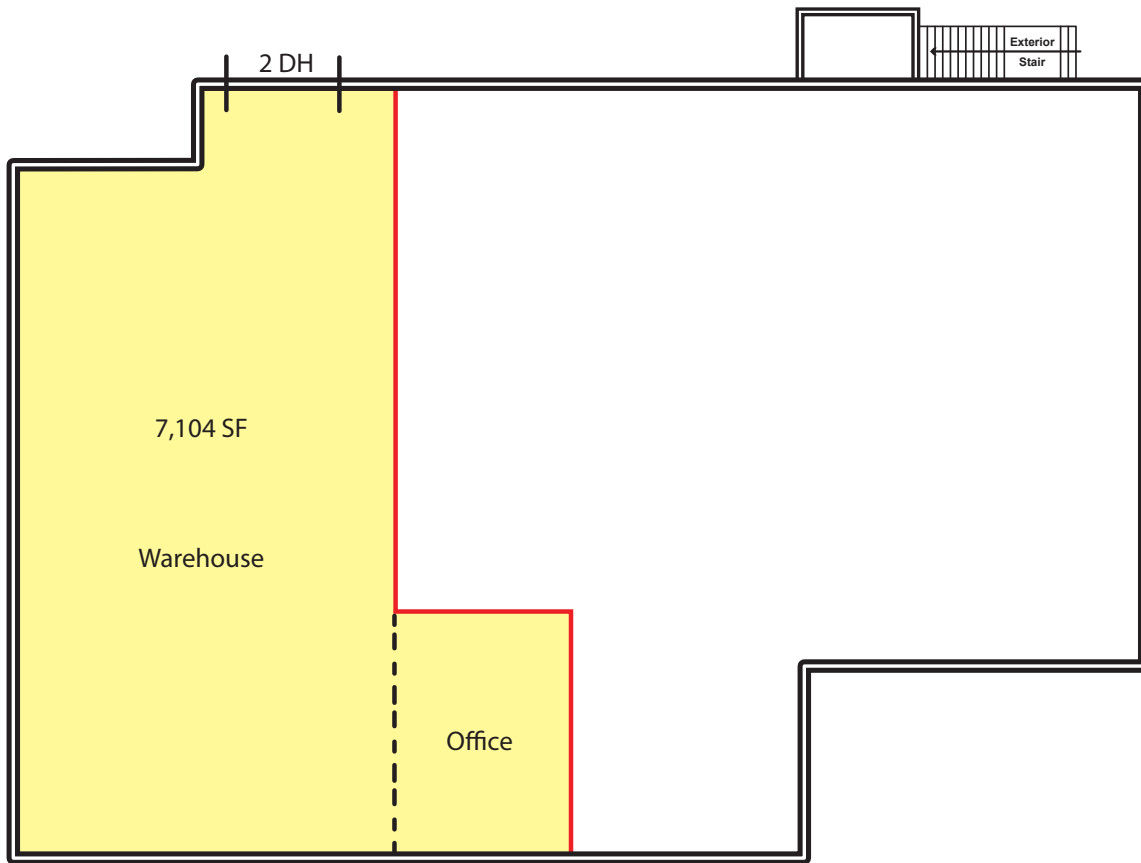


TONY T. PHU
Executive Vice President
License No. 01129178
626 283 4560
tony.phu@colliers.com

COLLIERS INTERNATIONAL
17800 Castleton St
Suite 495
City of Industry, CA
www.colliers.com

FOR LEASE > ±7,104 SF

17300 RAILROAD STREET | CITY OF INDUSTRY



DIVISIBLE SIZES	RENTAL RATE/SF	FEATURES
±7,104 SF	\$0.78 G	2 Dock High Loading Doors
±11,640 SF	\$0.88 G	2 Dock High Loading Doors , Office/Showroom
±10,766 SF	\$0.88 G	2 Dock High Loading Doors , Office/Showroom

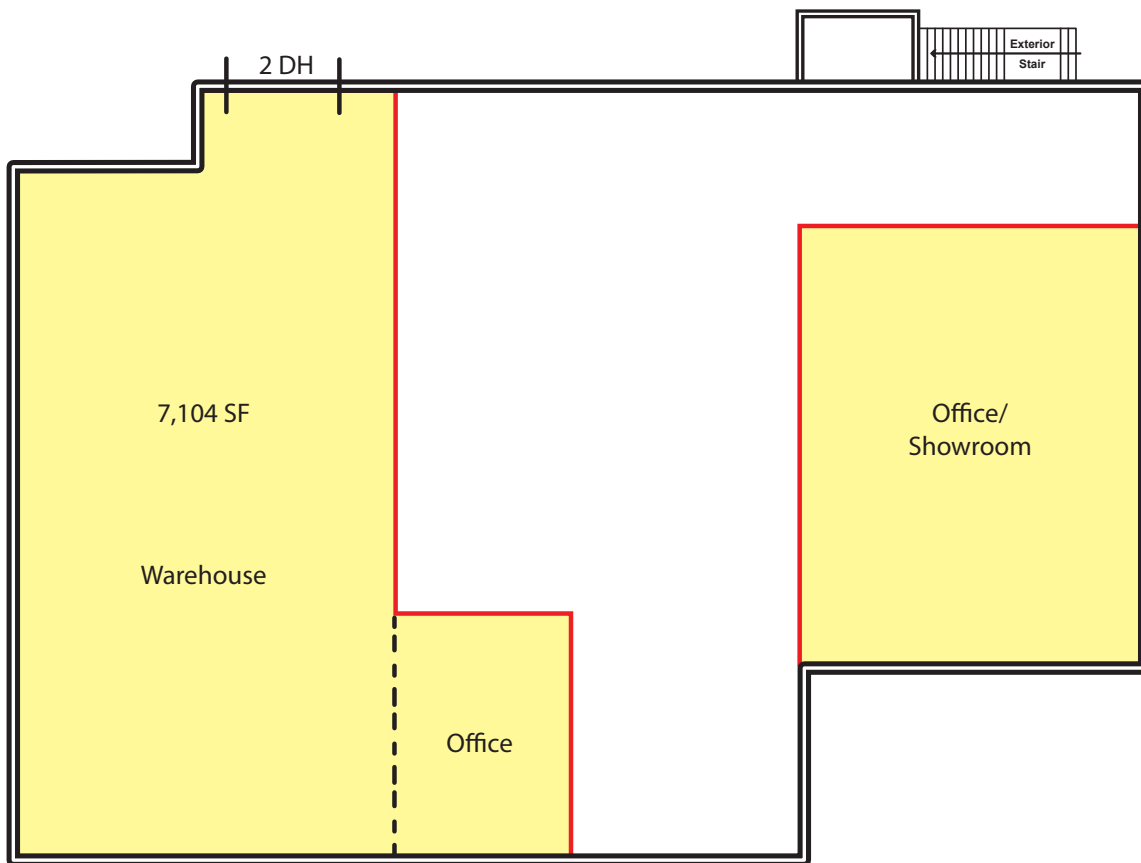
Tony T. Phu
Executive Vice President
License No. 01129178
626 283 4560
tony.phu@colliers.com

COLLIERS INTERNATIONAL
17800 Castleton Street
Suite 495
City of Industry, CA 91748
www.colliers.com



FOR LEASE > ±11,640 SF

17300 RAILROAD STREET | CITY OF INDUSTRY



DIVISIBLE SIZES	RENTAL RATE/SF	FEATURES
±7,104 SF	\$0.78 G	2 Dock High Loading Doors
±11,640 SF	\$0.88 G	2 Dock High Loading Doors, Office/Showroom
±10,766 SF	\$0.88 G	2 Dock High Loading Doors, Office/Showroom

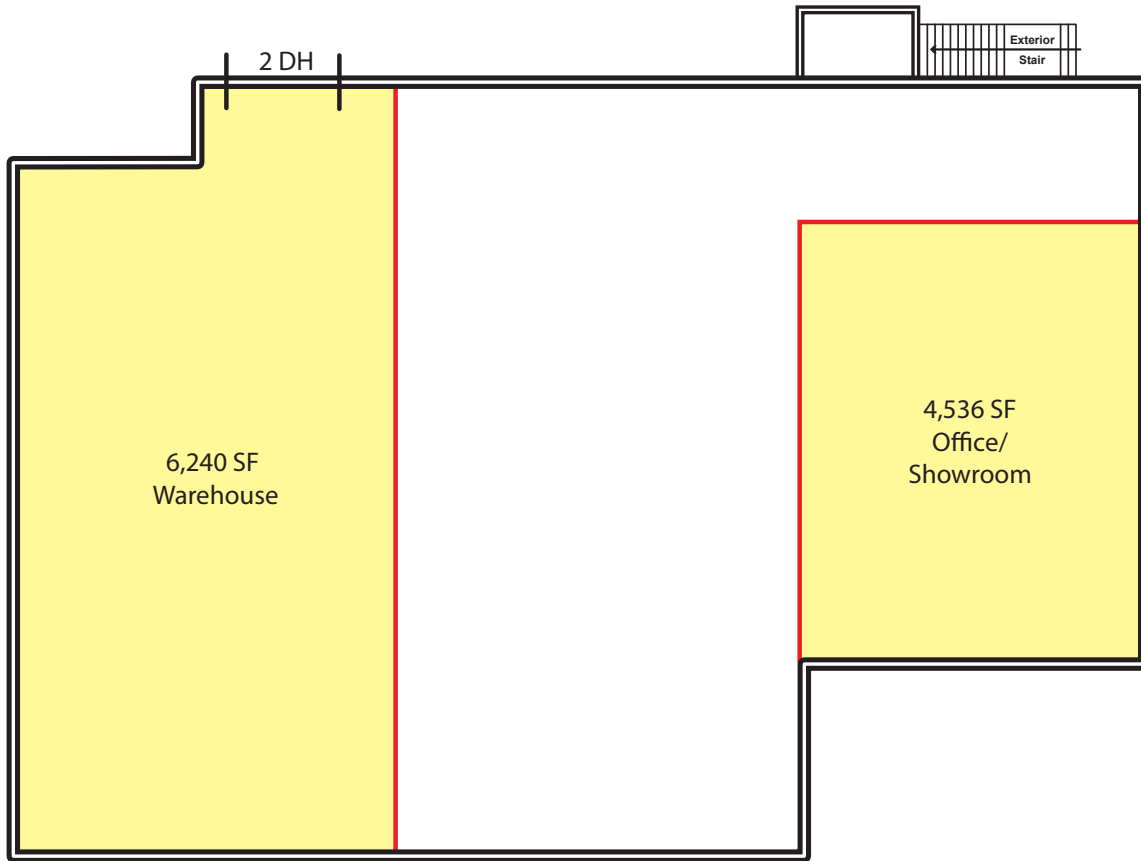
Tony T. Phu
Executive Vice President
License No. 01129178
626 283 4560
tony.phu@colliers.com

COLLIERS INTERNATIONAL
17800 Castleton Street
Suite 495
City of Industry, CA 91748
www.colliers.com



FOR LEASE > ±11,766 SF

17300 RAILROAD STREET | CITY OF INDUSTRY



DIVISIBLE SIZES	RENTAL RATE/SF	FEATURES
±7,104 SF	\$0.78 G	2 Dock High Loading Doors
±11,640 SF	\$0.88 G	2 Dock High Loading Doors, Office/Showroom
±10,766 SF	\$0.88 G	2 Dock High Loading Doors, Office/Showroom

Tony T. Phu
Executive Vice President
License No. 01129178
626 283 4560
tony.phu@colliers.com

COLLIERS INTERNATIONAL
17800 Castleton Street
Suite 495
City of Industry, CA 91748
www.colliers.com

