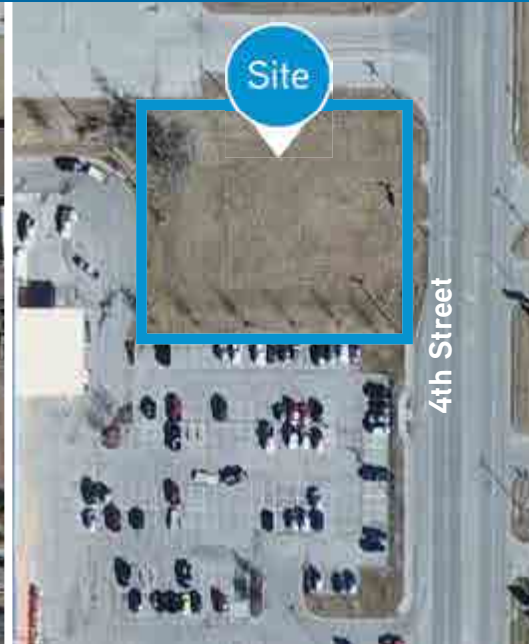


FOR SALE > COMMERCIAL LAND

# 4900 S. 4th Street

LEAVENWORTH, KANSAS



## Property Highlights

- > 1/2 acre
- > Ideal for retail build-to-suit
- > Nearby tenants include: Home Depot, Payless Shoe Source, Kmart, O'Reilly Auto Mart and many more
- > Zoned GBD – General Business District
- > Located on U.S. Highway 73
- > Over 21,000 cars per day on 4th Street
- > Sale price: \$250,000

## Demographics

	1	3	5
Daytime Population	7,599	28,326	45,333
Average HHI	\$82,734	\$78,512	\$73,868

## Contact Us

TOM KENNEDY  
+1 816 556 1118  
KANSAS CITY, MO  
[tom.kennedy@colliers.com](mailto:tom.kennedy@colliers.com)

This document has been prepared by Colliers International for advertising and general information only. Colliers International makes no guarantees, representations or warranties of any kind, expressed or implied, regarding the information including, but not limited to, warranties of content, accuracy and reliability. Any interested party should undertake their own inquiries as to the accuracy of the information. Colliers International excludes unequivocally all inferred or implied terms, conditions and warranties arising out of this document and excludes all liability for loss and damages arising there from. This publication is the copyrighted property of Colliers International and/or its licensor(s). © 2016. All rights reserved.

COLLIERS INTERNATIONAL  
4520 Main Street, Suite 1000  
Kansas City, MO 64111  
[www.colliers.com](http://www.colliers.com)