



FOUNTAIN VALLEY

MEDICAL + CENTER



➤ MEDICAL OFFICE SPACE FOR LEASE
On-Campus at Fountain Valley Regional Hospital
11190 Warner Ave. • Fountain Valley

FOR MORE DETAILS, CONTACT:

JOHN WADSWORTH

Senior Vice President | Irvine
Healthcare Services
License No. 01177404
949 724 5528
john.wadsworth@colliers.com

AARON PHILLIPS

Senior Associate | Irvine
Healthcare Services
License No. 01769480
949 724 5562
aaron.phillips@colliers.com

Colliers International makes no guarantees, representations or warranties of any kind, expressed or implied, regarding the information including, but not limited to, warranties of content, accuracy and reliability. This publication is the copyrighted property of Colliers International and /or its licensor(s). 2015. All rights reserved. Information contained herein does not constitute a legal offer or acceptance and shall not be legally binding, but shall serve as the basis for negotiation and execution of a mutually acceptable Lease Agreement.

Fountain Valley Medical Center
11190 Warner Ave. • Fountain Valley

BUILDING FEATURES

- › 71,424 SF, four-story medical office building
- › Located on the campus of Fountain Valley Regional Hospital
- › Medical space available from 1,089 SF to 3,548 SF
- › Free surface parking
- › Strong in-place mix roster of healthcare specialties = “built-in” referral sources for new tenants
- › Pharmacy and full service lab on-site
- › Custom suite build-out available
- › Easy access to 405 freeway via Euclid Ave.
- › Professionally owned and managed by Healthcare Realty

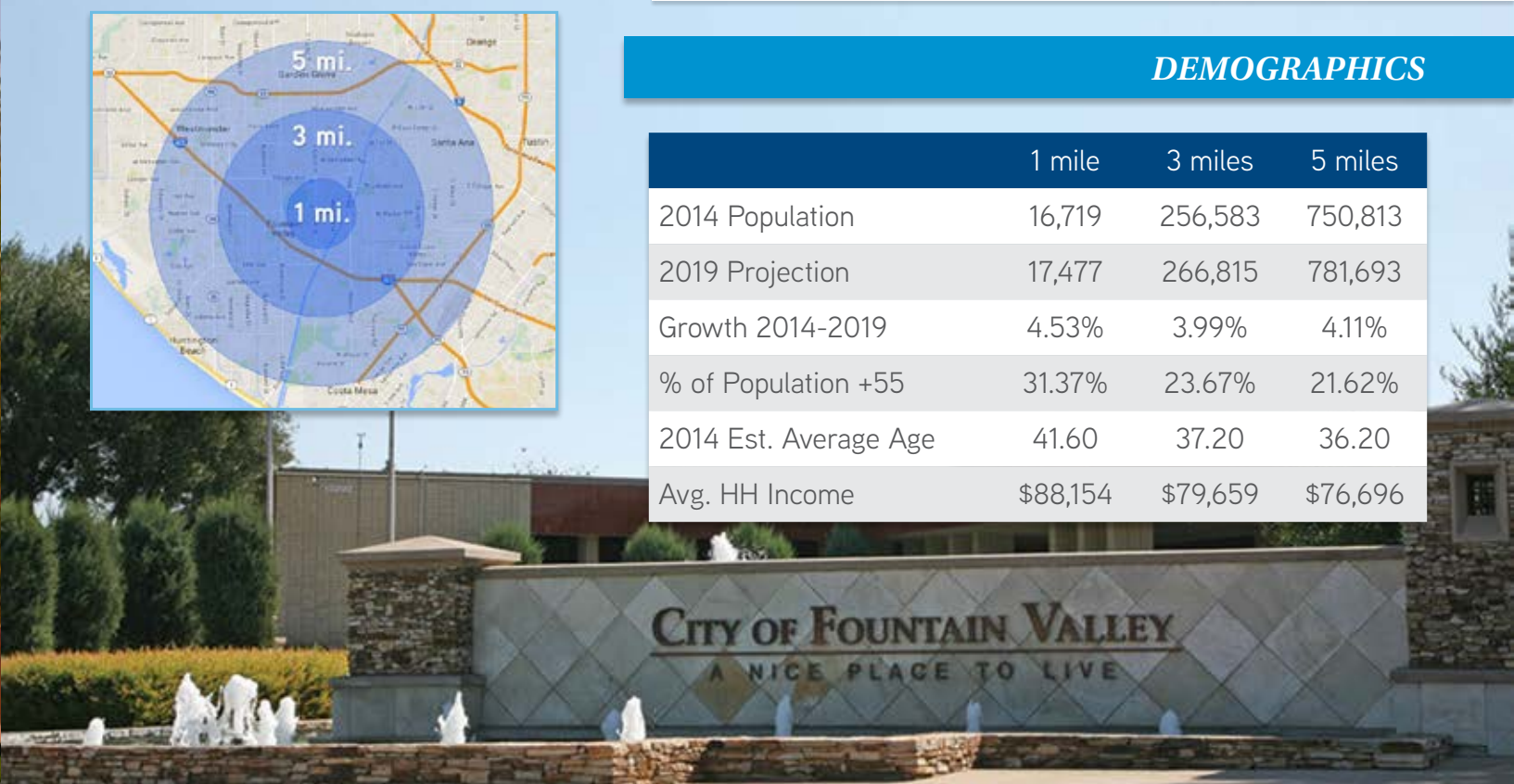


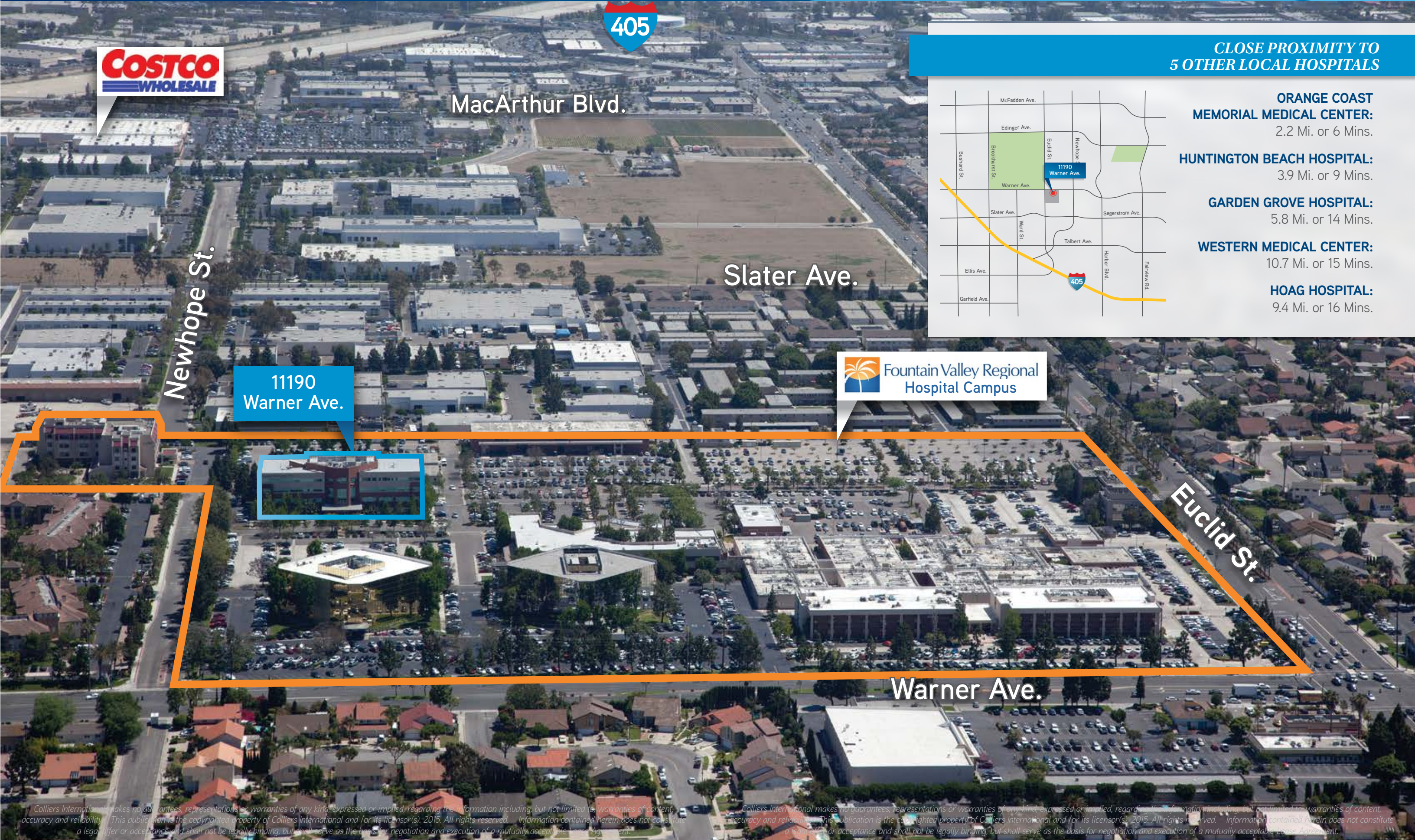
Opened in 1971, Fountain Valley Regional Hospital (FVRH) celebrated its 43 year anniversary in 2014 serving the community of Fountain Valley and surrounding cities. FVRH originally opened as a physician run hospital and now is owned and operated by Tenet Healthcare, a leading provider of healthcare in the US. FVRH is a **413-bed**, acute care hospital offering the full spectrum of medical services from a full service emergency department to award winning cardiology care, a comprehensive cancer center, pediatrics and neonatal services including a level III neonatal ICU, OC Institute for orthopedics, imaging and wound care to bariatrics and weight loss. Six medical office buildings are located on the campus of FVRH populated by physician tenants providing a wide range of comprehensive out-patient services, primary and specialty care and wellness programs.

As of 2013, FVRH is the largest employer in the city of Fountain Valley with over 1700 physicians and staff members further reinforcing its commitment to provide quality care to the surrounding community.

DEMOGRAPHICS

	1 mile	3 miles	5 miles
2014 Population	16,719	256,583	750,813
2019 Projection	17,477	266,815	781,693
Growth 2014-2019	4.53%	3.99%	4.11%
% of Population +55	31.37%	23.67%	21.62%
2014 Est. Average Age	41.60	37.20	36.20
Avg. HH Income	\$88,154	\$79,659	\$76,696





MacArthur Blvd.

Slater Ave.

Newhope St.

11190 Warner Ave.



Euclid St.

Warner Ave.

CLOSE PROXIMITY TO
5 OTHER LOCAL HOSPITALS

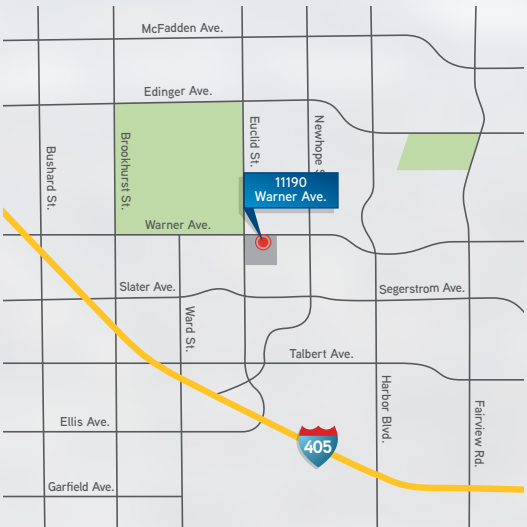
ORANGE COAST
MEMORIAL MEDICAL CENTER:
2.2 Mi. or 6 Mins.

HUNTINGTON BEACH HOSPITAL:
3.9 Mi. or 9 Mins.

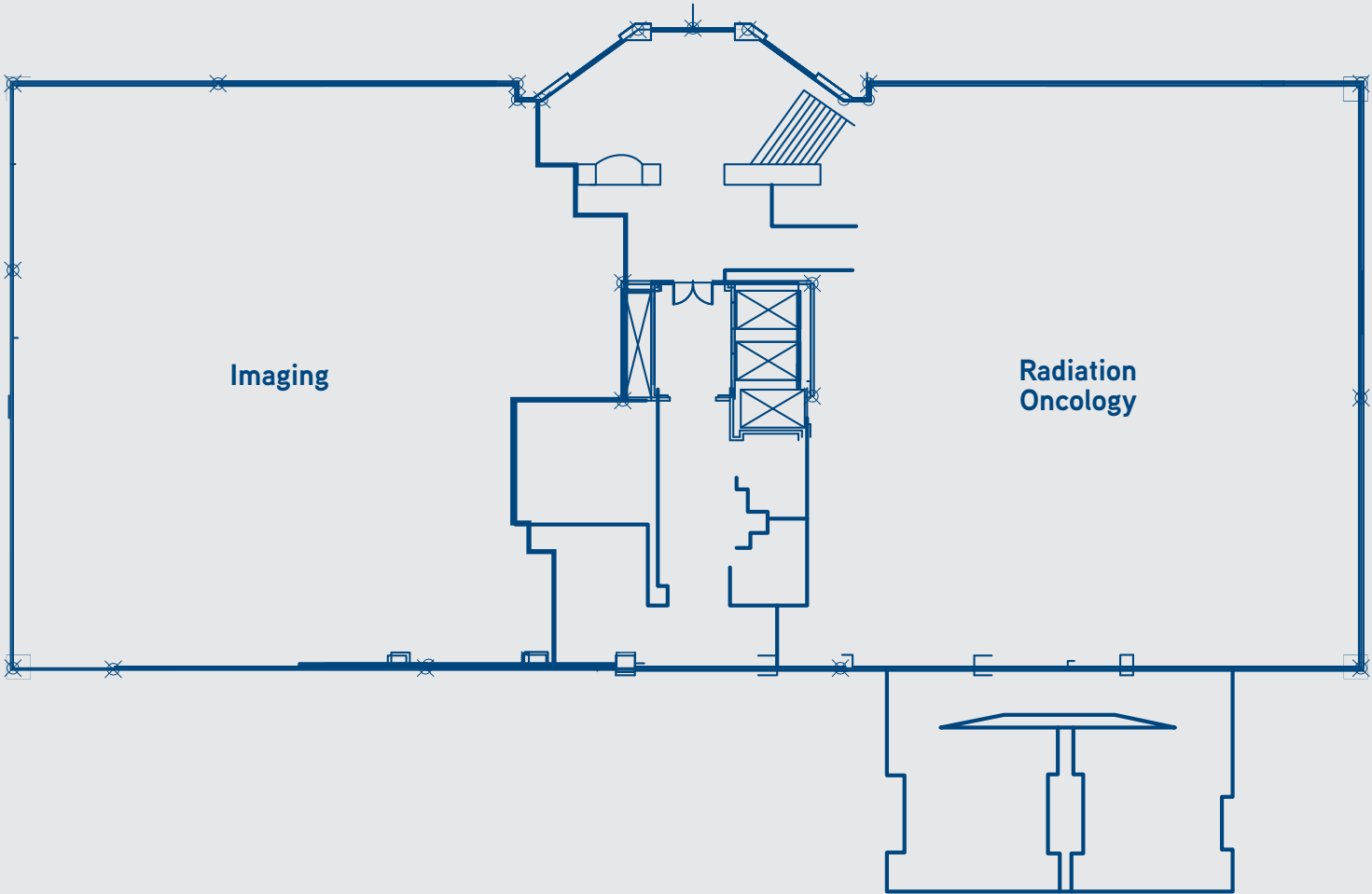
GARDEN GROVE HOSPITAL:
5.8 Mi. or 14 Mins.

WESTERN MEDICAL CENTER:
10.7 Mi. or 15 Mins.

HOAG HOSPITAL:
9.4 Mi. or 16 Mins.

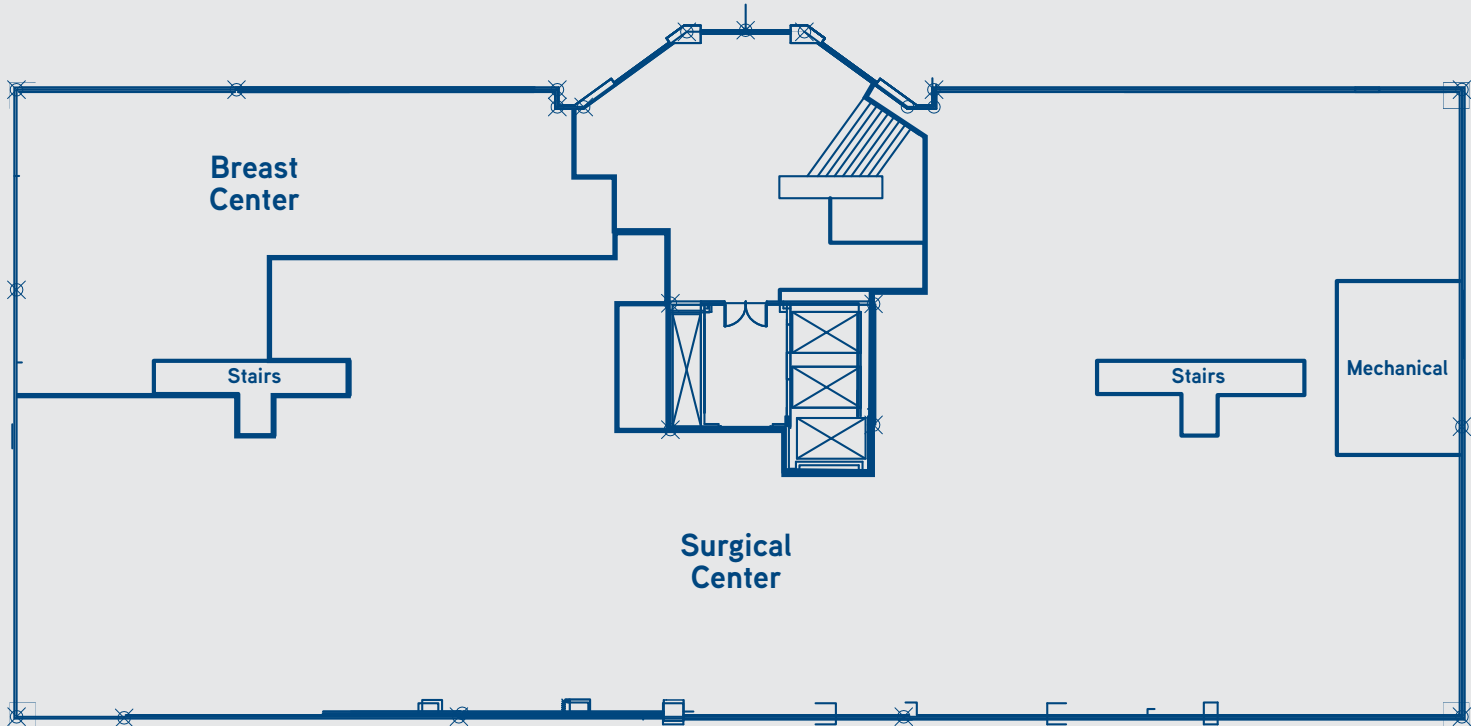


FIRST FLOOR



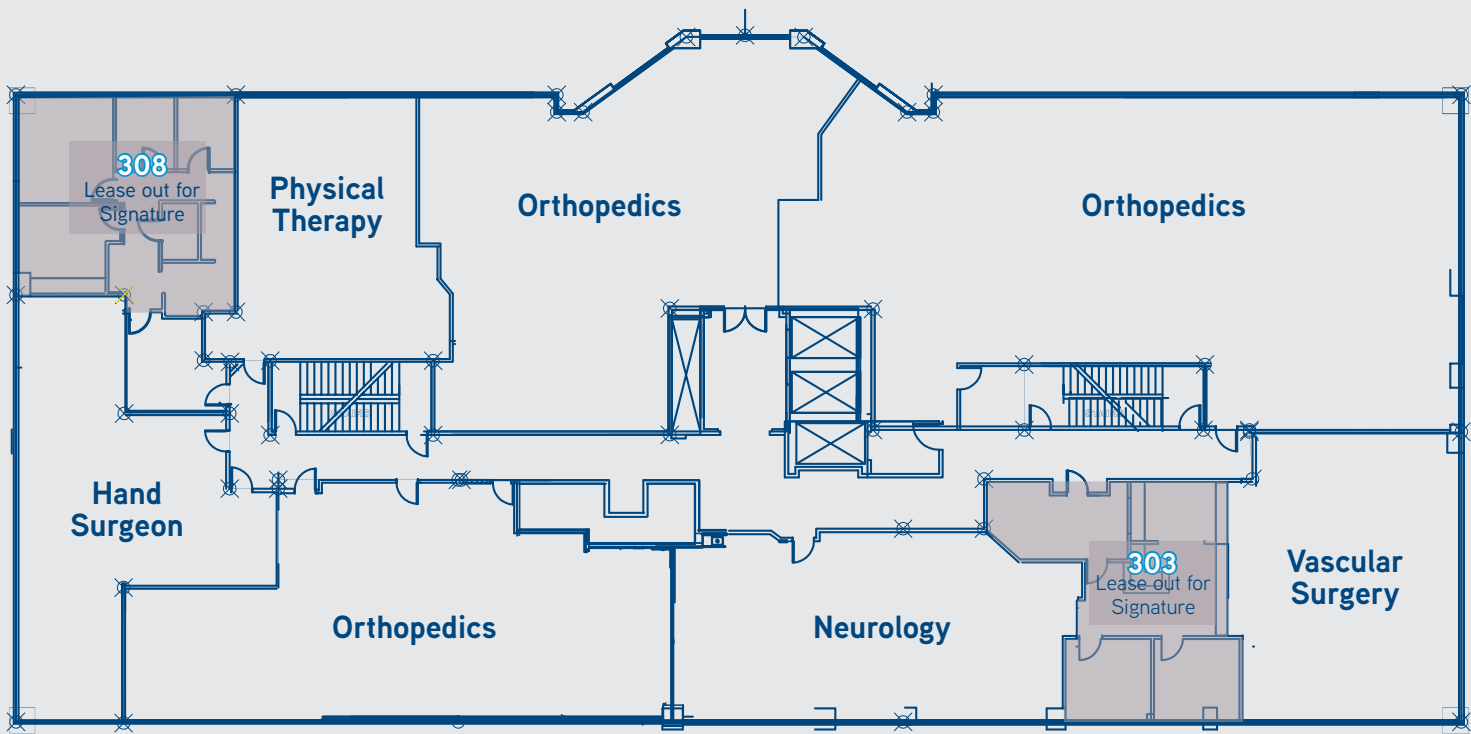
Suite #	Size	Availability
Fully Leased		

SECOND FLOOR



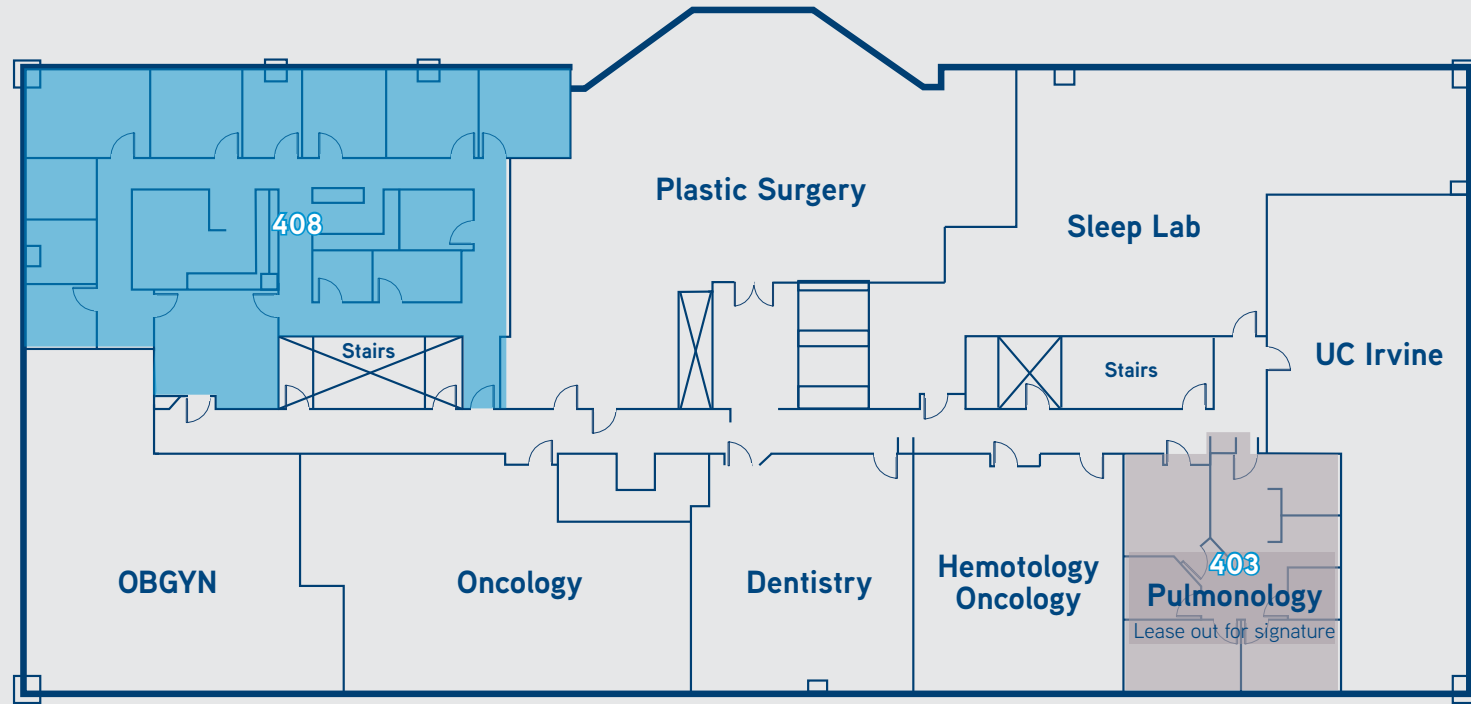
Suite #	Size	Availability
Fully Leased		

THIRD FLOOR



Suite #	Size	Availability
303	1,089 SF	Lease out for Signature
308	1,523 SF	Lease out for Signature

FOURTH FLOOR



Suite #	Size	Availability
403	1,208 SF	Lease out for Signature
408	3,548 SF	Vacant





Accelerating success.



FOR MORE DETAILS, CONTACT:

JOHN WADSWORTH

Senior Vice President | Irvine
Healthcare Services
License No. 01177404
949 724 5528
john.wadsworth@colliers.com

AARON PHILLIPS

Senior Associate | Irvine
Healthcare Services
License No. 01769480
949 724 5562
aaron.phillips@colliers.com