



FOR SALE >

Medical Office Building

5050 SKYLINE VILLAGE LOOP S
SALEM, OR

**100% NNN
LEASED
INVESTMENT**

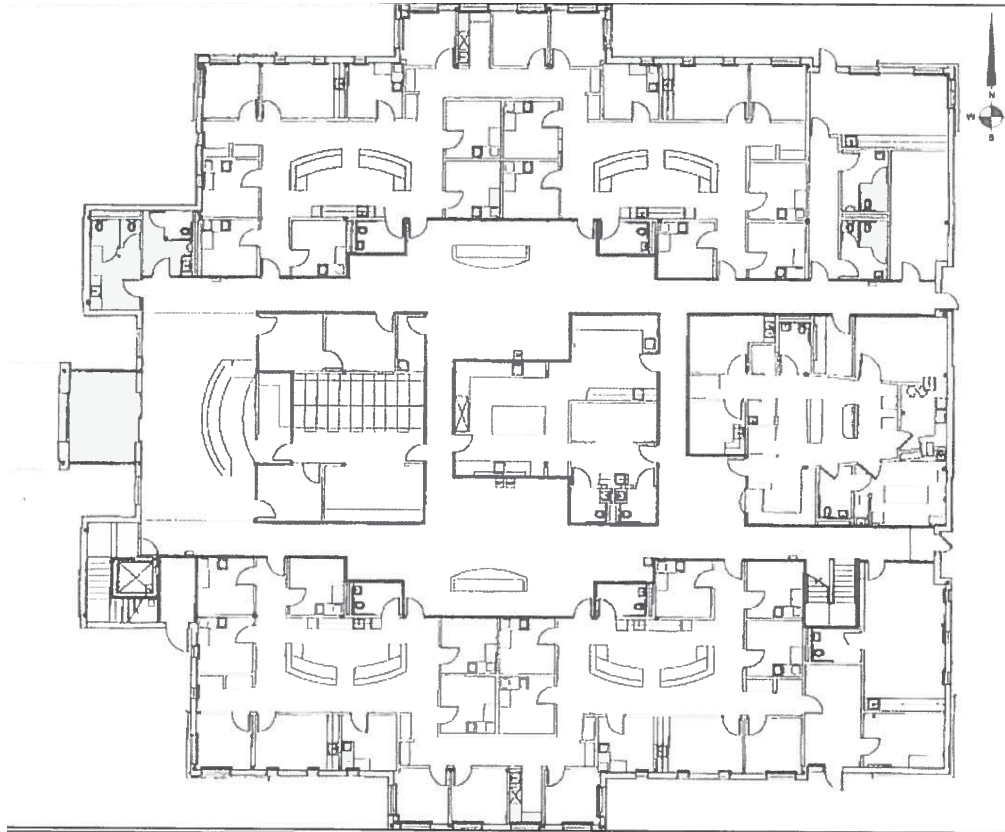
CHRIS JOHNSON
503 542 5884
PORTLAND, OREGON
chris.johnson@colliers.com

MARYKAY WEST
503 542 5885
PORTLAND, OREGON
marykay.west@colliers.com

BRAD CHRISTIANSEN
503 499 0054
PORTLAND, OREGON
brad.christiansen@colliers.com



FIRST FLOOR PLAN



FOR SALE >

5050 SKYLINE VILLAGE LOOP S
SALEM, OR

SALE PRICE:
CALL FOR NDA
& OFFER DETAILS

HIGHLIGHTS:

- 34,554 SF building
- 100% occupied by a growing corporate tenant with excellent credit
- 10 year NNN lease with scheduled annual rent increases

CHRIS JOHNSON
503 542 5884
PORTLAND, OREGON
daren.duke@colliers.com

MARYKAY WEST
503 542 5885
marykay.west@colliers.com

BRAD CHRISTIANSEN
503 499 0054
PORTLAND, OREGON
brad.christiansen@colliers.com





THE DOCTORS CLINIC

Kaiser Permanente
Skyline

COUNTRY
FINANCIAL

Skyline Rd S

**FIRST
PACIFIC**

→  2.2 Miles to I-5

Kuebler Blvd

2.2 miles to I-5 and 4
miles south of the Central
Business District



34,554 SF
office building
on 2.56 acres
(111,510
SF) zoned
Commercial
Office with a
parking ratio of
4.95/1,000.

Exceptional visibility on the corner
of Skyline Rd S and Kuebler Blvd.
Across from Kaiser Permanente
Medical Office and near Sprague
High School.



FOR SALE >

5050 SKYLINE VILLAGE LOOP S
SALEM, OR

**100% NNN
LEASED
INVESTMENT**

CHRIS JOHNSON
503 542 5884
PORTLAND, OREGON
chris.johnson@colliers.com

MARYKAY WEST
503 542 5885
marykay.west@colliers.com

BRAD CHRISTIANSEN
503 499 0054
PORTLAND, OREGON
brad.christiansen@colliers.com

