

FOR LEASE > RETAIL

JIMMY JOHN'S PLAZA

36350 - 36374 FORD ROAD | WESTLAND, MICHIGAN



EXCELLENT VISIBILITY AND ACCESS

> PROPERTY HIGHLIGHTS

- 800 Square Foot Space Available
- High Traffic Exposure on Corner of Ford Road and Central City Parkway
- Traffic Counts:
Ford Road - 34,000
Central City Parkway - 8,000

DEMOGRAPHICS	Category	1 Mile	3 Mile	5 Mile
	Population	12,485	108,160	258,722
	Average Income	\$51,866	\$63,838	\$68,128
	Households	6,541	47,867	108,976

COLLIERS INTERNATIONAL

2 Corporate Drive | Suite 300

Southfield, Michigan 48076

For More Information Call:

BEN HUBERT

PHONE 248 540 1000 EXT 1864

EMAIL ben.hubert@colliers.com



BEN ROSENZWEIG

PHONE 248 540 1000 EXT 1866

EMAIL ben.rosenzweig@colliers.com



colliers.com/detroit



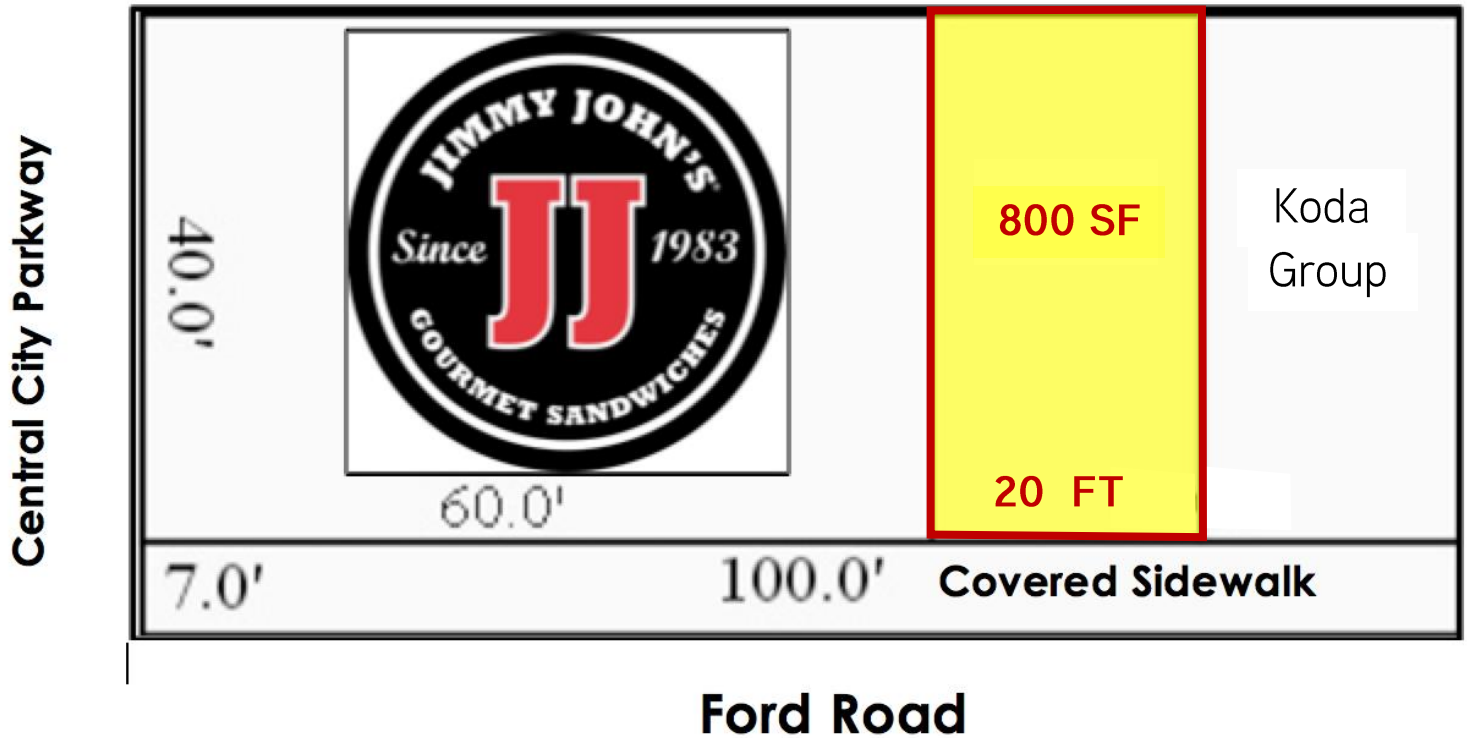
FOR LEASE > RETAIL

JIMMY JOHN'S PLAZA

36350 - 36374 FORD ROAD | WESTLAND, MICHIGAN



> SITE PLAN



BEN HUBERT
PHONE 248 540 1000 EXT 1864
EMAIL ben.hubert@colliers.com



BEN ROSENZWEIG
PHONE 248 540 1000 EXT 1866
EMAIL ben.rosenzweig@colliers.com

FOR LEASE > RETAIL

JIMMY JOHN'S PLAZA

36350 - 36374 FORD ROAD | WESTLAND, MICHIGAN



> BIRD'S EYE VIEW



BEN HUBERT

PHONE 248 540 1000 EXT 1864
EMAIL ben.hubert@colliers.com



BEN ROSENZWEIG

PHONE 248 540 1000 EXT 1866
EMAIL ben.rosenzweig@colliers.com

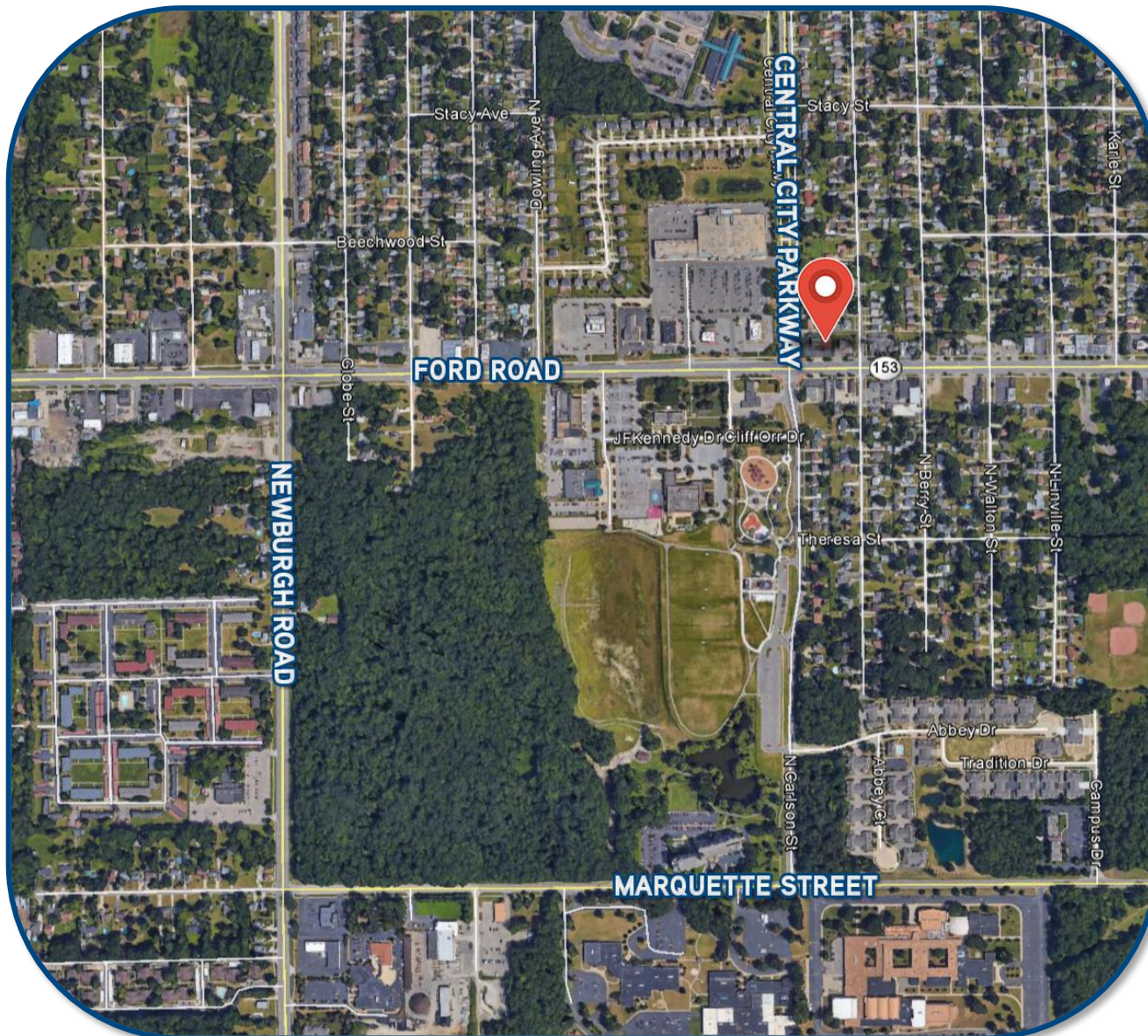
FOR LEASE > RETAIL

JIMMY JOHN'S PLAZA

36350 - 36374 FORD ROAD | WESTLAND, MICHIGAN



> AERIAL MAP



BEN HUBERT

PHONE 248 540 1000 EXT 1864
EMAIL ben.hubert@colliers.com



BEN ROSENZWEIG

PHONE 248 540 1000 EXT 1866
EMAIL ben.rosenzweig@colliers.com

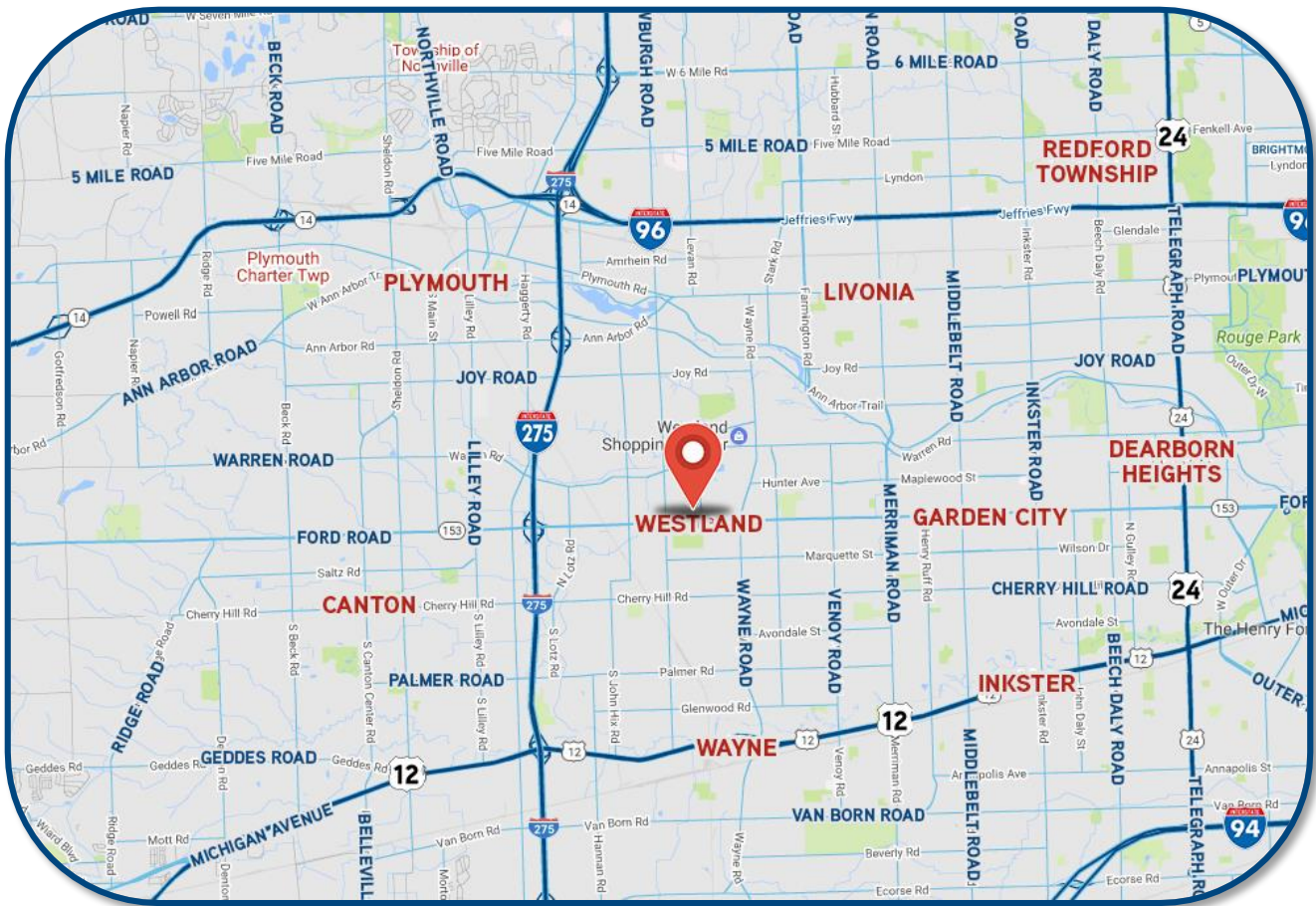
FOR LEASE > RETAIL

JIMMY JOHN'S PLAZA

36350 - 36374 FORD ROAD | WESTLAND, MICHIGAN



> LOCATION MAP



BEN HUBERT

PHONE 248 540 1000 EXT 1864

EMAIL ben.hubert@colliers.com



BEN ROSENZWEIG

PHONE 248 540 1000 EXT 1866

EMAIL ben.rosenzweig@colliers.com

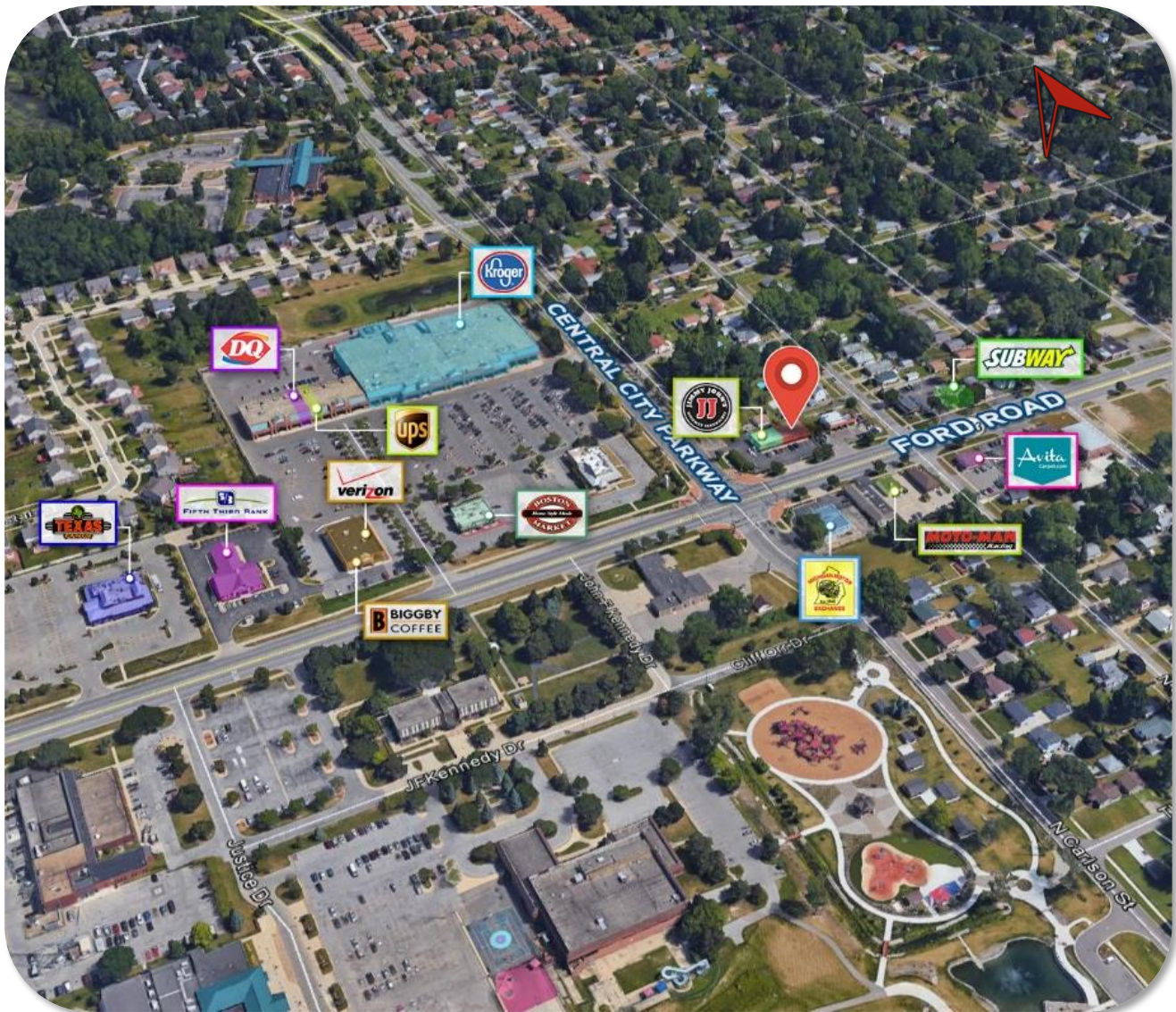
FOR LEASE > RETAIL

JIMMY JOHN'S PLAZA

36350 - 36374 FORD ROAD | WESTLAND, MICHIGAN



> AREA MERCHANT MAP



BEN HUBERT

PHONE 248 540 1000 EXT 1864
EMAIL ben.hubert@colliers.com



BEN ROSENZWEIG

PHONE 248 540 1000 EXT 1866
EMAIL ben.rosenzweig@colliers.com

SUMMARY PROFILE

2000-2010 Census, 2016 Estimates with 2021 Projections

Calculated using Weighted Block Centroid from Block Groups



Lat/Lon: 42.3246/-83.3985

RS1

36350-36374 Ford Rd

Westland, MI 48185

1 mi radius 3 mi radius 5 mi radius

POPULATION	2016 Estimated Population	12,485	108,160	258,722
	2021 Projected Population	12,043	103,897	248,455
	2010 Census Population	12,656	110,829	264,831
	2000 Census Population	13,065	112,923	271,815
	Projected Annual Growth 2016 to 2021	-0.7%	-0.8%	-0.8%
	Historical Annual Growth 2000 to 2016	-0.3%	-0.3%	-0.3%
	2016 Median Age	38.6	37.9	37.8
HOUSEHOLDS	2016 Estimated Households	6,541	47,867	108,976
	2021 Projected Households	6,478	47,336	107,751
	2010 Census Households	6,340	47,031	107,083
	2000 Census Households	6,620	47,295	107,873
	Projected Annual Growth 2016 to 2021	-0.2%	-0.2%	-0.2%
	Historical Annual Growth 2000 to 2016	-0.1%	0.1%	0.1%
RACE AND ETHNICITY	2016 Estimated White	66.5%	74.0%	73.5%
	2016 Estimated Black or African American	25.1%	16.4%	17.3%
	2016 Estimated Asian or Pacific Islander	3.4%	5.9%	5.5%
	2016 Estimated American Indian or Native Alaskan	0.4%	0.4%	0.3%
	2016 Estimated Other Races	4.6%	3.3%	3.4%
	2016 Estimated Hispanic	4.4%	3.8%	3.7%
INCOME	2016 Estimated Average Household Income	\$51,866	\$63,838	\$68,128
	2016 Estimated Median Household Income	\$36,588	\$53,329	\$58,166
	2016 Estimated Per Capita Income	\$27,277	\$28,301	\$28,761
EDUCATION (AGE 25+)	2016 Estimated Elementary (Grade Level 0 to 8)	2.5%	2.8%	2.7%
	2016 Estimated Some High School (Grade Level 9 to 11)	8.5%	7.5%	6.9%
	2016 Estimated High School Graduate	34.4%	31.5%	29.4%
	2016 Estimated Some College	25.9%	25.9%	25.4%
	2016 Estimated Associates Degree Only	9.8%	9.6%	9.4%
	2016 Estimated Bachelors Degree Only	14.2%	15.5%	17.1%
	2016 Estimated Graduate Degree	4.7%	7.2%	9.0%
BUSINESS	2016 Estimated Total Businesses	571	3,398	10,204
	2016 Estimated Total Employees	8,098	36,161	119,922
	2016 Estimated Employee Population per Business	14.2	10.6	11.8
	2016 Estimated Residential Population per Business	21.9	31.8	25.4

This report was produced using data from private and government sources deemed to be reliable. The information herein is provided without representation or warranty.