

# ARAPAHOE CORPORATE PARK II

OFFICE/WAREHOUSE FOR LEASE



# 6547

S. RACINE  
UNITS 900

CENTENNIAL, CO 80111



## AVAILABILITY INFORMATION

AVAILABLE:	Now
SIZE:	3,095 SF
OFFICE:	1,125 SF
WAREHOUSE:	1,910 SF
BASE RENT:	\$14.75/SF NNN
2026 CAM:	\$8.20/SF
MONTHLY RENT:	\$5,919.19
LOADING:	One (1) Drive-In Door
CLEAR HEIGHT:	16' Warehouse
PARKING:	Free Uncovered, Surface
SPRINKLERED:	Fully

## HIGHLIGHTS

- Arapahoe Corporate Park features a professional business park atmosphere, excellent location, and is close to both DTC and Centennial Airport
- Serviced by RTD, Arapahoe Corporate Park also has easy highway access to both I-25 and C-470
- Abundant parking
- Walking distance to numerous nearby restaurants and retail amenities

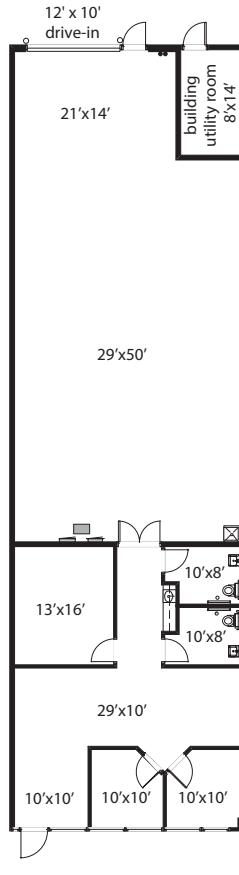


**CODY SHEESLEY**  
+1 303 309 3520  
cody.sheesley@colliers.com

**T.J. SMITH, SIOR**  
+1 303 283 4576  
tj.smith@colliers.com

**NICK RICE, SIOR**  
+1 720 833 4620  
nick.rice@colliers.com

**SITE PLAN**



**COLLIERS DENVER**

4643 S. Ulster Street | Suite 1000 | Denver, CO 80237

+1 303 745 5800 fax +1 303 745 5888 | [www.colliers.com/denver](http://www.colliers.com/denver)

No warranty or representation is made as to the accuracy of the foregoing information. Terms of sale or lease and availability are subject to change or withdrawal without notice.