

FOR SUBLEASE >

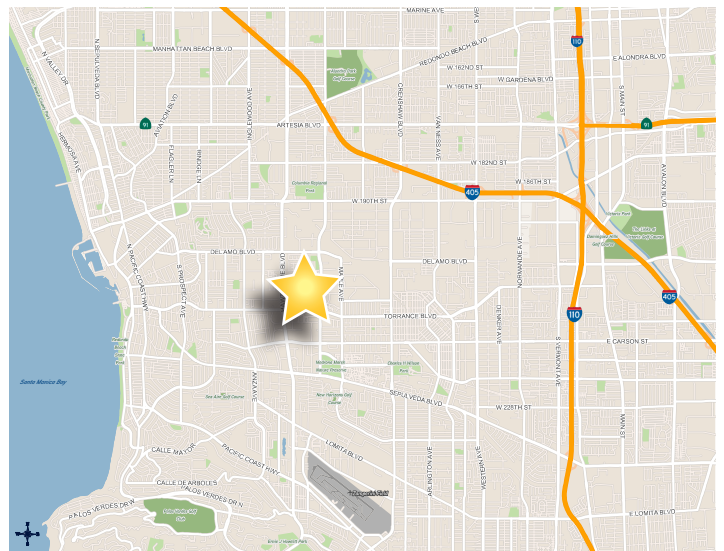
# 51,023 Square Feet

2610-2660 COLUMBIA ST. UNIT 2660 TORRANCE, CA



## Property Features

- > Central Torrance Location
- > POL 100,778 SF Building
- > 12,079 SF of Corporate Office
- > True Dock High Loading
- > Available 03/01/2018
- > Convenient Access to 405 & 110 Fwys



## Contact Us

JOSH MAY

Senior Vice President

License No. 01386831

+1 310 321 1808

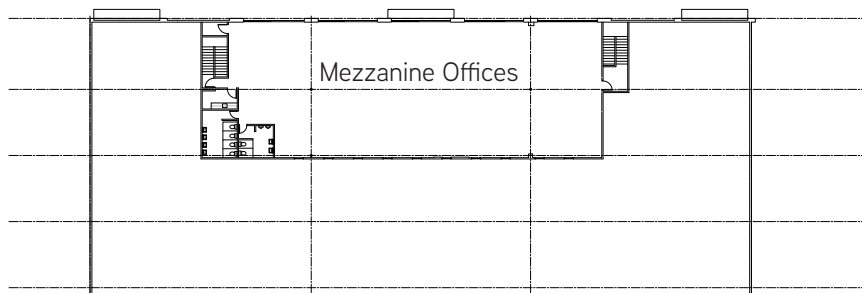
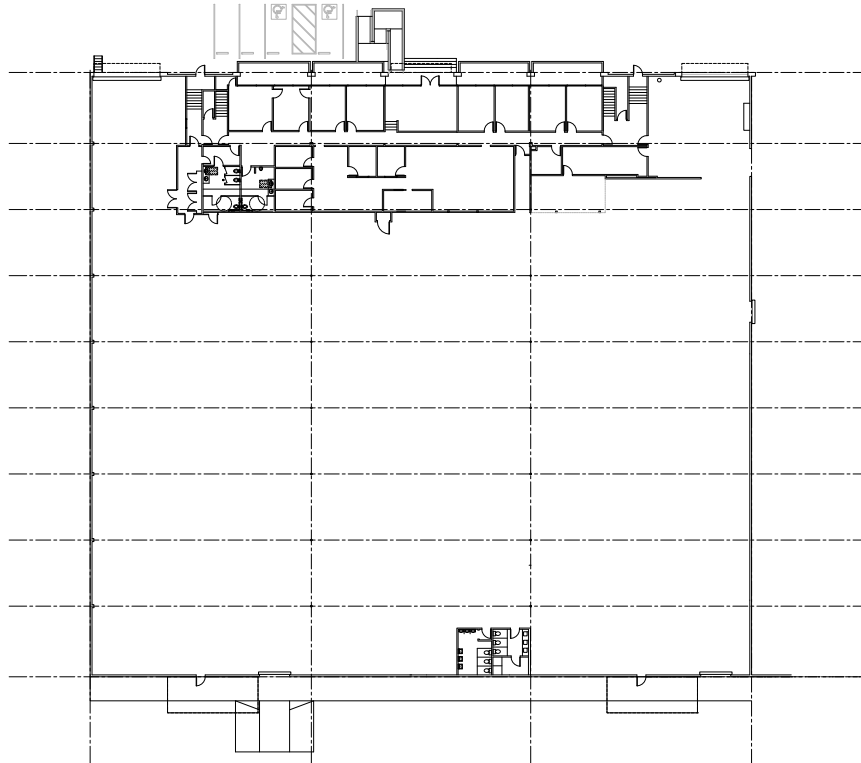
[josh.may@colliers.com](mailto:josh.may@colliers.com)

COLLIERS INTERNATIONAL  
2121 Rosecrans Avenue | Suite 3301  
El Segundo, CA 90245  
[www.colliers.com](http://www.colliers.com)

FOR SUBLEASE >

# 51,023 Square Feet

2610-2660 COLUMBIA ST. UNIT 2660 TORRANCE, CA



## Contact Us

JOSH MAY

*Senior Vice President*

License No. 01386831

+1 310 321 1808

[josh.may@colliers.com](mailto:josh.may@colliers.com)

COLLIERS INTERNATIONAL  
2121 Rosecrans Avenue | Suite 3301  
El Segundo, CA 90245  
[www.colliers.com](http://www.colliers.com)

Colliers International makes no guarantees, representations or warranties of any kind, expressed or implied, regarding the information including, but not limited to, warranties of content, accuracy and reliability. This publication is the copyrighted property of Colliers International and /or its licensor(s). 2017. All rights reserved.