

# 13 BRANCH STREET | VALLEY OFFICE PARK

2,803 SF AVAILABLE FOR SUBLEASE IN METHUEN, MA



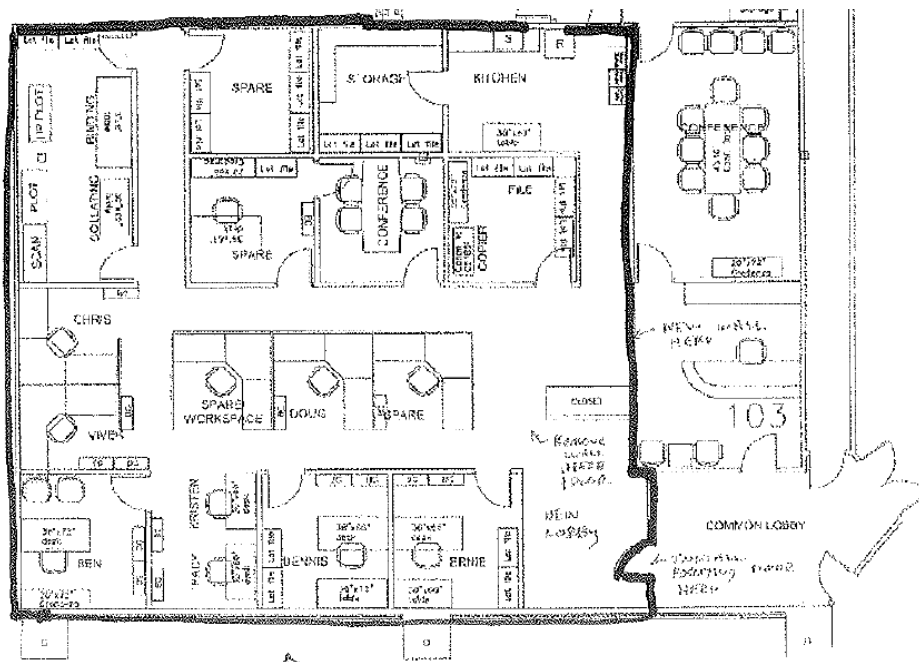
AVAILABILITY	2,803 SF
TERM	Through 2/28/2023
PARKING	4 per 1,000
CEILING HEIGHT	9'
ZONING	Business Highway
ELECTRICAL SERVICE	1,200 A (500 KVA Trans)
HVAC	Gas Fired Rooftop United, Fully A/S
TYPE FUEL	Natural Gas
UTILITIES	Municipal Water/Sewer/Cable







## FLOOR 1 2,803 SF



GREG KLEMMER  
617 330 8044  
Boston, MA  
greg.klemmer@colliers.com

TIM BRODIGAN  
617 330 8037  
Boston, MA  
tim.brodigan@colliers.com

DAN DRISCOLL  
617 330 8023  
Boston, MA  
daniel.driscoll@colliers.com

TIM ALLEN  
617 330 8031  
Boston, MA  
tim.allen@colliers.com

This document has been prepared by Colliers International for advertising and general information only. Colliers International makes no guarantees, representations or warranties of any kind, expressed or implied, regarding the information including, but not limited to, warranties of content, accuracy and reliability. Any interested party should undertake their own inquiries as to the accuracy of the information. Colliers International excludes unequivocally all inferred or implied terms, conditions and warranties arising out of this document and excludes all liability for loss and damages arising there from. This publication is the copyrighted property of Colliers International and/or its licensor(s). ©2017. All rights reserved.



colliers.com/boston