



# Paradise Offices

601-609 County Road 10 NE  
Blaine, MN

JUSTIN RATH

952 897 7803 direct

612 720 6957 mobile

[justin.rath@colliers.com](mailto:justin.rath@colliers.com)

DAN FRIEDNER

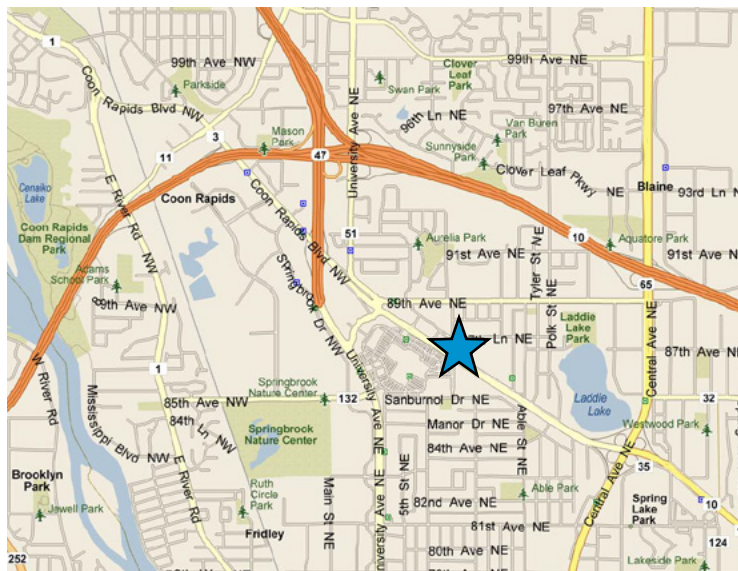
952 897 7863 direct

612 599 7864 mobile

[dan.friedner@colliers.com](mailto:dan.friedner@colliers.com)



COLLIERS INTERNATIONAL  
5985 Rice Creek Parkway, Suite 105  
Shoreview, MN 55126  
[www.colliers.com/msp](http://www.colliers.com/msp)



## FOR LEASE > OFFICE

Address: 601-609 County Road 10 NE

Building Size: 11,611 square feet

Availability: 1,157 square feet

Utilities: Included in lease rates

Amenities:

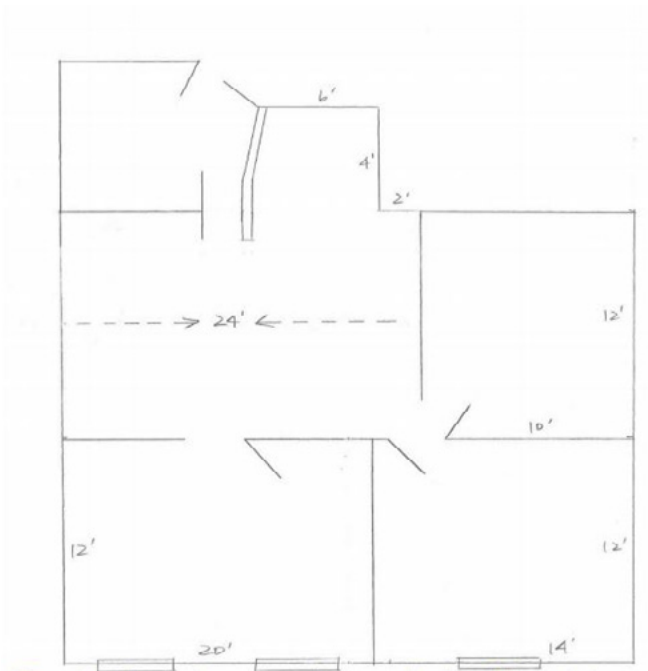
- Great visibility on County Road 10
- Ample parking
- Pylon signage available
- Across from Northtown Mall
- Outdoor patio

### GROSS LEASE RATES:

\$14.00 per square foot

### SUITE 200:

- 1,157 square feet
- \$1,350 per month
- Three (3) office
- Reception area
- Cubicle space



### CONTACT US

JUSTIN RATH  
952 897 7803 direct  
612 720 6957 mobile  
[justin.rath@colliers.com](mailto:justin.rath@colliers.com)

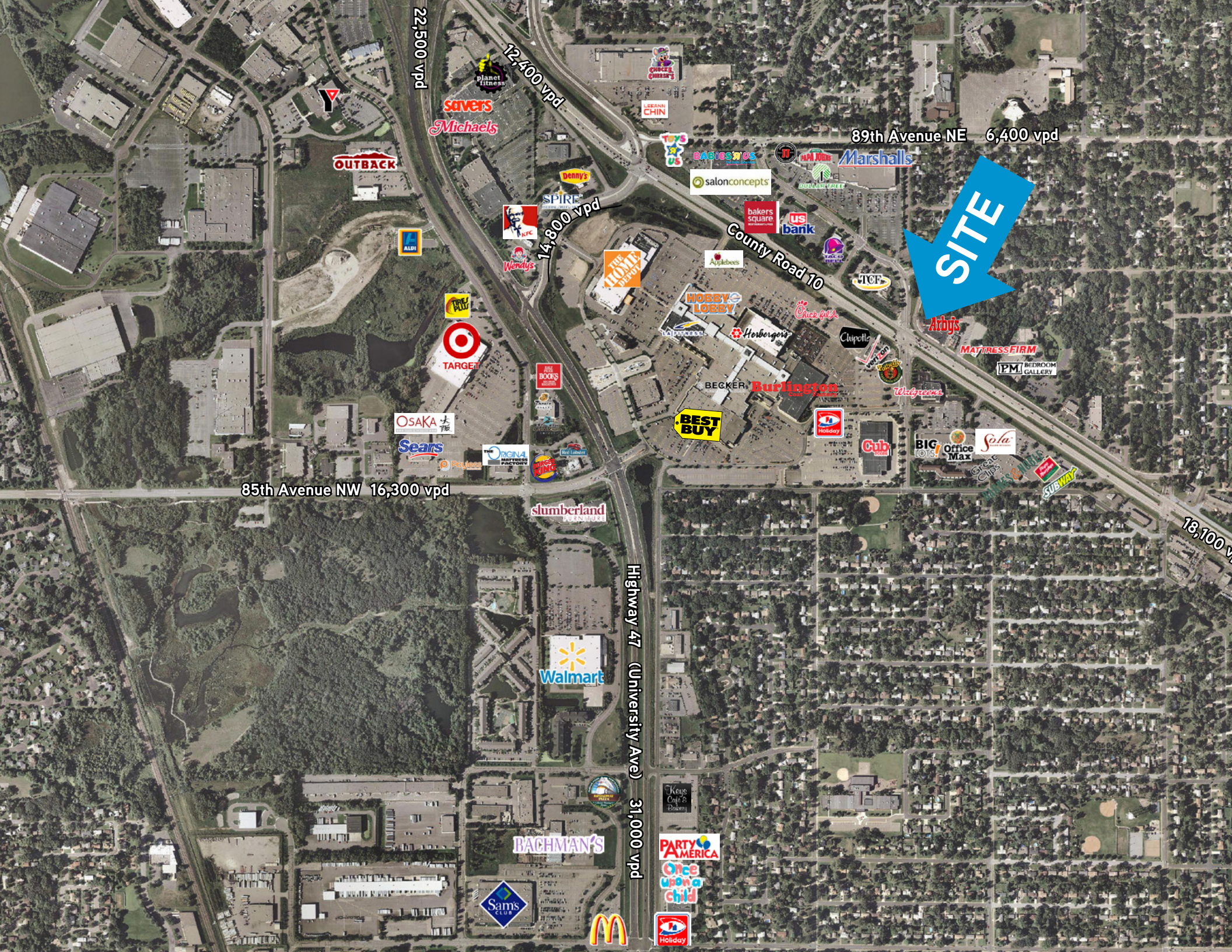
DAN FRIEDNER  
952 897 7863 direct  
612 599 7864 mobile  
[dan.friedner@colliers.com](mailto:dan.friedner@colliers.com)

This document/email has been prepared by Colliers International for advertising and general information only. Colliers International makes no guarantees, representations or warranties of any kind, expressed or implied, regarding the information including, but not limited to, warranties of content, accuracy and reliability. Any interested party should undertake their own inquiries as to the accuracy of the information. Colliers International excludes unequivocally all inferred or implied terms, conditions and warranties arising out of this document and excludes all liability for loss and damages arising there from. This publication is the copyrighted property of Colliers International and /or its licensor(s). © 2016. All rights reserved. This communication is not intended to cause or induce breach of an existing listing agreement.



**COLLIERS INTERNATIONAL**  
5985 Rice Creek Parkway  
Suite 105  
Shoreview, MN 55126  
[www.colliers.com/msp](http://www.colliers.com/msp)





**SITE**

22,500 vpd

12,400 vpd

89th Avenue NE 6,400 vpd

14,800 vpd

County Road 10

85th Avenue NW 16,300 vpd

Highway 47 (University Ave) 31,000 vpd

18,100 vpd