

FOR SALE > LAND



1950 W 86th Street

INDIANAPOLIS, IN 46260



Property Highlights

- > 1.97 acres
- > Zoned HD2
- > Located across from St. Vincent Hospital main campus
- > Adjacent to medical office buildings and new senior living facilities
- > Traffic count on W 86th St: 31,744 vehicles per day
- > At signalized intersection
- > Potential site for a medical office

DEMOGRAPHICS

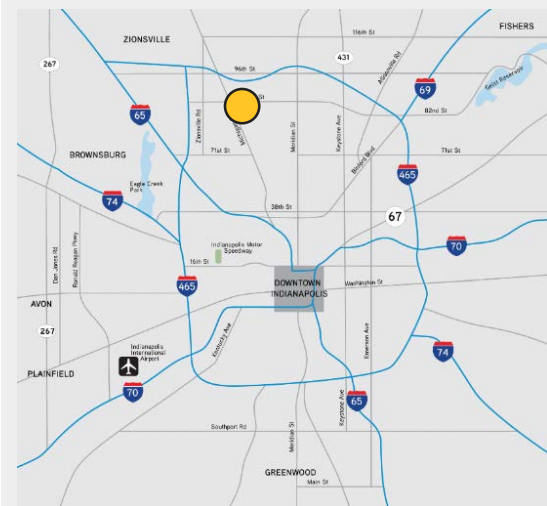
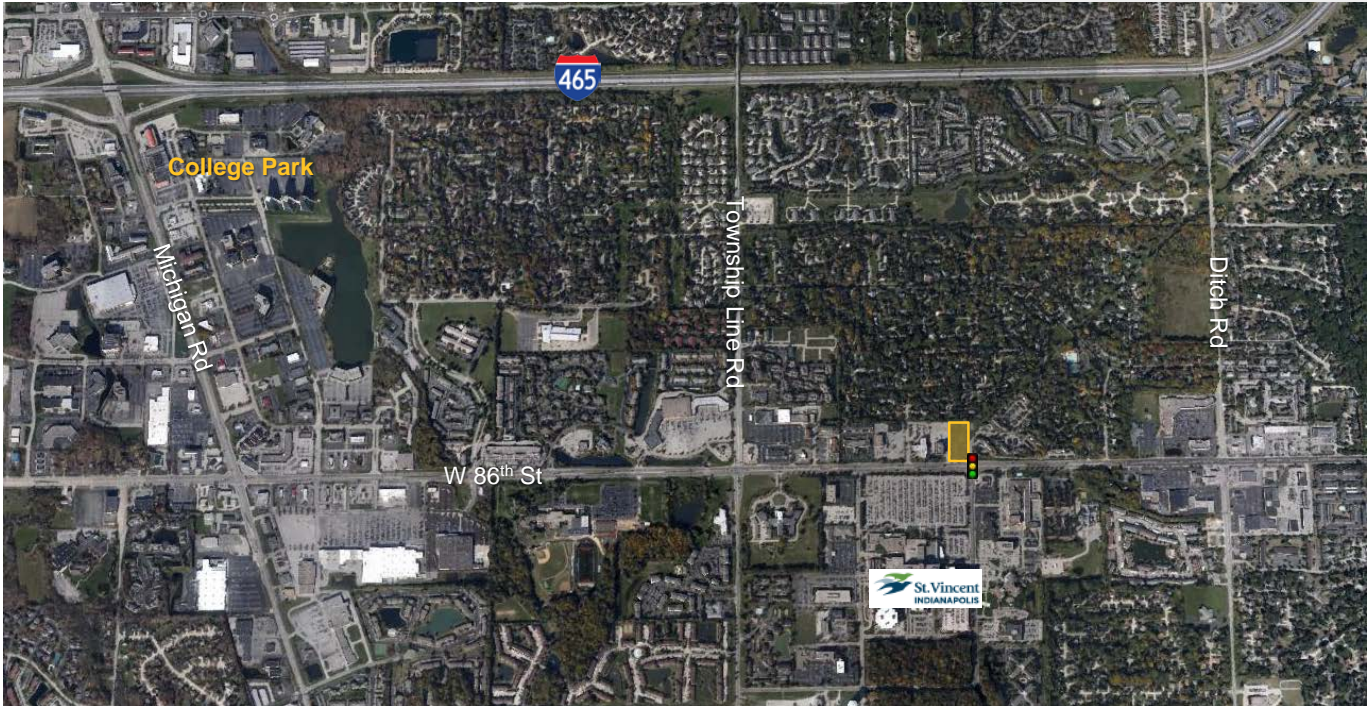
	1 Mile	3 Miles	5 Miles
Population 2016	13,692	65,434	155,398
Est. Population 2021	13,937	67,808	164,258
Avg. Household Income 2016	\$66,529	\$80,465	\$89,678
Est. Avg. Household Income 2021	\$74,304	\$88,556	\$98,929
Total Households 2016	6,591	27,786	66,844
Est. Total Households 2021	6,666	28,605	70,367

TIM NORTON, SIOR
317 713 2136
tim.norton@colliers.com

RJ RUDOLPH, SIOR
317 713 2152
rj.rudolph@colliers.com

COLLIERS INTERNATIONAL
241 N Pennsylvania St, Suite 300
Indianapolis, IN 46204
colliers.com

Photos



Contact Us

TIM NORTON, SIOR

317 713 2136

tim.norton@colliers.com

RJ RUDOLPH, SIOR

317 713 2152

rj.rudolph@colliers.com