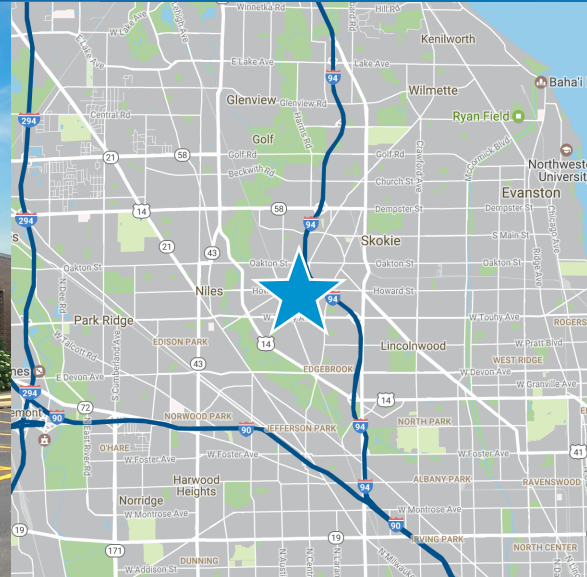


AVAILABLE > 11,757 SF

5641 Howard Street

NILES, IL



About This Property

- > Location: Howard Plaza III
- > Space Available: 11,757 SF
- > Office: 3,292 SF (28%)
- > Total Building Size: 92,986 SF
- > Construction: Masonry/Steel
- > Ceiling Height: 14' Clear
- > Loading: Four common exterior depressed docks with levelers
- > HVAC: Office: Gas-fired forced air heat; roof top AC
- > Warehouse: Gas-fired hanging unit heaters
- > Electric Capacity: 200 Amps
- > Sprinklers: Wet System
- > Taxes: 2017 Estimated \$2.49 PSF
- > CAM: 2017 Estimated \$1.03 PSF
- > Rental Rent: \$9,327.00 /month (\$6.00 PSF Net)
- > Availability: Immediately
- > Public transportation on Howard Street
- > Gas & electric utilities are separately metered
- > ¼ mile west of Eden's Expressway (I-94)
- > On-site property management

Contact Us

BRENDAN C. GREEN

847 698 8227

brendan.green@colliers.com

CHRIS VOLKERT

847 698 8237

chris.volkert@colliers.com

B R E N N A N
I N V E S T M E N T
G R O U P

No warranty or representation is made to the accuracy of the foregoing information.
Terms of sale or lease and availability are subject to change or withdrawal without notice.

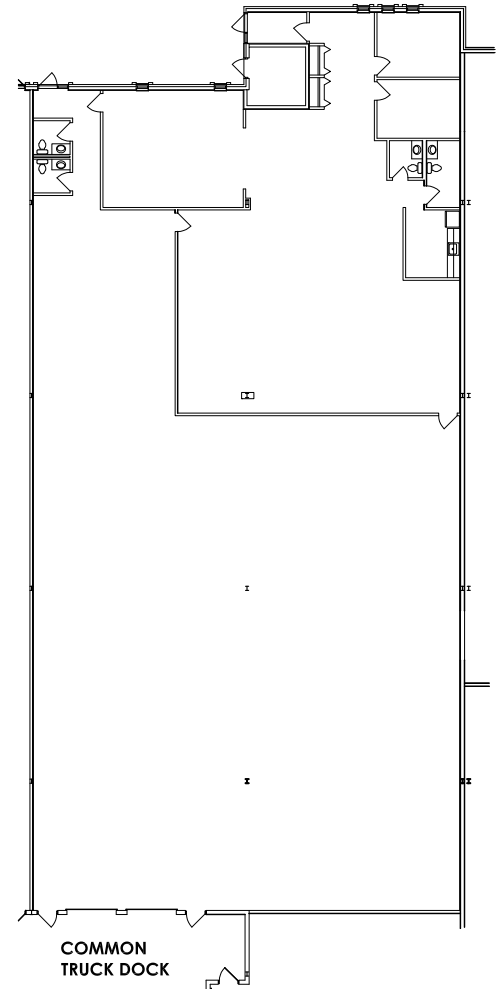
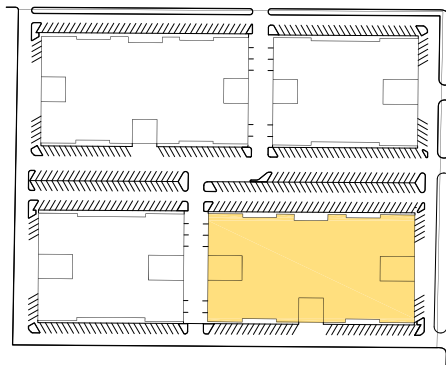
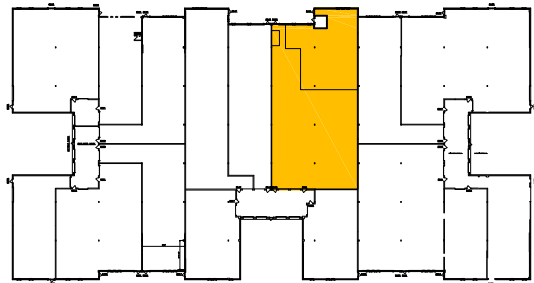
COLLIERS INTERNATIONAL

6250 N. River Road, Suite 11-100

Rosemont, IL 60018

www.colliers.com

5641 Howard Street > Floor Plan



BRENDAN C. GREEN
847 698 8227
brendan.green@colliers.com

CHRIS VOLKERT
847 698 8237
chris.volkert@colliers.com

