

FOR SALE > RETAIL LAND

Prime Corner Retail Land

12515 SOUTH ROSECREST ROAD, HERRIMAN, UT



Property Information

- > 5.04 acres
- > Zoning: C-2
- > Excellent corner location central to many large, planned residential and commercial developments
- > Sale price: \$11.00 - \$16.00/SF
- > Land can be divisible to 2 acres
- > 1 mile to Mountain View Corridor
2 miles to TRAX/Daybreak
3 miles to The District

DEMOGRAPHICS	1 MILE	3 MILE	5 MILE
Population			
2018 Estimated	9,755	76,736	163,987
2023 Projected	11,183	92,400	189,747
Households			
2018 Estimated	2,666	20,147	42,688
2023 Projected	3,046	24,155	49,243
Income			
2018 Median HHI	\$77,140	\$94,137	\$96,744
2018 Average HHI	\$98,725	\$109,557	\$112,058
2018 Per Capita	\$25,728	\$28,343	\$29,316

Information provided by ESRI Business Analyst

Josh Smith
+1 801 453 6823
josh.smith@colliers.com

Brandon Fugal
+1 801 947 8300
brandon.fugal@colliers.com

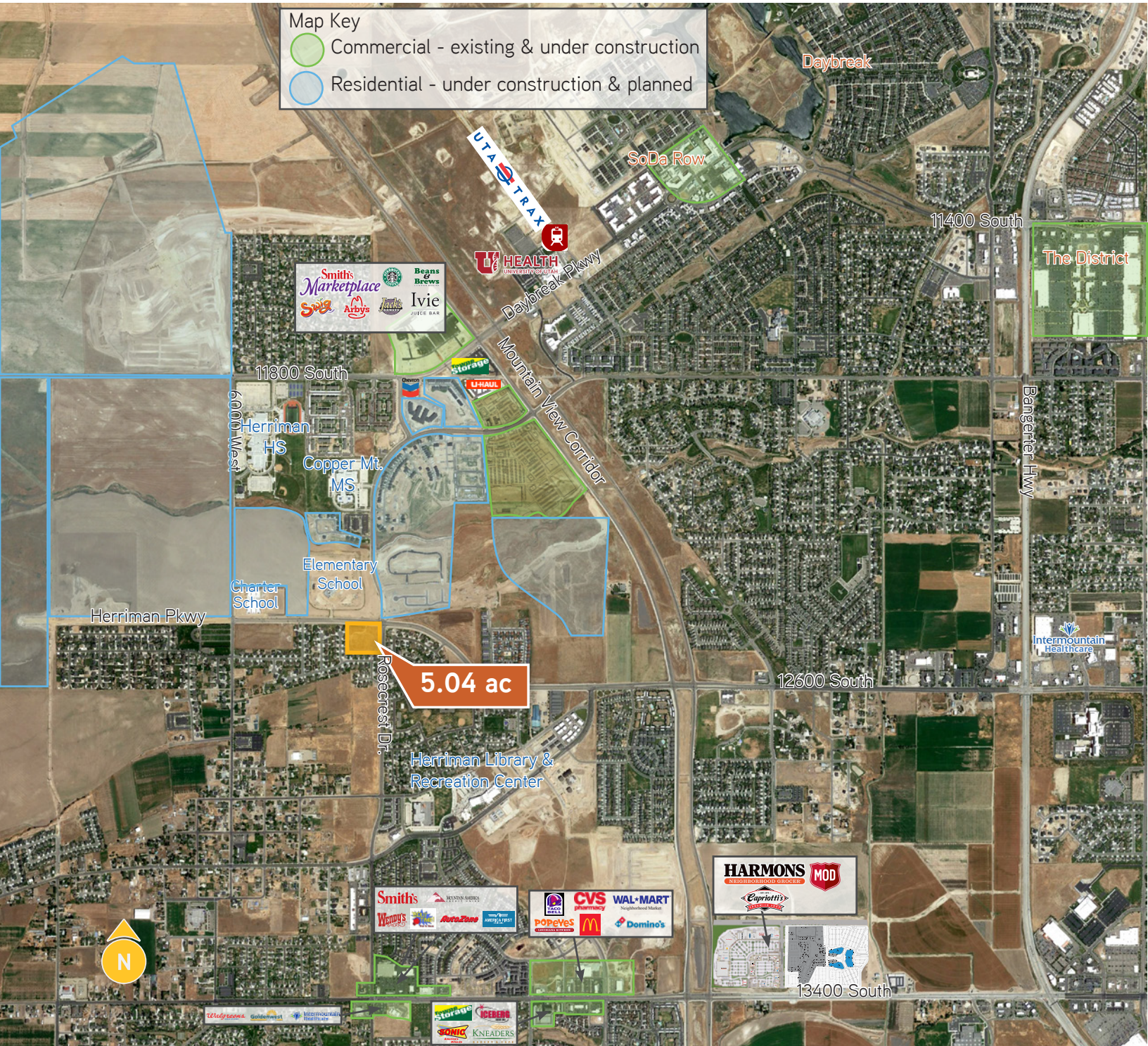
Jordan Wall
+1 801 947 8300
jordan.wall@colliers.com

Colliers International
6550 South Millrock Dr., Suite 200
Salt Lake City, Utah 84121

FOR SALE > RETAIL LAND

Prime Corner Retail Land

12515 SOUTH ROSECREST ROAD, HERRIMAN, UT



This document has been prepared by Colliers International for advertising and general information only. Colliers International makes no guarantees, representations or warranties of any kind, expressed or implied, regarding the information including, but not limited to, warranties of content, accuracy and reliability. Any interested party should undertake their own inquiries as to the accuracy of the information. Colliers International excludes unequivocally all inferred or implied terms, conditions and warranties arising out of this document and excludes all liability for loss and damages arising there from. This publication is the copyrighted property of Colliers International and/or its licensor(s). ©2018. All rights reserved.

