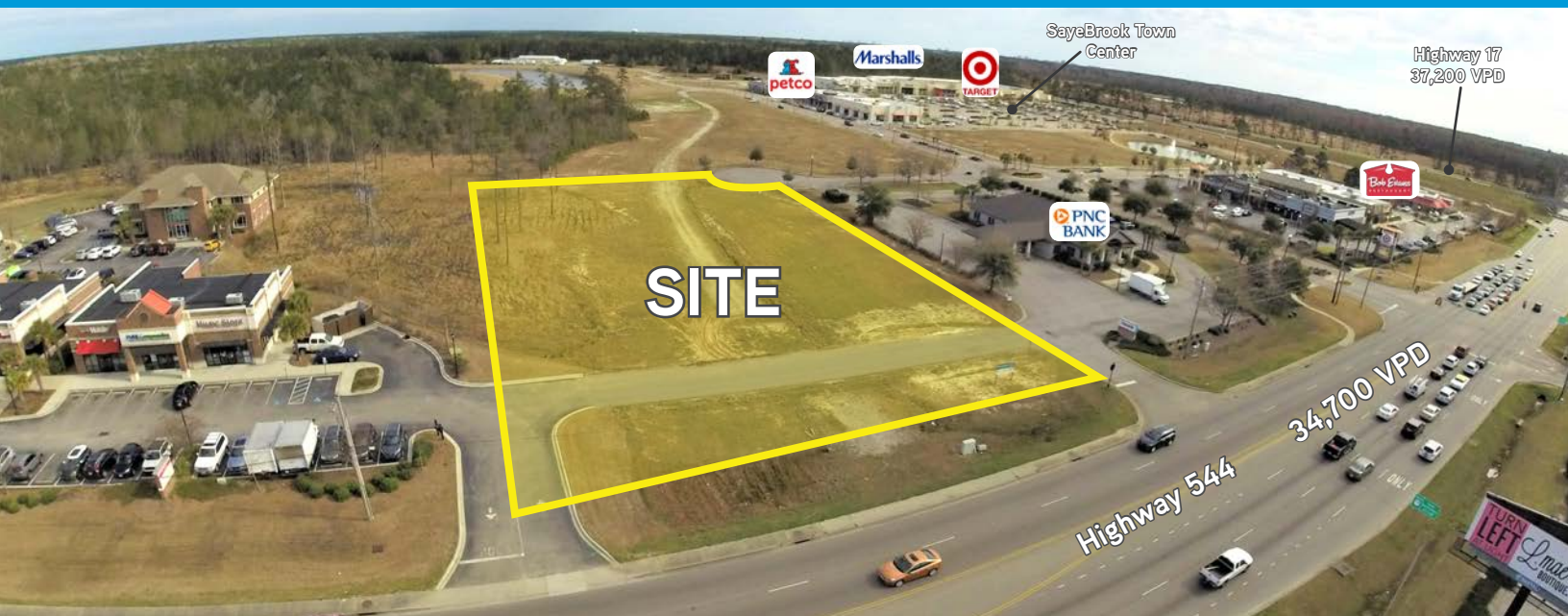


OUTPARCEL RETAIL SPACE AVAILABLE



SayeBrook Outparcel

SAYEBROOK TOWN CENTER, MYRTLE BEACH, SC



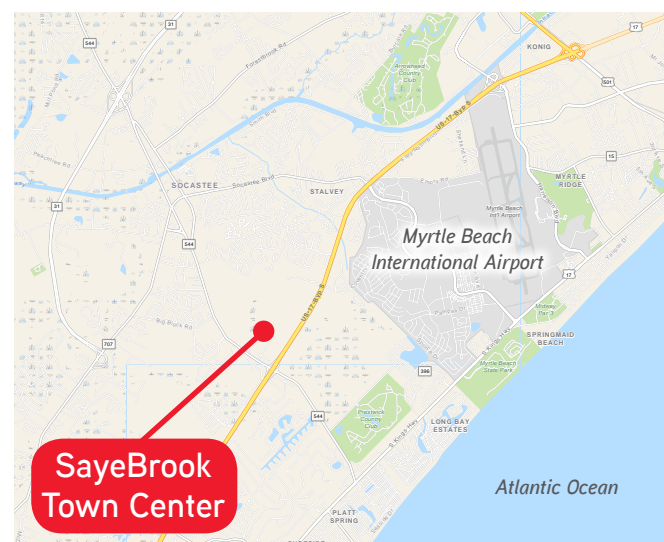
Sayebrook Town Center

SayeBrook Town Center is the hub of retail growth and development in the South Strand area of Myrtle Beach. SayeBrook includes anchors tenants Target, Marshalls, Petco, Kirkland's, Burger Fi, Bob Evans, PNC Bank and many other retailers. SayeBrook is developing a new outparcel building which will be anchored by a state-of-the-art Spectrum cable and mobile phone store. The site is at the entrance to SayeBrook and will also have excellent access and visibility directly to Hwy 544. The building will have several spaces available including the possibility of a drive-thru end cap.

- AVAILABLE: Parcel A
- Drive thru available
- 82 on-site parking spaces
- Connectivity to Sayebrook Parkway from the site
- Suites ranging from 1,500 to 4,875 SF
- Frontage on Hwy 544
- Contact brokers for lease rate

Demographics

	8 Min	10 Min	15 Min
2018 Population:	33,908	54,235	124,729
Total Daytime Pop:	33,379	53,130	135,057
Avg HH Income:	\$66,344	\$64,606	\$64,020



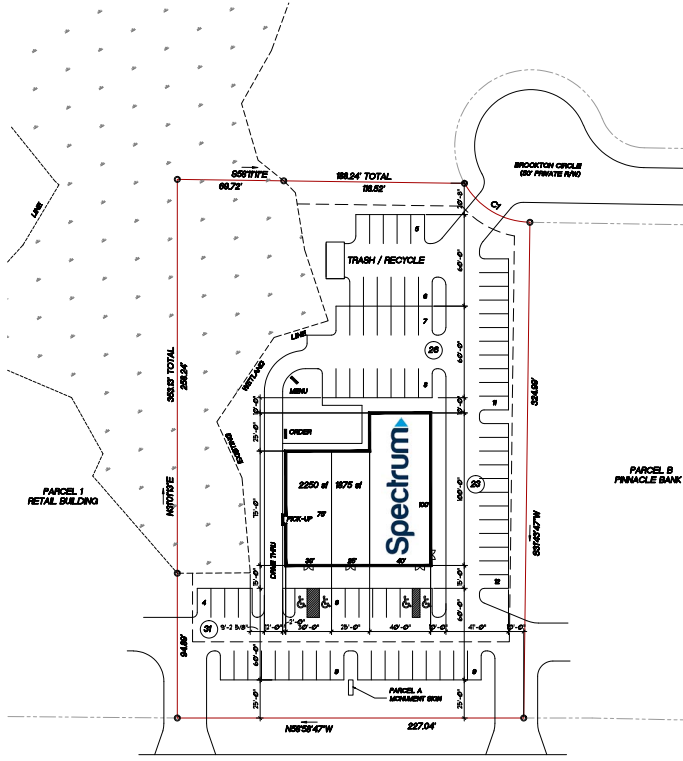
ROX POLLARD
803 401 4242 DIRECT
rox.pollard@colliers.com

TAYLOR WOLFE
803 401 4217 DIRECT
taylor.wolfe@colliers.com

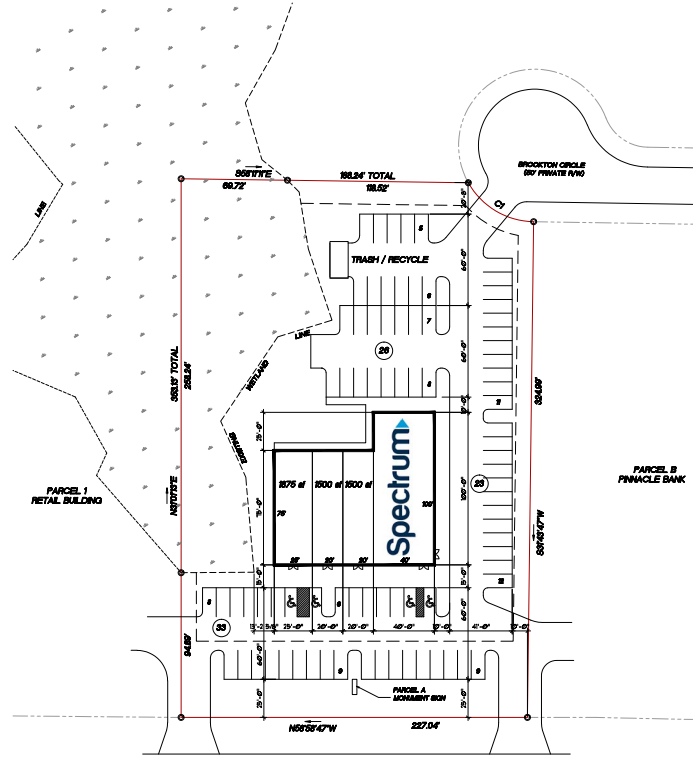
COLLIERS INTERNATIONAL
1301 Gervais Street, Suite 600
Columbia, South Carolina 29201
www.colliers.com

Saybrook Town Center > Saybrook Outparcel

SITE PLAN OPTION A: WITH DRIVE-THRU WINDOW



SITE PLAN OPTION B: WITHOUT DRIVE-THRU WINDOW



Contact Us

ROX POLLARD

803 401 4242 DIRECT

rox.pollard@colliers.com

TAYLOR WOLFE

803 401 4217 DIRECT

taylor.wolfe@colliers.com

COLLIERS INTERNATIONAL

1301 Gervais Street

Suite 600

Columbia, South Carolina 29201

www.colliers.com