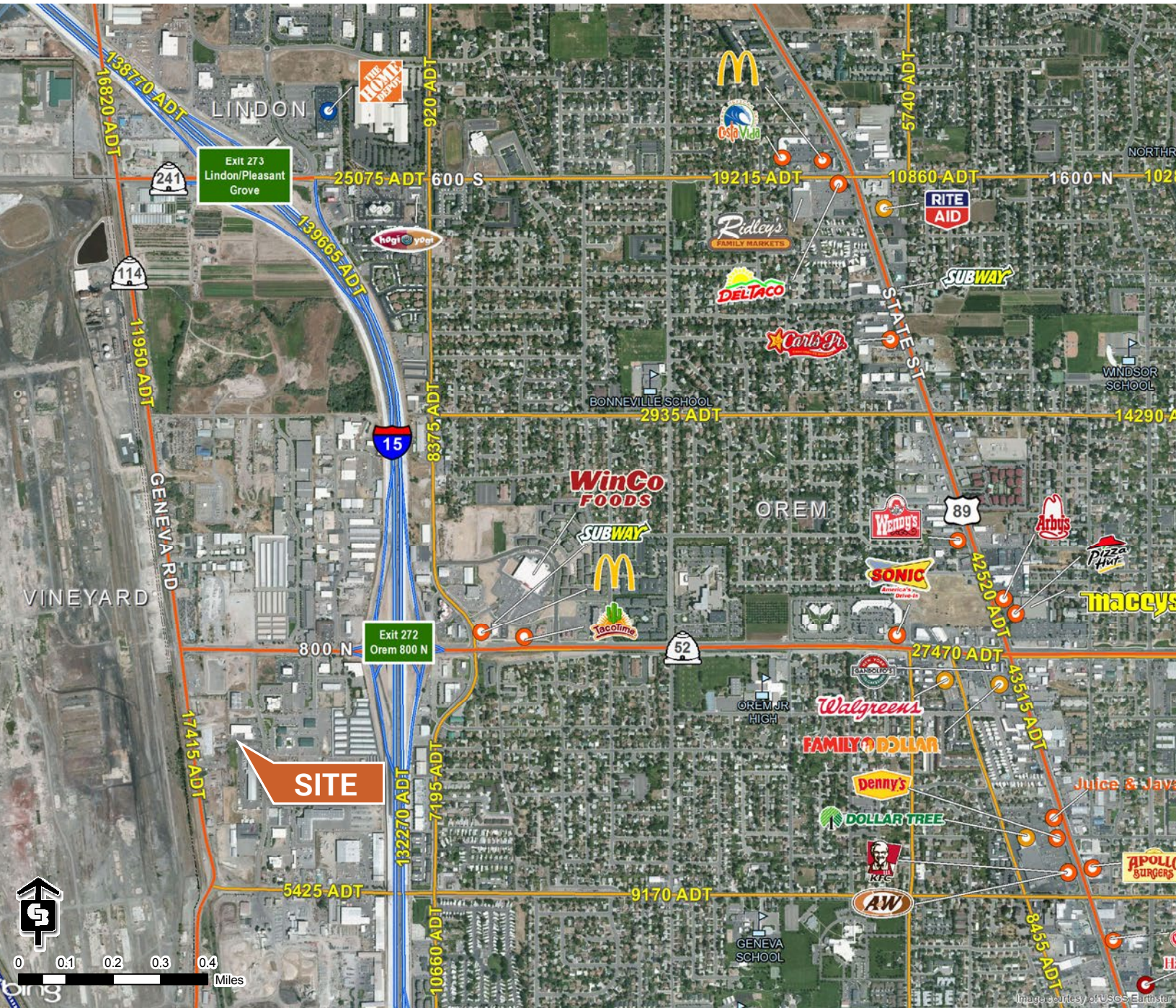


FOR LEASE OR SALE > INDUSTRIAL SPACE

# Emergency Essentials Building

653 NORTH 1500 WEST OREM, UTAH



FOR LEASE OR SALE > INDUSTRIAL SPACE

# Emergency Essentials Building

653 NORTH 1500 WEST OREM, UTAH



## Property Information

- > Sales Price: \$3,500,000
- > For Lease: \$0.65/PSF/Month/NNN
- > 30,210 SF Office/Warehouse
- > Main Floor Total: 26,908 SF
  - Main Floor Office: 2,876 SF
  - Main Floor Warehouse: 24,032 SF
- > Second Floor Office: 3,302 SF
- > 1.6 Acres



This document has been prepared by Colliers International for advertising and general information only. Colliers International makes no guarantees, representations or warranties of any kind, expressed or implied, regarding the information including, but not limited to, warranties of content, accuracy and reliability. Any interested party should undertake their own inquiries as to the accuracy of the information. Colliers International excludes unequivocally all inferred or implied terms, conditions and warranties arising out of this document and excludes all liability for loss and damages arising there from. This publication is the copyrighted property of Colliers International and/or its licensor(s). ©2017. All rights reserved.



Jarrod Hunt  
+1 801 787 8940  
jarrod.hunt@colliers.com

Gordon Jacobson  
+1 801 597 5500  
jarrod.hunt@colliers.com

Colliers International  
2100 Pleasant Grove Blvd. | Suite 200  
Pleasant Grove, UT 84062  
P: +1 801 610 1300

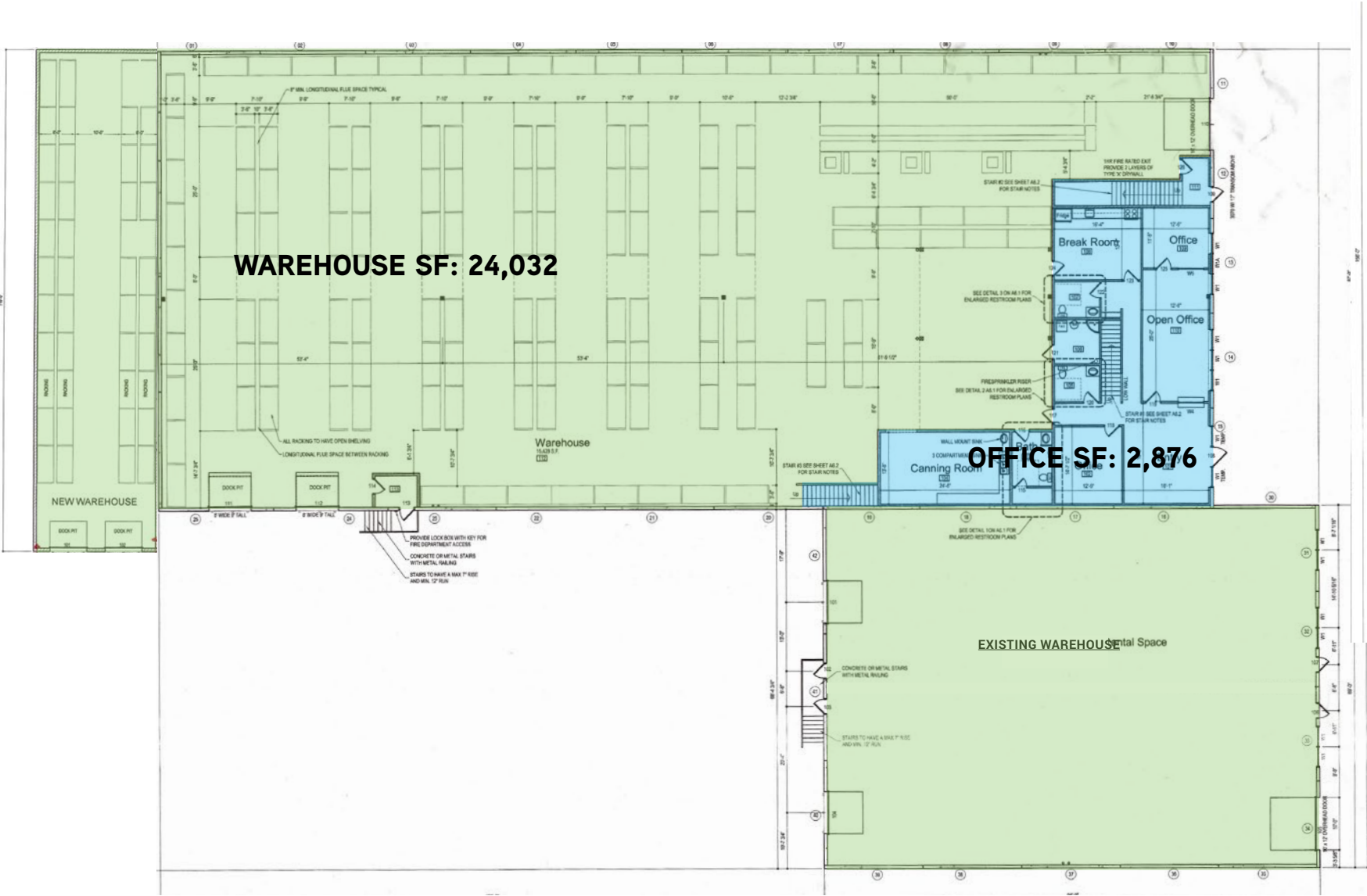


FOR LEASE OR SALE > INDUSTRIAL SPACE

# Emergency Essentials Building

653 NORTH 1500 WEST OREM, UTAH

MAIN FLOOR TOTAL SF: 26,908



SECOND FLOOR TOTAL SF: 3,302

