

PRICED TO LEASE
\$3.45 FULL SERVICE

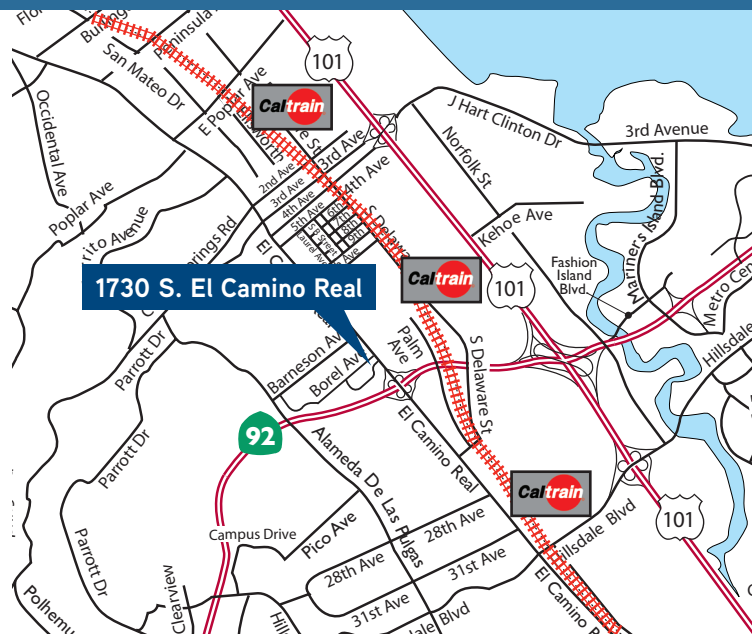


SHORT-TERM CREATIVE SUBLEASE IN SAN MATEO, CA

1730 S. El Camino Real | Suite 200

Highlights

- ±3,550 square feet
- Seven minute walk to the Caltrain station
- On-site parking
- Adjacent to retail amenities
- Good natural light with an open floor plan
- Monument signage
- Kitchen
- Easy access to US 101, SR 92 and I-280
- Credit sublessor
- LED: 5/31/19



JOHN MCLELLAN
+1 650 486 2223
john.mclellan@colliers.com
CA License No. 01869489

MICHAEL FINLEY
+1 949 724 5541
michael.finley@colliers.com
CA License No. 01158798

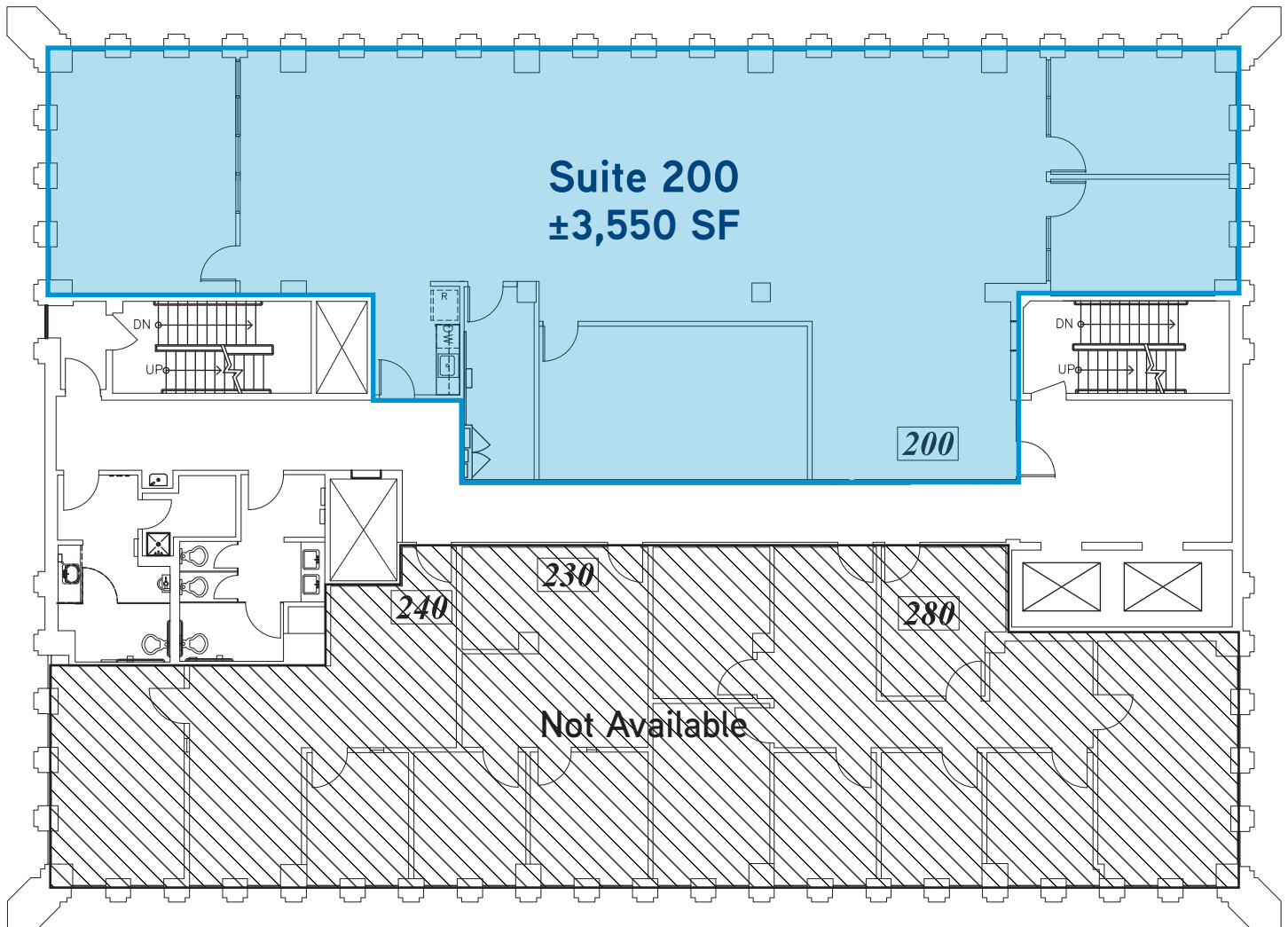
COLLIERS INTERNATIONAL
San Francisco Peninsula
203 Redwood Shores Pkwy, Ste 125
Redwood City, CA 94065
colliers.com/redwoodcity

SHORT-TERM CREATIVE SUBLEASE IN SAN MATEO, CA

1730 S. El Camino Real | Suite 200



Floor Plan



Drawings Not Exact/Not To Scale. The information furnished has been obtained from sources we deem reliable and is submitted subject to errors, omissions and changes. Although Colliers International has no reason to doubt its accuracy, we do not guarantee it. All information should be verified by the recipient prior to lease, purchase, exchange, or execution of legal documents. © 2017 Colliers International

JOHN MCLELLAN
+1 650 486 2223
john.mclellan@colliers.com
CA License No. 01869489

MICHAEL FINLEY
+1 949 724 5541
michael.finley@colliers.com
CA License No. 01158798

COLLIERS INTERNATIONAL
San Francisco Peninsula
203 Redwood Shores Pkwy, Ste 125
Redwood City, CA 94065
colliers.com/redwoodcity

SHORT-TERM CREATIVE SUBLEASE IN SAN MATEO, CA

1730 S. El Camino Real | Suite 200



Property Photos



JOHN MCLELLAN
+1 650 486 2223
john.mclellan@colliers.com
CA License No. 01869489

MICHAEL FINLEY
+1 949 724 5541
michael.finley@colliers.com
CA License No. 01158798

COLLIERS INTERNATIONAL
San Francisco Peninsula
203 Redwood Shores Pkwy, Ste 125
Redwood City, CA 94065
colliers.com/redwoodcity