

SR Plaza

11700 CANTRELL RD, LITTLE ROCK, AR 72223
A Rare West Little Rock Sublease Opportunity



Dickson Flake, CRE, CCIM, SIOR
Broker
501.372.6161 | 706
dickson.flake@colliers.com

Lee Strother, CCIM
Principal & VP of Brokerage
501.372.6161 | 703
lee.strother@colliers.com

Premier WLR Office Location



Property Description

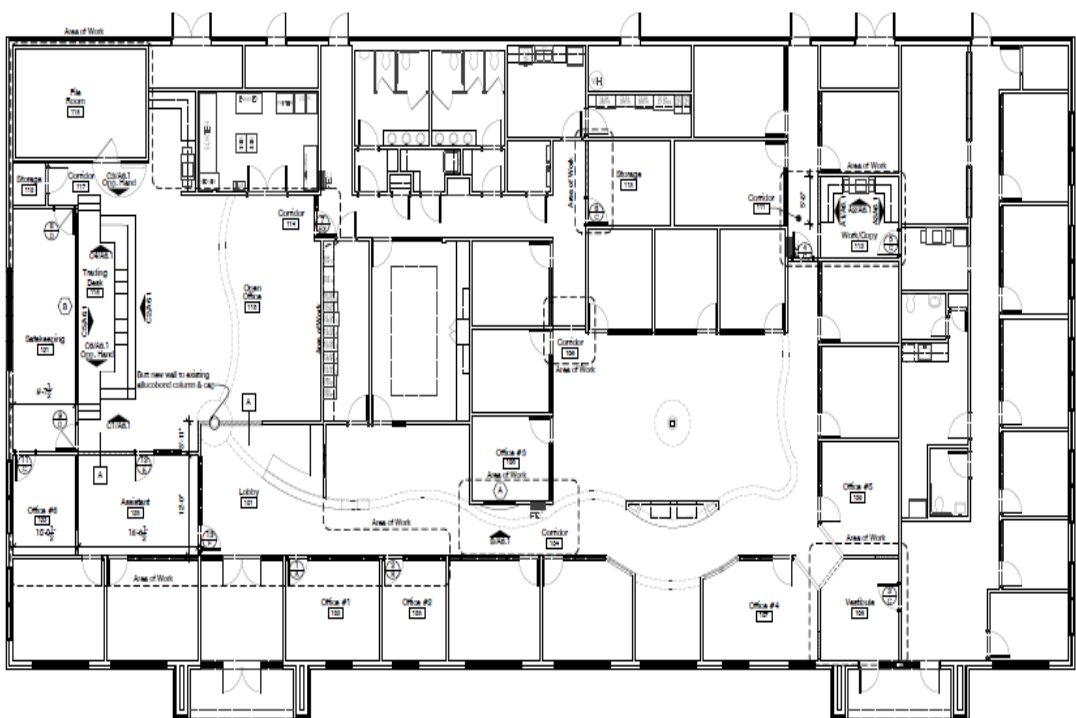
The property is conveniently located on Cantrell Road in west Little Rock, one of the city's most sought-after office locations. Fully equipped as a former "super" branch bank, the facility offers 12,400 square feet of high-end office space with a contiguous auto-bank component. The property is also well positioned at the signalized intersection of Pleasant Ridge Road.

Property Information

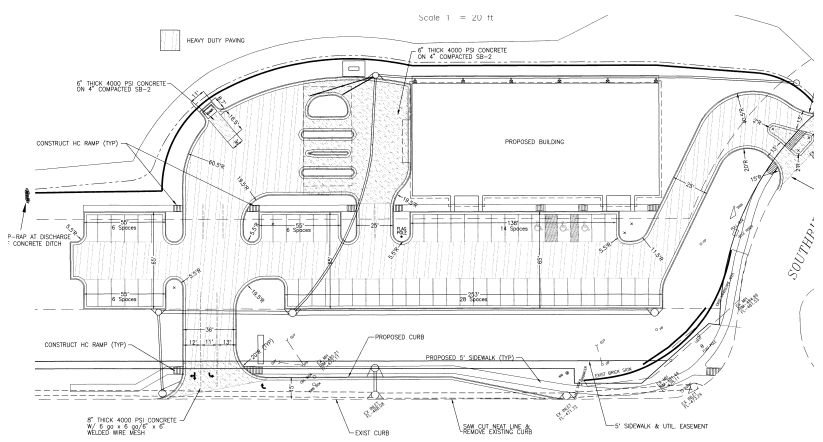
- › Sublease rate: \$26.09/SF, NNN
- › Building size: 12,400 SF
- › Zoned: "POD," Planned Office Development
- › Signalized access
- › Includes parking spaces and auto teller extension
- › Excellent access to I-430
- › Just north of Pleasant Ridge Town Center



Floor Plan



Site Plan



Interior/Exterior Photos



Drive-thru



Lobby



1 Allied Drive,
Suite 1500
Little Rock, AR 72202
501.372.6161
colliers.com/arkansas

