

FOR LEASE > RETAIL

CVS ANCHORED CENTER

213 – 219 E. TWELVE MILE ROAD | ROYAL OAK, MICHIGAN



CONVENIENT NEIGHBORHOOD LOCATION

> PROPERTY HIGHLIGHTS

- 1,140 and 1,200 SF Units Available
- Join CVS, Subway and Cookie Cutters
- 64 Car Parking Lot
- Monument Signage Available

> DEMOGRAPHICS

	1 MILE	2 MILE	3 MILE	5 MILE
POPULATION	16,401	65,580	138,880	352,722
AVG. INCOME	\$103,545	\$96,954	\$89,022	\$83,979
HOUSEHOLDS	8,189	31,509	65,032	156,432

COLLIERS INTERNATIONAL
2 Corporate Drive | Suite 300
Southfield, Michigan 48076

For More Information Call:

LOU FRANGO
PHONE 248 540 1000 EXT 1678
EMAIL lou.franco@colliers.com



colliers.com/detroit



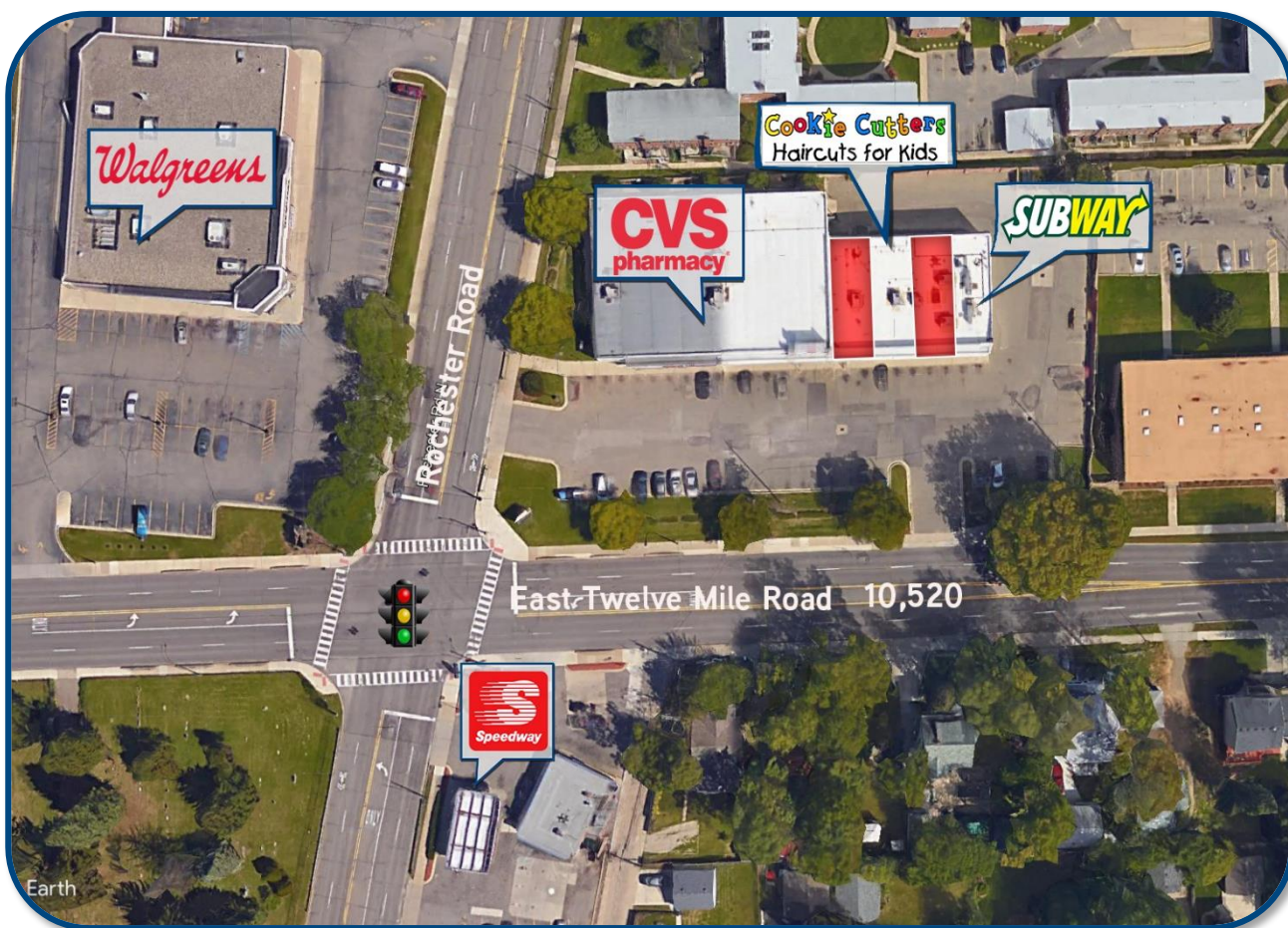
FOR LEASE > RETAIL

CVS ANCHORED CENTER

213 – 219 E. TWELVE MILE ROAD | ROYAL OAK, MICHIGAN



> AERIAL



LOU FRANGO
PHONE 248 540 1000 EXT 1678
EMAIL lou.frango@colliers.com



COLLIERS INTERNATIONAL
2 Corporate Dr. | Suite 300
Southfield, Michigan 48076

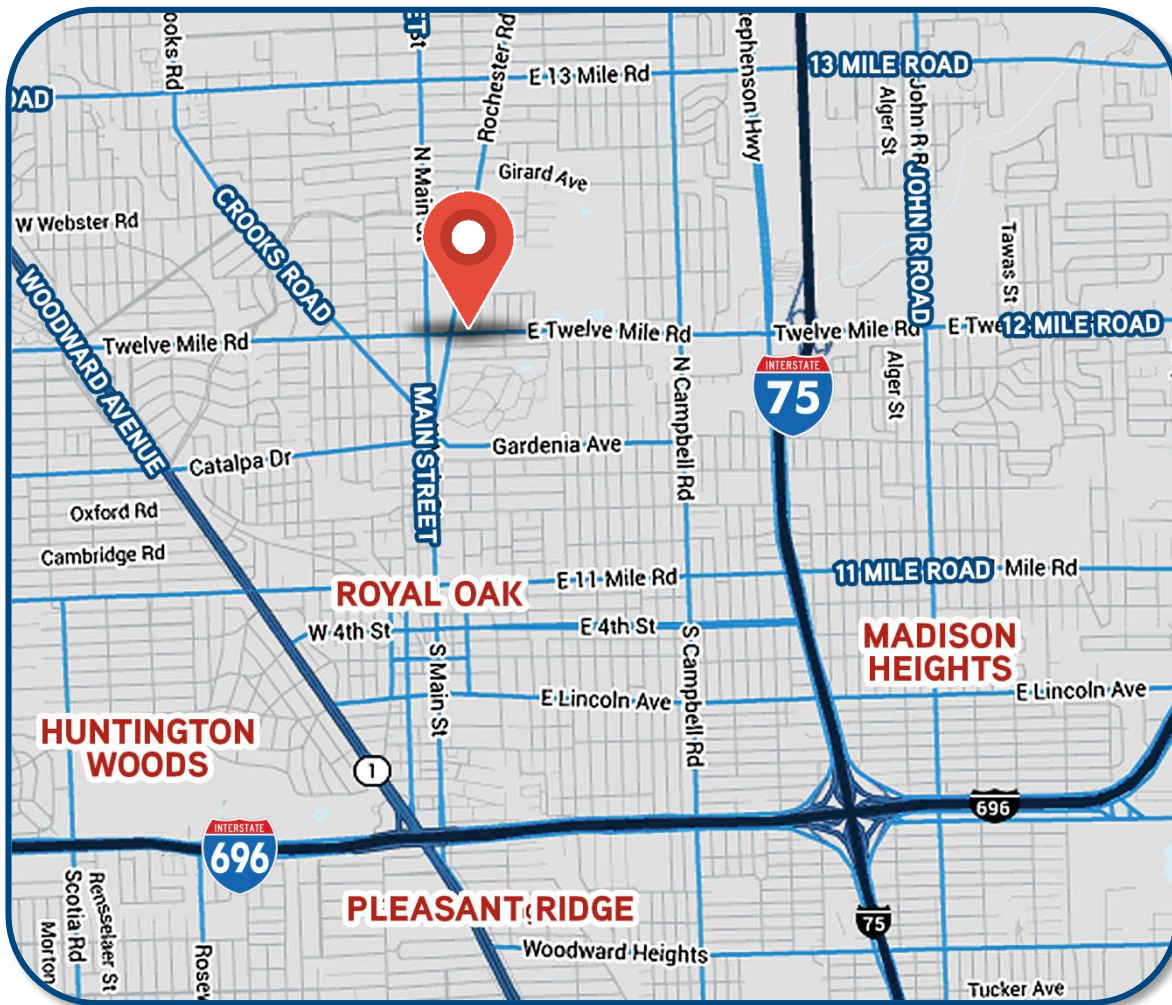
FOR LEASE > RETAIL

CVS ANCHORED CENTER

213 – 219 E. TWELVE MILE ROAD | ROYAL OAK, MICHIGAN



> LOCATION MAP



LOU FRANGO

PHONE 248 540 1000 EXT 1678

EMAIL lou.franco@colliers.com



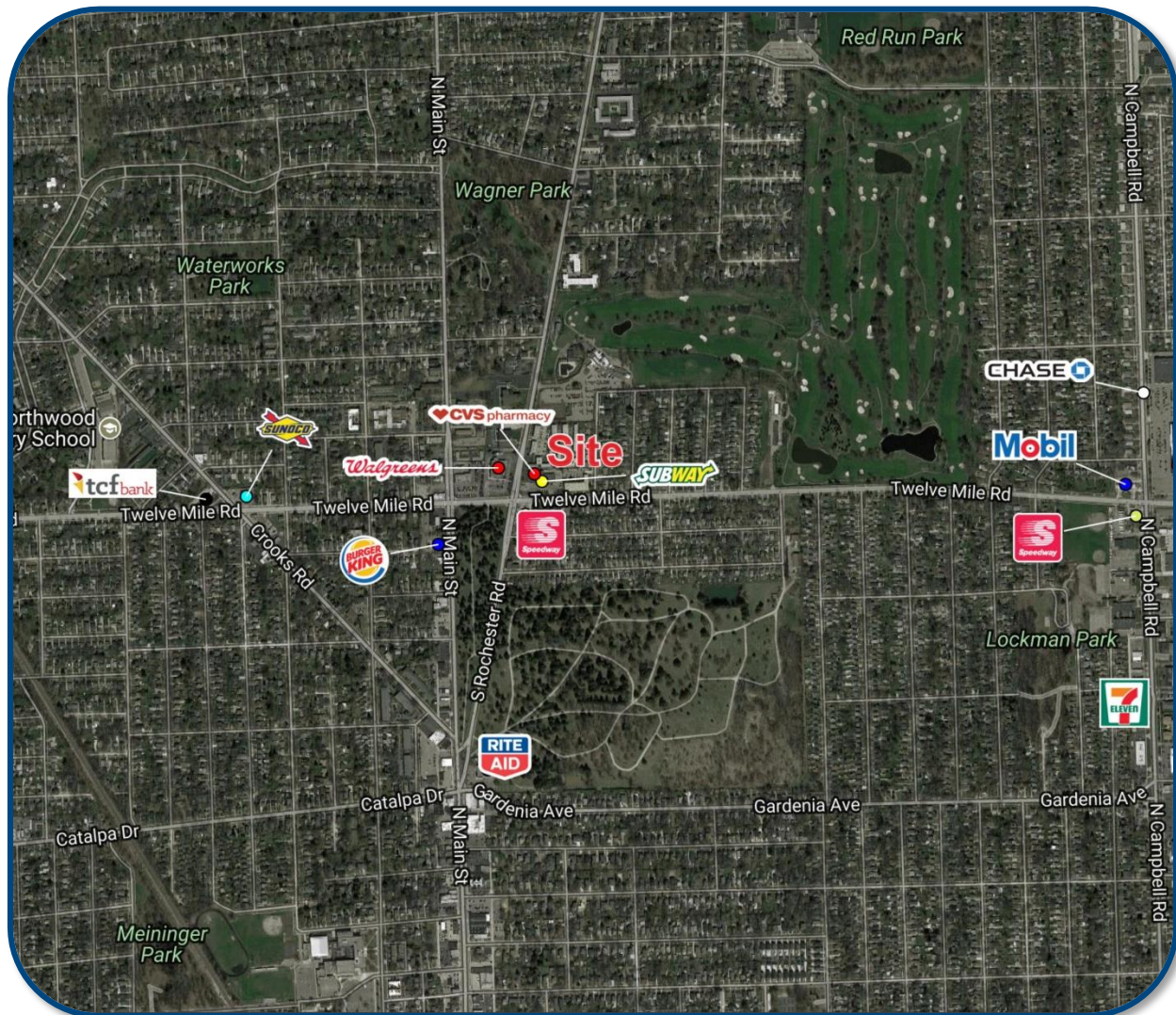
COLLIERS INTERNATIONAL

2 Corporate Dr. | Suite 300
Southfield, Michigan 48076

CVS ANCHORED CENTER



[> MERCHANT MAP](#)



LOU FRANGO
PHONE 248 540 1000 EXT 1678
EMAIL lou.frango@colliers.com



COLLIERS INTERNATIONAL
2 Corporate Dr. | Suite 300
Southfield, Michigan 48076

SUMMARY PROFILE

2000-2010 Census, 2017 Estimates with 2022 Projections

Calculated using Weighted Block Centroid from Block Groups

Lat/Lon: 42.5048/-83.1421

RS1

213-219 E Twelve Mile Rd		1 mi radius	2 mi radius	3 mi radius	5 mi radius
Royal Oak, MI 48073					
POPULATION	2017 Estimated Population	16,401	65,580	138,880	352,722
	2022 Projected Population	16,684	66,625	141,396	360,751
	2010 Census Population	15,748	62,819	133,489	341,016
	2000 Census Population	16,602	65,168	140,409	359,419
	Projected Annual Growth 2017 to 2022	0.3%	0.3%	0.4%	0.5%
	Historical Annual Growth 2000 to 2017	-0.1%	-	-0.1%	-0.1%
	2017 Median Age	36.5	37.6	38.1	39.2
HOUSEHOLDS	2017 Estimated Households	8,189	31,509	65,032	156,432
	2022 Projected Households	8,449	32,470	67,151	162,333
	2010 Census Households	7,689	29,420	61,186	147,972
	2000 Census Households	7,913	29,978	62,945	153,833
	Projected Annual Growth 2017 to 2022	0.6%	0.6%	0.7%	0.8%
	Historical Annual Growth 2000 to 2017	0.2%	0.3%	0.2%	0.1%
RACE AND ETHNICITY	2017 Estimated White	89.9%	88.8%	84.6%	68.6%
	2017 Estimated Black or African American	4.2%	4.9%	8.0%	21.4%
	2017 Estimated Asian or Pacific Islander	3.1%	3.4%	4.2%	6.5%
	2017 Estimated American Indian or Native Alaskan	0.3%	0.2%	0.3%	0.3%
	2017 Estimated Other Races	2.4%	2.6%	3.0%	3.2%
	2017 Estimated Hispanic	2.9%	3.0%	2.9%	2.6%
INCOME	2017 Estimated Average Household Income	\$103,545	\$96,954	\$89,022	\$83,979
	2017 Estimated Median Household Income	\$81,428	\$77,126	\$70,572	\$65,628
	2017 Estimated Per Capita Income	\$51,807	\$46,659	\$41,783	\$37,345
EDUCATION (AGE 25+)	2017 Estimated Elementary (Grade Level 0 to 8)	0.6%	1.5%	2.2%	3.1%
	2017 Estimated Some High School (Grade Level 9 to 11)	3.2%	3.4%	4.0%	5.2%
	2017 Estimated High School Graduate	16.6%	17.4%	20.2%	22.1%
	2017 Estimated Some College	15.8%	18.6%	20.6%	21.1%
	2017 Estimated Associates Degree Only	7.2%	7.8%	7.8%	7.7%
	2017 Estimated Bachelors Degree Only	34.6%	30.7%	27.4%	24.2%
	2017 Estimated Graduate Degree	21.8%	20.6%	17.8%	16.6%
BUSINESS	2017 Estimated Total Businesses	497	2,983	7,209	21,324
	2017 Estimated Total Employees	3,590	24,591	77,336	228,464
	2017 Estimated Employee Population per Business	7.2	8.2	10.7	10.7
	2017 Estimated Residential Population per Business	33.0	22.0	19.3	16.5

This report was produced using data from private and government sources deemed to be reliable. The information herein is provided without representation or warranty.