



Accelerating success.



**For Lease:**  
Industrial Manufacturing  
3050 SE 61st Court | Hillsboro, Oregon  
10,432 SF Warehouse | 3,136 SF Office

**Mike Thomas**  
+1 503 499 0059  
mike.thomas@colliers.com

**Karen Lisignoli**  
+1 503 740 1679  
karen.lisignoli@colliers.com



# Industrial Manufacturing

3050 SE 61st Court | Hillsboro, Oregon

Located on a Cul-De-Sac

1.28 Acres

10,432 SF  
Warehouse

3,136 SF  
Office

28 Parking  
Spaces

Surplus  
Green Space

Colliers



AVAILABLE Q1 2023

## HIGHLIGHTS

- 12,000 SF Shell with
- 3,136 SF 2-story office
- 18'3" clear height
- 1.28 acres
- (2) 14 x 14 grade doors
- 28 parking spaces
- 8" reinforced concrete floors
- Heavy Power

## Availability

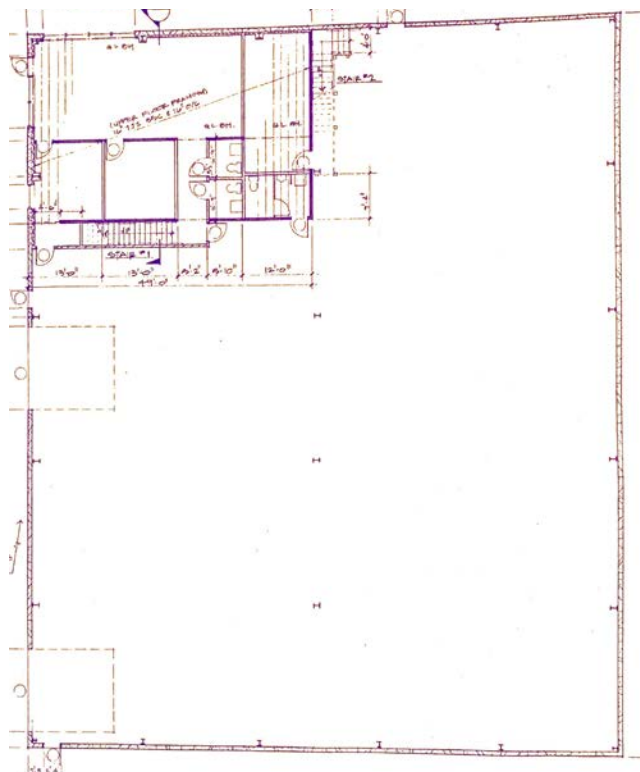
3050 SE 61st Court | Hillsboro, OR

Warehouse SF 10,432 RSF

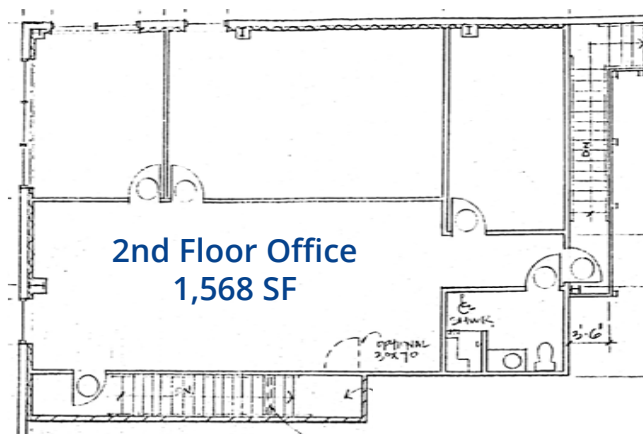
2-Story Office SF 3,136 RSF

Rates Call Brokers

13,568 SF Available  
10,432 SF Manufacturing/Warehouse Space  
3,136 SF Office



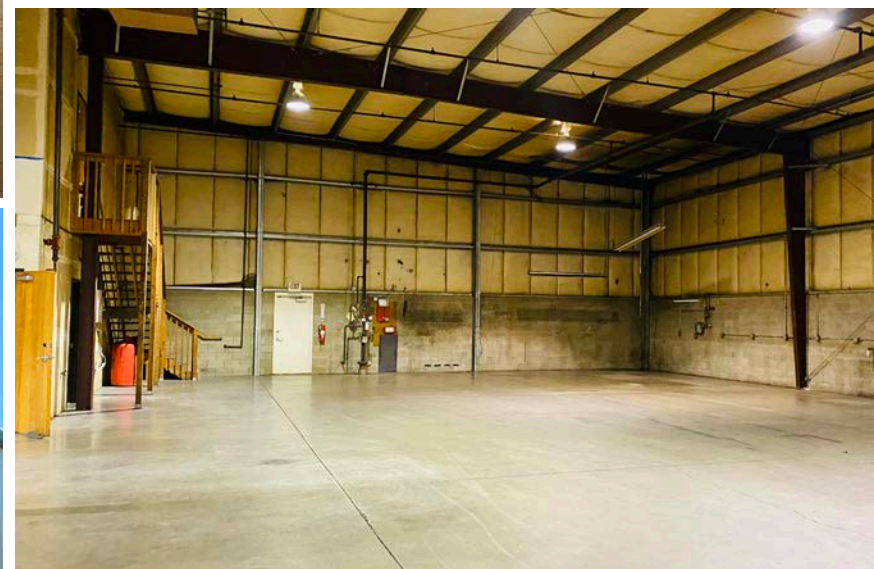
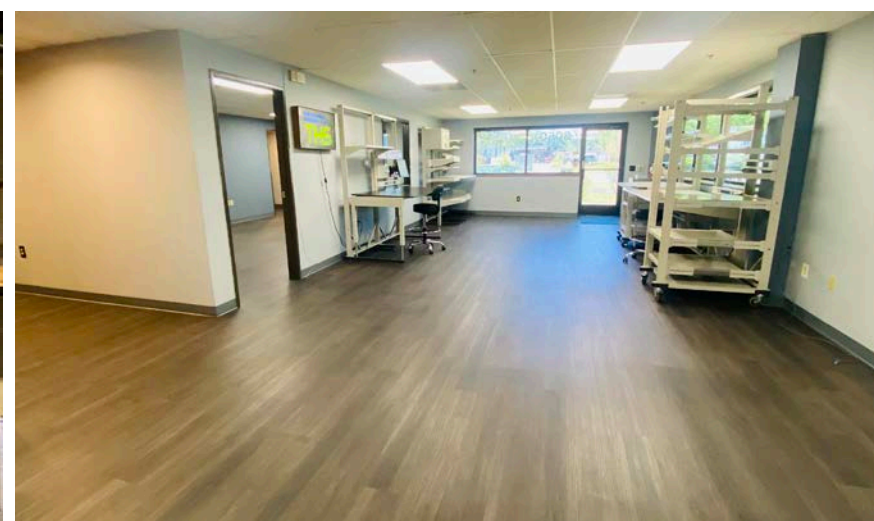
Main Floor - Warehouse & Office



2nd Floor Office  
1,568 SF



# Photos





# Area Overview



Century High School

Ladd Acres  
Elementary

SE TUALATIN VALLEY HIGHWAY

SE ALEXANDER ST

SE CENTURY BLVD

3050 SE 61st Court

Far West  
Recycling

8

10

REED'S  
CROSSING®

Colliers





For more information, contact:

**Mike Thomas**  
+1 503 499 0059  
[mike.thomas@colliers.com](mailto:mike.thomas@colliers.com)

**Karen Lisignoli**  
+1 503 740 1679  
[karen.lisignoli@colliers.com](mailto:karen.lisignoli@colliers.com)



851 SW Sixth Avenue, Suite 1200  
Portland, OR 97204  
Main: +1 503 223 3123  
[www.colliers.com/portland](http://www.colliers.com/portland)