

FOR LEASE > OFFICE SPACE

# Provo Office Building

333 WEST 2230 NORTH | PROVO, UTAH 84604



## Property Information

- > 26,266 SF Office space for lease
- > Suites from 1,933 SF to Full Floors 8,755 SF
- > Executive Suites available on the second floor
- > Lease Rate: \$17/SF/Full Service for first and second
- > floor, \$18.50/SF/Full Service for third floor
- > Close to BYU Beautiful Mountain views
- > Easy Access to University parkway and University
- > Avenue
- > Ample Parking
- > Elevator
- > Close to many amenities and services



**Cody Black**  
+1 801 687 0094  
cody.black@colliers.com

**Shad Webb**  
+1 435 459 0212  
shad.webb@colliers.com

**John Monson**  
801.915.0122  
john.monson@colliers.com

**Colliers International**  
6550 S Millrock Dr | Suite 200  
Salt Lake City, UT 84121  
P: +1 801 947 8300

# Provo Office Building

333 WEST 2230 NORTH | PROVO, UTAH 84604

## > Floor Plan





FOR LEASE > OFFICE SPACE

# Provo Office Building

333 WEST 2230 NORTH | PROVO, UTAH 84604



**Cody Black**  
+1 801 687 0094  
cody.black@colliers.com

**Shad Webb**  
+1 435 459 0212  
shad.webb@colliers.com

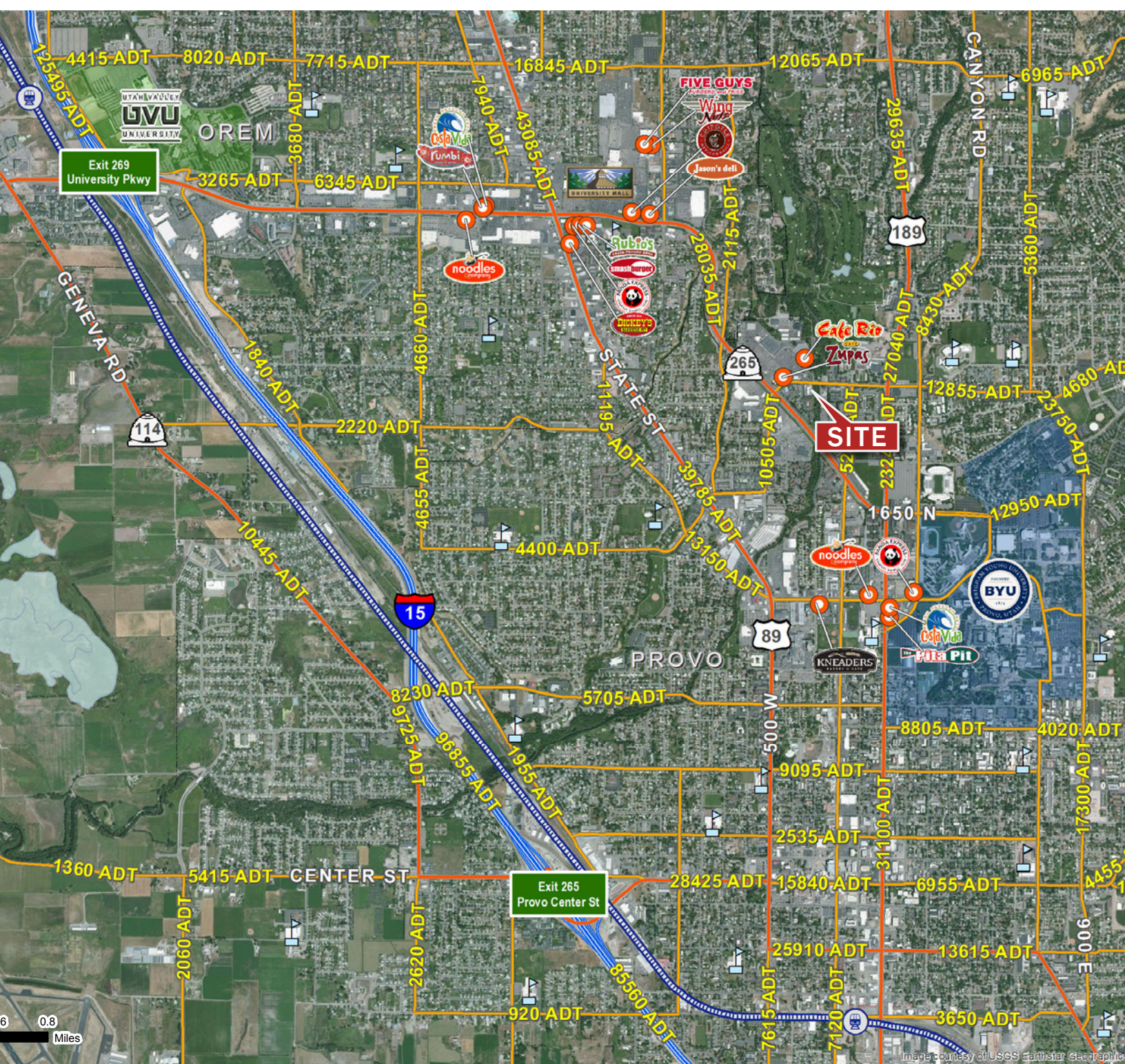
**John Monson**  
801.915.0122  
john.monson@colliers.com

*Colliers International*  
6550 S Millrock Dr | Suite 200  
Salt Lake City, UT 84121  
P: +1 801 947 8300



# Provo Office Building

333 WEST 2230 NORTH | PROVO, UTAH 84604



This document has been prepared by Colliers International for advertising and general information only. Colliers International makes no guarantees, representations or warranties of any kind, expressed or implied, regarding the information including, but not limited to, warranties of content, accuracy and reliability. Any interested party should undertake their own inquiries as to the accuracy of the information. Colliers International excludes unequivocally all inferred or implied terms, conditions and warranties arising out of this document and excludes all liability for loss and damages arising there from. This publication is the copyrighted property of Colliers International and/or its licensor(s). ©2017. All rights reserved.

Colliers International  
6550 S Millrock Dr | Suite 200  
Salt Lake City, UT 84121  
P: +1 801 947 8300

