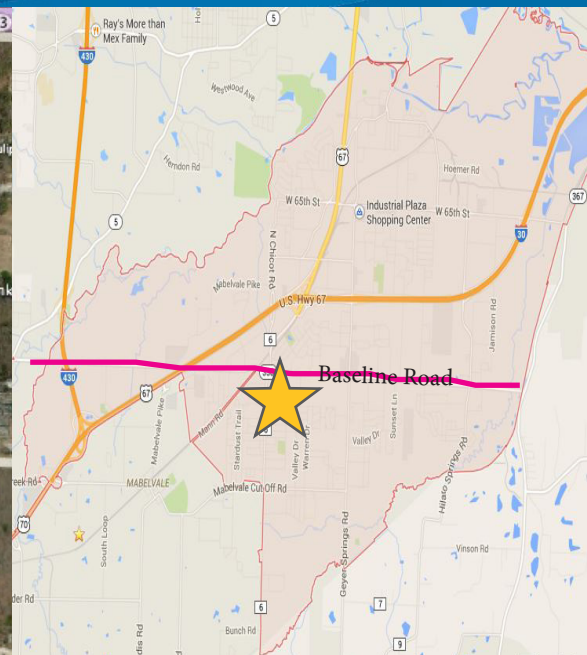
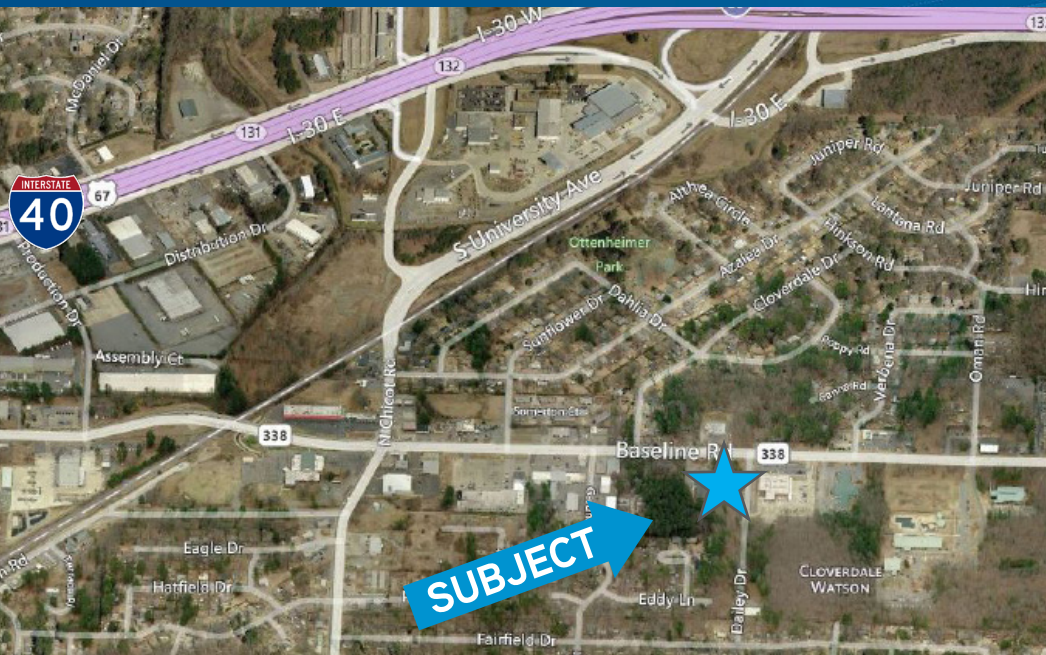


FOR SALE

# Office Land



6917 BASELINE ROAD, LITTLE ROCK, AR 72209



## Offering

Sales Price: \$140,000

Land Area: 1.101 Acres

## Information & Amenities

- Zoned: "O-3", Office
- Traffic Count: approximately 21,000 VPD on Baseline Road
- Utilities on site
- Located next to new post office
- Corner lot

2017	1 mile radius	3 mile radius	5 mile radius
Population	11,314	41,781	90,156
Total Households	4,070	15,132	33,765
Average Household Income	\$40,979	\$43,974	\$49,874

This document has been prepared by Colliers International for advertising and general information only. Colliers International makes no guarantees, representations or warranties of any kind, expressed or implied, regarding the information including, but not limited to, warranties of content, accuracy and reliability. Any interested party should undertake their own inquiries as to the accuracy of the information. Colliers International excludes unequivocally all inferred or implied terms, conditions and warranties arising out of this document and excludes all liability for loss and damages arising there from.

## Contact Us

### LISTING AGENTS:

JUSTIN BENTLEY, CCIM  
501 372 6161 | EXT. 739  
LITTLE ROCK, AR  
[justin.bentley@colliers.com](mailto:justin.bentley@colliers.com)

DREW HOLBERT, CCIM, SIOR  
501 372 6161 | EXT. 756  
LITTLE ROCK, AR  
[drew.holbert@colliers.com](mailto:drew.holbert@colliers.com)

**COLLIERS INTERNATIONAL**  
1 Allied Drive, Suite 1500  
Little Rock, AR 72202  
[www.colliers.com/arkansas](http://www.colliers.com/arkansas)