



300

Alexander Park

PRINCETON, NJ

38,000 SF, Three Story,
Class A Building

19,000+ SF Available - Divisible

Easily Accessible from
Public Transit & Highways

Covered Parking



[CLICK TO
VIEW THE
VIRTUAL TOUR](#)

Colliers

Class A Office Space

- Perfect for general or medical offices, accounting, legal, financial, technology, and professional services industries
- Beautifully maintained property
- Café and walking trail located within office park
- Onsite surface and covered parking
- Onsite ownership

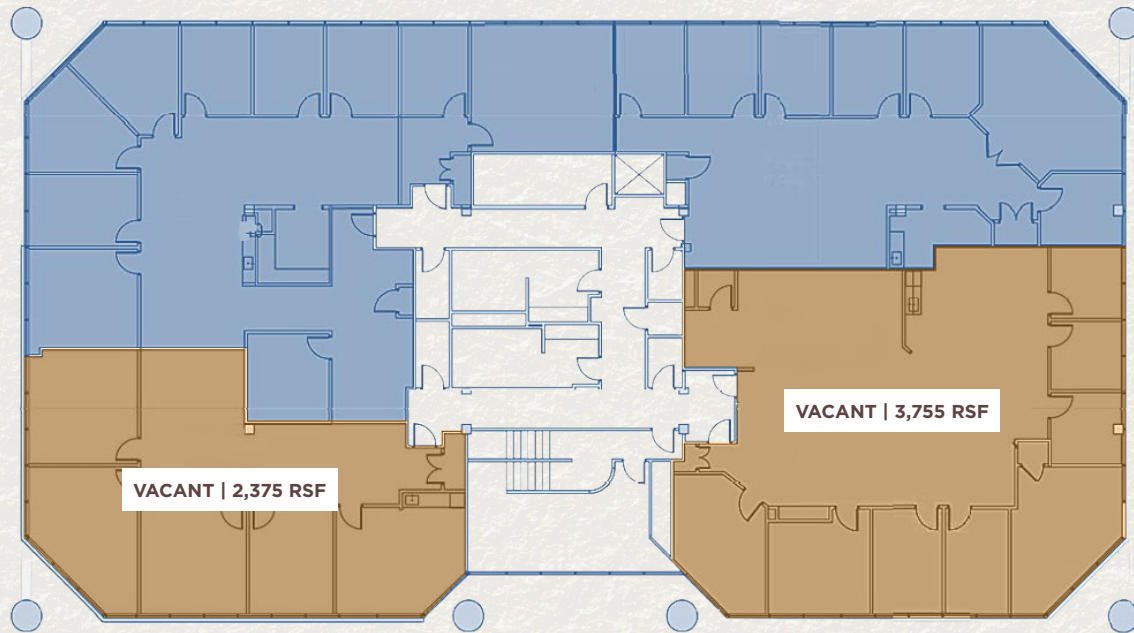
APP



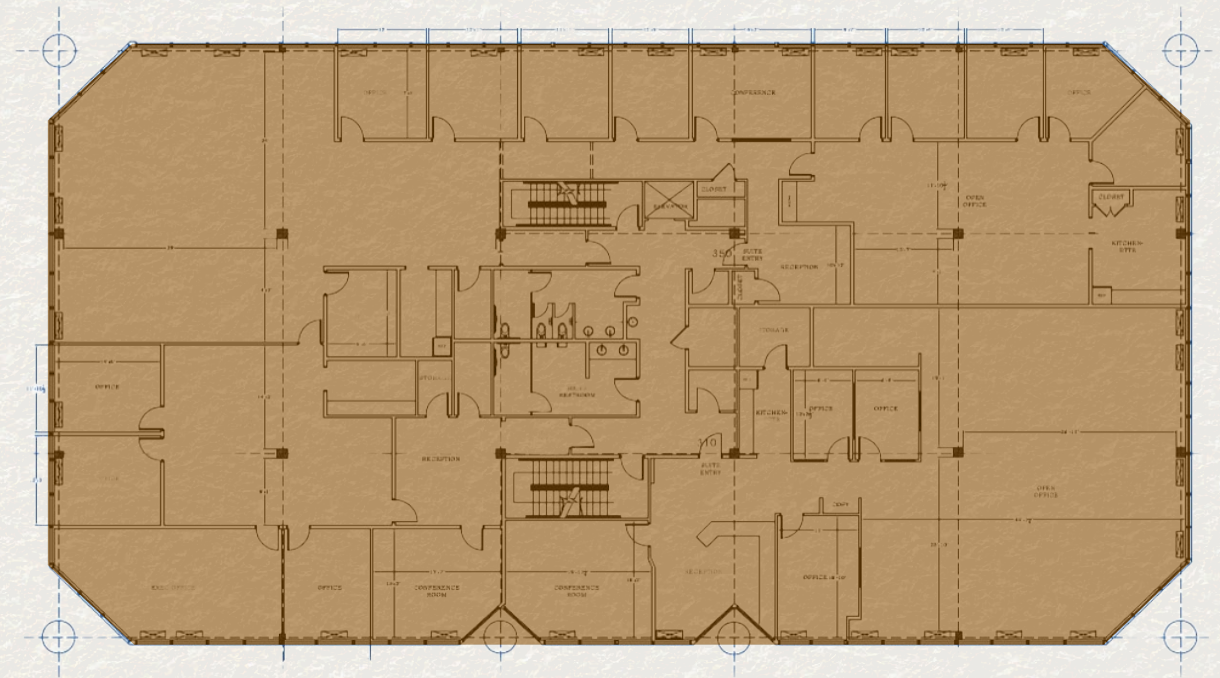


Floor Plans

2ND FLOOR | 2,375 & 3,755 SF



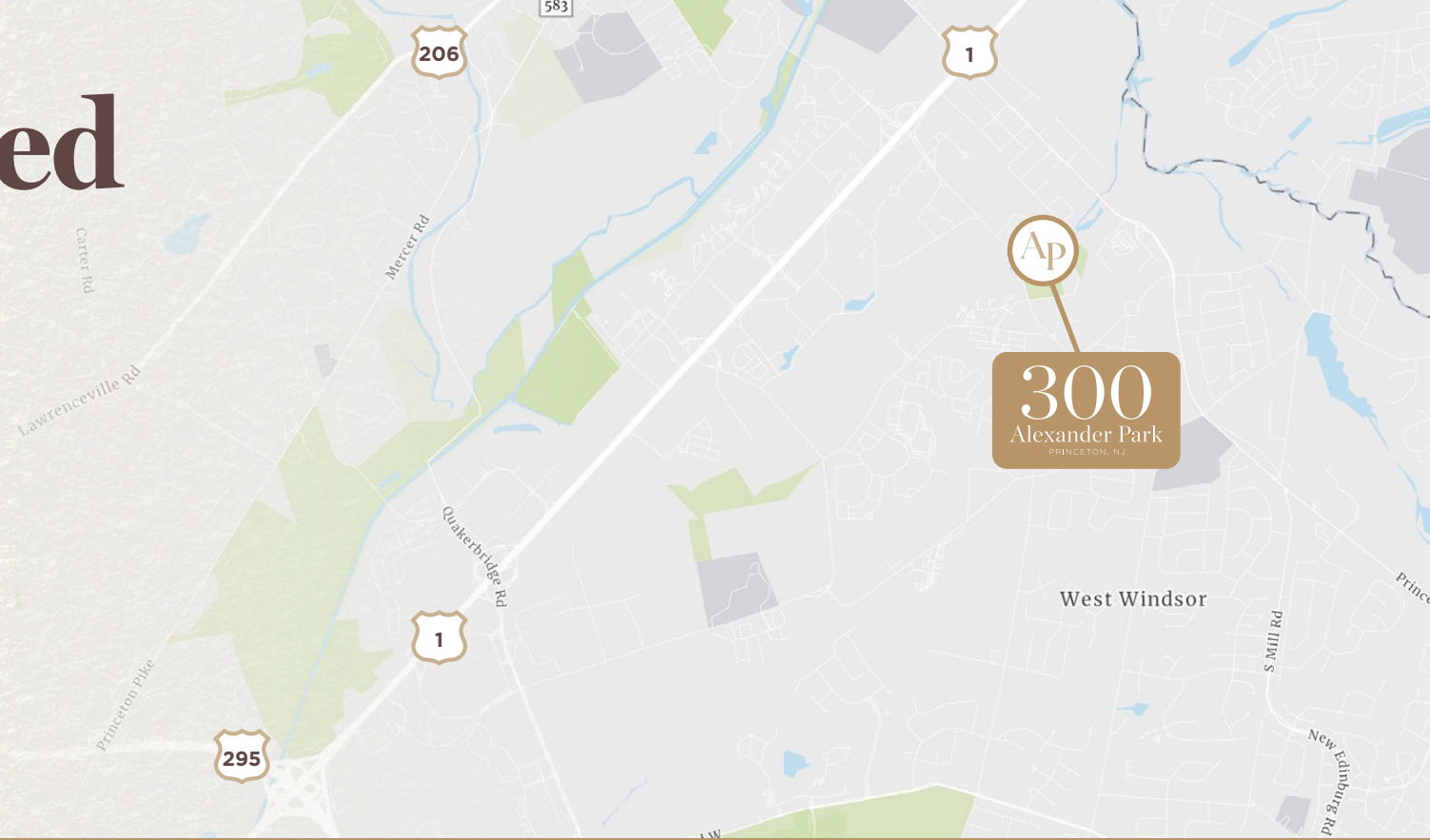
3RD FLOOR | 13,133 SF (DIVISIBLE)



Strategically Located

AREA HIGHLIGHTS

- Just over one mile to Princeton Junction train station
- Approximately one mile to Route 1 North and South
- Approximately 2 miles to downtown Princeton
- Convenient to restaurants QSR and shopping including Princeton Market Fair
- Adjacent to Carnegie Center





300

Alexander Park

PRINCETON, NJ

Doug Twyman, SIOR
Licensed Broker Salesperson
+1 732 236 8899 (C)
doug.twyman@colliers.com

Chidi Egesionu
Licensed Salesperson
+1 732 734 0492 (C)
chidi.egesionu@colliers.com



10 WOODBRIDGE CENTER DRIVE, SUITE 1010
WOODBIDGE, NJ 07095 | U.S.
732 807 0400

500 ALEXANDER PARK DRIVE, SUITE 101
PRINCETON, NJ 08540 | U.S.
609 269 1111

No representation is made as to the accuracy of the information furnished herein and same is submitted subject to errors, omissions, change of prices, rental, or other conditions, prior sale, lease, sublease, and/or withdrawal without notice. While every attempt is made to ensure accuracy, the floor plan(s) is for guidance only. The measurements, dimensions, specifications, and other data shown are approximate and may not be to scale. We assume no responsibility for the accuracy of the floor plan(s) or for any action taken in reliance thereon. The floor plan(s) do not create any representation, warranty or contract. All parties should consult a professional, such as an architect, to verify the information contained herein. The furnishing of this information shall not be deemed a hiring. A commission in accordance with our principal's schedule of rates and conditions will be paid to the procuring Broker who executes our or our principal's brokerage agreement, subject to a fully consummated transaction upon terms and conditions acceptable to our principal. Colliers International NJ LLC