

RETAIL SPACES > FOR LEASE

# Laniakea Plaza

94-1221 KA UKA BOULEVARD, WAIPAHU, HI 96797



**CONFIDENTIAL LISTING**  
Do not approach restaurant customers  
or employees



## Property Description

Laniakea Plaza is located at a vibrant Waipio neighborhood with Costco next door. Tenants include Starbucks, Panda Express, Ninja Sushi, Territorial Savings Bank, Good Year, Fantastic Sams, and Fat Boys. Parking for tenants and customers is right in front of the center with easy ingress and egress from Ka Uka Boulevard.

Area:	Waipio
TMK:	(1) 9-4-127: 28 & 29
Zoning:	IMX-1
Available Space:	B-101A (511 SF)
Base Rent:	Negotiable
Operating Expenses:	\$0.79 PSF/Month (estimated)
Percentage Rent:	8%
Term:	5 Years

## Contact Us

CATHY G. KONG (S)  
Retail Services Group &  
Shopping Center Division  
808 541 7392  
[cathy.kong@colliers.com](mailto:cathy.kong@colliers.com)

NATHAN A. FONG (B)  
Retail Services Group &  
Shopping Center Division  
808 295 2582  
[nathan.fong@colliers.com](mailto:nathan.fong@colliers.com)

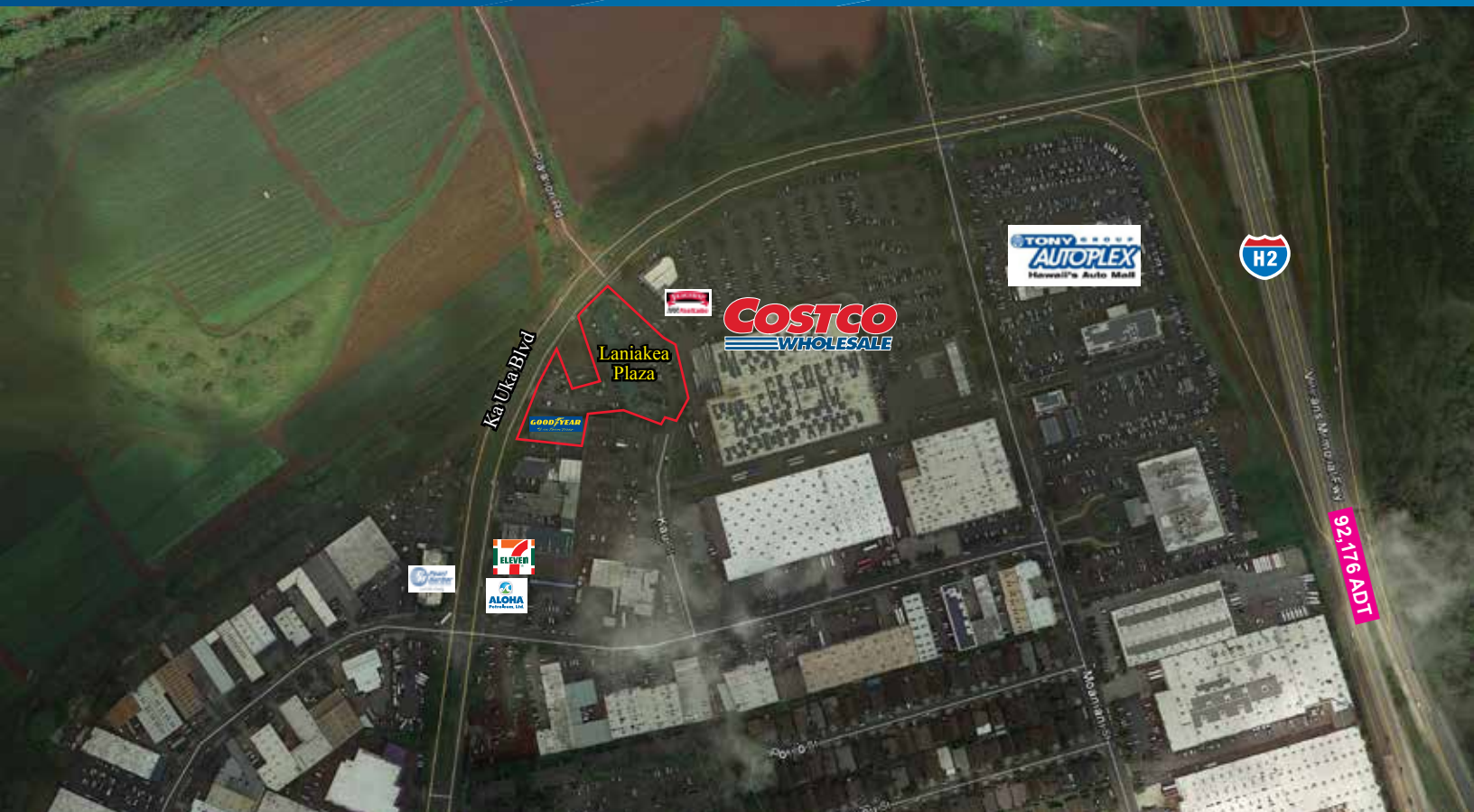
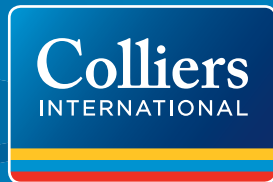


**COLLIERS INTERNATIONAL**  
220 South King Street, Suite 1800  
Honolulu, HI 96813  
[www.colliershawaii.com](http://www.colliershawaii.com)

RETAIL SPACES > FOR LEASE

# Laniakea Plaza

94-1221 KA UKA BOULEVARD, WAIPAHU, HI 96797



## 2016 DEMOGRAPHICS

	1 Mile	3 Miles	5 Miles
Estimated Population:	9,102	104,740	200,573
Average Household Income:	\$101,793	\$105,512	\$103,185
Median Age:	36.1 yrs	38.6 yrs	37.3 yrs
Total Households:	3,326	31,430	59,999
Household w/Children:	33.1%	39.1%	39.8%
Average Household Size:	2.7	3.3	3.3
Total Housing Units:	3,418	32,177	61,410

CATHY G. KONG (S)  
Retail Services Group &  
Shopping Center Division  
808 541 7392  
[cathy.kong@colliers.com](mailto:cathy.kong@colliers.com)

NATHAN A. FONG (B)  
Retail Services Group &  
Shopping Center Division  
808 295 2582  
[nathan.fong@colliers.com](mailto:nathan.fong@colliers.com)



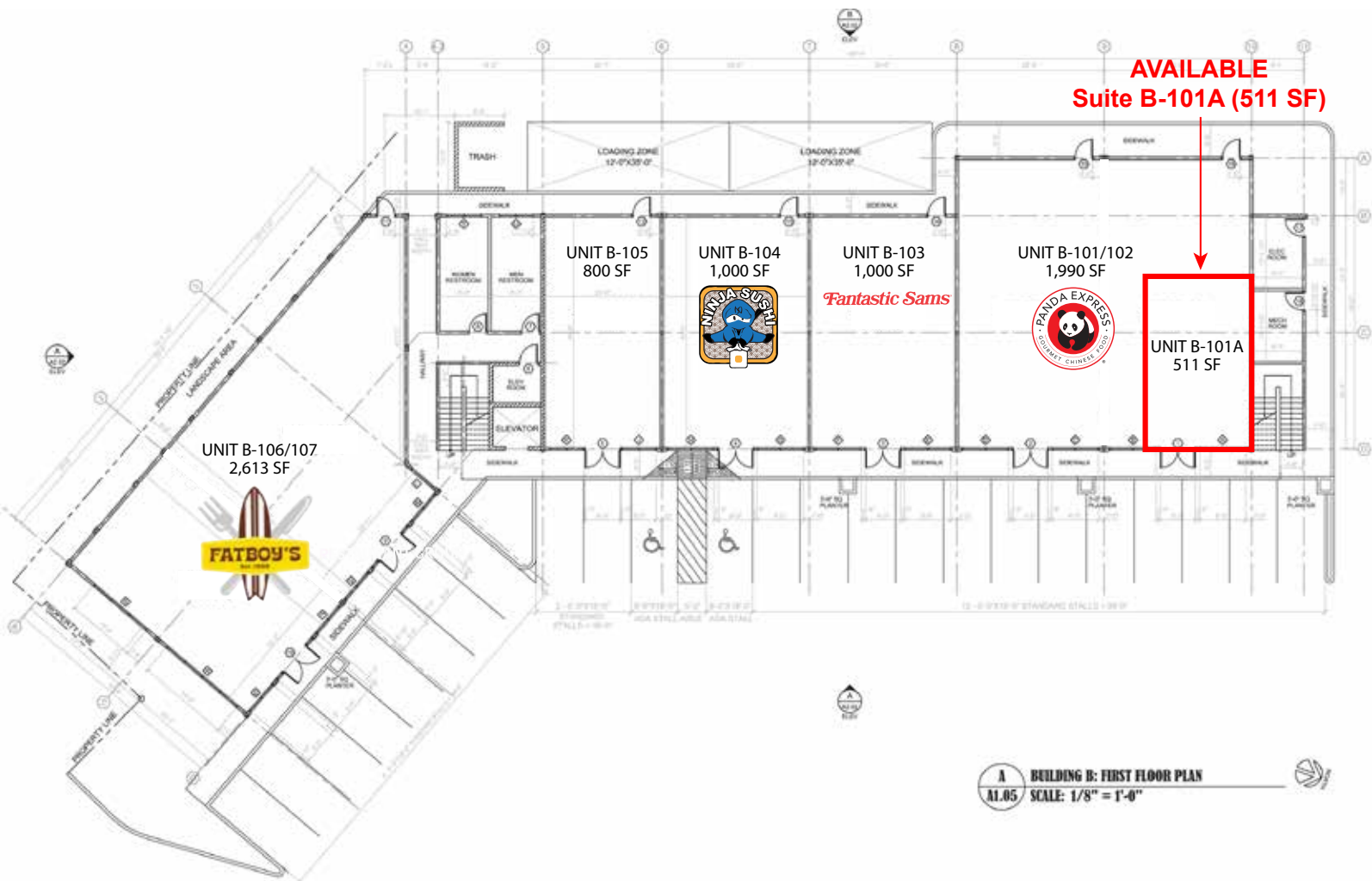
COLLIERS INTERNATIONAL  
220 South King Street, Suite 1800  
Honolulu, HI 96813  
[www.colliershawaii.com](http://www.colliershawaii.com)



RETAIL SPACES > FOR LEASE

# Laniakea Plaza

94-1221 KA UKA BOULEVARD, WAIPAHU, HI 96797



## Contact Us

CATHY G. KONG (S)  
Retail Services Group &  
Shopping Center Division  
808 541 7392  
[cathy.kong@colliers.com](mailto:cathy.kong@colliers.com)

NATHAN A. FONG (B)  
Retail Services Group &  
Shopping Center Division  
808 295 2582  
[nathan.fong@colliers.com](mailto:nathan.fong@colliers.com)



COLLIERS INTERNATIONAL  
220 South King Street, Suite 1800  
Honolulu, HI 96813  
[www.colliershawaii.com](http://www.colliershawaii.com)