



**FOR LEASE** | 1515 SOUTH 700 EAST SALT LAKE CITY

## Trolley Corners

UNIQUE CREATIVE / CONTEMPORARY TROLLEY OFFICE SPACE

- \$22.00 PSF FULL SERVICE
- 587 – 12,155 RSF Max Contiguous
- Unique Architectural Style with Exposed Brick and Open Ceilings
- Easy Access to I-15 and I-80,
- Walking Distance to TRAX
- Several Spaces in Move In Condition
- Across the street from the Iconic Trolley Square
- Nearby: Whole Foods, Wells Fargo, and other fantastic shopping Amenities

Fiber in the building:



CenturyLink

Google fiber



**Greg Pavich**

+1 801 947 8300

greg.pavich@colliers.com

**Travis Yates**

+1 801 947 8336

travis.yates@colliers.com

**Chris Kirk, SIOR**

+1 801 947 8385

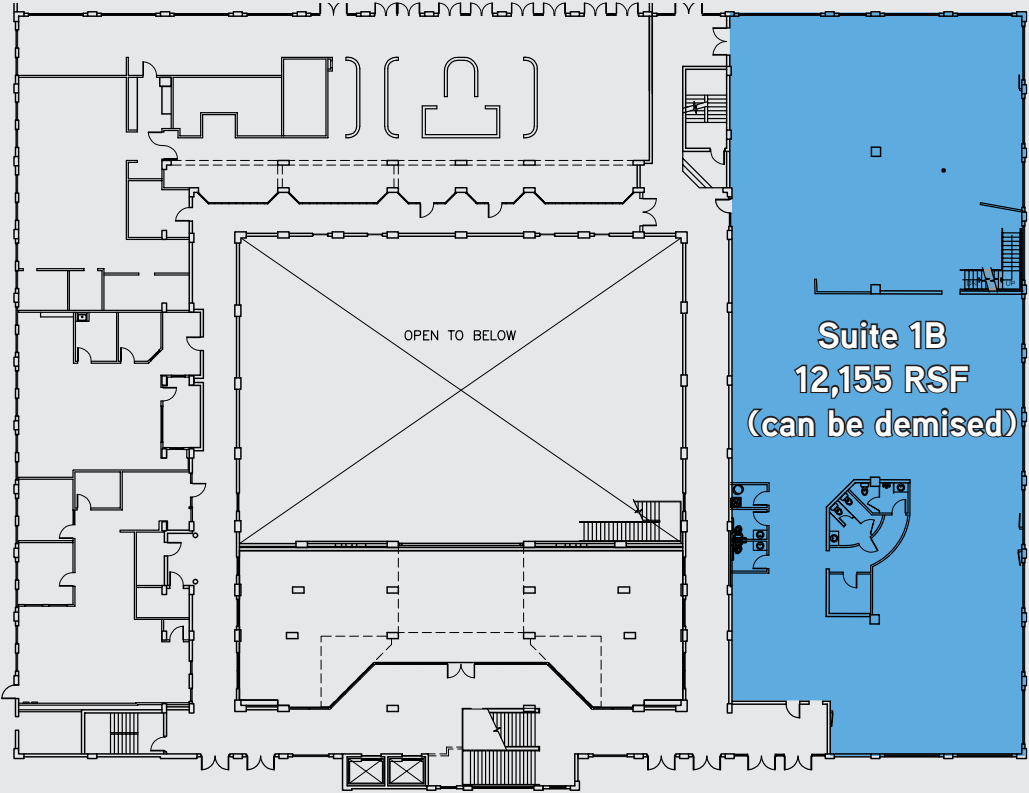
chris.kirk@colliers.com

*Colliers International*  
6550 S Millrock Dr | Suite 200  
Salt Lake City, UT 84121  
P: +1 801 947 8300

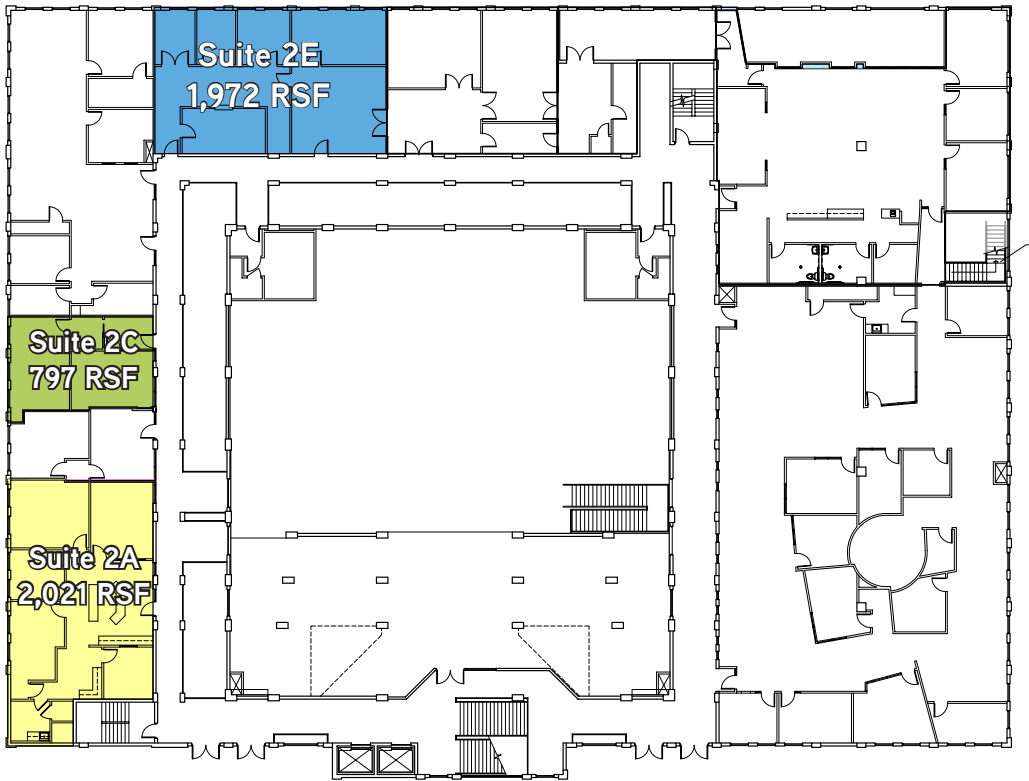


Accelerating success.

FIRST FLOOR



SECOND FLOOR





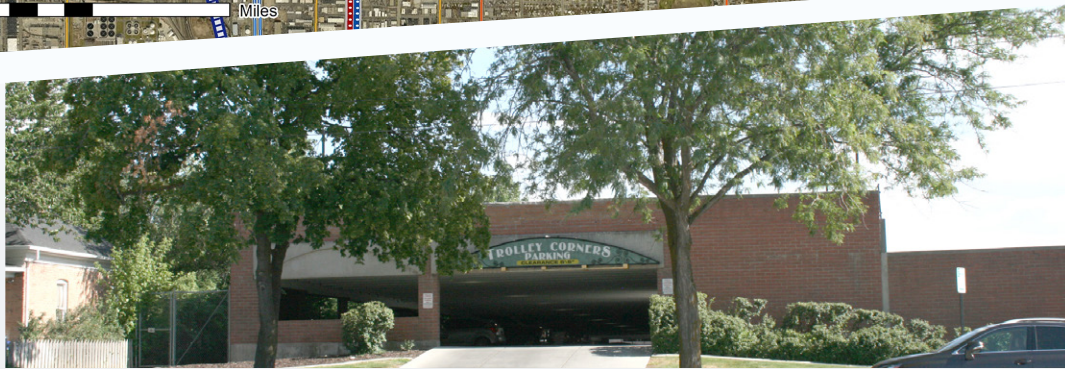
THIRD FLOOR











Contact us:

**Greg Pavich**

+1 801 947 8300

greg.pavich@colliers.com

**Travis Yates**

+1 801 947 8336

travis.yates@colliers.com

**Chris Kirk, SIOR**

+1 801 947 8385

chris.kirk@colliers.com

Colliers International  
6550 S Millrock Dr | Suite 200  
Salt Lake City, UT 84121  
P: +1 801 947 8300



Accelerating success.

This document has been prepared by Colliers International for advertising and general information only. Colliers International makes no guarantees, representations or warranties of any kind, expressed or implied, regarding the information including, but not limited to, warranties of content, accuracy and reliability. Any interested party should undertake their own inquiries as to the accuracy of the information. Colliers International excludes unequivocally all inferred or implied terms, conditions and warranties arising out of this document and excludes all liability for loss and damages arising there from. This publication is the copyrighted property of Colliers International and/or its licensor(s). ©2017. All rights reserved.