

AVAILABLE FOR SALE
±26,846 SF 2-BUILDING COMPLEX



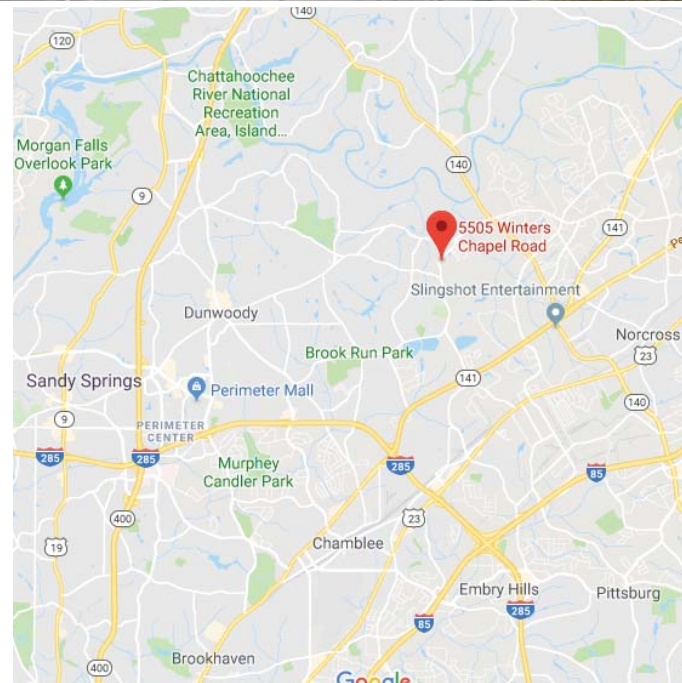
5505 Winters Chapel Road

PEACHTREE CORNERS, GA 30360



Key Features / Highlights

- › Price drastically reduced
- › Motivated seller
- › Building 1 built in 1995; Building 2 built in 2007
- › ±3.79 Acres
- › Over 130 parking spaces with room to grow
- › Sanctuary will seat over 200
- › Building 1: 9 classrooms and a principal/pastor's office
- › Building 2: 7 classrooms (1 large classroom divisible to 2, each with sink), a business office with 2 additional offices
- › Playground equipment available
- › Full kitchen and fellowship hall in Building 1

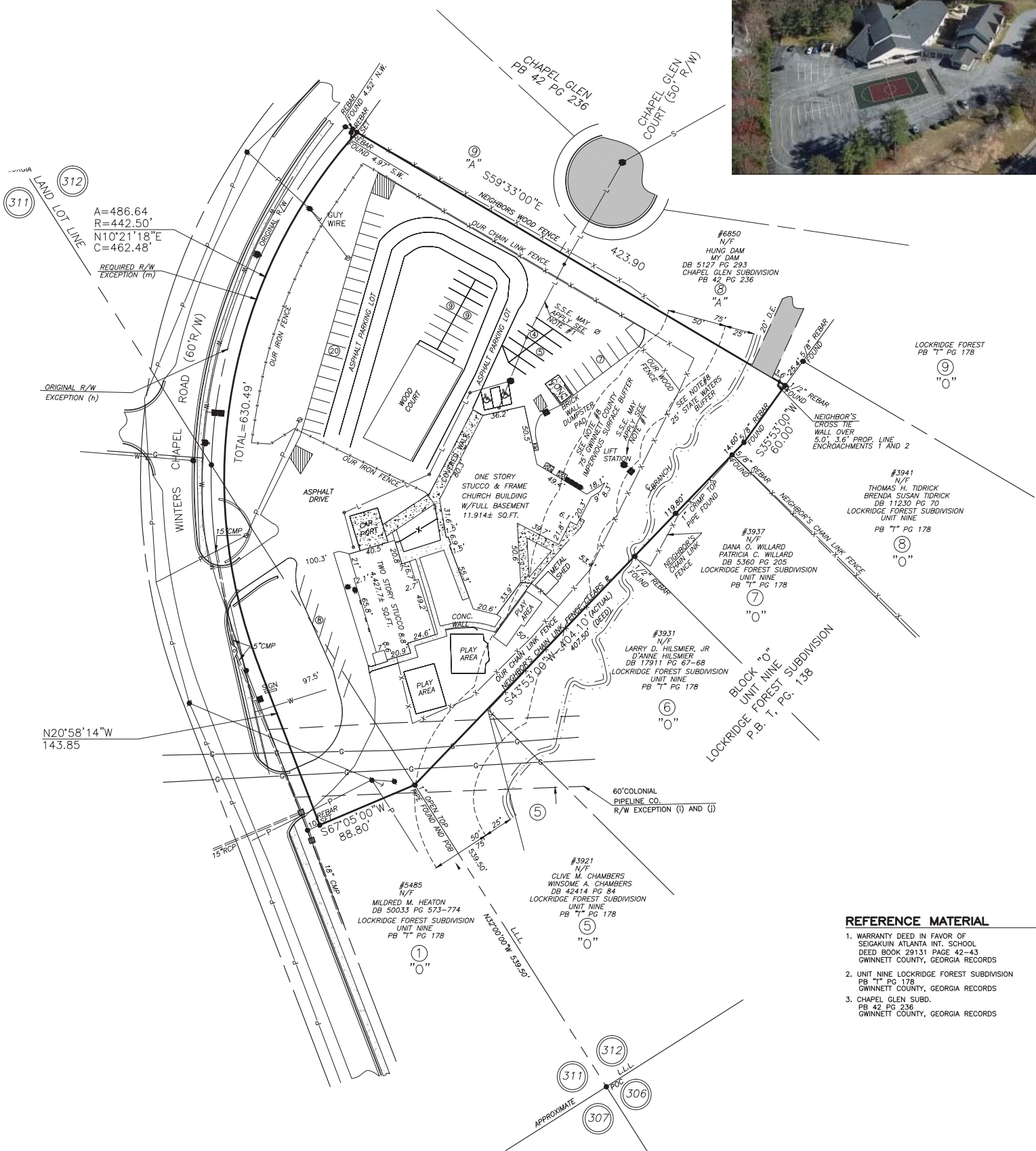


[Click to view property video](#)

JOSH GREGORY
+ 1 404 877 9210 DIRECT
josh.gregory@colliers.com

KAY HOCUTT
+ 1 404 877 9295 DIRECT
kay.hocutt@colliers.com

FOR SALE > 5505 WINTERS CHAPEL ROAD > SURVEY



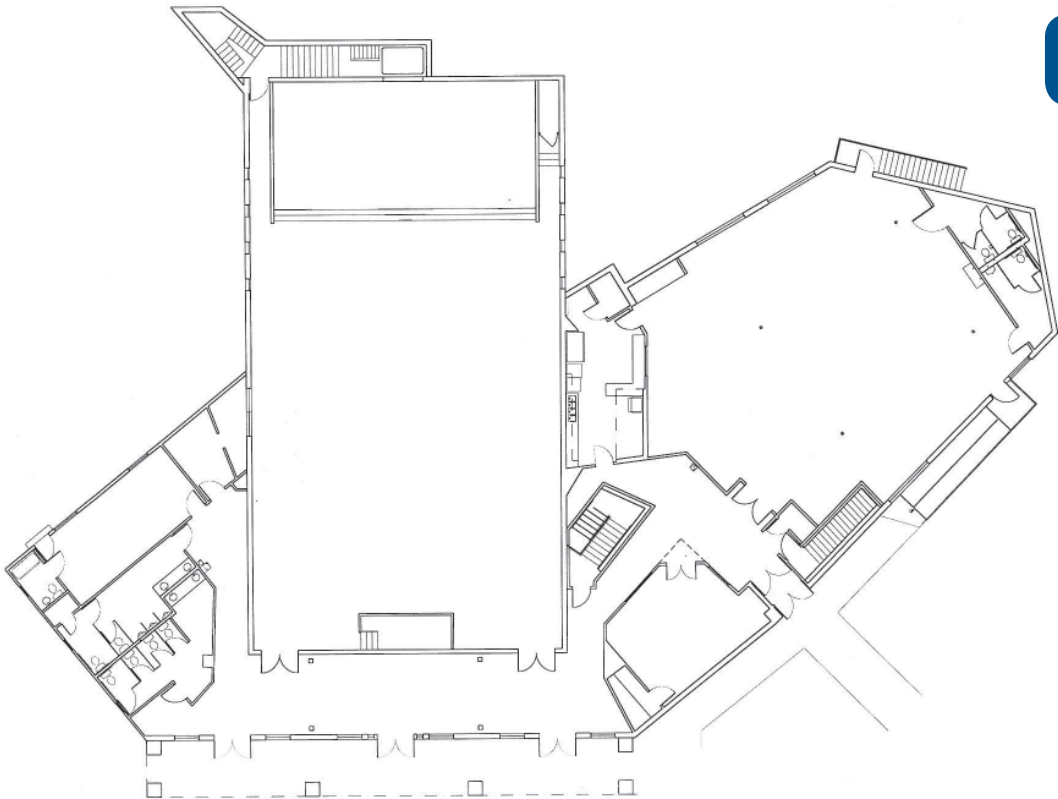
- REFERENCE MATERIAL**
1. WARRANTY DEED IN FAVOR OF SEIGAKUIN ATLANTA INT. SCHOOL DEED BOOK 29131 PAGE 42-43 GWINNETT COUNTY, GEORGIA RECORDS
 2. UNIT NINE LOCKRIDGE FOREST SUBDIVISION PB "T" PG 178 GWINNETT COUNTY, GEORGIA RECORDS
 3. CHAPEL GLEN SUBD. PB 42 PG 236 GWINNETT COUNTY, GEORGIA RECORDS

[Click to view property video](#)

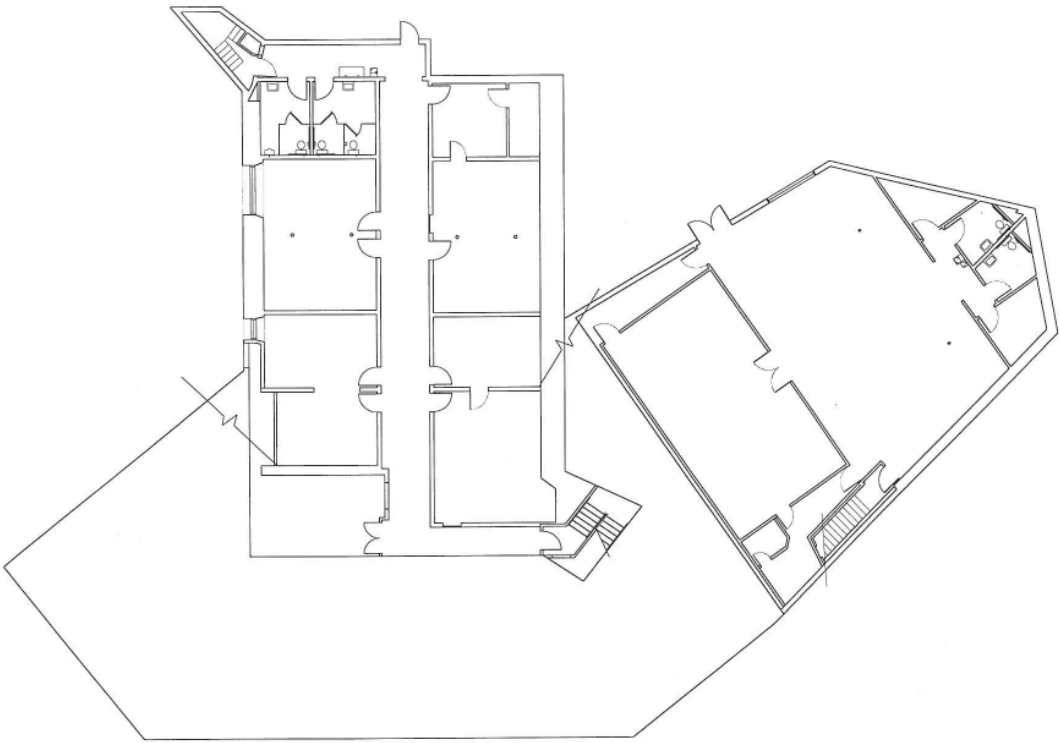
FOR SALE > 5505 WINTERS CHAPEL ROAD > ±26,846 TOTAL SF COMPLEX

Main Floor

Building 1



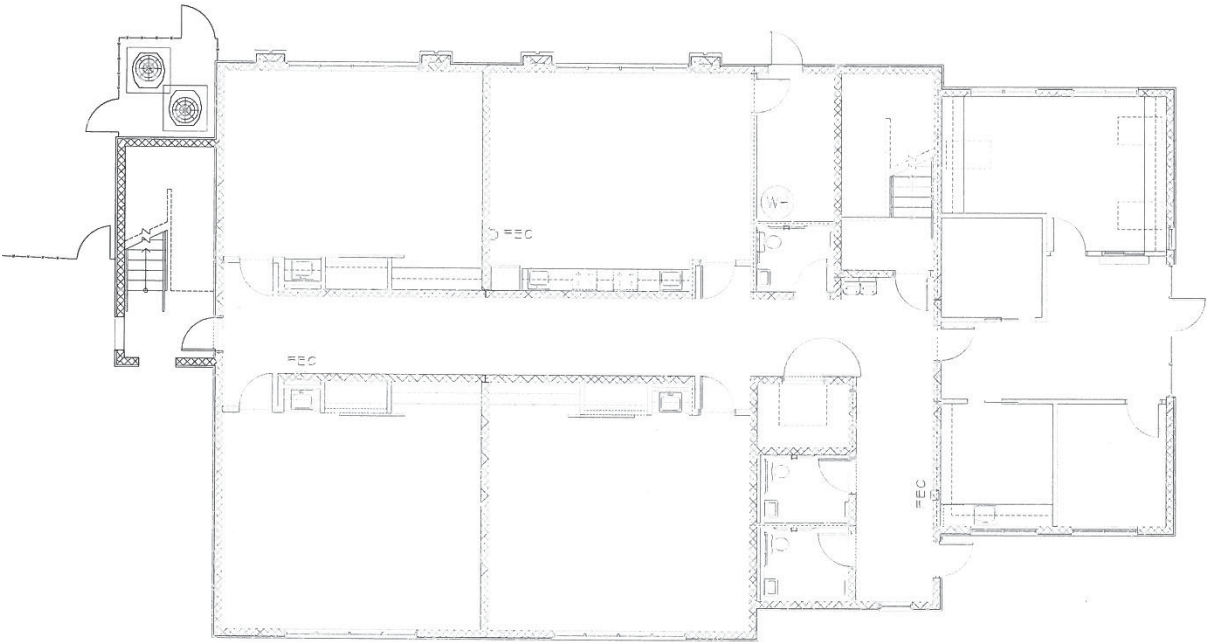
Basement Floor



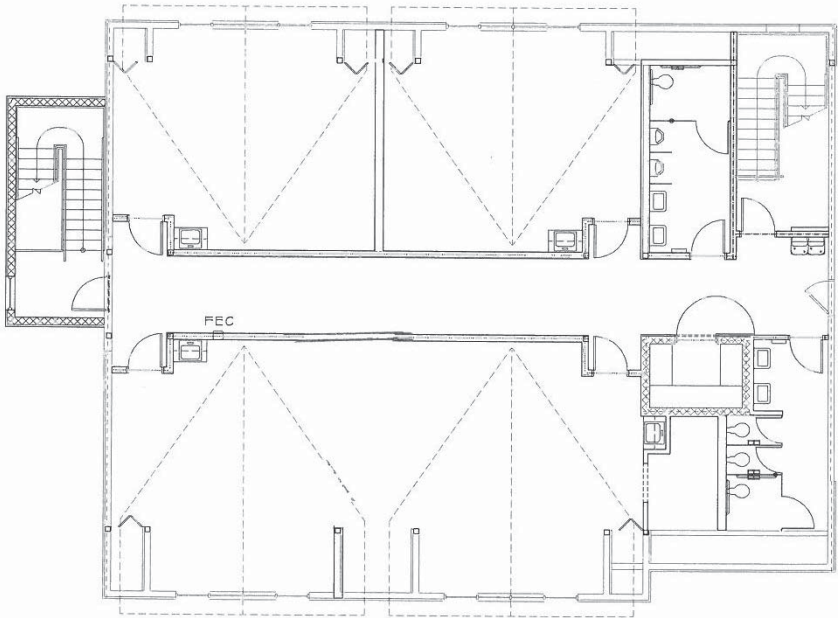
[Click to view property video](#)

First Floor

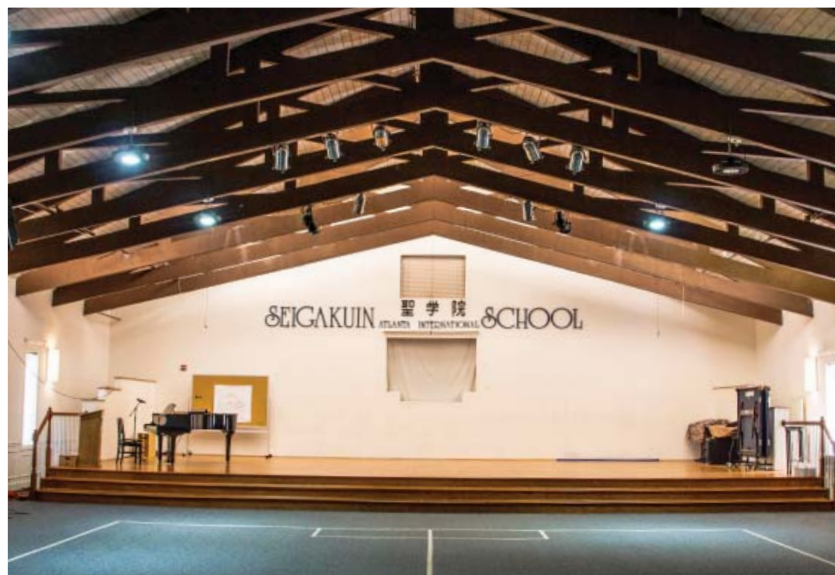
Building 2



Second Floor



FOR SALE > 5505 WINTERS CHAPEL ROAD > ±26,846 TOTAL SF COMPLEX



[Click to view property video](#)

JOSH GREGORY
+ 1 404 877 9210 DIRECT
josh.gregory@colliers.com

KAY HOCUTT
+ 1 404 877 9295 DIRECT
kay.hocutt@colliers.com