

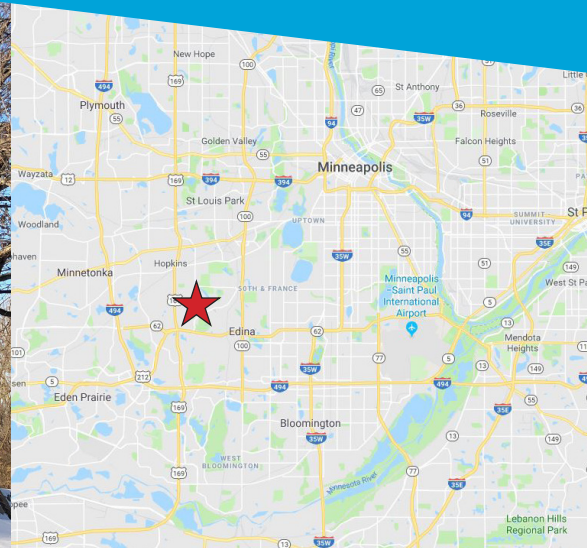
OFFICE/WAREHOUSE SPACE FOR LEASE >

Edina Commons

5600-5666 Lincoln Drive | Edina, MN 55436



Accelerating success.



BUILDING AMENITIES

- > 78,000 square foot office/warehouse facility
- > Loading docks & drive-in doors
- > 18' clear height
- > Fully sprinklered building
- > Ample parking
- > One block off Hwy 169 near Crosstown 62 and Hwy 212
- > Located within walking distance to D'Brian's and Caribou Coffee and within minutes of both the Eden Prairie and Southdale Mall

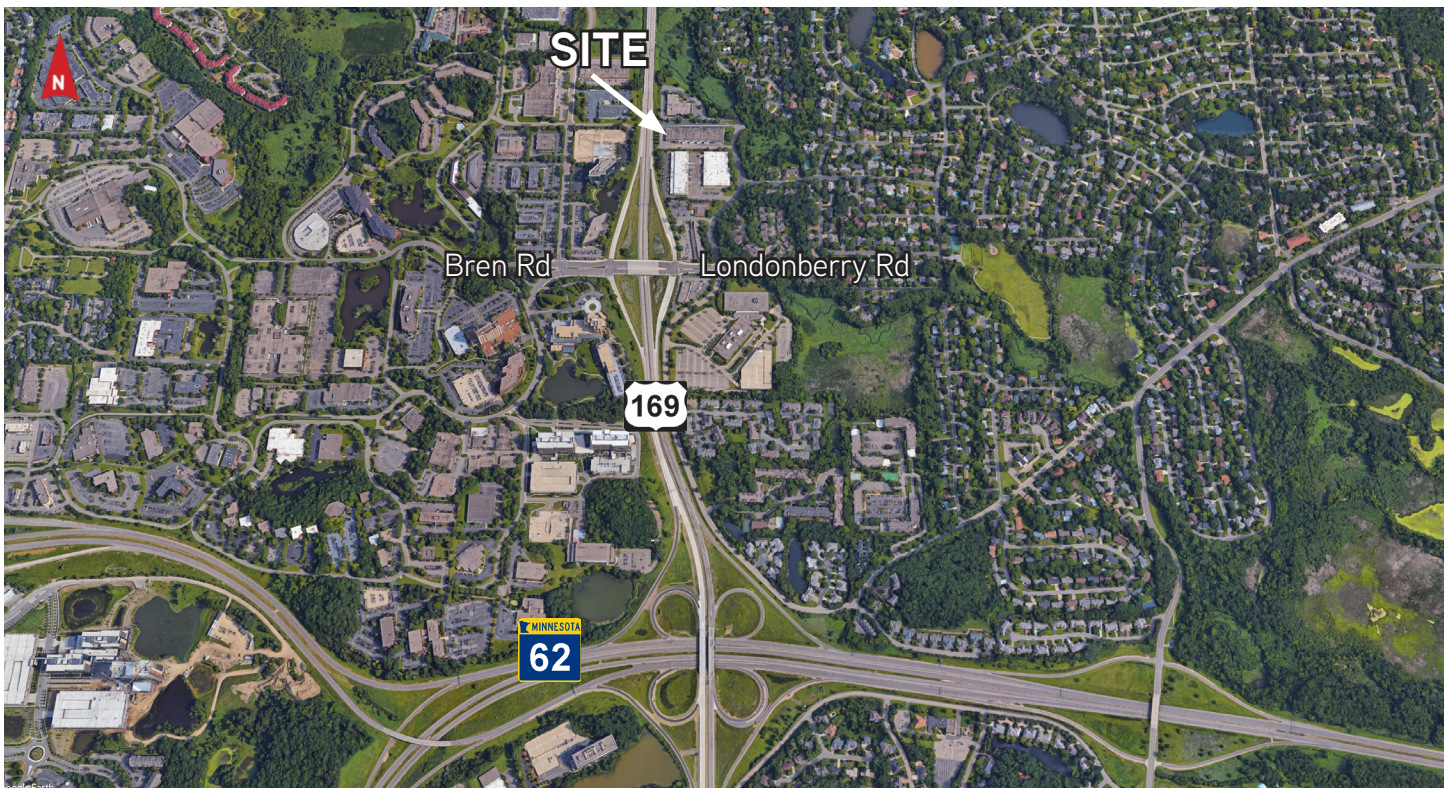
CONTACT US

ROB BRASS
952 897 7757
MINNEAPOLIS, MN
rob.brass@colliers.com

DEVIN DOYLE
952 746 3407
MINNEAPOLIS, MN
devind@wildamere.com

COLLIERS INTERNATIONAL
4350 Baker Road, Suite 400
Minnetonka, MN 55343
www.colliers.com/msp

EDINA COMMON AERIALS



Accelerating success.

Colliers International | Minneapolis-St. Paul | 4350 Baker Road, Suite 400, Minnetonka, MN 55343 | colliers.com/msp

Edina Commons

5600-5666 Lincoln Drive | Edina, MN 55436

PROPERTY ADDRESS:

5600-5666 Lincoln Drive
Edina, MN 55436

NET RENTAL RATE:

\$9.00 per square foot office
\$4.50 per square foot whse

BUILDING SQUARE FEET:

78,000 square feet total

2018 EST. CAM & RE TAX:

\$1.41 psf CAM
\$1.84 psf real estate taxes
\$3.25 psf total

**CURRENTLY AVAILABLE:
SUITE 5600**

9,640 square feet total
3,600 square feet office
6,040 square feet warehouse
• Two (2) docks

AMENITIES:

- Excellent access to Hwys 169 & 62
- Good parking
- Located within walking distance to D'Brian's and Caribou Coffee and within minutes of both the Eden Prairie and Southdale Mall
- End cap unit

YEAR BUILT:

1973

ZONING:

Industrial showroom



FOR LEASING INFORMATION, CONTACT:

Rob Brass

952 897 7757

rob.brass@colliers.com

Devin Doyle

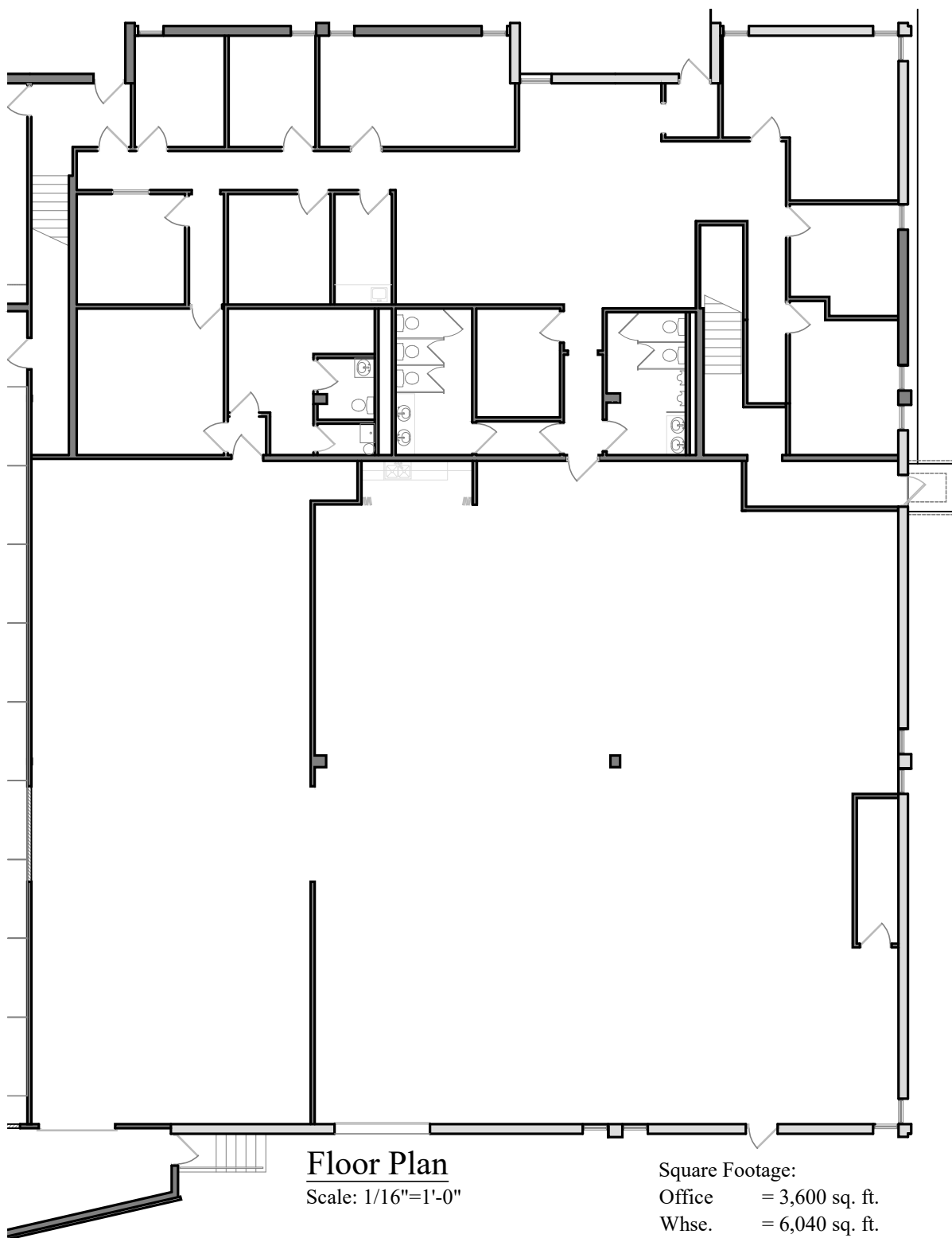
952 746 3407

devind@wildamere.com

Colliers International | Minneapolis-St. Paul
4350 Baker Road, Suite 400, Minnetonka, MN 55343
www.colliers.com



SUBSCRIBE TO OUR BLOG



GENESIS
ARCHITECTURE

4350 Baker Road, Suite 400
Minnetonka, MN 55343
952.897.7874 Fax: 952.897.7740

Vacancy

Lincoln Commons
5600 Lincoln Drive
Edina, MN 55436

WILDAMERE