



9025 NE Von Neumann Drive

(formerly 20325 NW VonNeumann Drive)

FOR LEASE



The 9025 Building is a one-story Class B flex building combining classic and contemporary elements to create a business environment in which tenants enjoy solid quality and technical innovation.

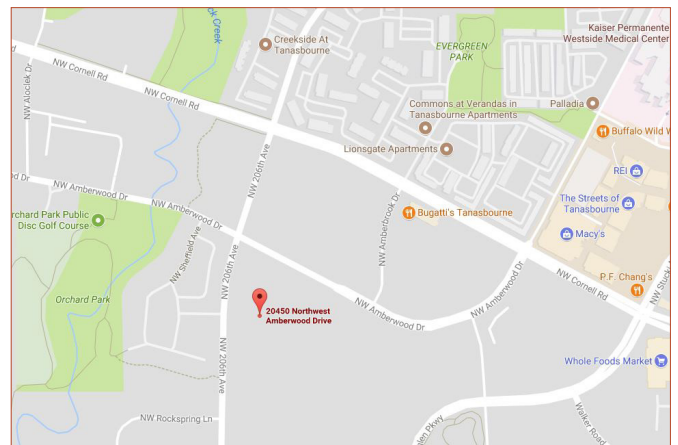
\$14.40/SF NNN

- Park-like setting
- Property manager on site
- Easy access to Highway 26
- 3.6:1,000 parking

AVAILABILITIES

SUITES 100 & 120 - 41,448 SF*

* CONTIGUOUS & DIVISIBLE



JOHN MEDAK
503 542 5898
john.medak@colliers.com

JENNIFER MEDAK
503 542 5899
jennifer.medak@colliers.com

MIKE THOMAS
503 499 0059
mike.thomas@colliers.com

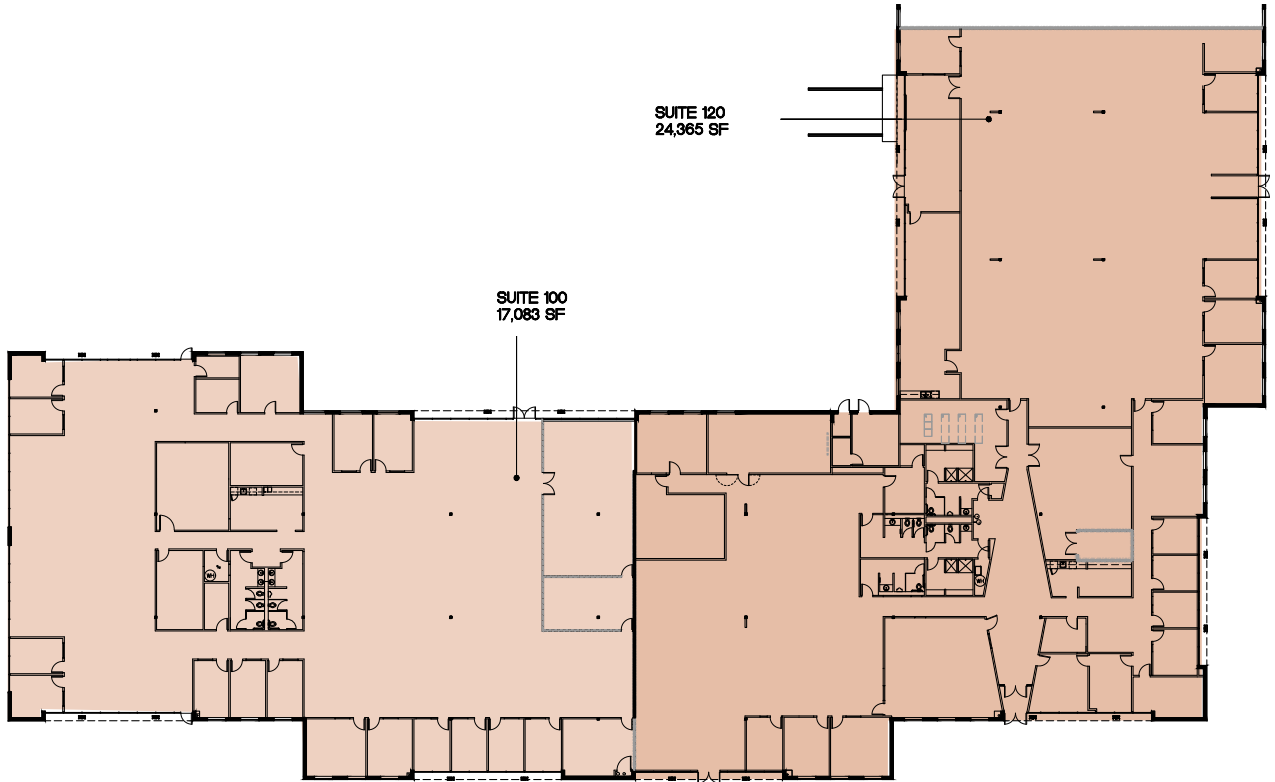




9025 NE Von Neumann Drive

(formerly 20325 NW VonNeumann Drive)

FOR LEASE



JOHN MEDAK
503 542 5898
john.medak@colliers.com

JENNIFER MEDAK
503 542 5899
jennifer.medak@colliers.com

MIKE THOMAS
503 499 0059
mike.thomas@colliers.com

